

Supplementary Information

The Structure of the Flavoprotein Tryptophan-2-Monooxygenase, a Key Enzyme in the Formation of Galls in Plants

Helena M. Gaweska, Alexander B. Taylor, P. John Hart, Paul F. Fitzpatrick

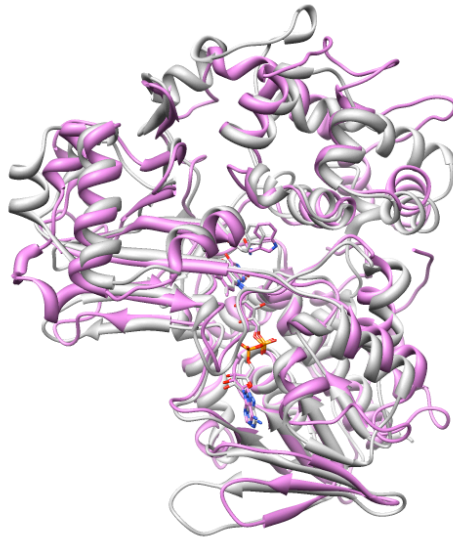


Figure S1. Overlay of the structures of TMO (pink,) and *C. rhodostoma* LAAO (gray, PDB file 2IID).

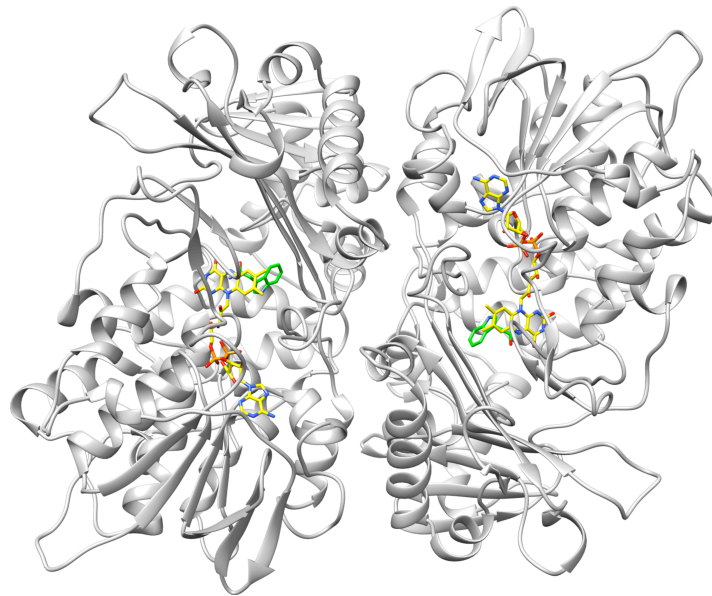


Figure S2. Structure of the TMO dimer.

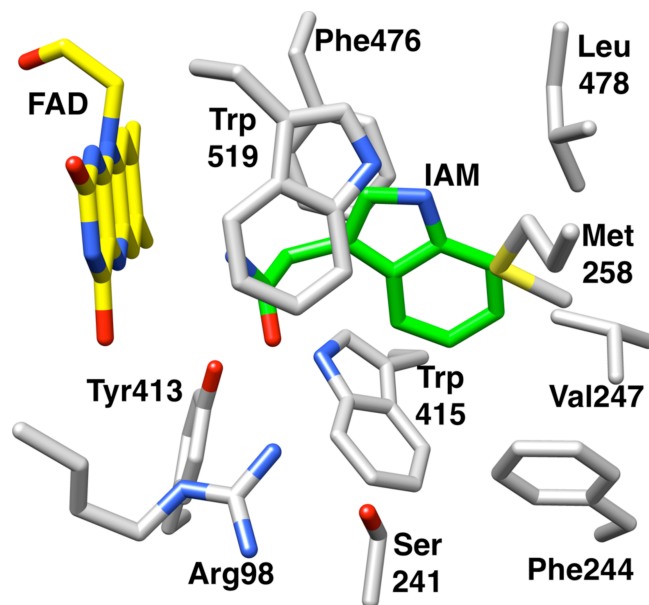


Figure S3. Active sites residues in TMO.

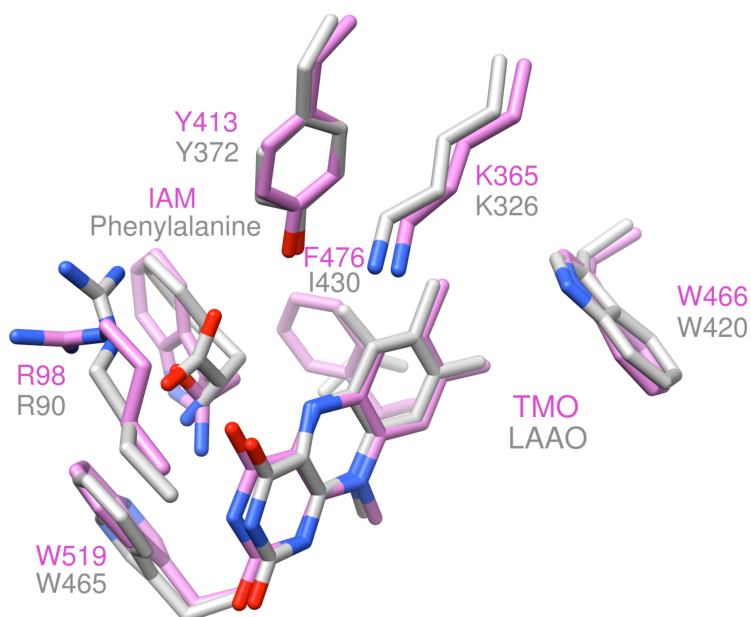


Figure S4. Overlay of the active sites of TMO (pink) and *C. rhodostoma* LAAO with phenylalanine bound (gray, PDB file 2IID).

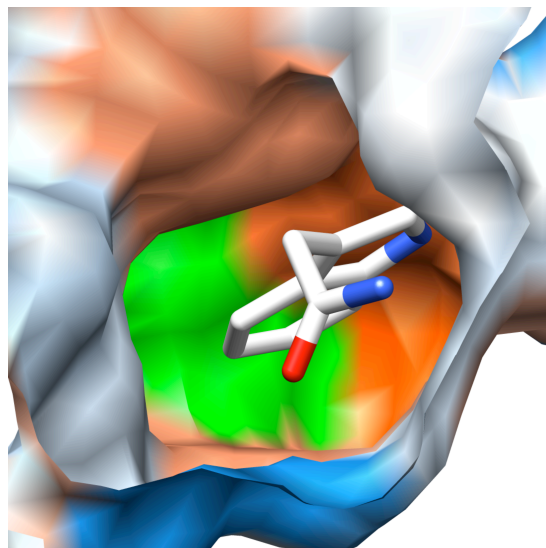


Figure S5. The surface of the substrate binding pocket in TMO. The view is from the FAD into the pocket. Val247 is in green