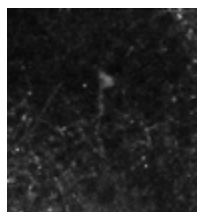
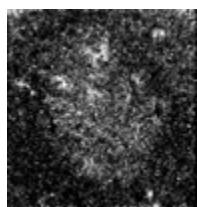


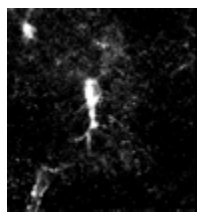
Shigetomi et al., <http://www.jgp.org/cgi/content/full/jgp.201210949/DC1>



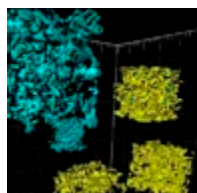
Video 1. Movie of an astrocyte loaded with Fluo-4AM and imaged for 5 min. This cell is analyzed and shown in Fig. 3 A of the Results.



Video 2. Movie of an astrocyte expressing Lck-GCaMP3 and imaged for 5 min. This cell is analyzed and shown in Fig. 3 A of the Results.



Video 3. Movie of an astrocyte expressing cyto-GCaMP3 and imaged for 5 min. This cell is analyzed and shown in Fig. 3 A of the Results.



Video 4. Movie of a Golgi-impregnated astrocyte imaged by serial block-face SEM. The volume dimensions are $90 \times 90 \times 87 \mu\text{m}$. The yellow and cyan regions correspond to perisomatic and peripheral subvolumes of astrocytic branchlets that have been surface rendered. Perisomatic and peripheral subvolumes all exhibit dense ramifications of fine branchlets.