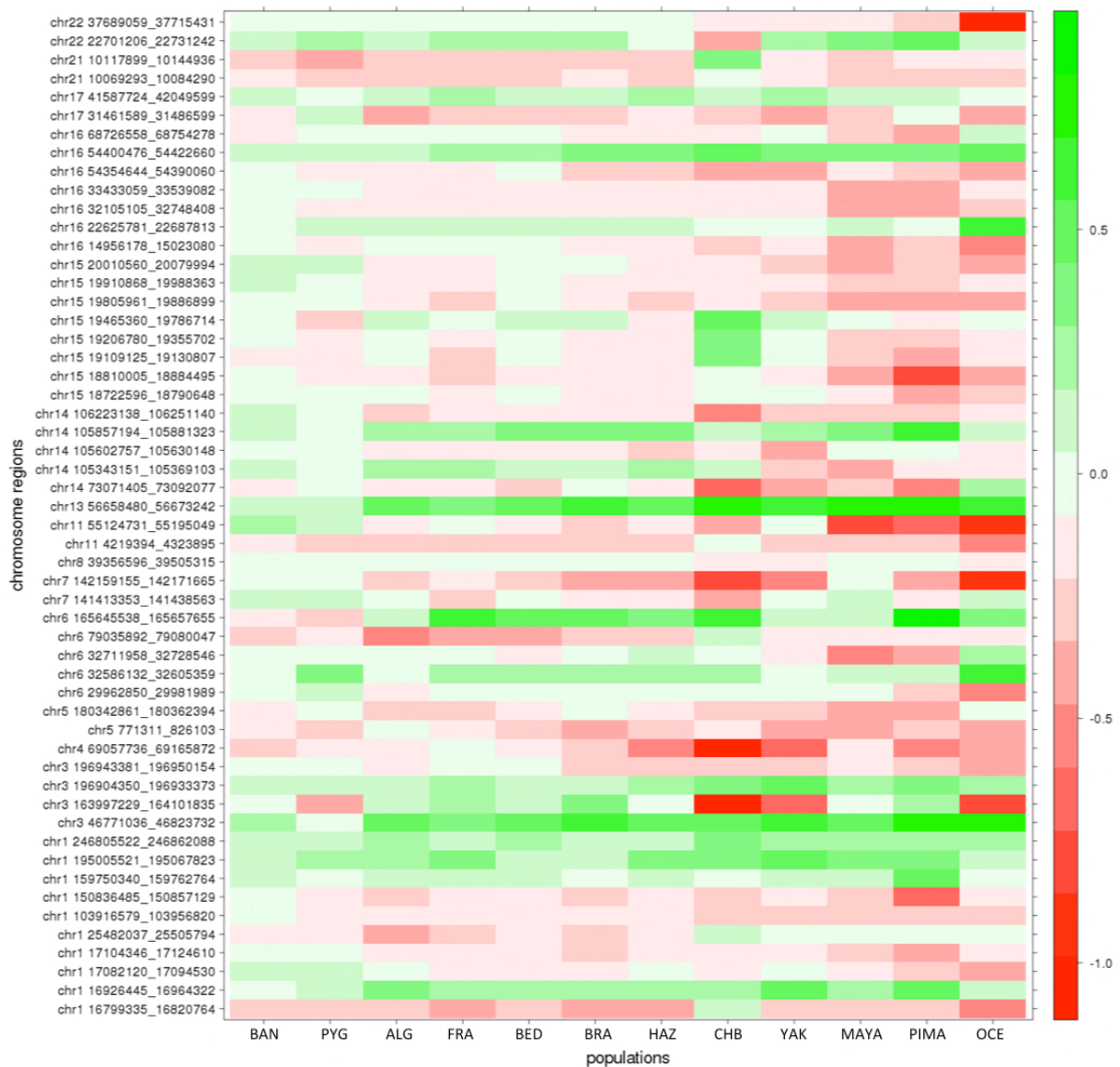
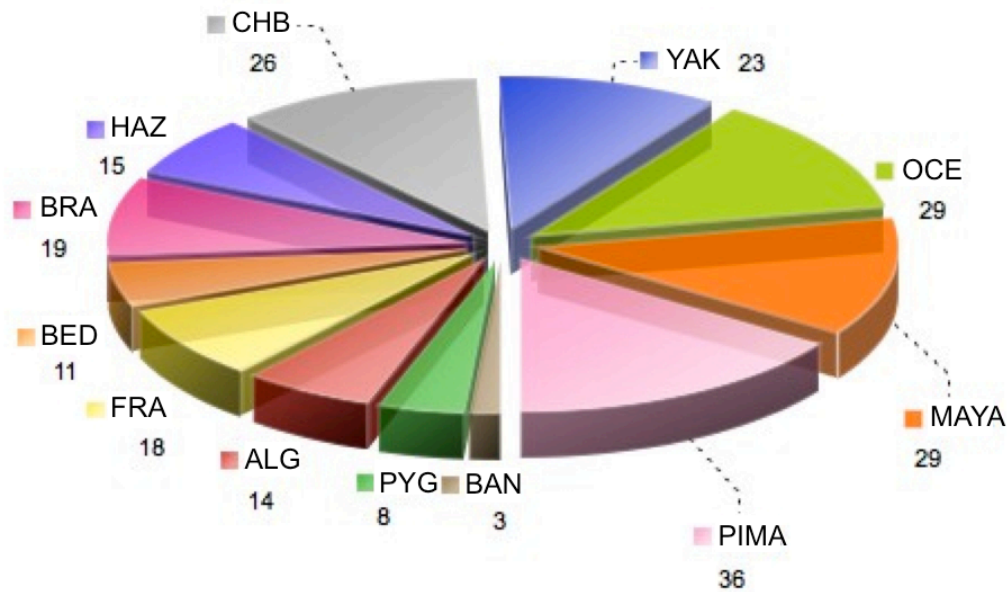


## SUPPLEMENTARY FIGURES



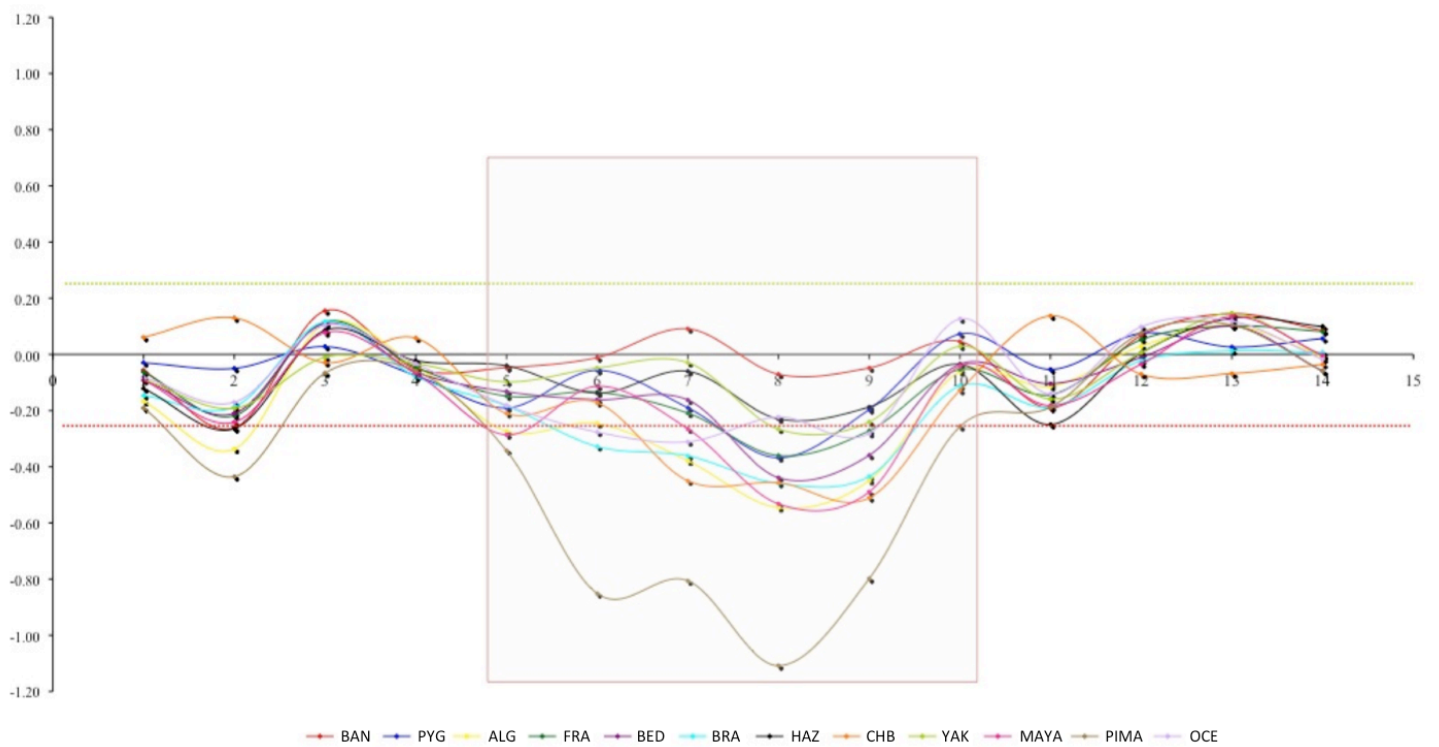
**Supplementary Figure 1. Representation of the population specific CNVs according to the  $\log_2$  ratio intensity values (aCGH)**

Representation of the 54 regions found by aCGH analysis whose signal intensities (i.e. copy number) showed a distinct distribution in at least one of the 12 populations when compared to the Yoruba population. There is a gradual increase in signal intensity in function of the distance from the sub-Saharan Africa Y-axis: CNV coordinates in hg18; x-axis: populations by ID name.



**Supplementary Figure 2. Distribution of the number of CNVs found in each population in comparison to the Yoruba population.**

Populations from America, Oceania and Eastern-Asia have more regions with copy-number differences with respect to Sub-Saharan Africans, Europeans, Northern African and Middle East populations.



**Supplementary Figure 3. The aCGH  $\log_2$  ratio values for *LCE3C\_LCE3B-del*.**

The  $\log_2$  ratios of the aCGH probes falling within the deletion are mostly negative when compared with the YRI population used as a reference. Y-axis:  $\log_2$  ratio values; x-axis: populations analyzed in comparison to YRI. Square: 6 probes falling within the deletion.