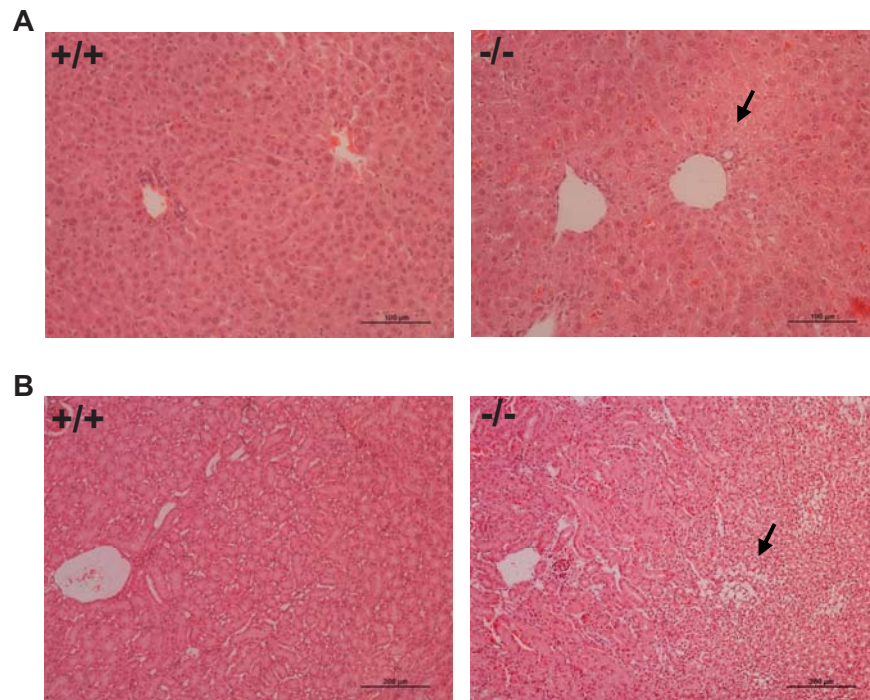


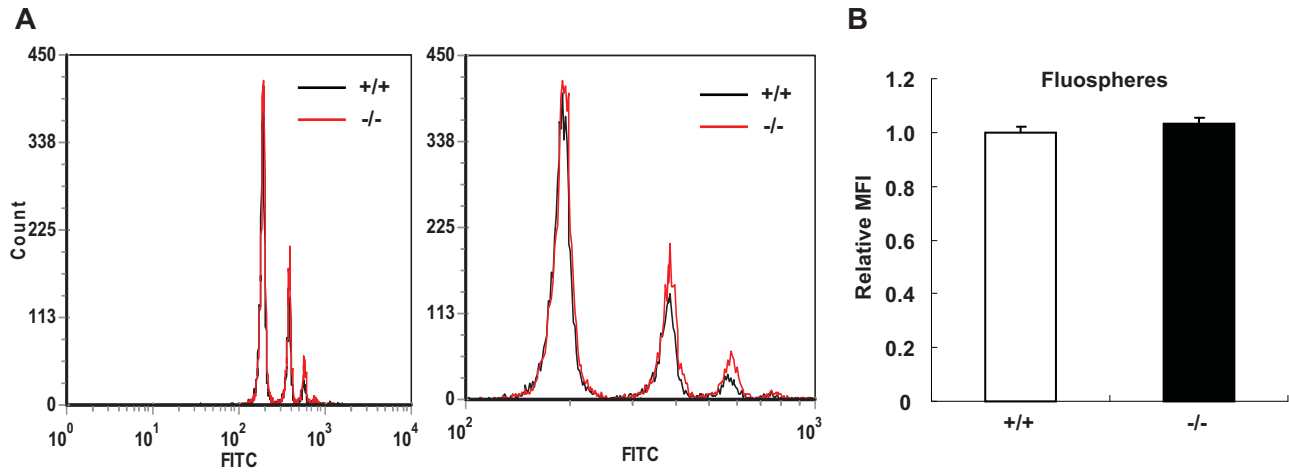
Supplementary Table I Primers for real-time PCR

Target	Forward primer	Reverse primer
Lipocalin-2	CAGAAGGCAGCTTTACGATG	CCTGTGCATATTTCCCAGAG
SR-A	CCCTCCCTTCAGGAGAAGTT	GGACCTTGAGATGTGTCAGTTG
CR3	AGCATATTGGCTTGGTGGTG	CCCAATGAGGATCAAGTTGG
Catalase	CCAGATGAAGCAGTGGAAGG	CCCGCGGTCATGATATTAAGT
SOD1	AAGCATGGCGATGAAAGC	CCATACTGATGGACGTGGAA
GPX	ATCCGGGACTACACCGAGA	ACCAGGTCGGACGTACTTGA
Bcl-2	AGTACCTGAACCGGCATCTG	CAGGTATGCACCCAGAGTGA
TBP ¹	GCACAGGAGCCAAGAGTGAA	TCACAGCTCCCCACCATGTT

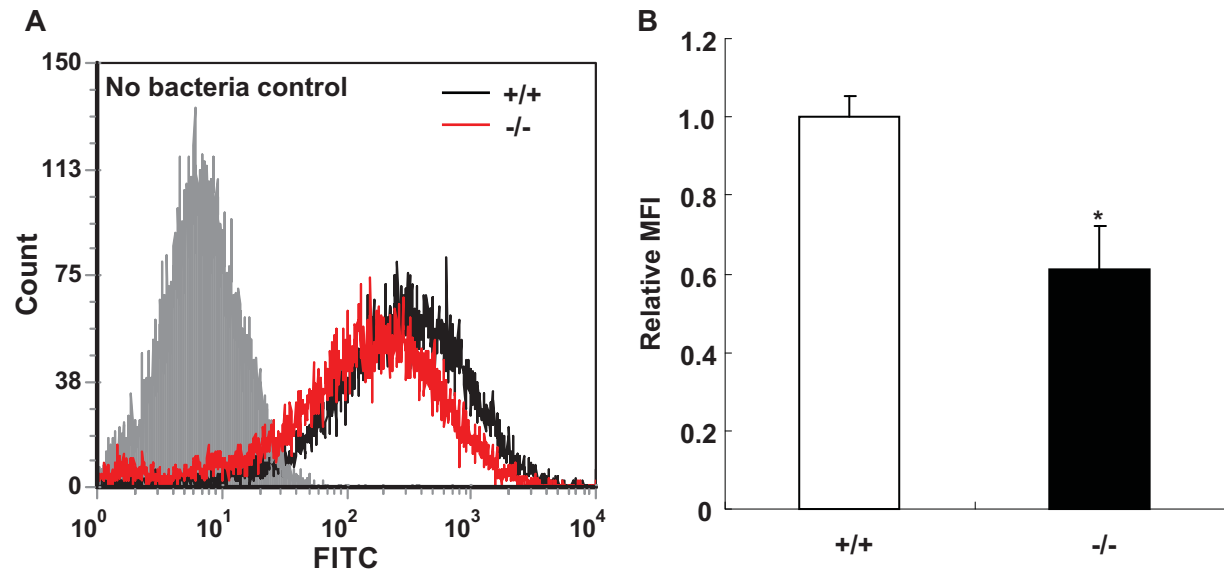
¹TBP, TATA box binding protein.



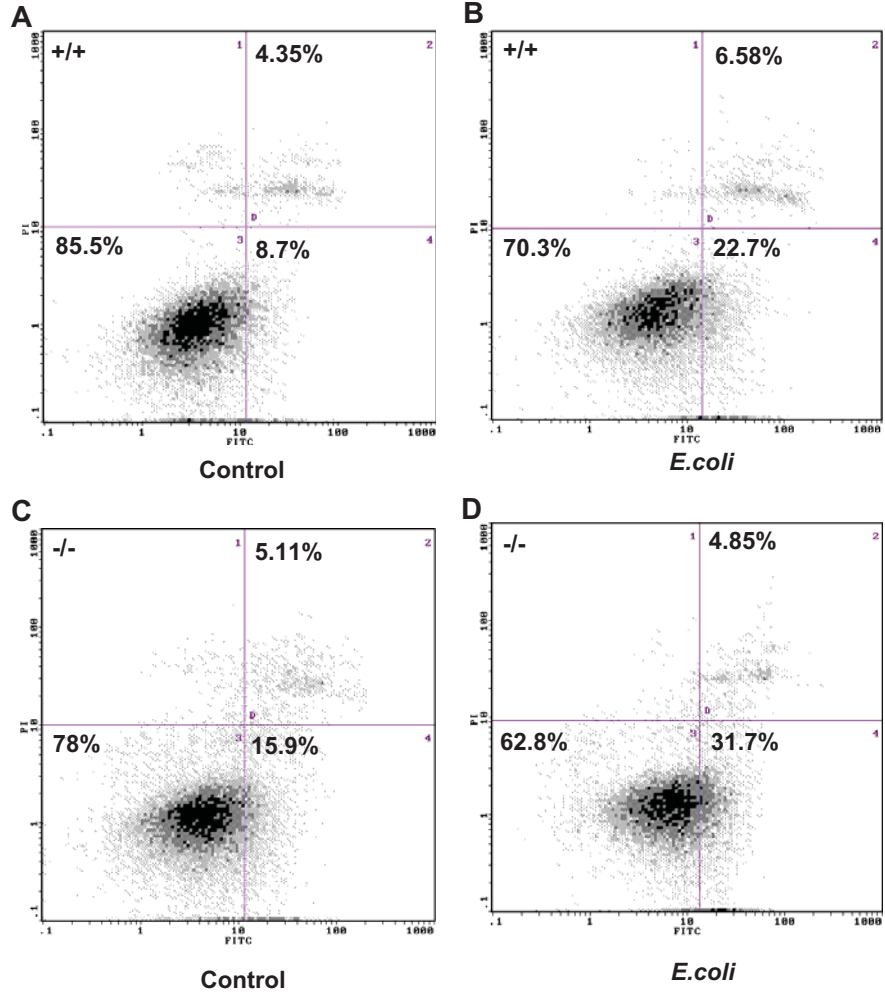
Supplementary Figure 1. The liver and kidney of SRC-3^{-/-} mice have more necrotic areas at 20 h after *E. coli* infection. The liver (A) and kidney (B) from both types of mice at 20 h after infection were fixed, sectioned, and stained with H&E (Magnification x 200 for liver and Magnification x 100 for kidney). Arrow denotes necrotic areas, scale bars: 100 μ m (liver) or 200 μ m (kidney).



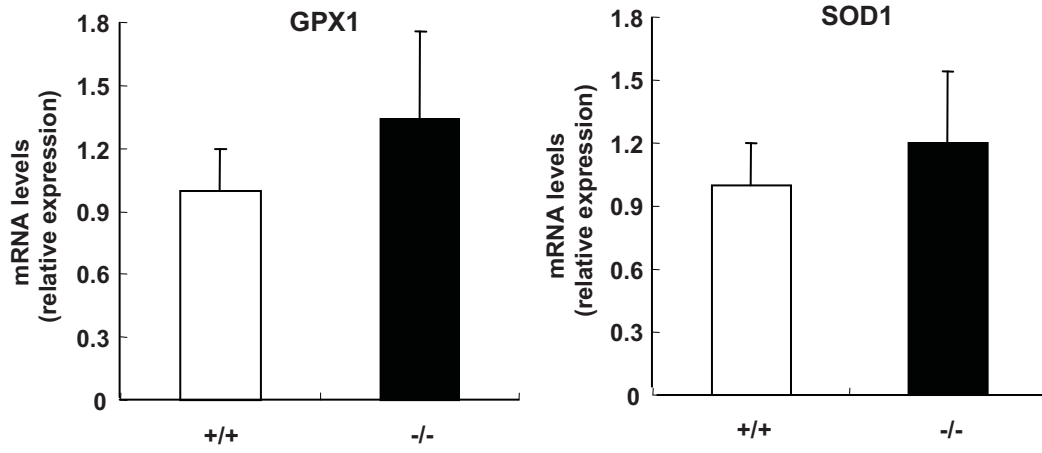
Supplementary Figure 2. Phagocytosis of fluospheres by both SRC-3^{-/-} and wild-type macrophages is comparable. (A) FACS histogram, left panel is original figure and right panel is enlarged figure. (B) Relative mean fluorescence intensity.



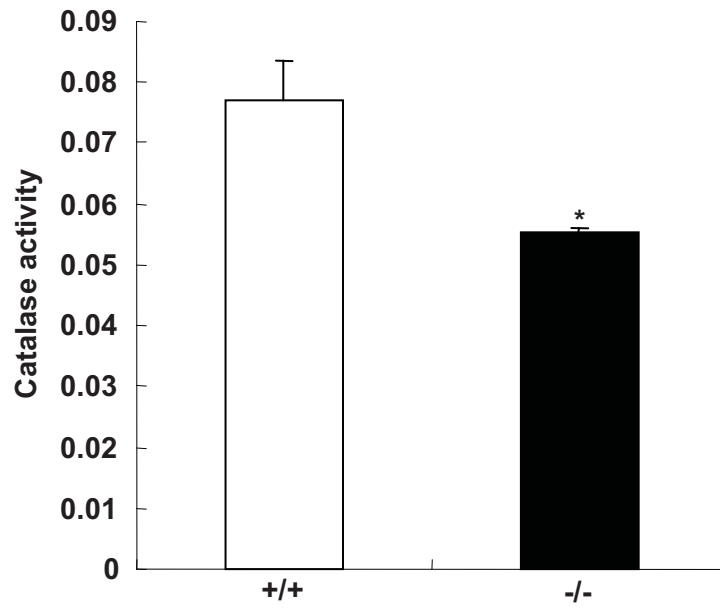
Supplementary Figure 3. Phagocytosis of *S. aureus* by peritoneal macrophages is decreased in SRC-3^{-/-} mice. (A) FACS histogram and (B) Relative mean fluorescence intensity. * $p < 0.05$.



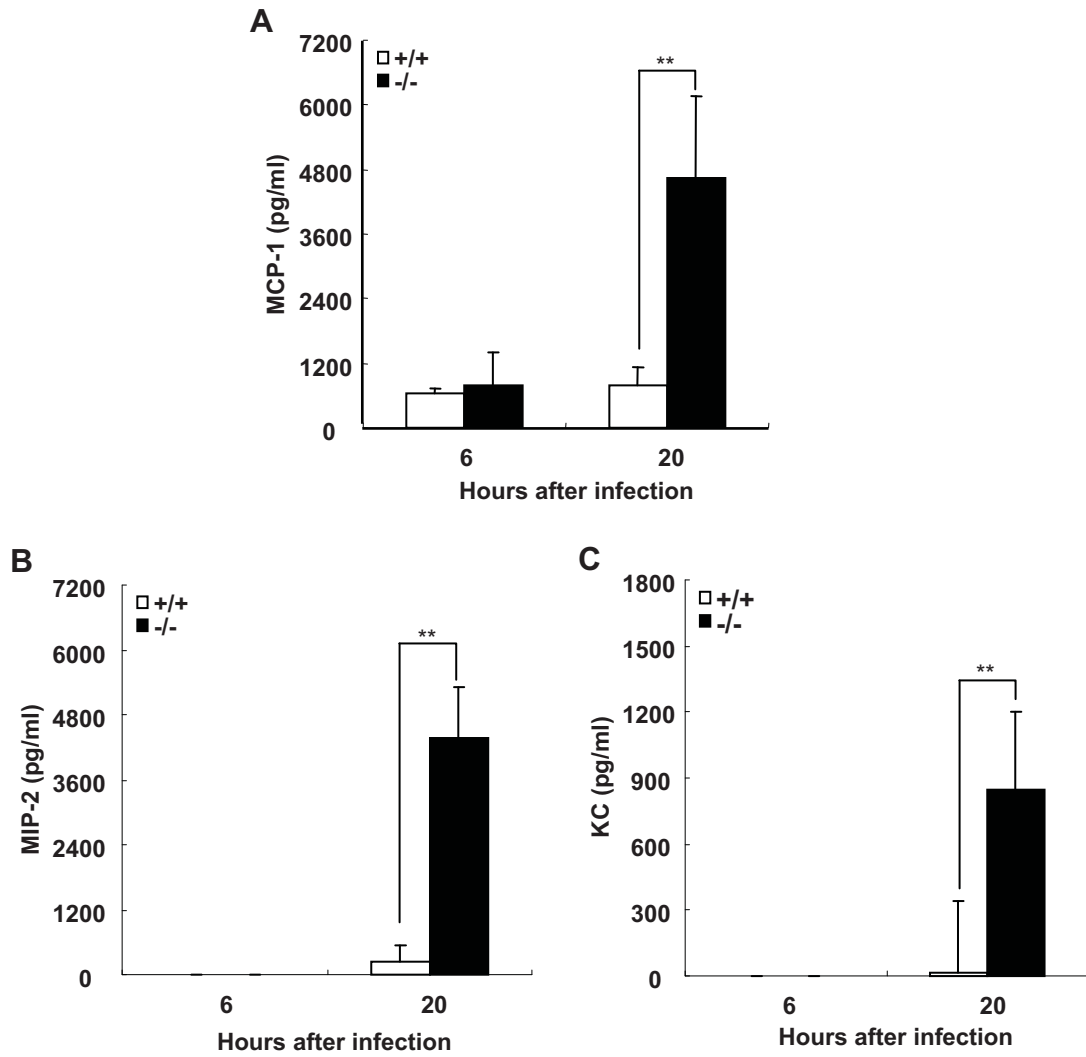
Supplementary Figure 4. Macrophages from SRC-3^{-/-} mice had more apoptotic cells in the absence and presence of *E.coli* by Annexin V staining. (A) and (B) Macrophages from wild-type mice, (C) and (D) Macrophages from SRC-3^{-/-} mice.



Supplementary Figure 5. The expression of GPX1 and SOD1 was determined by real-time PCR. Data are the means + SD of four mice per group.



Supplementary Figure 6. The catalase activity of peritoneal macrophages. Data are the means + SD of three mice per group. * $p < 0.05$.



Supplementary Figure 7. The level of chemokines in the peritoneal fluid from SRC-3^{-/-} and wild-type mice after *E. coli* infection. (A) MCP-1, (B) MIP-2, (C) KC. Data are the means + SD of five mice per group. ** $p < 0.01$.