



Impact of Male Pattern Baldness on Coronary Heart Disease: A meta-analysis

Journal:	<i>BMJ Open</i>
Manuscript ID:	bmjopen-2012-002537
Article Type:	Research
Date Submitted by the Author:	28-Dec-2012
Complete List of Authors:	Yamada, Tomohide; University of Tokyo, Department of Diabetes and Metabolic Diseases Hara, Kazuo; University of Tokyo, Department of Diabetes and Metabolic Diseases Kadowaki, Takashi; University of Tokyo, Department of Diabetes and Metabolic Diseases
Primary Subject Heading:	Dermatology
Secondary Subject Heading:	Cardiovascular medicine, Diabetes and endocrinology, Diagnostics, Epidemiology, Health economics
Keywords:	Coronary heart disease < CARDIOLOGY, Ischaemic heart disease < CARDIOLOGY, Adult dermatology < DERMATOLOGY, Dermatological epidemiology < DERMATOLOGY, EPIDEMIOLOGY

SCHOLARONE™
Manuscripts

1
2
3
4
5
6 **Impact of Male Pattern Baldness on Coronary Heart Disease: A meta-analysis**
7

8 Tomohide Yamada, MD

9
10
11 Kazuo Hara, MD, PhD*

12
13
14 Takashi Kadowaki, MD, PhD

15
16
17 Department of Diabetes and Metabolic Diseases, Graduate School of Medicine

18
19
20 University of Tokyo, Japan

21
22
23 * Corresponding author

24
25
26 7-3-1 Hongo, Bunkyo, Tokyo 113-8655, Japan

27
28
29 Tel.: +81-3-5800-8818; Fax: +81-3-5689-7209

30
31
32 E-mail address: haratky@gmail.com

33
34
35
36
37
38 **Brief title:** Male pattern baldness and CHD

39
40
41
42
43
44 **Word count:** 3,224 words (Abstract: 276+Body of the text: 2,948)

1
2
3
4
5
6 **Abstract**

7
8 **Objective:**

9
10
11 To confirm the association of male pattern baldness with coronary heart disease (CHD).

12
13
14 **Design:**

15
16
17
18
19
20
21
22
23
24
25
26
27
28
29
30
31
32
33
34
35
36
37
38
39
40
41
42
43
44
45
46
47
48
49
50
51
52
53
54
55
56
57
58
59
60
Meta-analysis of observational studies.

Data sources:

Medline and the Cochrane Library were searched for articles published up to November 2012 using keywords that included both baldness and coronary heart disease, and references of the identified studies were also searched.

Study selection:

Observational studies were identified that reported risk estimates for CHD related to baldness. Two observers independently assessed eligibility, extracted data, and assessed the possibility of bias.

Data synthesis:

The adjusted relative risk (RR) and 95% confidence interval (95%CI) were calculated with the DerSimonian-Laird random-effect model.

Results:

From 850 possible studies, 3 cohort studies and 3 case-control studies were selected (36,990 subjects).

1
2
3
4
5
6 In the cohort studies, the adjusted RR of men with severe baldness for CHD was 1.32 (95%CI:
7
8
9 1.08-1.63, P=0.008, I squared=25%) versus those without baldness. Analysis of younger men (<55
10
11
12 or ≤60 years) showed a similar association of CHD with severe baldness (RR: 1.44, 95%CI:
13
14
15 1.11-1.86, P=0.006, I squared=0%).
16

17
18 In 3 studies employing the modified Hamilton scale, vertex baldness was associated with CHD and
19
20
21 the relation depended on the severity of baldness (severe vertex: RR 1.48 (1.04-2.11, P=0.03);
22
23
24 moderate vertex: RR 1.36 (1.16-1.58, P<0.001); mild vertex: RR 1.18 (1.04-1.35, P<0.001).
25
26
27 However, frontal baldness was not associated with CHD (RR 1.11 (0.92-1.32, P=0.28)).
28

29 **Conclusion:**

30
31
32 Vertex baldness, but not frontal baldness, is associated with an increased risk of CHD. The
33
34
35 association with CHD depends on the severity of vertex baldness and also exists among younger
36
37
38 men. Thus, vertex baldness may be more closely related to atherosclerosis than frontal baldness, but
39
40
41 the relation between male pattern baldness and CHD deserves further investigation.
42
43
44
45

46 **Key words:** male pattern baldness, androgenetic alopecia, coronary heart disease, relative risk,
47
48
49 meta-analysis
50
51
52
53
54
55
56
57
58
59
60

1
2
3
4
5
6 **Article summary**
7

8
9 **Article focus:**

10
11
12 • The present meta-analysis aimed to confirm the association of male pattern baldness (androgenetic
13 alopecia) with an increased risk of coronary heart disease (CHD).
14

15
16
17 **Key messages:**

18
19
20 • Meta-analysis of 6 observational studies with 36,690 subjects showed that vertex baldness is
21 associated with an increased risk of CHD and that the relationship depends on the severity of
22 baldness, while frontal baldness is not.
23
24

25
26 • Thus, vertex baldness may be a marker of CHD and is more closely associated with systemic
27 atherosclerosis than frontal baldness.
28

29
30 • This potential relationship should be investigated by further studies, including well-designed
31 prospective studies.
32
33

34
35
36
37
38
39
40 **Strengths and limitations of this study:**

41
42
43 • This was the first meta-analysis of the relation between baldness and CHD; it showed that the
44 relationship depends on the severity of baldness.
45
46

47
48 • The cohort studies had a long follow-up period of 11.0-14.0 years.
49

50
51 • A weakness may be the small number of studies analyzed.
52
53
54
55
56
57
58
59
60

Introduction

Coronary heart disease (CHD) is a major cause of death and disability worldwide (1). Advanced obstructive CHD can exist in patients with minimal or no symptoms and can progress rapidly (2), so early detection is extremely important. Many clinicians carry out screening for asymptomatic CHD and participants in wellness programs often also request such screening, but the usefulness of CHD screening is yet to be confirmed. It was reported that the incidence of CHD was not significantly reduced in asymptomatic diabetic patients when screening was conducted by myocardial scintigraphy (3), and it was also reported that coronary CT screening of asymptomatic patients without a history of coronary artery disease fails to prevent major cardiovascular events (4).

Male pattern baldness, also called androgenetic alopecia (AGA), is the most common cause of hair loss. It affects approximately 30 to 40% of adult men (5) and it is seen in 80% of men by the age of 80 years (6). AGA is considered to be a heritable, androgen-dependent condition that is characterized by varying degrees of thinning/hair loss primarily at the vertex and the frontal areas (temples) of the scalp. In men with AGA, the thin residual hairs tend to be of various lengths and diameters since each follicle is in a different phase of the hair cycle, so the presence of variations in hair length and texture is a classic feature of thin condition (7).

Several recent studies have shown that baldness is associated with the risk of coronary heart disease (CHD)(8-13). These studies have generally found a positive relation between baldness and CHD,

1
2
3
4
5
6 although the strength of the association has varied.
7

8
9 Clarifying the relationship between baldness and CHD could lead to more effective approaches to
10
11 the early detection of heart disease, since it might permit the reliable identification of persons with
12
13 an increased risk of suffering from a cardiac event and allow the delivery of appropriate therapy (e.g.,
14
15 antihypertensive or lipid-lowering therapy) to improve the prognosis of such high-risk persons.
16
17 Accordingly, we performed a meta-analysis to further assess the influence of male pattern baldness
18
19 (AGA) on CHD.
20
21
22
23
24
25
26
27
28

29 **Methods**

30 *Search strategy*

31
32 The Medline and Cochrane Library electronic databases were searched from 1950 until November
33
34 27, 2012 using the medical subject headings “Baldness” (“baldness” or “hair loss” or “alopecia”)
35
36 and “Coronary heart disease” (“coronary heart disease” or “cardiovascular disease” or “coronary
37
38 artery disease”) to identify observational studies that tested the association between baldness and
39
40
41
42
43
44
45
46
47
48
49
50
51
52
53
54
55
56
57
58
59
60
61
62
63
64
65
66
67
68
69
70
71
72
73
74
75
76
77
78
79
80
81
82
83
84
85
86
87
88
89
90
91
92
93
94
95
96
97
98
99
100
101
102
103
104
105
106
107
108
109
110
111
112
113
114
115
116
117
118
119
120
121
122
123
124
125
126
127
128
129
130
131
132
133
134
135
136
137
138
139
140
141
142
143
144
145
146
147
148
149
150
151
152
153
154
155
156
157
158
159
160
161
162
163
164
165
166
167
168
169
170
171
172
173
174
175
176
177
178
179
180
181
182
183
184
185
186
187
188
189
190
191
192
193
194
195
196
197
198
199
200
201
202
203
204
205
206
207
208
209
210
211
212
213
214
215
216
217
218
219
220
221
222
223
224
225
226
227
228
229
230
231
232
233
234
235
236
237
238
239
240
241
242
243
244
245
246
247
248
249
250
251
252
253
254
255
256
257
258
259
260
261
262
263
264
265
266
267
268
269
270
271
272
273
274
275
276
277
278
279
280
281
282
283
284
285
286
287
288
289
290
291
292
293
294
295
296
297
298
299
300
301
302
303
304
305
306
307
308
309
310
311
312
313
314
315
316
317
318
319
320
321
322
323
324
325
326
327
328
329
330
331
332
333
334
335
336
337
338
339
340
341
342
343
344
345
346
347
348
349
350
351
352
353
354
355
356
357
358
359
360
361
362
363
364
365
366
367
368
369
370
371
372
373
374
375
376
377
378
379
380
381
382
383
384
385
386
387
388
389
390
391
392
393
394
395
396
397
398
399
400
401
402
403
404
405
406
407
408
409
410
411
412
413
414
415
416
417
418
419
420
421
422
423
424
425
426
427
428
429
430
431
432
433
434
435
436
437
438
439
440
441
442
443
444
445
446
447
448
449
450
451
452
453
454
455
456
457
458
459
460
461
462
463
464
465
466
467
468
469
470
471
472
473
474
475
476
477
478
479
480
481
482
483
484
485
486
487
488
489
490
491
492
493
494
495
496
497
498
499
500
501
502
503
504
505
506
507
508
509
510
511
512
513
514
515
516
517
518
519
520
521
522
523
524
525
526
527
528
529
530
531
532
533
534
535
536
537
538
539
540
541
542
543
544
545
546
547
548
549
550
551
552
553
554
555
556
557
558
559
560
561
562
563
564
565
566
567
568
569
570
571
572
573
574
575
576
577
578
579
580
581
582
583
584
585
586
587
588
589
590
591
592
593
594
595
596
597
598
599
600
601
602
603
604
605
606
607
608
609
610
611
612
613
614
615
616
617
618
619
620
621
622
623
624
625
626
627
628
629
630
631
632
633
634
635
636
637
638
639
640
641
642
643
644
645
646
647
648
649
650
651
652
653
654
655
656
657
658
659
660
661
662
663
664
665
666
667
668
669
670
671
672
673
674
675
676
677
678
679
680
681
682
683
684
685
686
687
688
689
690
691
692
693
694
695
696
697
698
699
700
701
702
703
704
705
706
707
708
709
710
711
712
713
714
715
716
717
718
719
720
721
722
723
724
725
726
727
728
729
730
731
732
733
734
735
736
737
738
739
740
741
742
743
744
745
746
747
748
749
750
751
752
753
754
755
756
757
758
759
760
761
762
763
764
765
766
767
768
769
770
771
772
773
774
775
776
777
778
779
780
781
782
783
784
785
786
787
788
789
790
791
792
793
794
795
796
797
798
799
800
801
802
803
804
805
806
807
808
809
810
811
812
813
814
815
816
817
818
819
820
821
822
823
824
825
826
827
828
829
830
831
832
833
834
835
836
837
838
839
840
841
842
843
844
845
846
847
848
849
850
851
852
853
854
855
856
857
858
859
860
861
862
863
864
865
866
867
868
869
870
871
872
873
874
875
876
877
878
879
880
881
882
883
884
885
886
887
888
889
890
891
892
893
894
895
896
897
898
899
900
901
902
903
904
905
906
907
908
909
910
911
912
913
914
915
916
917
918
919
920
921
922
923
924
925
926
927
928
929
930
931
932
933
934
935
936
937
938
939
940
941
942
943
944
945
946
947
948
949
950
951
952
953
954
955
956
957
958
959
960
961
962
963
964
965
966
967
968
969
970
971
972
973
974
975
976
977
978
979
980
981
982
983
984
985
986
987
988
989
990
991
992
993
994
995
996
997
998
999
1000

52 *Study selection*

53
54
55 We performed initial screening based on the study titles or abstracts, while the second screening
56
57
58
59
60

1
2
3
4
5
6 involved full-text review. Cohort studies, case-control studies, and cross-sectional studies that
7
8
9 assessed the relation between male pattern baldness and CHD were eligible for inclusion if the
10
11
12 following criteria were met: 1) the full text of the report was published in English, 2) the relative risk
13
14 (risk ratio, hazard ratio, or odds ratio) was reported with adjustment for possible confounders (e.g.
15
16 age, smoking, family history of baldness, or family history of CHD), 3) the presence and severity of
17
18
19 male pattern baldness was reported, and 4) CHD events were reported.
20
21
22
23
24
25

26 *Definitions of baldness and CHD*

27
28
29 Baldness was defined according to the description in the history and/or on the basis of terms such
30
31
32 as AGA and male pattern hair loss. We excluded studies that analyzed men with other types of
33
34
35 baldness (e.g., alopecia areata or scarring alopecia). CHD was defined as including all of the
36
37
38 following: coronary artery disease, myocardial infarction, angina pectoris, cardiomyopathy, and
39
40
41 other types of ischemic heart disease.
42
43
44
45
46

47 *Assessment of validity*

48
49 To ascertain the validity of the eligible studies, the quality of each report was appraised with
50
51
52 reference to the STROBE statement (14). Moreover, the Newcastle-Ottawa Scale for assessing
53
54
55 quality of nonrandomized studies in meta-analyses was used to quantify the validity of each study
56
57
58
59
60

1
2
3
4
5
6 (15).
7
8
9
10

11
12 ***Data extraction***
13

14
15 Two investigators (T.Y. and K.H.) independently reviewed each study to determine its eligibility,
16
17 and then extracted and tabulated all of the relevant data. Disagreement was resolved by consensus
18
19 between the two investigators.
20
21

22
23 The following information was obtained from each study: first author, year of publication, type of
24
25 study, country, number of subjects, CHD events, method of assessing baldness, follow-up period,
26
27 mean age, smoking, covariates used for adjustment during analysis, and severity of baldness.
28
29
30
31
32
33
34

35 ***Statistical analysis***
36

37
38 The pooled relative risk (RR) adjusted for possible confounders and its 95% confidence interval
39
40 (CI) were calculated for the risk of CHD events in each study by the DerSimonian-Laird random
41
42 effect model weighted with inverse variance. Equivalence of RRs between the cohort studies and the
43
44 cross-sectional studies was assessed by the z-statistic test. Cochrane's χ^2 test and the I^2 test were
45
46 used to evaluate heterogeneity among studies and a threshold P value of 0.10 was considered to be
47
48 significant (16). Possible publication bias was evaluated by creating a funnel plot of the effect size
49
50
51
52
53
54
55 for each study versus the standard error (SE). Funnel plot asymmetry was assessed by the Begg and
56
57
58
59
60

1
2
3
4
5
6 Egger tests. All statistical analyses were performed with Stata 12.0 software (StataCorp, College
7
8
9 Station, TX). Results are expressed as the mean with 95%CI, unless otherwise indicated. Except for
10
11
12 tests of heterogeneity, a P value of less than 0.05 was considered significant. All procedures were
13
14
15 performed in accordance with the guideline published by the Meta-analysis Of Observational
16
17
18 Studies in Epidemiology (MOOSE) group (17) and the PRISMA statement (18)(**Supplementary**
19
20 **Data 1**).

21 22 23 24 25 26 **Results**

27 28 29 *Literature search*

30
31
32 **Figure 1** shows a flow chart of the study selection process. We identified a total of 850 reports by
33
34
35 searching the databases. Among these, 834 reports were excluded after review of the title and
36
37
38 abstract, leaving 16 studies for further evaluation. Ten of these 16 studies were excluded after full
39
40
41 text evaluation, chiefly because of the lack of pertinent data. The remaining 6 studies (8-13) fulfilled
42
43
44 the inclusion criteria were used for this meta-analysis.

45 46 47 48 49 *Study characteristics*

50
51
52 The 6 studies that were selected included 3 cohort studies and 3 case-control studies, and their
53
54
55 characteristics are summarized in **Table 1**. There were moderate differences with respect to the
56
57
58
59
60

1
2
3
4
5
6 country of origin, number of subjects, and method of assessing baldness. The studies were published
7
8
9 between 1993 and 2008. Four studies (9-11,13) were conducted in the USA and the other 2 (8,12)
10
11 were performed in the European Union. The size of the study populations ranged from 1,437 to
12
13 19,112 subjects (mean: 6,165 subjects). In 5 of the 6 studies (8,10-13), CHD was defined as
14
15 non-fatal myocardial infarction. The mean follow-up period ranged from 11 to 14 years. The method
16
17 of assessing baldness varied, with a modified or simplified Hamilton scale being employed in 4
18
19 studies (8,10,11,13) and a personal scale being used in the other 2 studies (9,12).
20
21
22
23
24

25
26 Three studies (10,11,13) used a modified Hamilton scale that reduced the 12 categories of the
27
28 original scale to the following five: no baldness (I, II); frontal baldness alone (IIa, III, IIIa, IVa); mild
29
30 vertex baldness (III vertex, IV); moderate vertex baldness (V, Va); and severe vertex baldness (VI,
31
32 VII). One study (8) used a simplified Hamilton scale, in which the extent of baldness was classified
33
34 as follows: none; frontoparietal region (no bald triangle but >3 cm in front of the ear, or bald triangle
35
36 but ≤3 cm in front of the ear); crown-top region (thick hair, partly thin hair, bald spot, or bald top
37
38 and front); and combined.
39
40
41
42
43
44

45
46 Among the two studies that employed personal scales, Ford, classified baldness as none,
47
48 minimum, moderate, or severe (9). Minimum baldness corresponded to no obvious baldness when
49
50 the participant walked into the examining room, while moderate baldness was observable baldness at
51
52 the first encounter and severe baldness was obvious at the first encounter. In the other study, Miric
53
54
55
56
57
58
59
60

1
2
3
4
5
6 classified baldness as none, frontal, parietal (vertex), or combined (12).
7

8
9 The RR for CHD of the subjects with baldness was adjusted for several coronary risk factors (age,
10
11 smoking, diabetes, etc.) in each study, but the number of variables differed significantly among the
12
13 studies.
14
15

16
17 The reports on all 3 cross-sectional studies (11-13) explicitly mentioned the limitations of a
18
19 cross-sectional design (i.e., it cannot assess causality), the possible biases of each study, and the
20
21 influence of confounders. The reports on all 3 cohort studies (8-10) mentioned the possibility of
22
23 misclassification of the severity of baldness.
24
25
26
27

28
29 One study found that baldness was not associated with CHD (13), but the other 5 studies
30
31 concluded that baldness was associated with a significantly increased risk of CHD, although the
32
33 strength of the association varied.
34
35
36

37
38 According to the Newcastle-Ottawa quality assessment scale for observational studies, all of the
39
40 studies used in this meta-analysis achieved at least six out of nine points, indicating that the overall
41
42 quality of the studies was good (**Supplementary Data 2**).
43
44
45

46 47 48 49 *Association of baldness with CHD*

50
51
52 Among the 6 studies with a total of 36,990 subjects that were selected (8-13), no study showed a
53
54
55 significant decrease in the risk of CHD for men with baldness.
56
57
58
59
60

1
2
3
4
5
6 **Figures 2-4** show the results obtained by combining the RRs for CHD with the random-effect
7
8
9 model.

10
11 In the 3 cohort studies (8-10), the adjusted RR of CHD for men of all ages with severe baldness
12
13 versus those without baldness was 1.32 (95%CI: 1.08-1.63; P=0.008; P for heterogeneity=0.26; I
14
15 squared=25%). Analysis restricted to younger subjects (<55 years old or ≤60 years old at baseline)
16
17 revealed a similar association of severe baldness with CHD (RR 1.44 (95%CI: 1.11-1.86; P=0.006; P
18
19 for heterogeneity=0.59; I squared=0%)) (**Figure 2**).

20
21 In the 3 case-control studies (11-13), the adjusted RR was 1.70 (95%CI: 1.05-2.74; P=0.03; P for
22
23 heterogeneity=0.01; I squared=78%) for all subjects, while the RR was 1.84 (95%CI: 1.30-2.62;
24
25 P=0.001; P for heterogeneity=0.17; I squared=44%) among the younger subjects (**Figure 3**). The
26
27 difference of RR values between the cohort and case-control studies was not significant (all subjects:
28
29 P=0.15; patients≤60 years old: P=0.07).

30 31 32 33 34 35 36 37 38 39 40 41 42 43 **Stratified analysis**

44
45
46 All three studies that assessed the severity of baldness by using the modified Hamilton scale
47
48 (10,11,13) showed that vertex baldness was associated with CHD and that this association was
49
50 dependent on the severity of baldness. In subjects with severe vertex baldness, the RR was 1.48
51
52 (95%CI: 1.04-2.11; P=0.03; P for heterogeneity=0.02; I squared=75%), while the RR was 1.36
53
54
55
56
57
58
59
60

1
2
3
4
5
6 (95%CI: 1.16-1.58; P<0.001; P for heterogeneity=0.95; I squared=0%) for moderate vertex baldness
7
8
9 and 1.18 (95%CI: 1.04-1.35; P<0.001; P for heterogeneity=0.35; I squared=4%) for mild vertex
10
11 baldness. In contrast, there was no significant association of frontal baldness with CHD and the RR
12
13 was only 1.11 (95%CI: 0.92-1.32; P=0.28; P for heterogeneity=0.24; I squared=30%) (**Figure 4**).
14
15

16
17 Because the method of assessing baldness was not homogenous, we also performed a sensitivity
18
19 analysis of the studies that used personal scales to classify baldness into 4 grades (none, frontal,
20
21 crown-top, or combined) (8,12). Similar results were obtained showing that the association with
22
23 CHD depended on the severity of baldness, with an RR of 1.69 (95%CI: 1.28-2.23; P<0.001; P for
24
25 heterogeneity=0.97; I squared=0%) for combined baldness, an RR of 1.52 (95%CI: 0.97-2.39;
26
27 P=0.07; P for heterogeneity=0.001; I squared=91%) for crown-top baldness, and an RR of 1.22
28
29 (95%CI: 0.70-2.14; P=0.49; P for heterogeneity=0.05; I squared=73%) for frontal baldness.
30
31
32
33
34
35
36
37
38
39
40

41 ***Publication bias***

42
43 The funnel plot, Begg's test, and Egger's test were used to evaluate the potential influence of
44
45 publication bias on the association between baldness and CHD. The funnel plot did not show an
46
47 asymmetric pattern, while Egger's test and Begg's test revealed no significant publication bias (all
48
49 P≥0.05).
50
51
52
53
54
55
56
57
58
59
60

Discussion

The present meta-analysis of 6 studies from the USA and Europe demonstrated that vertex baldness was associated with an increased risk of CHD among subjects of all ages and also among younger men. Interestingly, frontal baldness was not associated with CHD.

When baldness was classified by the Hamilton-Norwood scale, which is the most commonly used classification of male pattern baldness worldwide (19), the relation of CHD with baldness was shown to be dependent on the severity of baldness.

These findings support the hypothesis that vertex baldness is a local manifestation of factors promoting systemic atherosclerosis, such as metabolic syndrome, hypertension, and smoking.

Minoxidil (Rogaine) is one of the most popular drugs for the treatment of male pattern baldness. Minoxidil was originally developed as an antihypertensive agent (vasodilator) and it is thought to improve the blood flow and the supply of oxygen and nutrients to the hair follicles by dilating vessels in the scalp and opening potassium channels. This may lead to shedding of hairs in the telogen phase, which are then replaced by thicker hairs in the anagen phase (20).

Minoxidil is only indicated for vertex baldness and is ineffective for frontal baldness (21), which supports our finding that vertex baldness is more closely related to atherosclerosis than frontal baldness.

Mechanism of the relation between baldness and CHD

The reason for the association between baldness and CHD is unclear. It has been suggested that classical coronary risk factors (e.g., age, hypertension, dislipidemia, and smoking) might influence both conditions, so that baldness is a marker of atherosclerosis. In fact, previous studies have demonstrated a positive association between male pattern baldness and insulin resistance (22), metabolic syndrome (23), and hypertension (24). It has also been postulated that baldness is linked to CHD by mechanisms such as hyperinsulinemia, chronic inflammation, and increased peripheral sensitivity to androgens, and these are briefly discussed below.

1) Hyperinsulinemia/insulin resistance is the central factor in metabolic syndrome and it promotes intolerance of carbohydrates and the development of central (abdominal) obesity. Insulin resistance has also been shown to cause vasoconstriction and impairs the supply of nutrients to the hair follicles of the scalp, as well as enhancing the influence of dihydro-testosterone (DHT) on follicular miniaturization (25,26).

2) A proinflammatory state could increase the levels of inflammatory cytokines in the arterial walls (27) and hair follicles (28). High-sensitivity C-reactive protein is a marker of inflammation and is also a good predictor of future cardiovascular disease (29), so chronic inflammation could be related to both CHD and baldness.

3) Male pattern baldness may be caused by increased peripheral sensitivity to androgens, since bald

1
2
3
4
5
6 men show an increase of androgen receptors in the scalp (30) and have higher serum levels of both
7
8
9 total and free testosterone (31). Free testosterone is converted to DHT by 5 α -reductase, leading to
10
11
12 miniaturization of hair follicles. It has been reported that 5 α -reductase exists in the blood vessels and
13
14
15 the heart, as does the DHT receptor, which is involved in vascular smooth muscle proliferation that
16
17
18 represents a fundamental feature of arteriosclerosis along with the deposition of lipids (32).
19

20 21 22 23 ***Strengths and Limitations*** 24

25
26 The strengths of this meta-analysis were as follows. First, our analysis included several large cohort
27
28
29 and case-control studies, with a total of 36,990 subjects. Second, the cohort studies had a long
30
31
32 follow-up period (11.0-14.0 years). In all of the studies, analyses were adjusted for various classical
33
34
35 coronary risk factors, such as age, smoking, hypertension, dyslipidemia, and body mass index.
36

37
38 However, this meta-analysis also had several limitations. First, we only reviewed English-language
39
40
41 reports, which could have led to selection bias. Our analyses of publication bias did not suggest that
42
43
44 unpublished results had been missed, but these analyses might have been underpowered due to the
45
46
47 small effect sizes. Second, although most factors showed no significant between-study heterogeneity,
48
49
50 it was significant for some factors, suggesting that differences of epidemiological characteristics
51
52
53 (e.g., the rate of severe baldness or CHD) or different diagnostic criteria (for baldness and/or CHD)
54
55
56 contributed to heterogeneity to some extent.
57
58
59
60

1
2
3
4
5
6 Unlike the results of the other studies, the effect sizes reported by Lesko (11) varied widely and even
7
8
9 changed the sign when different patterns of baldness were compared (Fig. 4). This study had the
10
11
12 lowest validity score (6/9 points on the Newcastle-Ottawa scale) among the six studies included in
13
14
15 our meta-analysis (**Supplementary Data 2**). Lesko et al. contacted the coronary care units of
16
17
18 participating hospitals to identify potential subjects with their first myocardial infarction and to
19
20
21 obtain permission to conduct an interview. Thus, details about CHD were not obtained in this
22
23
24 study, which might have led to bias and influenced the effect size.

25
26 Moreover, as already reported by Rebora et al. (33), Lotufo et al. (10) relied on each patient's
27
28
29 memory of a condition that had developed up to 40 years before, which might have led to recall bias.

30
31
32 These two studies would have a higher risk of misclassification bias that could lead to
33
34
35 underestimating the strength of the association between baldness and CHD, since it is often
36
37
38 considered shameful to admit to the existence of baldness.

39
40
41 The third limitation was incomplete information about the use of medications such as anticoagulants,
42
43
44 anticonvulsants, beta-blockers, antidepressants, and hormone replacement therapy that may have
45
46
47 contributed to baldness (34).

48
49
50 Fourth, the methods used to assess baldness varied between studies, which meant that we could not
51
52
53 rule out other local causes of diffuse hair loss (alopecia areata or nonscarring alopecia), as well as
54
55
56 possible systemic causes (e.g., thyroiditis, iron deficiency (35,36), trauma, excessive dieting, or
57
58
59

1
2
3
4
5
6 debilitating diseases).

7
8
9 Even with such limitations, the present meta-analysis provided useful evidence regarding the
10
11 potential influence of baldness on CHD. Patients and physicians should consider the possibility that
12
13 baldness is associated with an increased risk of CHD.
14
15

16 17 18 19 20 *Conclusions*

21
22
23 In the present meta-analysis, vertex baldness was associated with an increased risk of CHD among
24
25 younger men as well as among all subjects, and the relation was dependent on the severity of
26
27 baldness. These findings suggest that vertex baldness is more closely associated with systemic
28
29 atherosclerosis than frontal baldness. Thus, cardiovascular risk factors should be reviewed carefully
30
31 in men with vertex baldness, especially younger men, and they should be encouraged to improve
32
33 their cardiovascular risk profile.
34
35
36
37
38

39
40 In addition, the relationship between baldness and CHD should be investigated by further studies,
41
42 including well-designed and controlled cohort studies, in order to confirm whether persons with
43
44 male pattern baldness (especially severe vertex baldness) have an increased risk of CHD.
45
46
47
48
49
50
51
52
53
54
55
56
57
58
59
60

Contributors

TY, KH and TK conceived the idea of the study and were responsible for the design of the study. TY and KH were responsible for undertaking for the data analysis and produced the tables and figures. TY and KH provided input into the data analysis. The initial draft of the manuscript was prepared by TY and KH and then circulated repeatedly among all authors for critical revision. TY was responsible for the acquisition of the data and TY, KH and TK contributed to the interpretation of the results.

Copyright/licence for publication

The Corresponding Author has the right to grant on behalf of all authors and does grant on behalf of all authors, an exclusive licence (or non-exclusive for government employees) on a worldwide basis to the BMJ Publishing Group Ltd. and its Licensees to permit this article (if accepted) to be published in BMJ editions and any other BMJ PGL products and sublicences to exploit all subsidiary rights, as set out in our licence (<http://resources.bmj.com/bmj/authors/checklists-forms/licence-for-publication>).

Competing Interests

All authors have completed the Unified Competing Interest form at www.icmje.org/coi_disclosure.pdf (available on request from the corresponding author) and declare:

1
2
3
4
5
6 no support from any organisation for the submitted work; no financial relationships with any
7
8
9 organisations that might have an interest in the submitted work in the previous three years; no other
10
11
12 relationships or activities that could appear to have influenced the submitted work.
13

14
15 ***Ethical approval***

16
17 Not needed.
18
19

20
21 ***Funding statement***

22
23 This research received no specific grant from any funding agency in the public, commercial or
24
25 not-for-profit sectors.
26
27
28
29
30
31
32
33
34

35
36 ***Supplementary Data***

37
38 **Supplementary Data 1. PRISMA Checklist.**

39
40 **Supplementary Data 2. Newcastle-Ottawa quality assessment scale for observational studies**
41
42
43
44
45
46
47
48
49
50
51
52
53
54
55
56
57
58
59
60

References

1. Lopez AD, Mathers CD, Ezzati M, *et al.* Global and regional burden of disease and risk factors, 2001: systematic analysis of population health data. *Lancet* 2006;367:1747-57.
2. Lerner DJ, Kannel WB. Patterns of coronary heart disease morbidity and mortality in the sexes: a 26-year follow-up of the Framingham population. *Am Heart J* 1986;111:383-90.
3. Young LH, Wackers FJ, Chyun DA, *et al.*; DIAD Investigators. Cardiac outcomes after screening for asymptomatic coronary artery disease in patients with type 2 diabetes: the DIAD study: a randomized controlled trial. *JAMA* 2009;301:1547-55.
4. McEvoy JW, Blaha MJ, Nasir K, *et al.* Impact of coronary computed tomographic angiography results on patient and physician behavior in a low-risk population. *Arch Intern Med* 2011;171:1260-8.
5. Olsen EA. Androgenetic alopecia. In: Olsen EA ed. *Disorders of Hair Growth: Diagnosis and Treatment*. New York, NY: McGraw-Hill; 1994:257-83.
6. Hamilton JB. Patterned loss of hair in man; types and incidence. *Ann N Y Acad Sci* 1951;53:708-28.
7. Price VH. Treatment of hair loss. *N Engl J Med* 1999;341:964-73.
8. Schnohr P, Lange P, Nyboe J, *et al.* Gray hair, baldness, and wrinkles in relation to myocardial infarction: the Copenhagen City Heart Study. *Am Heart J* 1995;130:1003-10.

- 1
2
3
4
5
6 9. Ford ES, Freedman DS, Byers T. Baldness and ischemic heart disease in a national sample of men.
7
8
9 Am J Epidemiol 1996;143:651-7.
10
11
12 10. Lotufo PA, Chae CU, Ajani UA, *et al.* Male pattern baldness and coronary heart disease: the
13
14 Physicians' Health Study. Arch Intern Med 2000;160:165-71.
15
16
17 11. Lesko SM, Rosenberg L, Shapiro S. A case-control study of baldness in relation to myocardial
18
19 infarction in men. JAMA 1993;269:998-1003.
20
21
22 12. Mirić D, Fabijanić D, Giunio L, *et al.* Dermatological indicators of coronary risk: a case-control
23
24 study. Int J Cardiol 1998;67:251-5.
25
26
27 13. Shahar E, Heiss G, Rosamond WD, *et al.* Baldness and myocardial infarction in men: the
28
29 atherosclerosis risk in communities study. Am J Epidemiol 2008;167:676-83.
30
31
32 14. von Elm E, Altman DG, Egger M, *et al.* The Strengthening the Reporting of Observational
33
34 Studies in Epidemiology (STROBE) statement: guidelines for reporting observational studies. J Clin
35
36 Epidemiol 2008;61:344-9.
37
38
39 15. Wells G, Shea B, O'Connell D, *et al.* The Newcastle-Ottawa Scale (NOS) for assessing the
40
41 quality of nonrandomised studies in meta-analyses [Internet]. Ottawa Hospital Research Institute.
42
43 Available from http://www.ohri.ca/programs/clinical_epidemiology/oxford.asp. Accessed 4
44
45
46
47
48
49
50
51
52
53
54
55
56
57
58
59
60

- 1
2
3
4
5
6 16. Higgins JP, Thompson SG. Quantifying heterogeneity in a meta-analysis. *Stat Med*
7
8
9 2002;21:1539-58.
10
11
12 17. Stroup DF, Berlin JA, Morton SC, *et al.* Meta-analysis of observational studies in epidemiology:
13
14 a proposal for reporting. Meta-analysis Of Observational Studies in Epidemiology (MOOSE) group.
15
16
17
18
19 JAMA 2000;283:2008-12.
20
21 18. Liberati A, Altman DG, Tetzlaff J, *et al.* The PRISMA statement for reporting systematic reviews
22
23 and meta-analyses of studies that evaluate health care interventions: explanation and elaboration.
24
25
26
27
28 Ann Intern Med 2009;151:W65-94.
29
30 19. Norwood OT. Male pattern baldness: classification and incidence. *South Med J*
31
32
33 1975;68:1359-65.
34
35 20. Messenger AG, Rundegren J. Minoxidil: mechanisms of action on hair growth. *Br J Dermatol*
36
37
38 2004;150:186-94.
39
40
41 21. Scow DT, Nolte RS, Shaughnessy AF. Medical treatments for balding in men. *Am Fam*
42
43
44
45
46
47
48
49
50
51
52
53
54
55
56
57
58
59
60
61
62
63
64
65
66
67
68
69
70
71
72
73
74
75
76
77
78
79
80
81
82
83
84
85
86
87
88
89
90
91
92
93
94
95
96
97
98
99
100
101
102
103
104
105
106
107
108
109
110
111
112
113
114
115
116
117
118
119
120
121
122
123
124
125
126
127
128
129
130
131
132
133
134
135
136
137
138
139
140
141
142
143
144
145
146
147
148
149
150
151
152
153
154
155
156
157
158
159
160
161
162
163
164
165
166
167
168
169
170
171
172
173
174
175
176
177
178
179
180
181
182
183
184
185
186
187
188
189
190
191
192
193
194
195
196
197
198
199
200
201
202
203
204
205
206
207
208
209
210
211
212
213
214
215
216
217
218
219
220
221
222
223
224
225
226
227
228
229
230
231
232
233
234
235
236
237
238
239
240
241
242
243
244
245
246
247
248
249
250
251
252
253
254
255
256
257
258
259
260
261
262
263
264
265
266
267
268
269
270
271
272
273
274
275
276
277
278
279
280
281
282
283
284
285
286
287
288
289
290
291
292
293
294
295
296
297
298
299
300
301
302
303
304
305
306
307
308
309
310
311
312
313
314
315
316
317
318
319
320
321
322
323
324
325
326
327
328
329
330
331
332
333
334
335
336
337
338
339
340
341
342
343
344
345
346
347
348
349
350
351
352
353
354
355
356
357
358
359
360
361
362
363
364
365
366
367
368
369
370
371
372
373
374
375
376
377
378
379
380
381
382
383
384
385
386
387
388
389
390
391
392
393
394
395
396
397
398
399
400
401
402
403
404
405
406
407
408
409
410
411
412
413
414
415
416
417
418
419
420
421
422
423
424
425
426
427
428
429
430
431
432
433
434
435
436
437
438
439
440
441
442
443
444
445
446
447
448
449
450
451
452
453
454
455
456
457
458
459
460
461
462
463
464
465
466
467
468
469
470
471
472
473
474
475
476
477
478
479
480
481
482
483
484
485
486
487
488
489
490
491
492
493
494
495
496
497
498
499
500
501
502
503
504
505
506
507
508
509
510
511
512
513
514
515
516
517
518
519
520
521
522
523
524
525
526
527
528
529
530
531
532
533
534
535
536
537
538
539
540
541
542
543
544
545
546
547
548
549
550
551
552
553
554
555
556
557
558
559
560
561
562
563
564
565
566
567
568
569
570
571
572
573
574
575
576
577
578
579
580
581
582
583
584
585
586
587
588
589
590
591
592
593
594
595
596
597
598
599
600
601
602
603
604
605
606
607
608
609
610
611
612
613
614
615
616
617
618
619
620
621
622
623
624
625
626
627
628
629
630
631
632
633
634
635
636
637
638
639
640
641
642
643
644
645
646
647
648
649
650
651
652
653
654
655
656
657
658
659
660
661
662
663
664
665
666
667
668
669
670
671
672
673
674
675
676
677
678
679
680
681
682
683
684
685
686
687
688
689
690
691
692
693
694
695
696
697
698
699
700
701
702
703
704
705
706
707
708
709
710
711
712
713
714
715
716
717
718
719
720
721
722
723
724
725
726
727
728
729
730
731
732
733
734
735
736
737
738
739
740
741
742
743
744
745
746
747
748
749
750
751
752
753
754
755
756
757
758
759
760
761
762
763
764
765
766
767
768
769
770
771
772
773
774
775
776
777
778
779
780
781
782
783
784
785
786
787
788
789
790
791
792
793
794
795
796
797
798
799
800
801
802
803
804
805
806
807
808
809
810
811
812
813
814
815
816
817
818
819
820
821
822
823
824
825
826
827
828
829
830
831
832
833
834
835
836
837
838
839
840
841
842
843
844
845
846
847
848
849
850
851
852
853
854
855
856
857
858
859
860
861
862
863
864
865
866
867
868
869
870
871
872
873
874
875
876
877
878
879
880
881
882
883
884
885
886
887
888
889
890
891
892
893
894
895
896
897
898
899
900
901
902
903
904
905
906
907
908
909
910
911
912
913
914
915
916
917
918
919
920
921
922
923
924
925
926
927
928
929
930
931
932
933
934
935
936
937
938
939
940
941
942
943
944
945
946
947
948
949
950
951
952
953
954
955
956
957
958
959
960
961
962
963
964
965
966
967
968
969
970
971
972
973
974
975
976
977
978
979
980
981
982
983
984
985
986
987
988
989
990
991
992
993
994
995
996
997
998
999
1000

- 1
2
3
4
5
6 24. Ahouansou S, Le Toumelin P, Crickx B, *et al.* Association of androgenetic alopecia and
7
8 hypertension. *Eur J Dermatol* 2007;17:220-2.
9
10
11 25. Matilainen V, Koskela P, Keinänen-Kiukaanniemi S. Early androgenetic alopecia as a marker of
12
13 insulin resistance. *Lancet* 2000;356:1165-6.
14
15
16
17 26. Arias-Santiago S, Gutiérrez-Salmerón MT, Castellote-Caballero L, *et al.* Male androgenetic
18
19 alopecia and cardiovascular risk factors: A case-control study. *Actas Dermosifiliogr*
20
21
22 2010;101:248-56.
23
24
25
26 27. Yudkin JS, Stehouwer CD, Emeis JJ, *et al.* C-reactive protein in healthy subjects: associations
27
28 with obesity, insulin resistance, and endothelial dysfunction: a potential role for cytokines
29
30 originating from adipose tissue? *Arterioscler Thromb Vasc Biol* 1999;19:972-8.
31
32
33
34 28. Hirso P, Rajala U, Hiltunen L, *et al.* Obesity and low-grade inflammation among young Finnish
35
36 men with early-onset alopecia. *Dermatology* 2007;214:125-9.
37
38
39
40 29. Ridker PM. Clinical application of C-reactive protein for cardiovascular disease detection and
41
42 prevention. *Circulation* 2003;107:363-9.
43
44
45
46 30. Hibberts NA, Howell AE, Randall VA. Balding hair follicle dermal papilla cells contain higher
47
48 levels of androgen receptors than those from non-balding scalp. *J Endocrinol* 1998;156:59-65.
49
50
51
52 31. Demark-Wahnefried W, Lesko SM, Conaway MR, *et al.* Serum androgens: associations with
53
54 prostate cancer risk and hair patterning. *J Androl* 1997;18:495-500.
55
56
57
58
59
60

- 1
2
3
4
5
6 32. Fujimoto R, Morimoto I, Morita E, *et al.* Androgen receptors, 5alpha-reductase activity and
7
8
9 androgen-dependent proliferation of vascular smooth muscle cells. *J Steroid Biochem Mol Biol*
10
11
12 1994;50:169-74.
13
14 33. Rebora A. Baldness and coronary artery disease: the dermatologic point of view of a
15
16
17 controversial issue. *Arch Dermatol* 2001;137:943-7.
18
19
20 34. Llau ME, Viraben R, Montastruc JL. [Drug-induced alopecia: review of the literature]. *Therapie*
21
22
23 1995;50:145-50.
24
25
26 35. Trost LB, Bergfeld WF, Calogeras E. The diagnosis and treatment of iron deficiency and its
27
28
29 potential relationship to hair loss. *J Am Acad Dermatol* 2006;54:824-44.
30
31
32 36. Olsen EA. Iron deficiency and hair loss: the jury is still out. *J Am Acad Dermatol* 2006;54:903-6.
33
34
35
36
37
38
39
40
41
42
43
44
45
46
47
48
49
50
51
52
53
54
55
56
57
58
59
60

1
2
3
4
5
6 **Figure legends**
7

8
9 **Figure 1. Flow diagram of study selection.**
10

11
12 **Figure 2. Association of baldness with CHD in the 3 cohort studies.**
13

14 The forest plot shows the association between male pattern baldness and the risk of coronary heart
15 disease (CHD). CI=confidence interval; RR=relative risk.
16
17
18

19
20
21 **Figure 3. Association of baldness with CHD in the 3 case-control studies.**
22

23 The forest plot shows the association between male pattern baldness and the risk of coronary heart
24 disease (CHD). CI=confidence interval; RR=relative risk.
25
26
27

28
29 **Figure 4. Association of baldness with CHD in studies using the modified Hamilton scale.**
30

31 The forest plot shows the association between male pattern baldness and the risk of coronary heart
32 disease (CHD). CI=confidence interval; RR=relative risk
33
34
35
36
37
38
39
40
41
42
43
44
45
46
47
48
49
50
51
52
53
54
55
56
57
58
59
60

Table 1. Summary of studies evaluating the association between baldness and coronary heart disease

First author, year	Type of study	Country	Subjects	CHD (events)	Assessment of baldness	Follow-up (years)	Covariates used for adjustment
Schnohr, 1995 (8)	Cohort	Denmark	5837	Myocardial infarction (750)	Simplified Hamilton (None, Frontoparietal, Crown-top, Combined)	12.0	Age, smoking, systolic blood pressure, cholesterol, triglycerides, physical activity, BMI, family history of MI, marital status, education, economic status, diabetes, and alcohol consumption
Ford, 1996 (9)	Cohort	USA	3994	Ischemic heart disease (965)	Personal scale (None, Minimum, Moderate, Severe)	14.0	Age, age squared, race, education, systolic blood pressure, antihypertensive medication, cholesterol, smoking, BMI, and diabetes mellitus
Lotufo, 2000 (10)	Cohort	USA	19112	Nonfatal MI, angina, coronary revascularization (1446)	Modified Hamilton (None, Frontal, Mild vertex, Moderate vertex, Severe vertex)	11.0	Age, aspirin assignment, beta carotene assignment, BMI, height (cm), hypertension, hypercholesterolemia, diabetes, parental history of MI, physical activity, smoking, and alcohol use.

1	Lesko,	Case-	USA	1437	Non-fatal	Modified Hamilton (None,	-	Age, race, religion, years of education, BMI, use of
2								
3								
4	1993 (11)	control			Myocardial	Frontal only, Mild vertex,		alcohol and cigarettes, family history of myocardial
5								
6					infarction (665)	Moderate vertex, Severe vertex)		infarction, personal history of angina, hypertension,
7								
8								diabetes, hypercholesterolemia, gout, exercise,
9								
10								personality, and number of doctor visits in the past year.
11								
12								
13	Miric,	Case-	Croatia	1554	Non-fatal	Personal score (None, Any,	-	Age, family history of MI, hypertension,
14								
15	1998 (12)	control			Myocardial	Frontal, Parietal, Fronto-parietal)		hypercholesterolemia, BMI, diabetes, and smoking.
16								
17					infarction (842)			
18								
19								
20	Shahar,	Case-	USA	5056	Non-fatal	Modified Hamilton (None,	-	Age, smoking, BMI, race-center, cholesterol-lowering
21								
22	2008 (13)	control			Myocardial	Frontal, Mild vertex, Moderate		medication, antihypertensive medication, HDL,
23								
24					infarction (767)	vertex, Severe vertex)		diabetes, educational level, and family history of MI.
25								
26								

27 CHD, coronary heart disease; BMI, body mass index; MI, myocardial infarction; AGA, androgenic alopecia; HDL, high density lipoprotein;

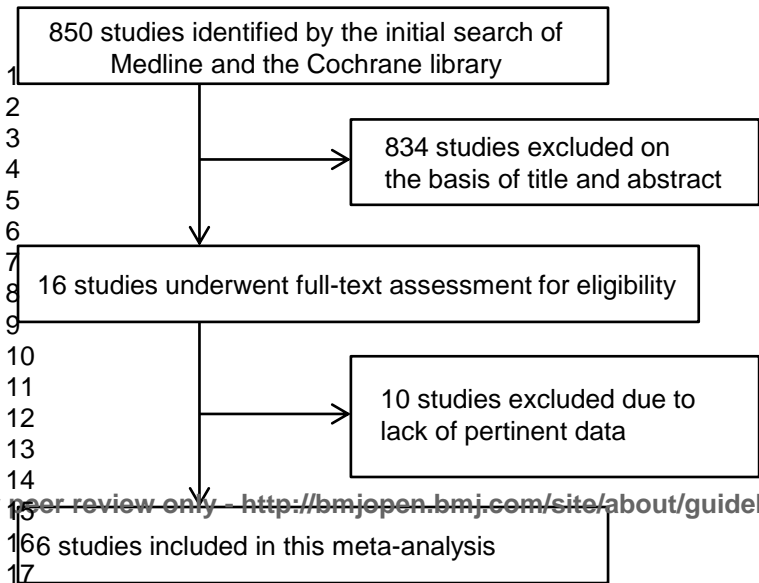
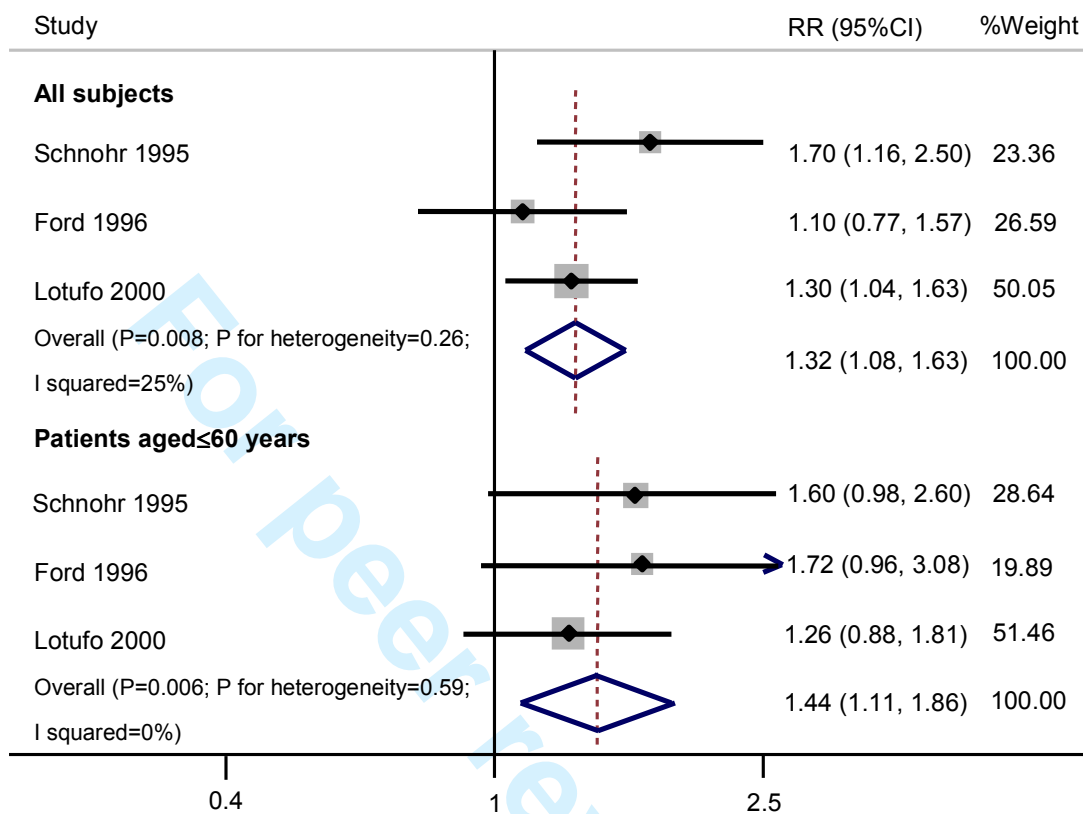


Fig. 2



1
2
3
4
5
6
7
8
9
10
11
12
13
14
15
16
17
18
19
20
21
22
23
24
25
26
27
28
29
30
31
32
33
34
35
36
37
38
39
40
41
42
43
44
45
46
47
48
49
50
51
52
53
54
55
56
57
58
59
60

1
2
3
4
5
6
7
8
9
10
11
12
13
14
15
16
17
18
19
20
21
22
23
24
25
26
27
28
29
30
31
32
33
34
35
36
37
38
39
40
41
42
43
44
45
46
47
48
49
50
51
52
53
54
55
56
57
58
59
60

Fig. 3

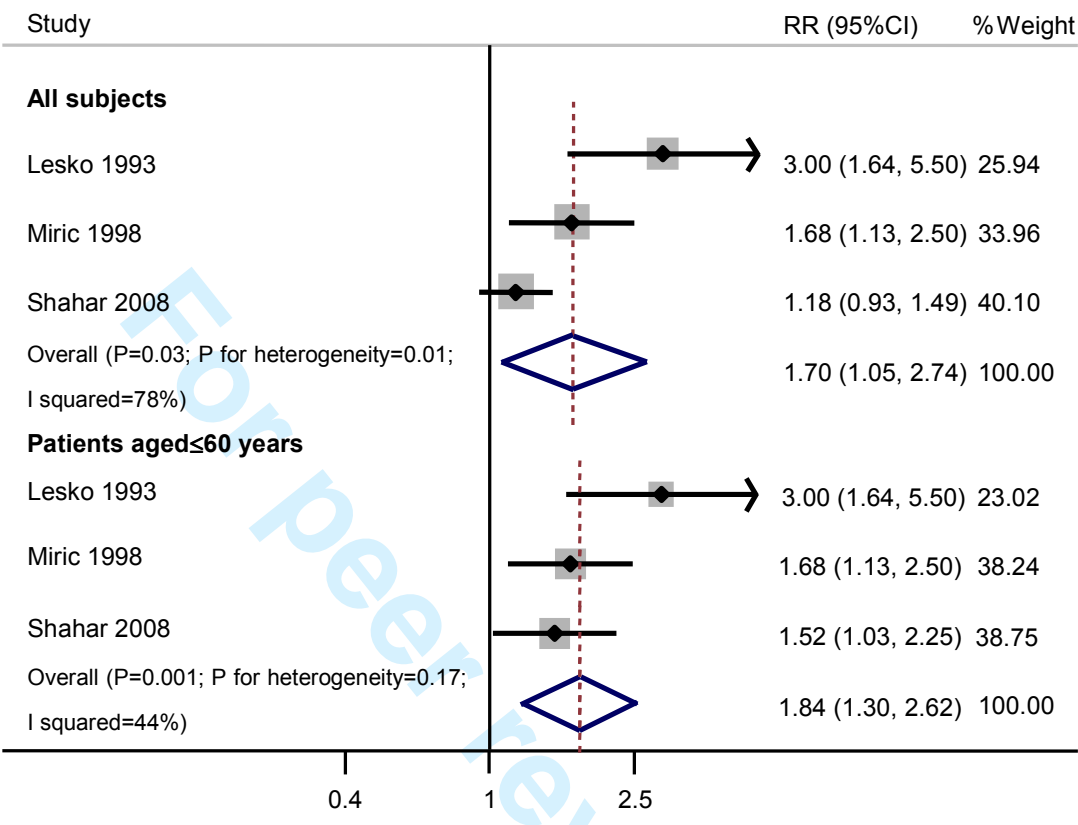
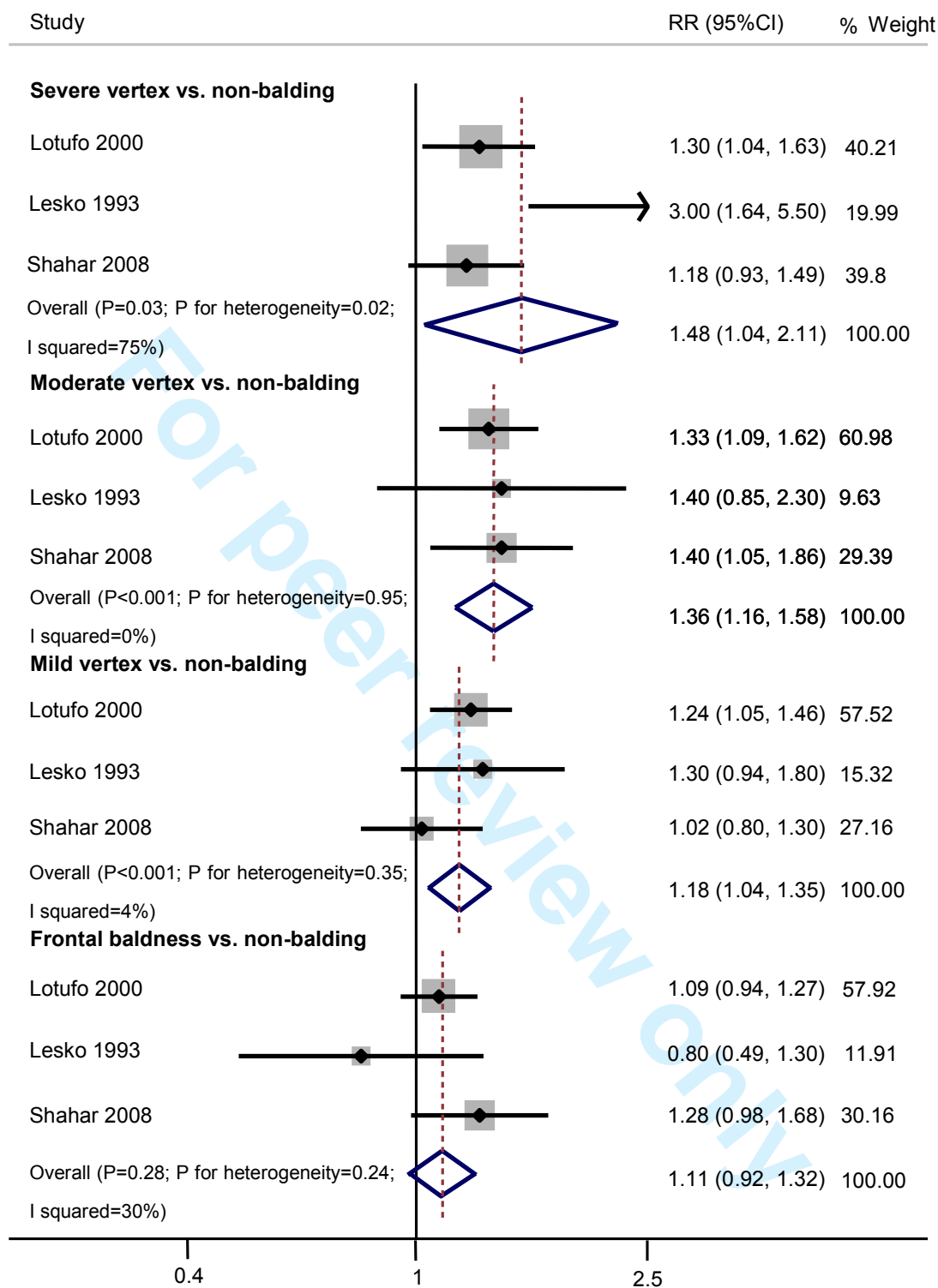


Fig. 4





PRISMA 2009 Checklist

Section/topic	#	Checklist item	Reported on page #
TITLE			
Title	1	Identify the report as a systematic review, meta-analysis, or both.	1
ABSTRACT			
Structured summary	2	Provide a structured summary including, as applicable: background; objectives; data sources; study eligibility criteria, participants, and interventions; study appraisal and synthesis methods; results; limitations; conclusions and implications of key findings; systematic review registration number.	2-3
INTRODUCTION			
Rationale	3	Describe the rationale for the review in the context of what is already known.	5-6
Objectives	4	Provide an explicit statement of questions being addressed with reference to participants, interventions, comparisons, outcomes, and study design (PICOS).	5-6
METHODS			
Protocol and registration	5	Indicate if a review protocol exists, if and where it can be accessed (e.g., Web address), and, if available, provide registration information including registration number.	6
Eligibility criteria	6	Specify study characteristics (e.g., PICOS, length of follow-up) and report characteristics (e.g., years considered, language, publication status) used as criteria for eligibility, giving rationale.	6
Information sources	7	Describe all information sources (e.g., databases with dates of coverage, contact with study authors to identify additional studies) in the search and date last searched.	6-7
Search	8	Present full electronic search strategy for at least one database, including any limits used, such that it could be repeated.	6
Study selection	9	State the process for selecting studies (i.e., screening, eligibility, included in systematic review, and, if applicable, included in the meta-analysis).	6-7
Data collection process	10	Describe method of data extraction from reports (e.g., piloted forms, independently, in duplicate) and any processes for obtaining and confirming data from investigators.	6-7
Data items	11	List and define all variables for which data were sought (e.g., PICOS, funding sources) and any assumptions and simplifications made.	7
Risk of bias in individual studies	12	Describe methods used for assessing risk of bias of individual studies (including specification of whether this was done at the study or outcome level), and how this information is to be used in any data synthesis.	7
Summary measures	13	State the principal summary measures (e.g., risk ratio, difference in means).	7-8
Synthesis of results	14	Describe the methods of handling data and combining results of studies, if done, including measures of consistency (e.g., I^2) for each meta-analysis.	7-8



PRISMA 2009 Checklist

Section/topic	#	Checklist item	Reported on page #
Risk of bias across studies	15	Specify any assessment of risk of bias that may affect the cumulative evidence (e.g., publication bias, selective reporting within studies).	7-8
Additional analyses	16	Describe methods of additional analyses (e.g., sensitivity or subgroup analyses, meta-regression), if done, indicating which were pre-specified.	7-8
RESULTS			
Study selection	17	Give numbers of studies screened, assessed for eligibility, and included in the review, with reasons for exclusions at each stage, ideally with a flow diagram.	9, Fig 1
Study characteristics	18	For each study, present characteristics for which data were extracted (e.g., study size, PICOS, follow-up period) and provide the citations.	9, Table 1
Risk of bias within studies	19	Present data on risk of bias of each study and, if available, any outcome level assessment (see item 12).	9, Table 1
Results of individual studies	20	For all outcomes considered (benefits or harms), present, for each study: (a) simple summary data for each intervention group (b) effect estimates and confidence intervals, ideally with a forest plot.	9-10, Table 1, Fig 2-4
Synthesis of results	21	Present results of each meta-analysis done, including confidence intervals and measures of consistency.	10-12, Fig 2-4
Risk of bias across studies	22	Present results of any assessment of risk of bias across studies (see Item 15).	10-12 Suppl.2
Additional analysis	23	Give results of additional analyses, if done (e.g., sensitivity or subgroup analyses, meta-regression [see Item 16]).	11-13
DISCUSSION			
Summary of evidence	24	Summarize the main findings including the strength of evidence for each main outcome; consider their relevance to key groups (e.g., healthcare providers, users, and policy makers).	14-15
Limitations	25	Discuss limitations at study and outcome level (e.g., risk of bias), and at review-level (e.g., incomplete retrieval of identified research, reporting bias).	16-18
Conclusions	26	Provide a general interpretation of the results in the context of other evidence, and implications for future research.	18
FUNDING			
Funding	27	Describe sources of funding for the systematic review and other support (e.g., supply of data); role of funders for the systematic review.	19-20



PRISMA 2009 Checklist

1
2
3
4
5
6
7
8
9
10
11
12
13
14
15
16
17
18
19
20
21
22
23
24
25
26
27
28
29
30
31
32
33
34
35
36
37
38
39
40
41
42
43
44
45
46
47
48
49

doi:10.1371/journal.pmed1000097

For more information, visit: www.prisma-statement.org.

Page 2 of 2

For peer review only

Supplementary Data 2. Newcastle-Ottawa quality assessment scale for observational studies

Study reference (author, year)	Selection	Comparability	Outcome/Exposure
Cohort studies			
Schnohor, 1995 (8)	***	**	***
Ford, 1996 (9)	***	**	***
Lotufo, 2000 (10)	***	**	***
Case-control studies			
Lesko, 1993 (11)	**	**	**
Miric, 1998 (12)	***	**	**
Shahar, 2008 (13)	****	**	**



Male Pattern Baldness and Its Association with Coronary Heart Disease: A Meta-Analysis

Journal:	<i>BMJ Open</i>
Manuscript ID:	bmjopen-2012-002537.R1
Article Type:	Research
Date Submitted by the Author:	08-Feb-2013
Complete List of Authors:	Yamada, Tomohide; University of Tokyo, Department of Diabetes and Metabolic Diseases Hara, Kazuo; University of Tokyo, Department of Diabetes and Metabolic Diseases Umematsu, Hitomi; University of Tokyo, Department of Diabetes and Metabolic Diseases Kadowaki, Takashi; University of Tokyo, Department of Diabetes and Metabolic Diseases
Primary Subject Heading:	Dermatology
Secondary Subject Heading:	Cardiovascular medicine, Diabetes and endocrinology, Diagnostics, Epidemiology, Health economics
Keywords:	Coronary heart disease < CARDIOLOGY, Ischaemic heart disease < CARDIOLOGY, Adult dermatology < DERMATOLOGY, Dermatological epidemiology < DERMATOLOGY, EPIDEMIOLOGY

SCHOLARONE™
Manuscripts

only

1
2
3
4
5
6 **Male Pattern Baldness and Its Association with Coronary Heart Disease: A Meta-Analysis**
7

8
9 Tomohide Yamada, MD

10
11 Kazuo Hara, MD, PhD*

12
13 Hitomi Umematsu, MD

14
15
16
17 Takashi Kadowaki, MD, PhD

18
19
20 Department of Diabetes and Metabolic Diseases, Graduate School of Medicine

21
22 University of Tokyo, Japan

23
24
25
26 * Corresponding author

27
28
29 7-3-1 Hongo, Bunkyo, Tokyo 113-8655, Japan

30
31
32 Tel.: +81-3-5800-8818; Fax: +81-3-5689-7209

33
34
35 E-mail address: haratky@gmail.com

36
37
38
39
40
41 **Brief title:** Male pattern baldness and CHD

42
43
44
45
46
47 **Word count:** 3691 words

1
2
3
4
5
6 **Abstract**
7

8
9 **Objective:**

10
11 To confirm the association between male pattern baldness and coronary heart disease (CHD).
12
13

14
15 **Design:**

16
17 Meta-analysis of observational studies.
18
19

20
21 **Data sources:**

22
23 Medline and the Cochrane Library were searched for articles published up to November 2012 using
24
25 keywords that included both 'baldness' and 'coronary heart disease' and the reference lists of those
26
27 studies identified were also searched.
28
29
30

31
32 **Study selection:**

33
34 Observational studies were identified that reported risk estimates for CHD related to baldness. Two
35
36 observers independently assessed eligibility, extracted data, and assessed the possibility of bias.
37
38
39

40
41 **Data synthesis:**

42
43 The adjusted relative risk (RR) and 95% confidence interval (95%CI) were estimated using the
44
45 DerSimonian-Laird random-effect model.
46
47
48

49
50 **Results:**

51
52 Included 850 possible studies, three cohort studies and three case-control studies were selected
53
54
55 (36,990 subjects).
56
57
58
59
60

1
2
3
4
5
6 In the cohort studies, the adjusted RR of men with severe baldness for CHD was 1.32 (95%CI: 1.08 -
7
8
9 1.63, $P = 0.008$, $I^2 = 25\%$) versus those without baldness. Analysis of younger men (<55 or ≤60
10
11
12 years) showed a similar association of CHD with severe baldness (RR: 1.44, 95%CI: 1.11 - 1.86, $P =$
13
14 0.006, $I^2 = 0\%$).

15
16
17 In 3 studies employing the modified Hamilton scale, vertex baldness was associated with CHD and
18
19
20 the relation depended on the severity of baldness (severe vertex: RR 1.48 (1.04 - 2.11, $P = 0.03$);
21
22
23 moderate vertex: RR 1.36 (1.16 - 1.58, $P < 0.001$); mild vertex: RR 1.18 (1.04 - 1.35, $P < 0.001$).
24
25
26 However, frontal baldness was not associated with CHD (RR 1.11 (0.92 - 1.32, $P = 0.28$)).
27
28

29 **Conclusion:**

30
31
32 Vertex baldness, but not frontal baldness, is associated with an increased risk of CHD. The
33
34
35 association with CHD depends on the severity of vertex baldness and also exists among younger
36
37
38 men. Thus, vertex baldness might be more closely related to atherosclerosis than frontal baldness,
39
40
41 but the association between male pattern baldness and CHD deserves further investigation.
42
43
44
45

46
47 **Key words:** male pattern baldness, androgenetic alopecia, coronary heart disease, cardiovascular
48
49
50 disease, relative risk, meta-analysis
51
52
53
54
55
56
57
58
59
60

1
2
3
4
5
6 **Article summary**
7

8
9 **Article focus:**
10

11 • The present meta-analysis aimed to confirm the association of male pattern baldness (androgenetic
12 alopecia) with an increased risk of coronary heart disease (CHD).
13
14

15
16
17 **Key messages:**
18

19
20 • Meta-analysis of 6 observational studies with a total of 36,690 subjects showed that vertex baldness
21 is associated with an increased risk of CHD and that the relationship depends upon the severity of
22 baldness, while frontal baldness is not.
23
24

25
26 • Thus, vertex baldness might be a marker of CHD and is more closely associated with systemic
27 atherosclerosis than frontal baldness.
28

29
30 • This potential relationship should be investigated in further studies, including well-designed
31 prospective studies.
32
33

34
35 **Strengths and limitations of this study:**
36

37
38 • This was the first meta-analysis of the association between baldness and CHD; it showed that the
39 relationship depends on the severity of baldness.
40
41

42
43 • The cohort studies had a long follow-up period of 11.0 - 14.0 years.
44

45
46 • A weakness might be the small number of studies analyzed.
47
48
49
50
51
52
53
54
55
56
57
58
59
60

Introduction

Coronary heart disease (CHD) is a major cause of death and disability worldwide (1). Advanced obstructive CHD can exist in patients with minimal or no symptoms and can progress rapidly (2), so early detection is extremely important. Many clinicians carry out screening for asymptomatic CHD and participants in wellbeing programs often also request such screening, but the usefulness of CHD screening has yet to be confirmed. Young et al. (2009) reported that the incidence of CHD was not significantly reduced in asymptomatic diabetic patients when screening was conducted by myocardial scintigraphy (3), and McEvoy et al. (2011) also reported that coronary computed tomography screening of asymptomatic patients without a history of coronary artery disease fails to prevent major cardiovascular events (4).

Male pattern baldness, also called androgenetic alopecia (AGA), is the most common cause of hair loss. It affects approximately 30 to 40% of adult men (5) and it is seen in 80% of men by the age of 80 years (6). AGA is considered to be a heritable, androgen-dependent condition that is characterized by varying degrees of thinning/hair loss primarily at the vertex and the frontal areas (temples) of the scalp. In men with AGA, the thin residual hairs tend to be of various lengths and diameters since each follicle is in a different phase of the hair cycle, so the presence of variations in hair length and texture is a classic feature of this thinning condition (7).

Several recent studies have shown that baldness is associated with the risk of CHD (8-12). These

1
2
3
4
5
6 studies have generally found a positive association between baldness and CHD, although the
7
8
9 strength of the association has varied (8-13).

10
11 Clarifying the relationship between baldness and CHD could lead to more effective approaches to
12
13 the early detection of heart disease, since it might permit the reliable identification of persons with
14
15 an increased risk of suffering from a cardiac event thereby allowing the delivery of appropriate
16
17 therapy (e.g., antihypertensive or lipid-lowering therapy) to improve the prognosis of such high-risk
18
19 persons. Accordingly, we performed a meta-analysis to further assess the influence of male pattern
20
21 baldness (AGA) on CHD.
22
23
24
25
26
27
28
29
30
31

32 **Methods**

33 *Search strategy*

34
35
36
37 The Medline and Cochrane Library electronic databases were searched from January 1, 1950 until
38
39 November 27, 2012 using the medical subject headings “Baldness” (“baldness” or “hair loss” or
40
41 “alopecia”) and “Coronary heart disease” (“coronary heart disease” or “cardiovascular disease” or
42
43 “coronary artery disease”) to identify observational studies that estimated the association between
44
45 baldness and CHD. The reference lists of all studies identified were also reviewed.
46
47
48
49
50
51

52 *Study selection*

1
2
3
4
5
6 We performed initial screening based on the study titles or abstracts, while the second screening
7
8
9 involved a full-text review. Cohort studies, case-control studies, and cross-sectional studies that
10
11
12 assessed the association between male pattern baldness and CHD were eligible for inclusion if the
13
14
15 following criteria were met: 1) the full text of the report was published in English, 2) the relative risk
16
17
18 (risk ratio, hazard ratio, or odds ratio) was reported with adjustment for possible covariates (e.g. age,
19
20
21 smoking, family history of baldness, or family history of CHD), 3) the presence and severity of male
22
23
24 pattern baldness was reported, and 4) CHD events were reported.
25
26
27
28

29 *Definitions of baldness and CHD*

30
31
32 Baldness was defined according to the description in the history and/or on the basis of terms such
33
34
35 as AGA and male pattern hair loss. We excluded studies that analyzed men with other types of
36
37
38 baldness (e.g., alopecia areata or scarring alopecia). CHD was defined as including all of the
39
40
41 following: coronary artery disease, myocardial infarction, angina pectoris, cardiomyopathy, and
42
43
44 other types of ischemic heart disease.
45
46
47
48

49 *Assessment of validity*

50
51
52 To ascertain the validity of the eligible studies, the quality of each report was appraised with
53
54
55 reference to the STROBE statement (14). Moreover, the Newcastle-Ottawa Scale for assessing
56
57
58
59
60

1
2
3
4
5
6 quality of non-randomized studies in meta-analyses was used to quantify the validity of each study
7
8
9 (15).

10 11 12 13 14 15 **Data extraction**

16
17 Two investigators (T.Y. and K.H.) independently reviewed each study to determine its eligibility,
18
19 and then extracted and tabulated all of the relevant data. Disagreement was resolved by consensus
20
21 between the two investigators.
22
23

24
25 The following information was obtained from each study: first author, year of publication, type of
26
27 study, country where the study was conducted, number of subjects (all subjects who participated in
28
29 the study), CHD events, method of assessing baldness, follow-up period, mean age, smoking,
30
31 covariates used for adjustment during analysis, and severity of baldness.
32
33
34
35
36
37
38
39
40

41 **Statistical analysis**

42
43 The pooled relative risk (RR) adjusted for possible covariates and its 95% confidence interval
44
45 (95%CI) were calculated for the risk of CHD events in each study by the DerSimonian-Laird
46
47 random effect model weighted with inverse variance (16). Equivalence of RRs between the cohort
48
49 studies and the cross-sectional studies was assessed by the z-statistic test. Cochrane's χ^2 test and the
50
51 I^2 test were used to evaluate heterogeneity among studies (17). Possible publication bias was
52
53
54
55
56
57
58
59
60

1
2
3
4
5
6 evaluated by creating a funnel plot of the effect size for each study versus the standard error (SE).
7

8
9 Funnel plot asymmetry was assessed by the Begg (18) and Egger tests (19). All statistical analyses
10
11 were performed with Stata 12.0 software (StataCorp, College Station, TX). Results are expressed as
12
13 the mean with 95%CI, unless otherwise indicated. A *P* value of less than 0.05 was considered
14
15 significant. All procedures were performed in accordance with the guideline published by the
16
17
18
19
20
21
22
23
24
25
26
27
28
29
30
31
32
33
34
35
36
37
38
39
40
41
42
43
44
45
46
47
48
49
50
51
52
53
54
55
56
57
58
59
60
Meta-analysis Of Observational Studies in Epidemiology (MOOSE) group (20) and the PRISMA
statement (21)(Supplementary Data 1).

Results

Literature search

Figure 1 shows a flow chart of the study selection process. We identified a total of 850 reports by searching the databases. Among these, 834 reports were excluded after review of the title and abstract, leaving 16 studies for further evaluation. Ten of these 16 studies were excluded after full text evaluation, chiefly because of the lack of pertinent data. The remaining 6 studies (8-13) fulfilled the inclusion criteria were used for the present meta-analysis.

Study characteristics

The six studies that were selected included three cohort studies and three case-control studies, and

1
2
3
4
5
6 their characteristics are summarized in **Table 1**. There were moderate differences with respect to the
7
8
9 country, number of subjects, and method of assessing baldness. The studies were published between
10
11
12 1993 and 2008. Four studies (9-11,13) were conducted in the USA and the other two (8,12) were
13
14
15 conducted in the European Union. The size of the study populations ranged from 1,437 (11) to
16
17
18 19,112 (10) subjects (mean: 6,165 subjects). In five of the six studies (8,10-13), CHD was defined as
19
20
21 non-fatal myocardial infarction. The mean follow-up period ranged from 11 to 14 years. The method
22
23
24 of assessing baldness varied, with a modified or simplified Hamilton scale being employed in four
25
26
27 studies (8,10,11,13) and a personal scale being used in the other two studies (9,12).

28
29 Three studies (10,11,13) used a modified Hamilton scale that reduced the 12 categories of the
30
31
32 original scale to the following five categories: no baldness (I, II); frontal baldness alone (IIa, III, IIIa,
33
34
35 IVa); mild vertex baldness (III vertex, IV); moderate vertex baldness (V, Va); and severe vertex
36
37
38 baldness (VI, VII). One study (8) used a simplified Hamilton scale, in which the extent of baldness
39
40
41 was classified as follows: none; frontoparietal region (no bald triangle but >3 cm in front of the ear,
42
43
44 or bald triangle but ≤3 cm in front of the ear); crown-top region (thick hair, partly thin hair, bald spot,
45
46
47 or bald top and front); and combined.

48
49 Among the two studies that employed personal scales, Ford et al. (1996) classified baldness as
50
51
52 none, minimum, moderate, or severe (9). Minimum baldness corresponded to no obvious baldness
53
54
55 when the participant walked into the examining room, while moderate baldness was observable
56
57
58
59
60

1
2
3
4
5
6 baldness at the first encounter and severe baldness was obvious at the first encounter. In the other
7
8
9 study, Miric et al. (1998) classified baldness as none, frontal, parietal (vertex), or combined (12).

10
11 The RR for CHD of the subjects with baldness was adjusted for several coronary risk factors (age,
12
13 smoking, diabetes, etc.) in each study, but the number of variables differed significantly among the
14
15
16
17 studies.

18
19
20 The reports on all three cross-sectional studies (11-13) explicitly mentioned the limitations of a
21
22 cross-sectional design (i.e., it cannot assess causality), the possible biases of each study, and the
23
24 influence of covariates. The reports on all three cohort studies (8-10) mentioned the possibility of
25
26
27 misclassification of the severity of baldness.

28
29
30 One study found that baldness was not associated with CHD (13), but the other five studies
31
32
33 concluded that baldness was associated with a significantly increased risk of CHD, although the
34
35
36 strength of the association varied.

37
38
39 According to the Newcastle-Ottawa quality assessment scale for observational studies, all of the
40
41
42 studies used in the present meta-analysis achieved at least six out of nine points, indicating that the
43
44
45 overall quality of the studies was good (**Supplementary Data 2**).

46 47 48 *Association of baldness with CHD*

49
50
51 Among the six studies with a total of 36,990 subjects that were selected (8-13), no study showed a
52
53
54
55
56
57
58
59
60

1
2
3
4
5
6 significant decrease in the risk of CHD for men with baldness.
7

8
9 **Figures 2-4** show the results obtained by combining the RRs for CHD with the random-effect
10
11 model.
12

13
14 In the three cohort studies (8-10), the adjusted RR of CHD for men of all ages with severe baldness
15
16 versus those without baldness was 1.32 (95%CI: 1.08 - 1.63; $P = 0.008$; P for heterogeneity = 0.26; $I^2 = 25\%$) with non-significant heterogeneity. Analysis restricted to younger subjects (<55 years old
17
18
19
20
21
22 or ≤ 60 years old at baseline) revealed a similar association of severe baldness with CHD (RR 1.44
23
24 (95%CI: 1.11 - 1.86; $P = 0.006$; P for heterogeneity = 0.59; $I^2 = 0\%$) with non-significant
25
26
27
28 heterogeneity (**Figure 2**).
29

30
31
32 In the three case-control studies (11-13), the adjusted RR was 1.70 (95%CI: 1.05 - 2.74; $P = 0.03$; P
33
34 for heterogeneity = 0.01; $I^2 = 78\%$) for all subjects, while the RR was 1.84 (95%CI: 1.30 - 2.62; $P =$
35
36
37 0.001; P for heterogeneity = 0.17; $I^2 = 44\%$) among the younger subjects (**Figure 3**). The difference
38
39 of RR values between the cohort and case-control studies was non-significant (all subjects: $P = 0.15$;
40
41
42 patients ≤ 60 years old: $P = 0.07$).
43
44
45
46
47
48

49 ***Stratified analysis***

50
51
52 In the three studies that assessed the severity of baldness by using the modified Hamilton scale
53
54
55 (10,11,13), two studies (10,11) showed that vertex baldness was associated with CHD and that this
56
57
58
59
60

1
2
3
4
5
6 association was dependent on the severity of baldness. In subjects with severe vertex baldness, the
7
8
9 RR was 1.48 (95%CI: 1.04 - 2.11; $P = 0.03$; P for heterogeneity = 0.02; $I^2 = 75\%$), while the RR was
10
11
12 1.36 (95%CI: 1.16 - 1.58; $P < 0.001$; P for heterogeneity = 0.95; $I^2 = 0\%$) for moderate vertex
13
14
15 baldness and 1.18 (95%CI: 1.04 - 1.35; $P < 0.001$; P for heterogeneity = 0.35; $I^2 = 4\%$) for mild
16
17
18 vertex baldness. In contrast, there was non-significant association of frontal baldness with CHD and
19
20
21 the RR was only 1.11 (95%CI: 0.92 - 1.32; $P = 0.28$; P for heterogeneity=0.24; $I^2 = 30\%$) (**Figure**
22
23
24 **4**).

25
26 Because the method of assessing baldness was not homogenous, we also performed a sensitivity
27
28
29 analysis of the studies that used personal scales to classify baldness into four grades (none, frontal,
30
31
32 crown-top, or combined) (8,12). Similar results were obtained showing that the association with
33
34
35 CHD depended on the severity of baldness, with an RR of 1.69 (95%CI: 1.28 - 2.23; $P < 0.001$; P
36
37
38 for heterogeneity = 0.97; $I^2 = 0\%$) for combined baldness, an RR of 1.52 (95%CI: 0.97- 2.39; $P =$
39
40
41 0.07; P for heterogeneity = 0.001; $I^2 = 91\%$) for crown-top baldness, and an RR of 1.22 (95%CI:
42
43
44 0.70 - 2.14; $P = 0.49$; P for heterogeneity = 0.05; $I^2 = 73\%$) for frontal baldness.
45
46
47
48

49 ***Publication bias***

50
51
52 The funnel plot, Begg's test, and Egger's test were used to evaluate the potential influence of
53
54
55 publication bias on the association between baldness and CHD. The funnel plot did not show an
56
57
58
59
60

1
2
3
4
5
6 asymmetric pattern, while Egger's test and Begg's test revealed non-significant publication bias (all
7
8
9 $P \geq 0.05$).

10 11 12 13 14 15 **Discussion**

16
17
18 The present meta-analysis of six studies from the USA and Europe demonstrated that vertex
19
20 baldness was significantly associated with an increased risk of CHD among subjects of all ages and
21
22 also among younger men. Interestingly, frontal baldness was non-significantly associated with CHD.
23
24

25
26 When baldness was classified by the Hamilton-Norwood scale, which is the most commonly used
27
28 classification of male pattern baldness worldwide (22), the relationship between CHD and baldness
29
30 was shown to be dependent on the severity of baldness.
31
32

33
34
35 Our meta-analysis of young men alone also showed a significant relationship between androgenetic
36
37 alopecia (AGA) and the risk of CHD like that revealed by the meta-analysis of men of all ages (Figs.
38
39 2,3). The results were consistent with those of many studies published so far, which have shown that
40
41 early onset of AGA is related to a risk of early severe CHD and its risk factors (23-26).
42
43
44

45
46 These findings support the hypothesis that vertex baldness is a local manifestation of factors
47
48 promoting systemic atherosclerosis, such as metabolic syndrome, hypertension, and smoking.
49
50

51
52 Minoxidil (Rogaine/Regaine) is one of the most popular drugs for the treatment of male pattern
53
54 baldness. Minoxidil was originally developed as an antihypertensive agent (vasodilator) and it is
55
56
57
58
59
60

1
2
3
4
5
6 thought to improve the blood flow and the supply of oxygen and nutrients to the hair follicles by
7
8
9 dilating vessels in the scalp and opening potassium channels. This might lead to the shedding of
10
11
12 hairs in the telogen phase, which are then replaced by thicker hairs in the anagen phase (27).

13
14 Minoxidil is only indicated for vertex baldness and is ineffective for frontal baldness (28), which
15
16
17 supports our finding that vertex baldness is more closely related to atherosclerosis than frontal
18
19
20 baldness.
21
22

23 24 25 26 *Mechanism of the relation between baldness and CHD* 27

28
29 The reason for the association between baldness and CHD is unclear. It has been suggested that
30
31
32 classical coronary risk factors (e.g., age, hypertension, dislipidemia, and smoking) might influence
33
34
35 both conditions, so that baldness is a marker of atherosclerosis. In fact, previous studies have
36
37
38 demonstrated a positive association between male pattern baldness and insulin resistance (23),
39
40
41 metabolic syndrome (29), and hypertension (30). It has also been postulated that baldness is linked
42
43
44 to CHD by mechanisms such as hyperinsulinemia, chronic inflammation, and increased peripheral
45
46
47 sensitivity to androgens, and these are briefly discussed below.

48
49 1) Hyperinsulinemia/insulin resistance is the central factor in metabolic syndrome and it promotes
50
51
52 intolerance of carbohydrates and the development of central (abdominal) obesity. Insulin resistance
53
54
55 has also been shown to cause vasoconstriction and impairs the supply of nutrients to the hair follicles
56
57
58
59
60

1
2
3
4
5
6 of the scalp, as well as enhancing the influence of dihydro-testosterone (DHT) on follicular
7
8
9 miniaturization (24,31).

10
11 2) A proinflammatory state could increase the levels of inflammatory cytokines in the arterial walls
12
13 (32) and hair follicles (25). High-sensitivity C-reactive protein is a marker of inflammation and is
14
15 also a good predictor of future cardiovascular disease (33), so chronic inflammation could be related
16
17
18 to both CHD and baldness.
19
20
21

22
23 3) Male pattern baldness might be caused by increased peripheral sensitivity to androgens, since bald
24
25 men show an increase of androgen receptors in the scalp (34) and have higher serum levels of both
26
27 total and free testosterone (35). Free testosterone is converted to DHT by 5 α -reductase, leading to
28
29 miniaturization of hair follicles. It has been reported that 5 α -reductase exists in the blood vessels and
30
31 the heart, as does the DHT receptor, which is involved in vascular smooth muscle proliferation that
32
33 represents a fundamental feature of atherosclerosis along with the deposition of lipids (36).
34
35
36
37
38
39
40
41
42
43

44 *Strengths and limitations*

45
46 The strengths of the present meta-analysis were as follows. First, our analysis included several
47
48 large cohort and case-control studies, with a total of 36,990 subjects. Second, the cohort studies had
49
50 a long follow-up period (11.0-14.0 years). In all of the studies, analyses were adjusted for various
51
52 classical coronary risk factors, such as age, smoking, hypertension, dyslipidemia, and body mass
53
54
55
56
57
58
59
60

1
2
3
4
5
6 index.
7
8

9 However, the present meta-analysis also had several limitations. First, we only reviewed
10 English-language reports for inclusion in this meta-analysis and we might possibly have overlooked
11 some non-English literature, which could have led to selection bias. However, we also investigated
12 all of the references in each study as far as possible. Also, our analyses of publication bias did not
13 suggest that unpublished results had been missed, but these analyses might have been underpowered
14 due to the small effect sizes. Second, although most factors showed non-significant between-study
15 heterogeneity, it was significant for some factors, suggesting that differences of epidemiological
16 characteristics (e.g., the rate of severe baldness or CHD) or different diagnostic criteria (for baldness
17 and/or CHD) contributed to the heterogeneity to some extent.
18
19
20
21
22
23
24
25
26
27
28
29
30
31
32
33
34

35 Unlike the results of the other studies, the effect sizes reported by Lesko et al. (1993) (11) varied
36 widely and even changed the sign when different patterns of baldness were compared (Fig. 4). This
37 study had the lowest validity score (6/9 points on the Newcastle-Ottawa scale) among the six studies
38 included in our meta-analysis (**Supplementary Data 2**). Lesko et al. contacted the coronary care
39 units of participating hospitals to identify potential subjects with their first myocardial infarction and
40 to obtain permission to conduct an interview. Thus, details about CHD were not obtained in this
41 study, which might have led to bias and influenced the effect size.
42
43
44
45
46
47
48
49
50
51
52
53
54

55 Moreover, as already reported by Rebora (2001)(37), Lotufo et al. (2000)(10) relied on each
56
57
58
59
60

1
2
3
4
5
6 patient's memory of a condition that had developed up to 40 years before, which might have led to
7
8
9 recall bias. These two studies would have a higher risk of misclassification bias that could lead to
10
11
12 underestimating the strength of the association between baldness and CHD, since it is often
13
14
15 considered shameful to admit to the existence of baldness.

16
17
18 The third limitation was incomplete information about the use of medications such as anticoagulants,
19
20
21 anticonvulsants, beta-blockers, antidepressants, and hormone replacement therapy that might have
22
23
24 contributed to baldness (38).

25
26
27 Fourth, the methods used to assess baldness varied between studies, which meant that we could not
28
29
30 rule out other local causes of diffuse hair loss (alopecia areata or nonscarring alopecia), as well as
31
32
33 possible systemic causes (e.g., thyroiditis, iron deficiency (39,40), trauma, excessive dieting, or
34
35
36 debilitating diseases).

37
38
39 Even with such limitations, the present meta-analysis provided useful evidence regarding the
40
41
42 potential influence of baldness on CHD. Patients and physicians should consider the possibility that
43
44
45 baldness is associated with an increased risk of CHD.

46 47 48 49 **Conclusions**

50
51
52
53 In the present meta-analysis, vertex baldness was significantly associated with an increased risk of
54
55
56 CHD among younger men as well as among all subjects, and the association was dependent on the
57
58
59
60

1
2
3
4
5
6 severity of baldness. These findings suggest that vertex baldness is more closely associated with
7
8
9 systemic atherosclerosis than with frontal baldness. Thus, cardiovascular risk factors should be
10
11
12 reviewed carefully in men with vertex baldness, especially younger men, and they probably should
13
14
15 be encouraged to improve their cardiovascular risk profile. However, the usefulness of CHD
16
17
18 screening in asymptomatic populations is yet to be elucidated, so the screening method (e.g.,
19
20
21 exercise ECG, coronary computed tomography, or scintigraphy) employed should be practicable in
22
23
24 terms of its advantages/disadvantages and cost performance, and patients should be evaluated for
25
26
27 eligibility before screening to avoid possible over- medicalization since male pattern baldness affects
28
29
30 30-40% of adult men (5).

31
32 In addition, the association between baldness and CHD should be investigated in further studies,
33
34
35 including well-designed and controlled cohort studies, in order to confirm whether persons with
36
37
38 male pattern baldness (especially severe vertex baldness) have an increased risk of CHD.
39
40
41
42
43
44
45

46 ***Contributors***

47
48
49 TY, KH, HU and TK conceived the idea of the study and were responsible for the design of the study.

50
51
52 TY and KH were responsible for undertaking for the data analysis and produced the tables and
53
54
55 figures. TY and KH provided input into the data analysis. The initial draft of the manuscript was
56
57
58
59
60

1
2
3
4
5
6 prepared by TY and KH and then circulated repeatedly among all authors for critical revision. TY
7
8
9 was responsible for the acquisition of the data and TY, KH and TK contributed to the interpretation
10
11
12 of the results.
13

14 15 16 17 18 ***Copyright/license for publication*** 19

20 The Corresponding Author has the right to grant on behalf of all authors and does grant on behalf of
21
22
23 all authors, an exclusive license (or non-exclusive for government employees) on a worldwide basis
24
25
26 to the BMJ Publishing Group Ltd. and its Licensees to permit this article (if accepted) to be
27
28
29 published in BMJ editions and any other BMJ PGL products and sublicenses to exploit all subsidiary
30
31
32 rights, as set out in our license
33
34
35 (<http://resources.bmj.com/bmj/authors/checklists-forms/licence-for-publication>).
36
37

38 ***Competing Interests*** 39

40 All authors have completed the Unified Competing Interest form at
41
42
43 www.icmje.org/coi_disclosure.pdf (available on request from the corresponding author) and declare:
44
45
46 no support from any organisation for the submitted work; no financial relationships with any
47
48
49 organisations that might have an interest in the submitted work in the previous three years; no other
50
51
52 relationships or activities that could appear to have influenced the submitted work.
53
54

55 ***Ethical approval*** 56 57 58 59 60

1
2
3
4
5
6 Not needed.
7
8

9 ***Funding statement***

10
11 This research received no specific grant from any funding agency in the public, commercial or
12
13 not-for-profit sectors.
14
15
16
17
18
19
20
21
22

23 ***Supplementary Data***

24
25
26 **Supplementary Data 1. PRISMA Checklist.**
27
28

29 **Supplementary Data 2. Newcastle-Ottawa quality assessment scale for observational studies**
30
31
32
33
34
35
36
37
38
39
40
41
42
43
44
45
46
47
48
49
50
51
52
53
54
55
56
57
58
59
60

References

1. Lopez AD, Mathers CD, Ezzati M, *et al.* Global and regional burden of disease and risk factors, 2001: systematic analysis of population health data. *Lancet* 2006;367:1747-57.
2. Lerner DJ, Kannel WB. Patterns of coronary heart disease morbidity and mortality in the sexes: a 26-year follow-up of the Framingham population. *Am Heart J* 1986;111:383-90.
3. Young LH, Wackers FJ, Chyun DA, *et al.*; DIAD Investigators. Cardiac outcomes after screening for asymptomatic coronary artery disease in patients with type 2 diabetes: the DIAD study: a randomized controlled trial. *JAMA* 2009;301:1547-55.
4. McEvoy JW, Blaha MJ, Nasir K, *et al.* Impact of coronary computed tomographic angiography results on patient and physician behavior in a low-risk population. *Arch Intern Med* 2011;171:1260-8.
5. Olsen EA. Androgenetic alopecia. In: Olsen EA ed. *Disorders of Hair Growth: Diagnosis and Treatment*. New York, NY: McGraw-Hill; 1994:257-83.
6. Hamilton JB. Patterned loss of hair in man; types and incidence. *Ann N Y Acad Sci* 1951;53:708-28.
7. Price VH. Treatment of hair loss. *N Engl J Med* 1999;341:964-73.
8. Schnohr P, Lange P, Nyboe J, *et al.* Gray hair, baldness, and wrinkles in relation to myocardial infarction: the Copenhagen City Heart Study. *Am Heart J* 1995;130:1003-10.

- 1
2
3
4
5
6 9. Ford ES, Freedman DS, Byers T. Baldness and ischemic heart disease in a national sample of men.
7
8
9 Am J Epidemiol 1996;143:651-7.
10
11
12 10. Lotufo PA, Chae CU, Ajani UA, *et al.* Male pattern baldness and coronary heart disease: the
13
14 Physicians' Health Study. Arch Intern Med 2000;160:165-71.
15
16
17 11. Lesko SM, Rosenberg L, Shapiro S. A case-control study of baldness in relation to myocardial
18
19 infarction in men. JAMA 1993;269:998-1003.
20
21
22 12. Mirić D, Fabijanić D, Giunio L, *et al.* Dermatological indicators of coronary risk: a case-control
23
24 study. Int J Cardiol 1998;67:251-5.
25
26
27 13. Shahar E, Heiss G, Rosamond WD, *et al.* Baldness and myocardial infarction in men: the
28
29 atherosclerosis risk in communities study. Am J Epidemiol 2008;167:676-83.
30
31
32 14. von Elm E, Altman DG, Egger M, *et al.* The Strengthening the Reporting of Observational
33
34 Studies in Epidemiology (STROBE) statement: guidelines for reporting observational studies. J Clin
35
36 Epidemiol 2008;61:344-9.
37
38
39 15. Wells G, Shea B, O'Connell D, *et al.* The Newcastle-Ottawa Scale (NOS) for assessing the
40
41 quality of nonrandomised studies in meta-analyses [Internet]. Ottawa Hospital Research Institute.
42
43 Available from http://www.ohri.ca/programs/clinical_epidemiology/oxford.asp. Accessed 4
44
45
46
47
48
49
50
51
52
53
54
55
56
57
58
59
60

- 1
2
3
4
5
6 16. DerSimonian R, Laird N. Meta-analysis in clinical trials. *Control Clin Trials*.1986
7
8
9 Sep;7(3):177-88.
10
11
12 17. Higgins JP, Thompson SG. Quantifying heterogeneity in a meta-analysis. *Stat Med*
13
14
15 2002;21:1539-58.
16
17
18 18. Begg CB, Mazumdar M. Operating characteristics of a rank correlation test for publication bias.
19
20 *Biometrics*. 1994 Dec;50(4):1088-101.
21
22
23 19. Egger M, Davey Smith G, Schneider M, Minder C. Bias in meta-analysis detected by a simple,
24
25
26 graphical test. *BMJ*. 1997 Sep 13;315(7109):629-34
27
28
29 20. Stroup DF, Berlin JA, Morton SC, *et al*. Meta-analysis of observational studies in epidemiology:
30
31
32 a proposal for reporting. Meta-analysis Of Observational Studies in Epidemiology (MOOSE) group.
33
34
35 *JAMA* 2000;283:2008-12.
36
37
38 21. Liberati A, Altman DG, Tetzlaff J, *et al*. The PRISMA statement for reporting systematic reviews
39
40
41 and meta-analyses of studies that evaluate health care interventions: explanation and elaboration.
42
43
44 *Ann Intern Med* 2009;151:W65-94.
45
46
47 22. Norwood OT. Male pattern baldness: classification and incidence. *South Med J*
48
49
50 1975;68:1359-65.
51
52
53 23. Mumcuoglu C, Ekmekci TR, Ucak S. The investigation of insulin resistance and metabolic
54
55
56 syndrome in male patients with early-onset androgenetic alopecia. *Eur J Dermatol* 2011;21:79-82.
57
58
59
60

- 1
2
3
4
5
6 24. Matilainen V, Koskela P, Keinänen-Kiukaanniemi S. Early androgenetic alopecia as a marker of
7
8
9 insulin resistance. *Lancet* 2000;356:1165-6.
10
11
12 25. Hirso P, Rajala U, Hiltunen L, *et al.* Obesity and low-grade inflammation among young Finnish
13
14
15 men with early-onset alopecia. *Dermatology* 2007;214:125-9.
16
17
18 26. Matilainen VA, Mäkinen PK, Keinänen-Kiukaanniemi SM. Early onset of androgenetic alopecia
19
20
21 associated with early severe coronary heart disease: a population-based, case-control study. *J*
22
23
24 *Cardiovasc Risk*. 2001 Jun;8(3):147-51.
25
26
27 27. Messenger AG, Rundegren J. Minoxidil: mechanisms of action on hair growth. *Br J Dermatol*
28
29
30 2004;150:186-94.
31
32
33 28. Scow DT, Nolte RS, Shaughnessy AF. Medical treatments for balding in men. *Am Fam*
34
35
36 *Physician* 1999;59:2189-94.
37
38
39 29. Su LH, Chen TH. Association of androgenetic alopecia with metabolic syndrome in men: a
40
41
42 community-based survey. *Br J Dermatol* 2010;163:371-7.
43
44
45 30. Ahouansou S, Le Toumelin P, Crickx B, *et al.* Association of androgenetic alopecia and
46
47
48 hypertension. *Eur J Dermatol* 2007;17:220-2.
49
50
51 31. Arias-Santiago S, Gutiérrez-Salmerón MT, Castellote-Caballero L, *et al.* Male androgenetic
52
53
54 alopecia and cardiovascular risk factors: A case-control study. *Actas Dermosifilogr*
55
56
57 2010;101:248-56.
58
59
60

- 1
2
3
4
5
6 32. Yudkin JS, Stehouwer CD, Emeis JJ, *et al.* C-reactive protein in healthy subjects: associations
7
8 with obesity, insulin resistance, and endothelial dysfunction: a potential role for cytokines
9
10 originating from adipose tissue? *Arterioscler Thromb Vasc Biol* 1999;19:972-8.
11
12
13
14 33. Ridker PM. Clinical application of C-reactive protein for cardiovascular disease detection and
15
16 prevention. *Circulation* 2003;107:363-9.
17
18
19
20 34. Hibberts NA, Howell AE, Randall VA. Balding hair follicle dermal papilla cells contain higher
21
22 levels of androgen receptors than those from non-balding scalp. *J Endocrinol* 1998;156:59-65.
23
24
25 35. Demark-Wahnefried W, Lesko SM, Conaway MR, *et al.* Serum androgens: associations with
26
27 prostate cancer risk and hair patterning. *J Androl* 1997;18:495-500.
28
29
30
31 36. Fujimoto R, Morimoto I, Morita E, *et al.* Androgen receptors, 5 α -reductase activity and
32
33 androgen-dependent proliferation of vascular smooth muscle cells. *J Steroid Biochem Mol Biol*
34
35 1994;50:169-74.
36
37
38
39 37. Rebora A. Baldness and coronary artery disease: the dermatologic point of view of a
40
41 controversial issue. *Arch Dermatol* 2001;137:943-7.
42
43
44
45 38. Llau ME, Viraben R, Montastruc JL. [Drug-induced alopecia: review of the literature]. *Therapie*
46
47 1995;50:145-50.
48
49
50
51 39. Trost LB, Bergfeld WF, Calogeras E. The diagnosis and treatment of iron deficiency and its
52
53 potential relationship to hair loss. *J Am Acad Dermatol* 2006;54:824-44.
54
55
56
57
58
59
60

1
2
3
4
5
6
7
8
9
10
11
12
13
14
15
16
17
18
19
20
21
22
23
24
25
26
27
28
29
30
31
32
33
34
35
36
37
38
39
40
41
42
43
44
45
46
47
48
49
50
51
52
53
54
55
56
57
58
59
60

40. Olsen EA. Iron deficiency and hair loss: the jury is still out. J Am Acad Dermatol 2006;54:903-6.

For peer review only

1
2
3
4
5
6 **Figure legends**
7

8
9 **Figure 1. Flow diagram of study selection.**
10

11
12 **Figure 2. Association of baldness with CHD in the 3 cohort studies.**
13

14 The forest plot shows the association between male pattern baldness and the risk of coronary heart
15 disease (CHD). CI=confidence interval; RR=relative risk.
16
17
18

19
20
21 **Figure 3. Association of baldness with CHD in the 3 case-control studies.**
22

23 The forest plot shows the association between male pattern baldness and the risk of coronary heart
24 disease (CHD). CI=confidence interval; RR=relative risk.
25
26
27

28
29 **Figure 4. Association of baldness with CHD in studies using the modified Hamilton scale.**
30

31 The forest plot shows the association between male pattern baldness and the risk of coronary heart
32 disease (CHD). CI=confidence interval; RR=relative risk
33
34
35
36
37
38
39
40
41
42
43
44
45
46
47
48
49
50
51
52
53
54
55
56
57
58
59
60

1
2
3
4
5
6
7
8
9
10
11
12
13
14
15
16
17
18
19
20
21
22
23
24
25
26
27
28
29
30
31
32
33
34
35
36
37
38
39
40
41
42
43
44
45
46
47
48
49

First author,	Type of	Country	Subjects	CHD (events)	Assessment of baldness	Follow-up	Covariates used for adjustment
---------------	---------	---------	----------	--------------	------------------------	-----------	--------------------------------

For peer review only

Table 1. Summary of studies evaluating the association between baldness and coronary heart disease

year of publication	study					(years)	
Schnohr, 1995 (8)	Cohort	Denmark	5837	Myocardial infarction (750)	Simplified Hamilton (None, Frontoparietal, Crown-top, Combined)	12.0	Age, smoking, systolic blood pressure, cholesterol, triglycerides, physical activity, BMI, family history of MI, marital status, education, economic status, diabetes, and alcohol consumption
Ford, 1996 (9)	Cohort	USA	3994	Ischemic heart disease (965)	Personal scale (None, Minimum, Moderate, Severe)	14.0	Age, age squared, race, education, systolic blood pressure, antihypertensive medication, cholesterol, smoking, BMI, and diabetes mellitus
Lotufo, 2000 (10)	Cohort	USA	19112	Nonfatal MI, angina, coronary revascularization (1446)	Modified Hamilton (None, Frontal, Mild vertex, Moderate vertex, Severe vertex)	11.0	Age, aspirin assignment, beta carotene assignment, BMI, height (cm), hypertension, hypercholesterolemia, diabetes, parental history of MI, physical activity, smoking, and alcohol use.

1
2
3
4
5
6
7
8
9
10
11
12
13
14
15
16
17
18
19
20
21
22
23
24
25
26
27
28
29
30
31
32
33
34
35
36
37
38
39
40
41
42
43
44
45
46
47
48
49

Lesko,	Case-	USA	1437	Non-fatal	Modified Hamilton (None,	-	Age, race, religion, years of education, BMI, use of
1993 (11)	control			Myocardial	Frontal only, Mild vertex,		alcohol and cigarettes, family history of myocardial
				infarction (665)	Moderate vertex, Severe vertex)		infarction, personal history of angina, hypertension,
							diabetes, hypercholesterolemia, gout, exercise,
							personality, and number of doctor visits in the past year.
Miric,	Case-	Croatia	1554	Non-fatal	Personal score (None, Any,	-	Age, family history of MI, hypertension,
1998 (12)	control			Myocardial	Frontal, Parietal, Fronto-parietal)		hypercholesterolemia, BMI, diabetes, and smoking.
				infarction (842)			
Shahar,	Case-	USA	5056	Non-fatal	Modified Hamilton (None,	-	Age, smoking, BMI, race-center, cholesterol-lowering
2008 (13)	control			Myocardial	Frontal, Mild vertex, Moderate		medication, antihypertensive medication, HDL,
				infarction (767)	vertex, Severe vertex)		diabetes, educational level, and family history of MI.

CHD, coronary heart disease; BMI, body mass index; MI, myocardial infarction; AGA, androgenic alopecia; HDL, high density lipoprotein;

1
2
3
4
5
6
7
8
9
10
11
12
13
14
15
16
17
18
19
20
21
22
23
24
25
26
27
28
29
30
31
32
33
34
35
36
37
38
39
40
41
42
43
44
45
46
47
48
49

For peer review only

Male Pattern Baldness and Its Association with Coronary Heart Disease: A Meta-Analysis

Tomohide Yamada, MD

Kazuo Hara, MD, PhD*

Hitomi Umematsu, MD

Takashi Kadowaki, MD, PhD

Department of Diabetes and Metabolic Diseases, Graduate School of Medicine

University of Tokyo, Japan

* Corresponding author

7-3-1 Hongo, Bunkyo, Tokyo 113-8655, Japan

Tel.: +81-3-5800-8818; Fax: +81-3-5689-7209

E-mail address: haratky@gmail.com

Brief title: Male pattern baldness and CHD

Word count: 3691 words

1
2
3
4
5
6 **Abstract**
7

8
9 **Objective:**

10
11 To confirm the association between male pattern baldness and coronary heart disease (CHD).
12
13

14
15 **Design:**

16
17 Meta-analysis of observational studies.
18
19

20
21 **Data sources:**

22
23 Medline and the Cochrane Library were searched for articles published up to November 2012 using
24
25 keywords that included both 'baldness' and 'coronary heart disease' and the reference lists of those
26
27 studies identified were also searched.
28
29
30

31
32 **Study selection:**

33
34 Observational studies were identified that reported risk estimates for CHD related to baldness. Two
35
36 observers independently assessed eligibility, extracted data, and assessed the possibility of bias.
37
38
39

40
41 **Data synthesis:**

42
43 The adjusted relative risk (RR) and 95% confidence interval (95%CI) were estimated using the
44
45 DerSimonian-Laird random-effect model.
46
47
48

49
50 **Results:**

51
52 Included 850 possible studies, three cohort studies and three case-control studies were selected
53
54
55 (36,990 subjects).
56
57
58
59
60

1
2
3
4
5
6 In the cohort studies, the adjusted RR of men with severe baldness for CHD was 1.32 (95%CI: 1.08 -
7
8
9 1.63, $P = 0.008$, $I^2 = 25\%$) versus those without baldness. Analysis of younger men (<55 or ≤60
10
11
12 years) showed a similar association of CHD with severe baldness (RR: 1.44, 95%CI: 1.11 - 1.86, $P =$
13
14 0.006, $I^2 = 0\%$).

15
16
17 In 3 studies employing the modified Hamilton scale, vertex baldness was associated with CHD and
18
19
20 the relation depended on the severity of baldness (severe vertex: RR 1.48 (1.04 - 2.11, $P = 0.03$);
21
22
23 moderate vertex: RR 1.36 (1.16 - 1.58, $P < 0.001$); mild vertex: RR 1.18 (1.04 - 1.35, $P < 0.001$).
24
25
26 However, frontal baldness was not associated with CHD (RR 1.11 (0.92 - 1.32, $P = 0.28$)).
27
28

29 **Conclusion:**

30
31
32 Vertex baldness, but not frontal baldness, is associated with an increased risk of CHD. The
33
34
35 association with CHD depends on the severity of vertex baldness and also exists among younger
36
37
38 men. Thus, vertex baldness might be more closely related to atherosclerosis than frontal baldness,
39
40
41 but the association between male pattern baldness and CHD deserves further investigation.
42
43
44
45

46
47 **Key words:** male pattern baldness, androgenetic alopecia, coronary heart disease, cardiovascular
48
49
50 disease, relative risk, meta-analysis
51
52
53
54
55
56
57
58
59
60

1
2
3
4
5
6 **Article summary**
7

8
9 **Article focus:**

10
11 • The present meta-analysis aimed to confirm the association of male pattern baldness (androgenetic
12 alopecia) with an increased risk of coronary heart disease (CHD).
13
14

15
16
17 **Key messages:**

18
19
20 • Meta-analysis of 6 observational studies with a total of 36,690 subjects showed that vertex baldness
21 is associated with an increased risk of CHD and that the relationship depends upon the severity of
22 baldness, while frontal baldness is not.
23
24

25
26 • Thus, vertex baldness might be a marker of CHD and is more closely associated with systemic
27 atherosclerosis than frontal baldness.
28

29
30 • This potential relationship should be investigated in further studies, including well-designed
31 prospective studies.
32
33

34
35
36
37
38
39
40
41 **Strengths and limitations of this study:**

42
43 • This was the first meta-analysis of the association between baldness and CHD; it showed that the
44 relationship depends on the severity of baldness.
45
46

47
48 • The cohort studies had a long follow-up period of 11.0 - 14.0 years.
49

50
51 • A weakness might be the small number of studies analyzed.
52
53
54
55
56
57
58
59
60

Introduction

Coronary heart disease (CHD) is a major cause of death and disability worldwide (1). Advanced obstructive CHD can exist in patients with minimal or no symptoms and can progress rapidly (2), so early detection is extremely important. Many clinicians carry out screening for asymptomatic CHD and participants in wellbeing programs often also request such screening, but the usefulness of CHD screening has yet to be confirmed. Young et al. (2009) reported that the incidence of CHD was not significantly reduced in asymptomatic diabetic patients when screening was conducted by myocardial scintigraphy (3), and McEvoy et al. (2011) also reported that coronary computed tomography screening of asymptomatic patients without a history of coronary artery disease fails to prevent major cardiovascular events (4).

Male pattern baldness, also called androgenetic alopecia (AGA), is the most common cause of hair loss. It affects approximately 30 to 40% of adult men (5) and it is seen in 80% of men by the age of 80 years (6). AGA is considered to be a heritable, androgen-dependent condition that is characterized by varying degrees of thinning/hair loss primarily at the vertex and the frontal areas (temples) of the scalp. In men with AGA, the thin residual hairs tend to be of various lengths and diameters since each follicle is in a different phase of the hair cycle, so the presence of variations in hair length and texture is a classic feature of this thinning condition (7).

Several recent studies have shown that baldness is associated with the risk of CHD (8-12). These

1
2
3
4
5
6 studies have generally found a positive association between baldness and CHD, although the
7
8
9 strength of the association has varied (8-13).

10
11 Clarifying the relationship between baldness and CHD could lead to more effective approaches to
12
13 the early detection of heart disease, since it might permit the reliable identification of persons with
14
15 an increased risk of suffering from a cardiac event thereby allowing the delivery of appropriate
16
17 therapy (e.g., antihypertensive or lipid-lowering therapy) to improve the prognosis of such high-risk
18
19 persons. Accordingly, we performed a meta-analysis to further assess the influence of male pattern
20
21 baldness (AGA) on CHD.
22
23
24
25
26
27
28
29
30
31

32 **Methods**

33 *Search strategy*

34
35
36
37 The Medline and Cochrane Library electronic databases were searched from January 1, 1950 until
38
39 November 27, 2012 using the medical subject headings “Baldness” (“baldness” or “hair loss” or
40
41 “alopecia”) and “Coronary heart disease” (“coronary heart disease” or “cardiovascular disease” or
42
43 “coronary artery disease”) to identify observational studies that estimated the association between
44
45 baldness and CHD. The reference lists of all studies identified were also reviewed.
46
47
48
49
50
51

52 *Study selection*

1
2
3
4
5
6 We performed initial screening based on the study titles or abstracts, while the second screening
7
8
9 involved a full-text review. Cohort studies, case-control studies, and cross-sectional studies that
10
11
12 assessed the association between male pattern baldness and CHD were eligible for inclusion if the
13
14
15 following criteria were met: 1) the full text of the report was published in English, 2) the relative risk
16
17
18 (risk ratio, hazard ratio, or odds ratio) was reported with adjustment for possible covariates (e.g. age,
19
20
21 smoking, family history of baldness, or family history of CHD), 3) the presence and severity of male
22
23
24 pattern baldness was reported, and 4) CHD events were reported.
25
26
27
28

29 *Definitions of baldness and CHD*

30
31
32 Baldness was defined according to the description in the history and/or on the basis of terms such
33
34
35 as AGA and male pattern hair loss. We excluded studies that analyzed men with other types of
36
37
38 baldness (e.g., alopecia areata or scarring alopecia). CHD was defined as including all of the
39
40
41 following: coronary artery disease, myocardial infarction, angina pectoris, cardiomyopathy, and
42
43
44 other types of ischemic heart disease.
45
46
47
48

49 *Assessment of validity*

50
51
52 To ascertain the validity of the eligible studies, the quality of each report was appraised with
53
54
55 reference to the STROBE statement (14). Moreover, the Newcastle-Ottawa Scale for assessing
56
57
58
59
60

1
2
3
4
5
6 quality of non-randomized studies in meta-analyses was used to quantify the validity of each study
7
8
9 (15).

10 11 12 13 14 15 **Data extraction**

16
17 Two investigators (T.Y. and K.H.) independently reviewed each study to determine its eligibility,
18
19 and then extracted and tabulated all of the relevant data. Disagreement was resolved by consensus
20
21 between the two investigators.
22
23

24
25 The following information was obtained from each study: first author, year of publication, type of
26
27 study, country where the study was conducted, number of subjects (all subjects who participated in
28
29 the study), CHD events, method of assessing baldness, follow-up period, mean age, smoking,
30
31 covariates used for adjustment during analysis, and severity of baldness.
32
33
34
35
36
37
38
39
40

41 **Statistical analysis**

42
43 The pooled relative risk (RR) adjusted for possible covariates and its 95% confidence interval
44
45 (95%CI) were calculated for the risk of CHD events in each study by the DerSimonian-Laird
46
47 random effect model weighted with inverse variance (16). Equivalence of RRs between the cohort
48
49 studies and the cross-sectional studies was assessed by the z-statistic test. Cochrane's χ^2 test and the
50
51 I^2 test were used to evaluate heterogeneity among studies (17). Possible publication bias was
52
53
54
55
56
57
58
59
60

1
2
3
4
5
6 evaluated by creating a funnel plot of the effect size for each study versus the standard error (SE).
7
8
9 Funnel plot asymmetry was assessed by the Begg (18) and Egger tests (19). All statistical analyses
10
11
12 were performed with Stata 12.0 software (StataCorp, College Station, TX). Results are expressed as
13
14 the mean with 95%CI, unless otherwise indicated. A P value of less than 0.05 was considered
15
16 significant. All procedures were performed in accordance with the guideline published by the
17
18 Meta-analysis Of Observational Studies in Epidemiology (MOOSE) group (20) and the PRISMA
19
20
21 statement (21)(Supplementary Data 1).
22
23
24
25
26
27
28

29 Results

30 Literature search

31
32
33
34
35 **Figure 1** shows a flow chart of the study selection process. We identified a total of 850 reports by
36
37 searching the databases. Among these, 834 reports were excluded after review of the title and
38
39 abstract, leaving 16 studies for further evaluation. Ten of these 16 studies were excluded after full
40
41 text evaluation, chiefly because of the lack of pertinent data. The remaining 6 studies (8-13) fulfilled
42
43
44 the inclusion criteria were used for the present meta-analysis.
45
46
47
48
49
50
51
52

53 Study characteristics

54
55 The six studies that were selected included three cohort studies and three case-control studies, and
56
57
58
59
60

1
2
3
4
5
6 their characteristics are summarized in **Table 1**. There were moderate differences with respect to the
7
8
9 country, number of subjects, and method of assessing baldness. The studies were published between
10
11
12 1993 and 2008. Four studies (9-11,13) were conducted in the USA and the other two (8,12) were
13
14
15 conducted in the European Union. The size of the study populations ranged from 1,437 (11) to
16
17
18 19,112 (10) subjects (mean: 6,165 subjects). In five of the six studies (8,10-13), CHD was defined as
19
20
21 non-fatal myocardial infarction. The mean follow-up period ranged from 11 to 14 years. The method
22
23
24 of assessing baldness varied, with a modified or simplified Hamilton scale being employed in four
25
26
27 studies (8,10,11,13) and a personal scale being used in the other two studies (9,12).

28
29
30 Three studies (10,11,13) used a modified Hamilton scale that reduced the 12 categories of the
31
32
33 original scale to the following five categories: no baldness (I, II); frontal baldness alone (IIa, III, IIIa,
34
35
36 IVa); mild vertex baldness (III vertex, IV); moderate vertex baldness (V, Va); and severe vertex
37
38
39 baldness (VI, VII). One study (8) used a simplified Hamilton scale, in which the extent of baldness
40
41
42 was classified as follows: none; frontoparietal region (no bald triangle but >3 cm in front of the ear,
43
44
45 or bald triangle but ≤3 cm in front of the ear); crown-top region (thick hair, partly thin hair, bald spot,
46
47
48 or bald top and front); and combined.

49
50
51 Among the two studies that employed personal scales, Ford et al. (1996) classified baldness as
52
53
54 none, minimum, moderate, or severe (9). Minimum baldness corresponded to no obvious baldness
55
56
57 when the participant walked into the examining room, while moderate baldness was observable
58
59
60

1
2
3
4
5
6 baldness at the first encounter and severe baldness was obvious at the first encounter. In the other
7
8
9 study, Miric et al. (1998) classified baldness as none, frontal, parietal (vertex), or combined (12).

10
11 The RR for CHD of the subjects with baldness was adjusted for several coronary risk factors (age,
12
13 smoking, diabetes, etc.) in each study, but the number of variables differed significantly among the
14
15
16
17 studies.

18
19
20 The reports on all three cross-sectional studies (11-13) explicitly mentioned the limitations of a
21
22 cross-sectional design (i.e., it cannot assess causality), the possible biases of each study, and the
23
24 influence of covariates. The reports on all three cohort studies (8-10) mentioned the possibility of
25
26
27
28 misclassification of the severity of baldness.

29
30
31
32 One study found that baldness was not associated with CHD (13), but the other five studies
33
34
35 concluded that baldness was associated with a significantly increased risk of CHD, although the
36
37
38 strength of the association varied.

39
40
41 According to the Newcastle-Ottawa quality assessment scale for observational studies, all of the
42
43
44 studies used in the present meta-analysis achieved at least six out of nine points, indicating that the
45
46
47 overall quality of the studies was good (**Supplementary Data 2**).

48 49 50 51 52 *Association of baldness with CHD*

53
54
55 Among the six studies with a total of 36,990 subjects that were selected (8-13), no study showed a
56
57
58
59
60

1
2
3
4
5
6 significant decrease in the risk of CHD for men with baldness.
7

8
9 **Figures 2-4** show the results obtained by combining the RRs for CHD with the random-effect
10
11 model.
12

13
14 In the three cohort studies (8-10), the adjusted RR of CHD for men of all ages with severe baldness
15 versus those without baldness was 1.32 (95%CI: 1.08 - 1.63; $P = 0.008$; P for heterogeneity = 0.26; I^2
16 = 25%) with non-significant heterogeneity. Analysis restricted to younger subjects (<55 years old
17 or ≤60 years old at baseline) revealed a similar association of severe baldness with CHD (RR 1.44
18 (95%CI: 1.11 - 1.86; $P = 0.006$; P for heterogeneity = 0.59; $I^2 = 0\%$)) with non-significant
19 heterogeneity (Figure 2).
20
21
22
23
24
25
26
27
28
29
30

31
32 In the three case-control studies (11-13), the adjusted RR was 1.70 (95%CI: 1.05 - 2.74; $P = 0.03$; P
33
34 for heterogeneity = 0.01; $I^2 = 78\%$) for all subjects, while the RR was 1.84 (95%CI: 1.30 - 2.62; $P =$
35
36 0.001; P for heterogeneity = 0.17; $I^2 = 44\%$) among the younger subjects (**Figure 3**). The difference
37
38 of RR values between the cohort and case-control studies was non-significant (all subjects: $P = 0.15$;
39
40
41
42
43
44 patients ≤60 years old: $P = 0.07$).
45
46
47
48

49 ***Stratified analysis***

50
51
52 In the three studies that assessed the severity of baldness by using the modified Hamilton scale
53
54
55 (10,11,13), two studies (10,11) showed that vertex baldness was associated with CHD and that this
56
57
58
59
60

1
2
3
4
5
6 association was dependent on the severity of baldness. In subjects with severe vertex baldness, the
7
8
9 RR was 1.48 (95%CI: 1.04 - 2.11; $P = 0.03$; P for heterogeneity = 0.02; $I^2 = 75\%$), while the RR was
10
11
12 1.36 (95%CI: 1.16 - 1.58; $P < 0.001$; P for heterogeneity = 0.95; $I^2 = 0\%$) for moderate vertex
13
14
15 baldness and 1.18 (95%CI: 1.04 - 1.35; $P < 0.001$; P for heterogeneity = 0.35; $I^2 = 4\%$) for mild
16
17
18 vertex baldness. In contrast, there was non-significant association of frontal baldness with CHD and
19
20
21 the RR was only 1.11 (95%CI: 0.92 - 1.32; $P = 0.28$; P for heterogeneity=0.24; $I^2 = 30\%$) (**Figure**
22
23
24 **4**).

25
26 Because the method of assessing baldness was not homogenous, we also performed a sensitivity
27
28
29 analysis of the studies that used personal scales to classify baldness into four grades (none, frontal,
30
31
32 crown-top, or combined) (8,12). Similar results were obtained showing that the association with
33
34
35 CHD depended on the severity of baldness, with an RR of 1.69 (95%CI: 1.28 - 2.23; $P < 0.001$; P
36
37
38 for heterogeneity = 0.97; $I^2 = 0\%$) for combined baldness, an RR of 1.52 (95%CI: 0.97- 2.39; $P =$
39
40
41 0.07; P for heterogeneity = 0.001; $I^2 = 91\%$) for crown-top baldness, and an RR of 1.22 (95%CI:
42
43
44 0.70 - 2.14; $P = 0.49$; P for heterogeneity = 0.05; $I^2 = 73\%$) for frontal baldness.
45
46
47
48

49 ***Publication bias***

50
51
52 The funnel plot, Begg's test, and Egger's test were used to evaluate the potential influence of
53
54
55 publication bias on the association between baldness and CHD. The funnel plot did not show an
56
57
58
59
60

1
2
3
4
5
6 asymmetric pattern, while Egger's test and Begg's test revealed non-significant publication bias (all
7
8
9 $P \geq 0.05$).

10 11 12 13 14 15 **Discussion**

16
17
18 The present meta-analysis of six studies from the USA and Europe demonstrated that vertex
19
20 baldness was significantly associated with an increased risk of CHD among subjects of all ages and
21
22 also among younger men. Interestingly, frontal baldness was non-significantly associated with CHD.
23
24

25
26 When baldness was classified by the Hamilton-Norwood scale, which is the most commonly used
27
28 classification of male pattern baldness worldwide (22), the relationship between CHD and baldness
29
30 was shown to be dependent on the severity of baldness.
31
32

33
34
35 Our meta-analysis of young men alone also showed a significant relationship between androgenetic
36
37 alopecia (AGA) and the risk of CHD like that revealed by the meta-analysis of men of all ages (Figs.
38
39 2,3). The results were consistent with those of many studies published so far, which have shown that
40
41 early onset of AGA is related to a risk of early severe CHD and its risk factors (23-26).
42
43
44

45
46 These findings support the hypothesis that vertex baldness is a local manifestation of factors
47
48 promoting systemic atherosclerosis, such as metabolic syndrome, hypertension, and smoking.
49
50

51
52 Minoxidil (Rogaine/Regaine) is one of the most popular drugs for the treatment of male pattern
53
54 baldness. Minoxidil was originally developed as an antihypertensive agent (vasodilator) and it is
55
56
57
58
59
60

1
2
3
4
5
6 thought to improve the blood flow and the supply of oxygen and nutrients to the hair follicles by
7
8
9 dilating vessels in the scalp and opening potassium channels. This might lead to the shedding of
10
11
12 hairs in the telogen phase, which are then replaced by thicker hairs in the anagen phase (27).

13
14 Minoxidil is only indicated for vertex baldness and is ineffective for frontal baldness (28), which
15
16
17 supports our finding that vertex baldness is more closely related to atherosclerosis than frontal
18
19
20 baldness.
21
22

23 24 25 26 *Mechanism of the relation between baldness and CHD* 27

28
29 The reason for the association between baldness and CHD is unclear. It has been suggested that
30
31
32 classical coronary risk factors (e.g., age, hypertension, dislipidemia, and smoking) might influence
33
34
35 both conditions, so that baldness is a marker of atherosclerosis. In fact, previous studies have
36
37
38 demonstrated a positive association between male pattern baldness and insulin resistance (23),
39
40
41 metabolic syndrome (29), and hypertension (30). It has also been postulated that baldness is linked
42
43
44 to CHD by mechanisms such as hyperinsulinemia, chronic inflammation, and increased peripheral
45
46
47 sensitivity to androgens, and these are briefly discussed below.

48
49 1) Hyperinsulinemia/insulin resistance is the central factor in metabolic syndrome and it promotes
50
51
52 intolerance of carbohydrates and the development of central (abdominal) obesity. Insulin resistance
53
54
55 has also been shown to cause vasoconstriction and impairs the supply of nutrients to the hair follicles
56
57
58
59
60

1
2
3
4
5
6 of the scalp, as well as enhancing the influence of dihydro-testosterone (DHT) on follicular
7
8
9 miniaturization (24,31).

10
11 2) A proinflammatory state could increase the levels of inflammatory cytokines in the arterial walls
12
13 (32) and hair follicles (25). High-sensitivity C-reactive protein is a marker of inflammation and is
14
15 also a good predictor of future cardiovascular disease (33), so chronic inflammation could be related
16
17 to both CHD and baldness.
18
19

20
21 3) Male pattern baldness might be caused by increased peripheral sensitivity to androgens, since bald
22
23 men show an increase of androgen receptors in the scalp (34) and have higher serum levels of both
24
25 total and free testosterone (35). Free testosterone is converted to DHT by 5 α -reductase, leading to
26
27 miniaturization of hair follicles. It has been reported that 5 α -reductase exists in the blood vessels and
28
29 the heart, as does the DHT receptor, which is involved in vascular smooth muscle proliferation that
30
31 represents a fundamental feature of atherosclerosis along with the deposition of lipids (36).
32
33
34
35
36
37
38
39
40
41
42

43 ***Strengths and limitations***

44
45
46 The strengths of the present meta-analysis were as follows. First, our analysis included several
47
48 large cohort and case-control studies, with a total of 36,990 subjects. Second, the cohort studies had
49
50 a long follow-up period (11.0-14.0 years). In all of the studies, analyses were adjusted for various
51
52 classical coronary risk factors, such as age, smoking, hypertension, dyslipidemia, and body mass
53
54
55
56
57
58
59
60

1
2
3
4
5
6 index.

7
8
9 However, the present meta-analysis also had several limitations. First, we only reviewed
10 English-language reports for inclusion in this meta-analysis and we might possibly have overlooked
11 some non-English literature, which could have led to selection bias. However, we also investigated
12 all of the references in each study as far as possible. Also, our analyses of publication bias did not
13 suggest that unpublished results had been missed, but these analyses might have been underpowered
14 due to the small effect sizes. Second, although most factors showed non-significant between-study
15 heterogeneity, it was significant for some factors, suggesting that differences of epidemiological
16 characteristics (e.g., the rate of severe baldness or CHD) or different diagnostic criteria (for baldness
17 and/or CHD) contributed to the heterogeneity to some extent.

18
19 Unlike the results of the other studies, the effect sizes reported by Lesko et al. (1993) (11) varied
20 widely and even changed the sign when different patterns of baldness were compared (Fig. 4). This
21 study had the lowest validity score (6/9 points on the Newcastle-Ottawa scale) among the six studies
22 included in our meta-analysis (**Supplementary Data 2**). Lesko et al. contacted the coronary care
23 units of participating hospitals to identify potential subjects with their first myocardial infarction and
24 to obtain permission to conduct an interview. Thus, details about CHD were not obtained in this
25 study, which might have led to bias and influenced the effect size.

26
27 Moreover, as already reported by Rebora (2001)(37), Lotufo et al. (2000)(10) relied on each

1
2
3
4
5
6 patient's memory of a condition that had developed up to 40 years before, which might have led to
7
8
9 recall bias. These two studies would have a higher risk of misclassification bias that could lead to
10
11
12 underestimating the strength of the association between baldness and CHD, since it is often
13
14
15 considered shameful to admit to the existence of baldness.

16
17
18 The third limitation was incomplete information about the use of medications such as anticoagulants,
19
20
21 anticonvulsants, beta-blockers, antidepressants, and hormone replacement therapy that might have
22
23
24 contributed to baldness (38).

25
26
27 Fourth, the methods used to assess baldness varied between studies, which meant that we could not
28
29
30 rule out other local causes of diffuse hair loss (alopecia areata or nonscarring alopecia), as well as
31
32
33 possible systemic causes (e.g., thyroiditis, iron deficiency (39,40), trauma, excessive dieting, or
34
35
36 debilitating diseases).

37
38
39 Even with such limitations, the present meta-analysis provided useful evidence regarding the
40
41
42 potential influence of baldness on CHD. Patients and physicians should consider the possibility that
43
44
45 baldness is associated with an increased risk of CHD.

46 47 48 49 ***Conclusions***

50
51
52 In the present meta-analysis, vertex baldness was significantly associated with an increased risk of
53
54
55 CHD among younger men as well as among all subjects, and the association was dependent on the
56
57
58
59
60

1
2
3
4
5
6 severity of baldness. These findings suggest that vertex baldness is more closely associated with
7
8
9 systemic atherosclerosis than with frontal baldness. Thus, cardiovascular risk factors should be
10
11
12 reviewed carefully in men with vertex baldness, especially younger men, and they probably should
13
14
15 be encouraged to improve their cardiovascular risk profile. However, the usefulness of CHD
16
17
18 screening in asymptomatic populations is yet to be elucidated, so the screening method (e.g.,
19
20
21 exercise ECG, coronary computed tomography, or scintigraphy) employed should be practicable in
22
23
24 terms of its advantages/disadvantages and cost performance, and patients should be evaluated for
25
26
27 eligibility before screening to avoid possible over- medicalization since male pattern baldness affects
28
29
30 30-40% of adult men (5).

31
32 In addition, the association between baldness and CHD should be investigated in further studies,
33
34
35 including well-designed and controlled cohort studies, in order to confirm whether persons with
36
37
38 male pattern baldness (especially severe vertex baldness) have an increased risk of CHD.
39
40
41
42
43
44
45

46 ***Contributors***

47
48
49 TY, KH, HU and TK conceived the idea of the study and were responsible for the design of the study.

50
51
52 TY and KH were responsible for undertaking for the data analysis and produced the tables and
53
54
55 figures. TY and KH provided input into the data analysis. The initial draft of the manuscript was
56
57
58
59
60

1
2
3
4
5
6 prepared by TY and KH and then circulated repeatedly among all authors for critical revision. TY
7
8
9 was responsible for the acquisition of the data and TY, KH and TK contributed to the interpretation
10
11
12 of the results.
13

14 15 16 17 18 ***Copyright/license for publication*** 19

20 The Corresponding Author has the right to grant on behalf of all authors and does grant on behalf of
21
22
23 all authors, an exclusive license (or non-exclusive for government employees) on a worldwide basis
24
25
26 to the BMJ Publishing Group Ltd. and its Licensees to permit this article (if accepted) to be
27
28
29 published in BMJ editions and any other BMJ PGL products and sublicenses to exploit all subsidiary
30
31
32 rights, as set out in our license
33
34
35 (<http://resources.bmj.com/bmj/authors/checklists-forms/licence-for-publication>).
36
37

38 ***Competing Interests*** 39

40 All authors have completed the Unified Competing Interest form at
41
42
43 www.icmje.org/coi_disclosure.pdf (available on request from the corresponding author) and declare:
44
45
46 no support from any organisation for the submitted work; no financial relationships with any
47
48
49 organisations that might have an interest in the submitted work in the previous three years; no other
50
51
52 relationships or activities that could appear to have influenced the submitted work.
53
54

55 ***Ethical approval*** 56 57 58 59 60

1
2
3
4
5
6
7
8
9
10
11
12
13
14
15
16
17
18
19
20
21
22
23
24
25
26
27
28
29
30
31
32
33
34
35
36
37
38
39
40
41
42
43
44
45
46
47
48
49
50
51
52
53
54
55
56
57
58
59
60

Not needed.

Funding statement

This research received no specific grant from any funding agency in the public, commercial or not-for-profit sectors.

Supplementary Data

Supplementary Data 1. PRISMA Checklist.

Supplementary Data 2. Newcastle-Ottawa quality assessment scale for observational studies

For peer review only

References

1. Lopez AD, Mathers CD, Ezzati M, *et al.* Global and regional burden of disease and risk factors, 2001: systematic analysis of population health data. *Lancet* 2006;367:1747-57.
2. Lerner DJ, Kannel WB. Patterns of coronary heart disease morbidity and mortality in the sexes: a 26-year follow-up of the Framingham population. *Am Heart J* 1986;111:383-90.
3. Young LH, Wackers FJ, Chyun DA, *et al.*; DIAD Investigators. Cardiac outcomes after screening for asymptomatic coronary artery disease in patients with type 2 diabetes: the DIAD study: a randomized controlled trial. *JAMA* 2009;301:1547-55.
4. McEvoy JW, Blaha MJ, Nasir K, *et al.* Impact of coronary computed tomographic angiography results on patient and physician behavior in a low-risk population. *Arch Intern Med* 2011;171:1260-8.
5. Olsen EA. Androgenetic alopecia. In: Olsen EA ed. *Disorders of Hair Growth: Diagnosis and Treatment*. New York, NY: McGraw-Hill; 1994:257-83.
6. Hamilton JB. Patterned loss of hair in man; types and incidence. *Ann N Y Acad Sci* 1951;53:708-28.
7. Price VH. Treatment of hair loss. *N Engl J Med* 1999;341:964-73.
8. Schnohr P, Lange P, Nyboe J, *et al.* Gray hair, baldness, and wrinkles in relation to myocardial infarction: the Copenhagen City Heart Study. *Am Heart J* 1995;130:1003-10.

- 1
2
3
4
5
6 9. Ford ES, Freedman DS, Byers T. Baldness and ischemic heart disease in a national sample of men.
7
8
9 Am J Epidemiol 1996;143:651-7.
10
11
12 10. Lotufo PA, Chae CU, Ajani UA, *et al.* Male pattern baldness and coronary heart disease: the
13
14 Physicians' Health Study. Arch Intern Med 2000;160:165-71.
15
16
17 11. Lesko SM, Rosenberg L, Shapiro S. A case-control study of baldness in relation to myocardial
18
19 infarction in men. JAMA 1993;269:998-1003.
20
21
22 12. Mirić D, Fabijanić D, Giunio L, *et al.* Dermatological indicators of coronary risk: a case-control
23
24 study. Int J Cardiol 1998;67:251-5.
25
26
27 13. Shahar E, Heiss G, Rosamond WD, *et al.* Baldness and myocardial infarction in men: the
28
29 atherosclerosis risk in communities study. Am J Epidemiol 2008;167:676-83.
30
31
32 14. von Elm E, Altman DG, Egger M, *et al.* The Strengthening the Reporting of Observational
33
34 Studies in Epidemiology (STROBE) statement: guidelines for reporting observational studies. J Clin
35
36 Epidemiol 2008;61:344-9.
37
38
39 15. Wells G, Shea B, O'Connell D, *et al.* The Newcastle-Ottawa Scale (NOS) for assessing the
40
41 quality of nonrandomised studies in meta-analyses [Internet]. Ottawa Hospital Research Institute.
42
43 Available from http://www.ohri.ca/programs/clinical_epidemiology/oxford.asp. Accessed 4
44
45
46
47
48
49
50
51
52
53
54
55
56
57
58
59
60

- 1
2
3
4
5
6 16. DerSimonian R, Laird N. Meta-analysis in clinical trials. *Control Clin Trials*.1986
7
8
9 Sep;7(3):177-88.
10
11
12 17. Higgins JP, Thompson SG. Quantifying heterogeneity in a meta-analysis. *Stat Med*
13
14
15 2002;21:1539-58.
16
17
18 18. Begg CB, Mazumdar M. Operating characteristics of a rank correlation test for publication bias.
19
20
21 *Biometrics*. 1994 Dec;50(4):1088-101.
22
23
24 19. Egger M, Davey Smith G, Schneider M, Minder C. Bias in meta-analysis detected by a simple,
25
26
27 graphical test. *BMJ*. 1997 Sep 13;315(7109):629-34
28
29
30 20. Stroup DF, Berlin JA, Morton SC, *et al*. Meta-analysis of observational studies in epidemiology:
31
32 a proposal for reporting. Meta-analysis Of Observational Studies in Epidemiology (MOOSE) group.
33
34
35 *JAMA* 2000;283:2008-12.
36
37
38 21. Liberati A, Altman DG, Tetzlaff J, *et al*. The PRISMA statement for reporting systematic reviews
39
40
41 and meta-analyses of studies that evaluate health care interventions: explanation and elaboration.
42
43
44 *Ann Intern Med* 2009;151:W65-94.
45
46
47 22. Norwood OT. Male pattern baldness: classification and incidence. *South Med J*
48
49
50 1975;68:1359-65.
51
52
53 23. Mumcuoglu C, Ekmekci TR, Ucak S. The investigation of insulin resistance and metabolic
54
55
56 syndrome in male patients with early-onset androgenetic alopecia. *Eur J Dermatol* 2011;21:79-82.
57
58
59
60

- 1
2
3
4
5
6 24. Matilainen V, Koskela P, Keinänen-Kiukaanniemi S. Early androgenetic alopecia as a marker of
7
8
9 insulin resistance. *Lancet* 2000;356:1165-6.
10
11
12 25. Hirso P, Rajala U, Hiltunen L, *et al.* Obesity and low-grade inflammation among young Finnish
13
14
15 men with early-onset alopecia. *Dermatology* 2007;214:125-9.
16
17
18 26. Matilainen VA, Mäkinen PK, Keinänen-Kiukaanniemi SM. Early onset of androgenetic alopecia
19
20
21 associated with early severe coronary heart disease: a population-based, case-control study. *J*
22
23
24 *Cardiovasc Risk*. 2001 Jun;8(3):147-51.
25
26
27 27. Messenger AG, Rundegren J. Minoxidil: mechanisms of action on hair growth. *Br J Dermatol*
28
29
30 2004;150:186-94.
31
32
33 28. Scow DT, Nolte RS, Shaughnessy AF. Medical treatments for balding in men. *Am Fam*
34
35
36 *Physician* 1999;59:2189-94.
37
38
39 29. Su LH, Chen TH. Association of androgenetic alopecia with metabolic syndrome in men: a
40
41
42 community-based survey. *Br J Dermatol* 2010;163:371-7.
43
44
45 30. Ahouansou S, Le Toumelin P, Crickx B, *et al.* Association of androgenetic alopecia and
46
47
48 hypertension. *Eur J Dermatol* 2007;17:220-2.
49
50
51 31. Arias-Santiago S, Gutiérrez-Salmerón MT, Castellote-Caballero L, *et al.* Male androgenetic
52
53
54 alopecia and cardiovascular risk factors: A case-control study. *Actas Dermosifilogr*
55
56
57 2010;101:248-56.
58
59
60

- 1
2
3
4
5
6 32. Yudkin JS, Stehouwer CD, Emeis JJ, *et al.* C-reactive protein in healthy subjects: associations
7
8 with obesity, insulin resistance, and endothelial dysfunction: a potential role for cytokines
9
10 originating from adipose tissue? *Arterioscler Thromb Vasc Biol* 1999;19:972-8.
11
12
13
14 33. Ridker PM. Clinical application of C-reactive protein for cardiovascular disease detection and
15
16 prevention. *Circulation* 2003;107:363-9.
17
18
19
20 34. Hibberts NA, Howell AE, Randall VA. Balding hair follicle dermal papilla cells contain higher
21
22 levels of androgen receptors than those from non-balding scalp. *J Endocrinol* 1998;156:59-65.
23
24
25
26 35. Demark-Wahnefried W, Lesko SM, Conaway MR, *et al.* Serum androgens: associations with
27
28 prostate cancer risk and hair patterning. *J Androl* 1997;18:495-500.
29
30
31
32 36. Fujimoto R, Morimoto I, Morita E, *et al.* Androgen receptors, 5 α -reductase activity and
33
34 androgen-dependent proliferation of vascular smooth muscle cells. *J Steroid Biochem Mol Biol*
35
36 1994;50:169-74.
37
38
39
40 37. Reborna A. Baldness and coronary artery disease: the dermatologic point of view of a
41
42 controversial issue. *Arch Dermatol* 2001;137:943-7.
43
44
45
46 38. Llau ME, Viraben R, Montastruc JL. [Drug-induced alopecia: review of the literature]. *Therapie*
47
48 1995;50:145-50.
49
50
51
52 39. Trost LB, Bergfeld WF, Calogeras E. The diagnosis and treatment of iron deficiency and its
53
54 potential relationship to hair loss. *J Am Acad Dermatol* 2006;54:824-44.
55
56
57
58
59
60

1
2
3
4
5
6
7
8
9
10
11
12
13
14
15
16
17
18
19
20
21
22
23
24
25
26
27
28
29
30
31
32
33
34
35
36
37
38
39
40
41
42
43
44
45
46
47
48
49
50
51
52
53
54
55
56
57
58
59
60

40. Olsen EA. Iron deficiency and hair loss: the jury is still out. J Am Acad Dermatol 2006;54:903-6.

For peer review only

1
2
3
4
5
6 **Figure legends**
7

8
9 **Figure 1. Flow diagram of study selection.**
10

11
12 **Figure 2. Association of baldness with CHD in the 3 cohort studies.**
13

14 The forest plot shows the association between male pattern baldness and the risk of coronary heart
15 disease (CHD). CI=confidence interval; RR=relative risk.
16
17
18

19
20
21 **Figure 3. Association of baldness with CHD in the 3 case-control studies.**
22

23 The forest plot shows the association between male pattern baldness and the risk of coronary heart
24 disease (CHD). CI=confidence interval; RR=relative risk.
25
26
27

28
29 **Figure 4. Association of baldness with CHD in studies using the modified Hamilton scale.**
30

31 The forest plot shows the association between male pattern baldness and the risk of coronary heart
32 disease (CHD). CI=confidence interval; RR=relative risk
33
34
35
36
37
38
39
40
41
42
43
44
45
46
47
48
49
50
51
52
53
54
55
56
57
58
59
60

1
2
3
4
5
6
7
8
9
10
11
12
13
14
15
16
17
18
19
20
21
22
23
24
25
26
27
28
29
30
31
32
33
34
35
36
37
38
39
40
41
42
43
44
45
46
47
48
49

First author,	Type of	Country	Subjects	CHD (events)	Assessment of baldness	Follow-up	Covariates used for adjustment
---------------	---------	---------	----------	--------------	------------------------	-----------	--------------------------------

For peer review only

Table 1. Summary of studies evaluating the association between baldness and coronary heart disease

year of publication	study					(years)	
Schnohr, 1995 (8)	Cohort	Denmark	5837	Myocardial infarction (750)	Simplified Hamilton (None, Frontoparietal, Crown-top, Combined)	12.0	Age, smoking, systolic blood pressure, cholesterol, triglycerides, physical activity, BMI, family history of MI, marital status, education, economic status, diabetes, and alcohol consumption
Ford, 1996 (9)	Cohort	USA	3994	Ischemic heart disease (965)	Personal scale (None, Minimum, Moderate, Severe)	14.0	Age, age squared, race, education, systolic blood pressure, antihypertensive medication, cholesterol, smoking, BMI, and diabetes mellitus
Lotufo, 2000 (10)	Cohort	USA	19112	Nonfatal MI, angina, coronary revascularization (1446)	Modified Hamilton (None, Frontal, Mild vertex, Moderate vertex, Severe vertex)	11.0	Age, aspirin assignment, beta carotene assignment, BMI, height (cm), hypertension, hypercholesterolemia, diabetes, parental history of MI, physical activity, smoking, and alcohol use.

1
2
3
4
5
6
7
8
9
10
11
12
13
14
15
16
17
18
19
20
21
22
23
24
25
26
27
28
29
30
31
32
33
34
35
36
37
38
39
40
41
42
43
44
45
46
47
48
49

Lesko,	Case-	USA	1437	Non-fatal	Modified Hamilton (None,	-	Age, race, religion, years of education, BMI, use of
1993 (11)	control			Myocardial	Frontal only, Mild vertex,		alcohol and cigarettes, family history of myocardial
				infarction (665)	Moderate vertex, Severe vertex)		infarction, personal history of angina, hypertension,
							diabetes, hypercholesterolemia, gout, exercise,
							personality, and number of doctor visits in the past year.
Miric,	Case-	Croatia	1554	Non-fatal	Personal score (None, Any,	-	Age, family history of MI, hypertension,
1998 (12)	control			Myocardial	Frontal, Parietal, Fronto-parietal)		hypercholesterolemia, BMI, diabetes, and smoking.
				infarction (842)			
Shahar,	Case-	USA	5056	Non-fatal	Modified Hamilton (None,	-	Age, smoking, BMI, race-center, cholesterol-lowering
2008 (13)	control			Myocardial	Frontal, Mild vertex, Moderate		medication, antihypertensive medication, HDL,
				infarction (767)	vertex, Severe vertex)		diabetes, educational level, and family history of MI.

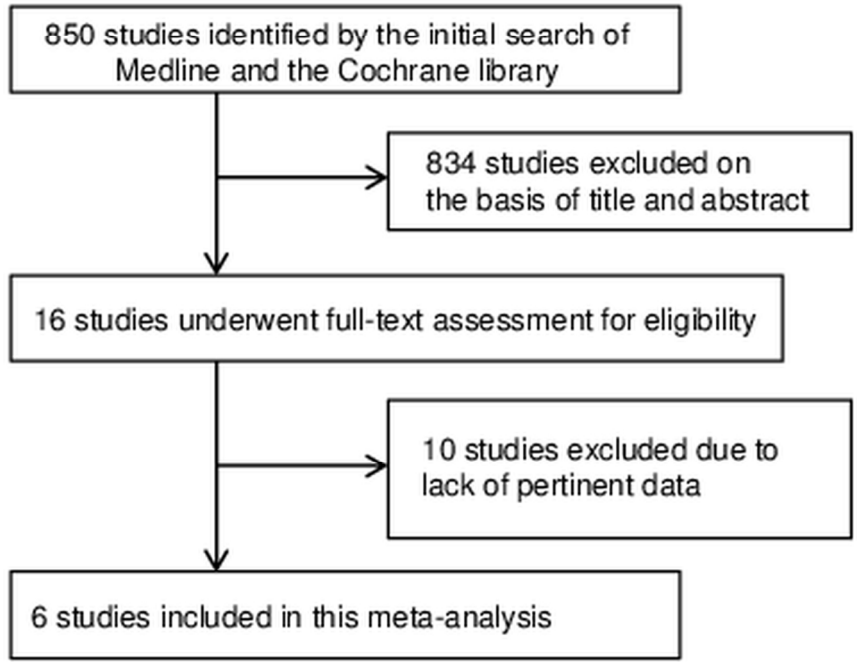
CHD, coronary heart disease; BMI, body mass index; MI, myocardial infarction; AGA, androgenic alopecia; HDL, high density lipoprotein;

1
2
3
4
5
6
7
8
9
10
11
12
13
14
15
16
17
18
19
20
21
22
23
24
25
26
27
28
29
30
31
32
33
34
35
36
37
38
39
40
41
42
43
44
45
46
47
48
49

For peer review only

1
2
3
4
5
6
7
8
9
10
11
12
13
14
15
16
17
18
19
20
21
22
23
24
25
26
27
28
29
30
31
32
33
34
35
36
37
38
39
40
41
42
43
44
45
46
47
48
49
50
51
52
53
54
55
56
57
58
59
60

Fig. 1



120x90mm (300 x 300 DPI)

ew only



PRISMA 2009 Checklist

Section/topic	#	Checklist item	Reported on page #
TITLE			
Title	1	Identify the report as a systematic review, meta-analysis, or both.	1
ABSTRACT			
Structured summary	2	Provide a structured summary including, as applicable: background; objectives; data sources; study eligibility criteria, participants, and interventions; study appraisal and synthesis methods; results; limitations; conclusions and implications of key findings; systematic review registration number.	2-3
INTRODUCTION			
Rationale	3	Describe the rationale for the review in the context of what is already known.	5-6
Objectives	4	Provide an explicit statement of questions being addressed with reference to participants, interventions, comparisons, outcomes, and study design (PICOS).	5-6
METHODS			
Protocol and registration	5	Indicate if a review protocol exists, if and where it can be accessed (e.g., Web address), and, if available, provide registration information including registration number.	6
Eligibility criteria	6	Specify study characteristics (e.g., PICOS, length of follow-up) and report characteristics (e.g., years considered, language, publication status) used as criteria for eligibility, giving rationale.	6
Information sources	7	Describe all information sources (e.g., databases with dates of coverage, contact with study authors to identify additional studies) in the search and date last searched.	6-7
Search	8	Present full electronic search strategy for at least one database, including any limits used, such that it could be repeated.	6
Study selection	9	State the process for selecting studies (i.e., screening, eligibility, included in systematic review, and, if applicable, included in the meta-analysis).	6-7
Data collection process	10	Describe method of data extraction from reports (e.g., piloted forms, independently, in duplicate) and any processes for obtaining and confirming data from investigators.	6-7
Data items	11	List and define all variables for which data were sought (e.g., PICOS, funding sources) and any assumptions and simplifications made.	7
Risk of bias in individual studies	12	Describe methods used for assessing risk of bias of individual studies (including specification of whether this was done at the study or outcome level), and how this information is to be used in any data synthesis.	7
Summary measures	13	State the principal summary measures (e.g., risk ratio, difference in means).	7-8
Synthesis of results	14	Describe the methods of handling data and combining results of studies, if done, including measures of consistency (e.g., I^2) for each meta-analysis.	7-9



PRISMA 2009 Checklist

Section/topic	#	Checklist item	Reported on page #
Risk of bias across studies	15	Specify any assessment of risk of bias that may affect the cumulative evidence (e.g., publication bias, selective reporting within studies).	7-9
Additional analyses	16	Describe methods of additional analyses (e.g., sensitivity or subgroup analyses, meta-regression), if done, indicating which were pre-specified.	7-9
RESULTS			
Study selection	17	Give numbers of studies screened, assessed for eligibility, and included in the review, with reasons for exclusions at each stage, ideally with a flow diagram.	9, Fig 1
Study characteristics	18	For each study, present characteristics for which data were extracted (e.g., study size, PICOS, follow-up period) and provide the citations.	9, Table 1
Risk of bias within studies	19	Present data on risk of bias of each study and, if available, any outcome level assessment (see item 12).	9, Table 1
Results of individual studies	20	For all outcomes considered (benefits or harms), present, for each study: (a) simple summary data for each intervention group (b) effect estimates and confidence intervals, ideally with a forest plot.	9-10, Table 1, Fig 2-4
Synthesis of results	21	Present results of each meta-analysis done, including confidence intervals and measures of consistency.	10-12, Fig 2-4
Risk of bias across studies	22	Present results of any assessment of risk of bias across studies (see Item 15).	10-13 Suppl.2
Additional analysis	23	Give results of additional analyses, if done (e.g., sensitivity or subgroup analyses, meta-regression [see Item 16]).	11-14
DISCUSSION			
Summary of evidence	24	Summarize the main findings including the strength of evidence for each main outcome; consider their relevance to key groups (e.g., healthcare providers, users, and policy makers).	14-15
Limitations	25	Discuss limitations at study and outcome level (e.g., risk of bias), and at review-level (e.g., incomplete retrieval of identified research, reporting bias).	16-18
Conclusions	26	Provide a general interpretation of the results in the context of other evidence, and implications for future research.	18-19
FUNDING			
Funding	27	Describe sources of funding for the systematic review and other support (e.g., supply of data); role of funders for the systematic review.	19-21



PRISMA 2009 Checklist

doi:10.1371/journal.pmed1000097

For more information, visit: www.prisma-statement.org.

Page 2 of 2

For peer review only

1
2
3
4
5
6
7
8
9
10
11
12
13
14
15
16
17
18
19
20
21
22
23
24
25
26
27
28
29
30
31
32
33
34
35
36
37
38
39
40
41
42
43
44
45
46
47
48
49

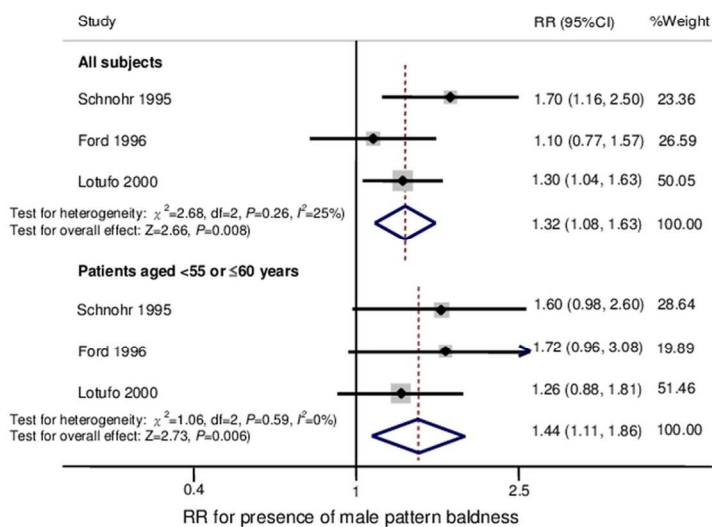
Supplementary Data 2. Newcastle-Ottawa quality assessment scale for observational studies

Study reference (author, year)	Selection	Comparability	Outcome/Exposure
Cohort studies			
Schnohor, 1995 (8)	***	**	***
Ford, 1996 (9)	***	**	***
Lotufo, 2000 (10)	***	**	***
Case-control studies			
Lesko, 1993 (11)	**	**	**
Miric, 1998 (12)	***	**	**
Shahar, 2008 (13)	****	**	**

For peer review only

1
2
3
4
5
6
7
8
9
10
11
12
13
14
15
16
17
18
19
20
21
22
23
24
25
26
27
28
29
30
31
32
33
34
35
36
37
38
39
40
41
42
43
44
45
46
47
48
49
50
51
52
53
54
55
56
57
58
59
60

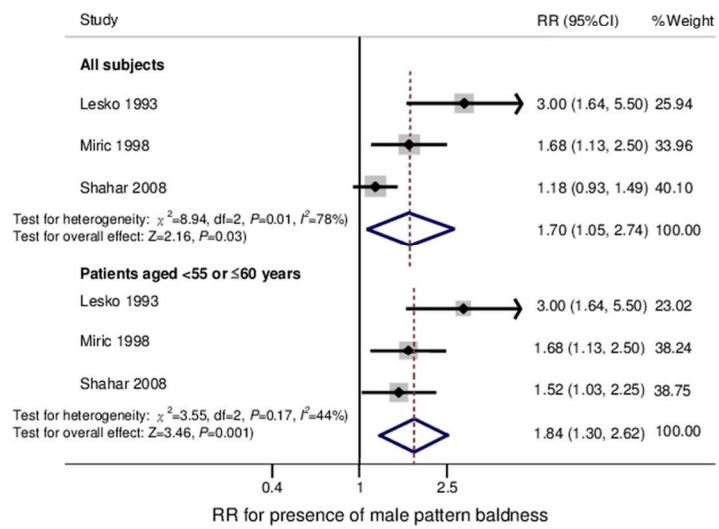
Fig. 2



90x116mm (300 x 300 DPI)

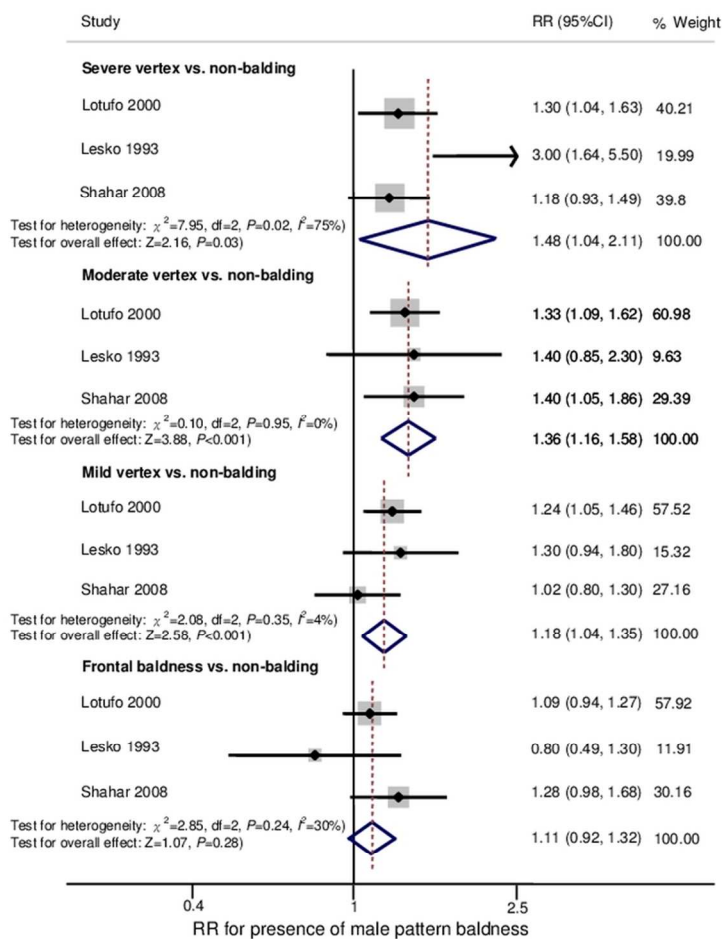
1
2
3
4
5
6
7
8
9
10
11
12
13
14
15
16
17
18
19
20
21
22
23
24
25
26
27
28
29
30
31
32
33
34
35
36
37
38
39
40
41
42
43
44
45
46
47
48
49
50
51
52
53
54
55
56
57
58
59
60

Fig. 3



90x116mm (300 x 300 DPI)

Fig. 4



90x116mm (300 x 300 DPI)