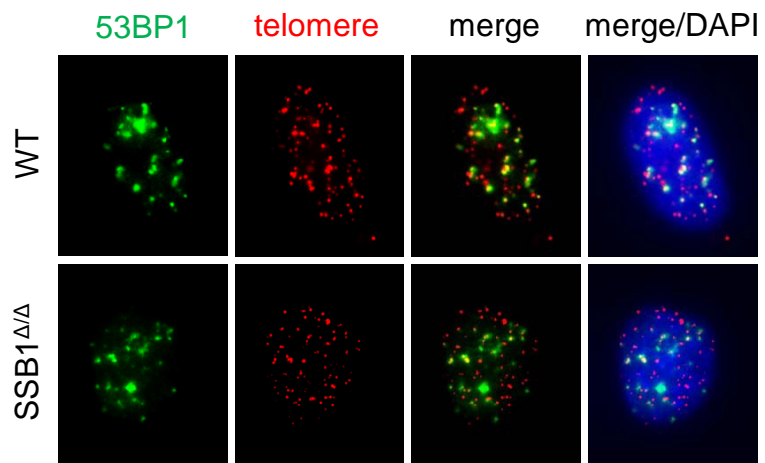
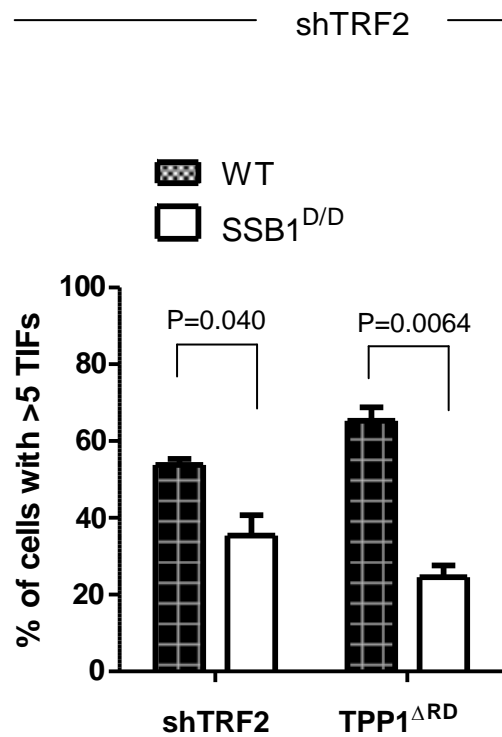


A



C



B

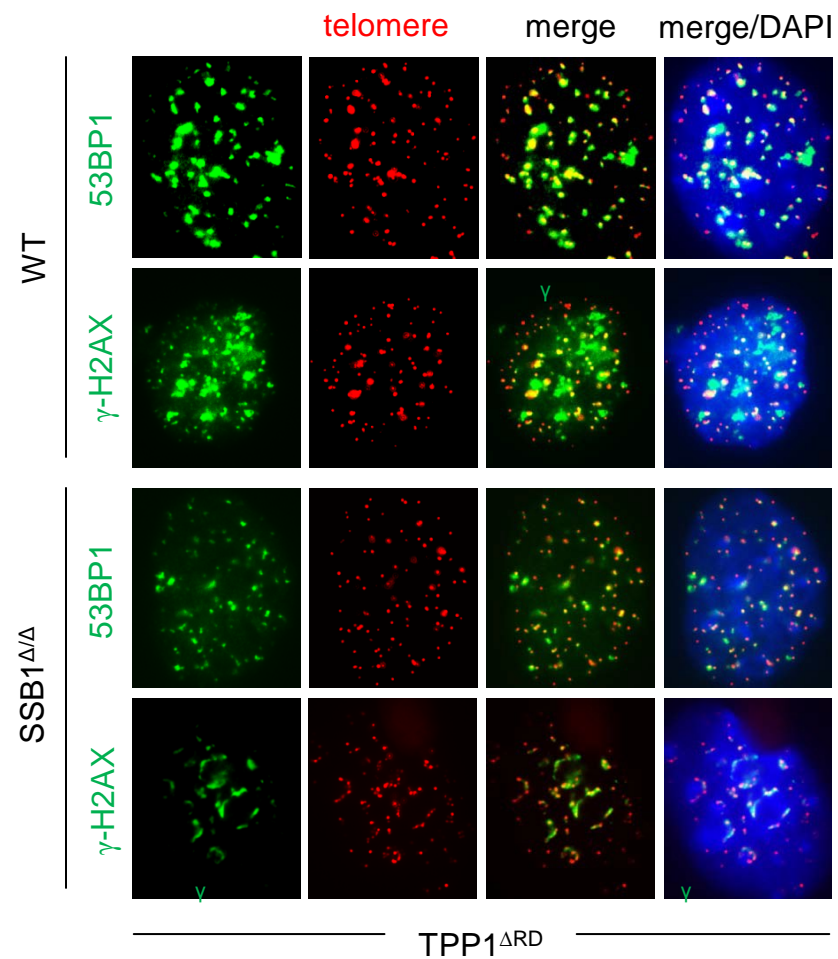


Figure S3 TIF analysis in WT and *mSSBI*^{ΔΔ} MEFs. **(A)** 53BP1 localization to telomeres devoid of TRF2 in WT and *mSSBI*^{ΔΔ} MEFs. **(B)** 53BP1 and γ -H2AX localization to telomeres devoid of TPP1-Pot1a/b in WT and *mSSBI*^{ΔΔ} MEFs. **(C)** Quantification of TIFs in **A** and **B**. Mean values were generated from two independent cell lines for each genotype. The one-tailed t-test was used to calculate P values. Cells with more than 5 TIF were scored as positive. Error bars: standard error of the mean (s.e.m.)