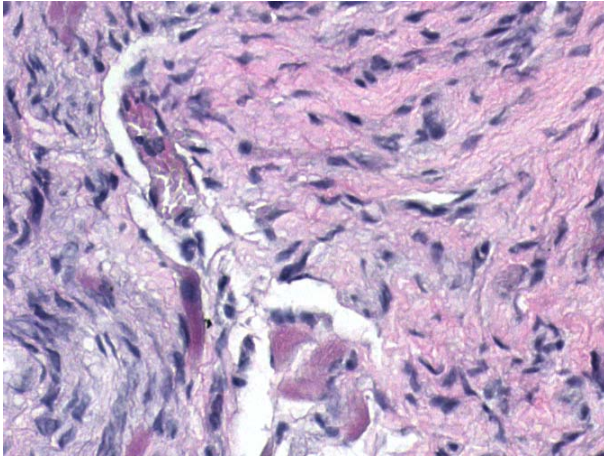
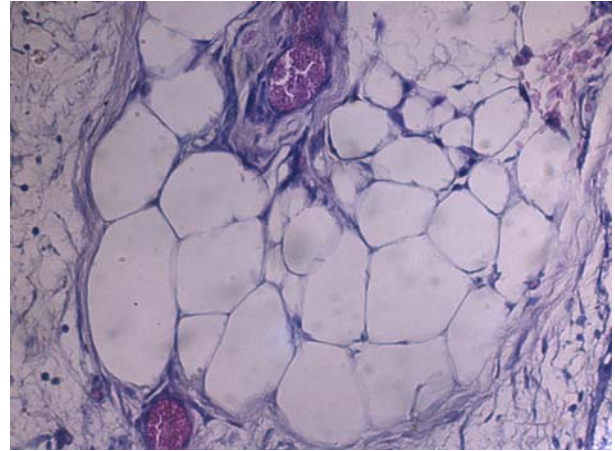


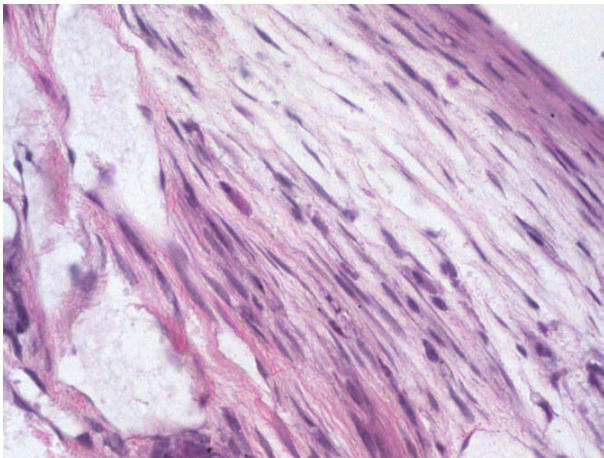
A. Newly formed bone matrix



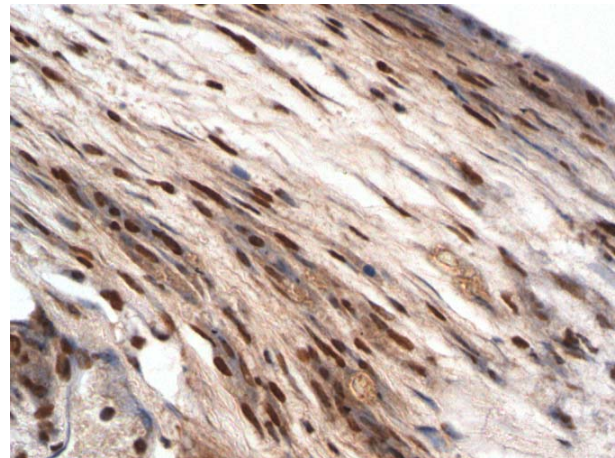
B. Fat tissue



C. Connective fibers



D. GFP



Supplementary information, Figure S9: In vivo Differentiation of BM MSCs.

Two months after subcutaneous implantation of 1×10^6 BM MSCs in HA-TCP blocks to nude mice, the implants were harvested for microsectioning and Hematoxylin and Eosin staining analysis. (A) Newly deposited bone matrix formed from implanted human BM MSCs (400x). (B) Adipocytes derived from implanted human BM MSCs (400x). (C) Connective fibers formed from human BM MSCs (400x). (D) GFP positive staining suggests differentiated tissues are from GFP-transduced human BM MSCs (400x). Brown colored are stained GFP⁺ cells.