

Test Western Blot to check efficiency of anti DNM1L and anti Actin antibodies

Lanes 1-6: 6 different crude COS-7 cell lysates
 Lane 7: recombinantly expressed DNM1L
 Lane 7 was used for Figure 2F to probe the antibody

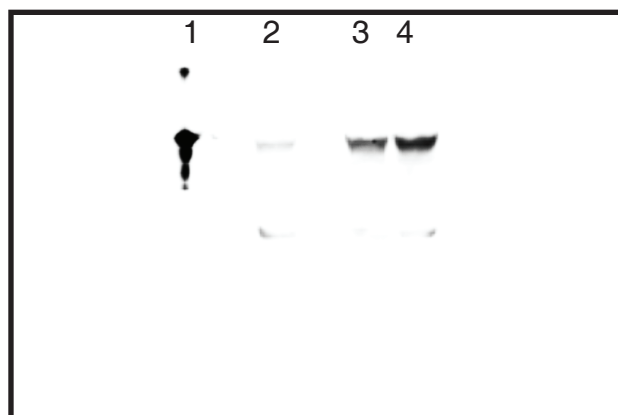
Experimental Western Blot to check efficiency of anti DNM1L siRNA

Lane 1: recombinantly expressed DNM1L
 Lane 2: crude COS-7 cell lysate with anti DNM1L siRNA
 Lane 3: crude COS-7 cell lysate with scrambled siRNA
 Lane 4: crude COS-7 cell lysate

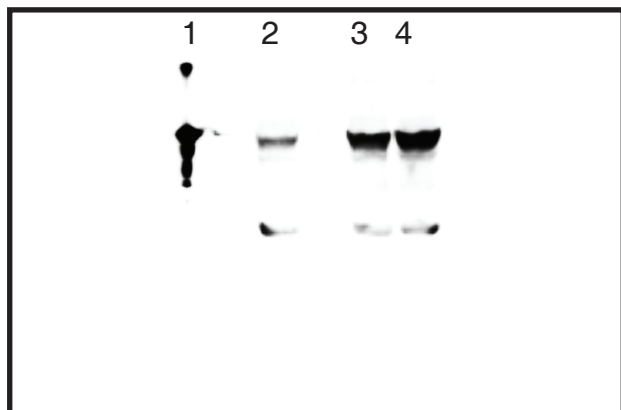
20s



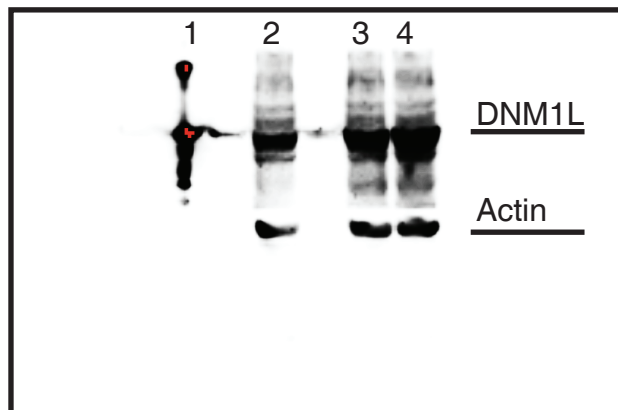
80s



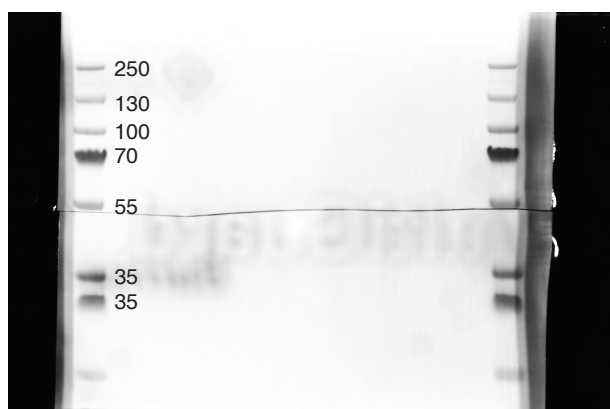
120s, used for DNM1L Figure 2F



240s, used for Actin Figure 2F



Marker



Overlay Marker / Blot

