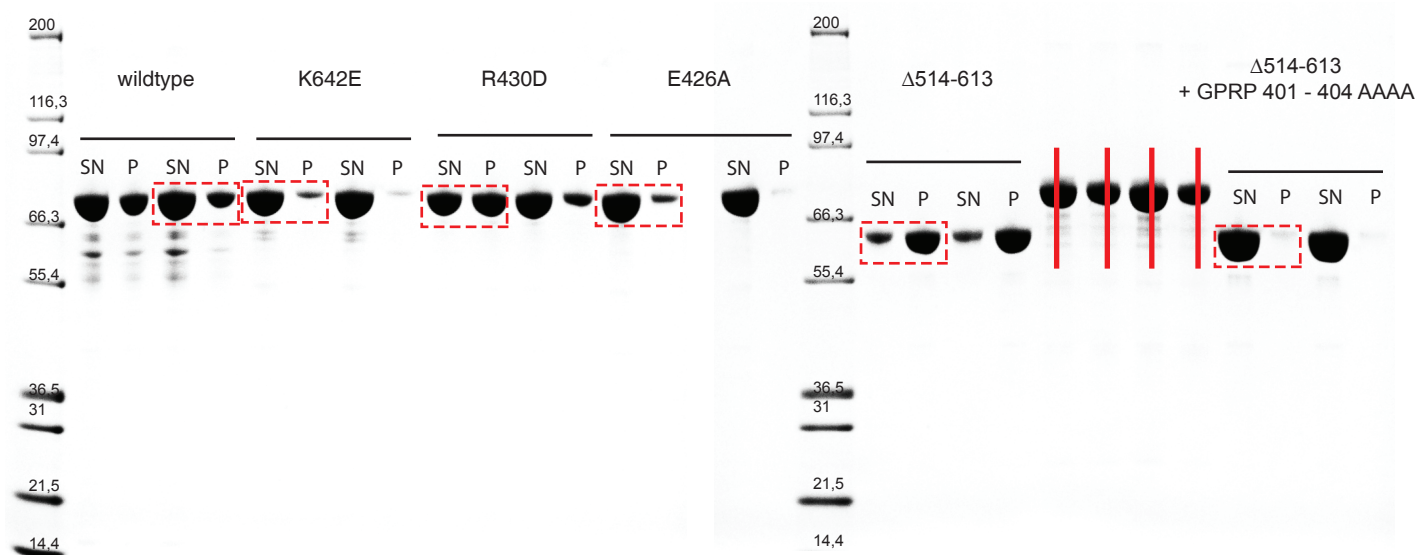
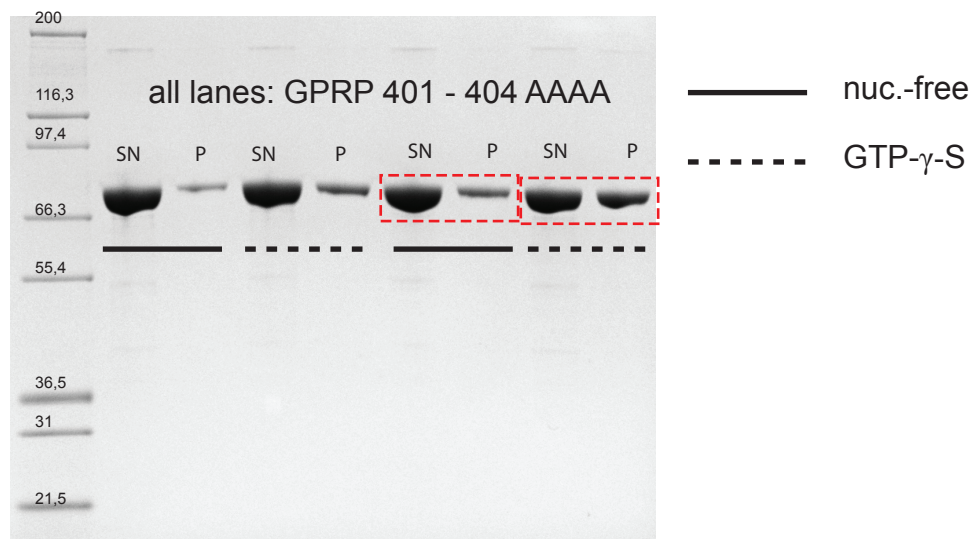


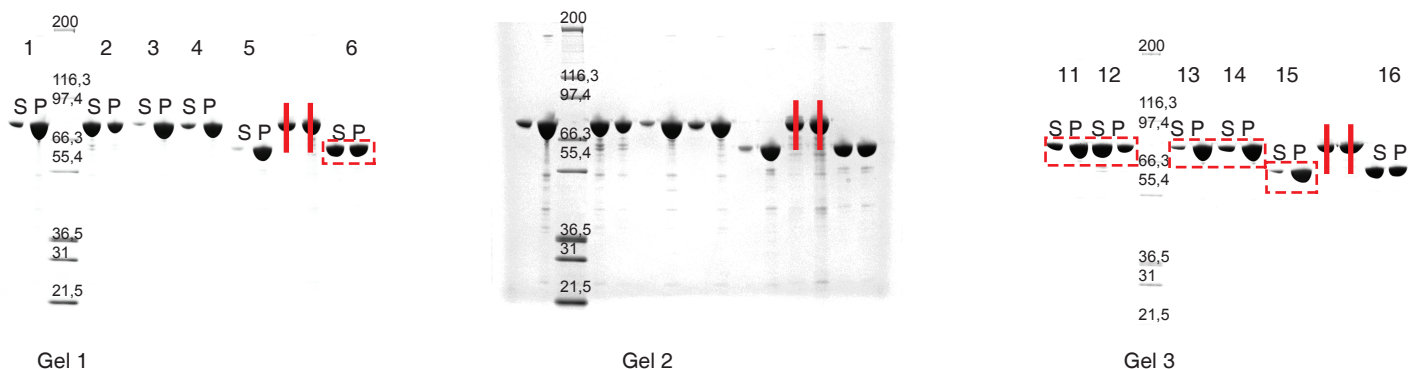
# Spin Assay no liposomes, nuc.-free



# Spin Assay no liposomes, nuc.-free, GTP- $\gamma$ -S



# Spin Assay no liposomes, GTP- $\gamma$ -S

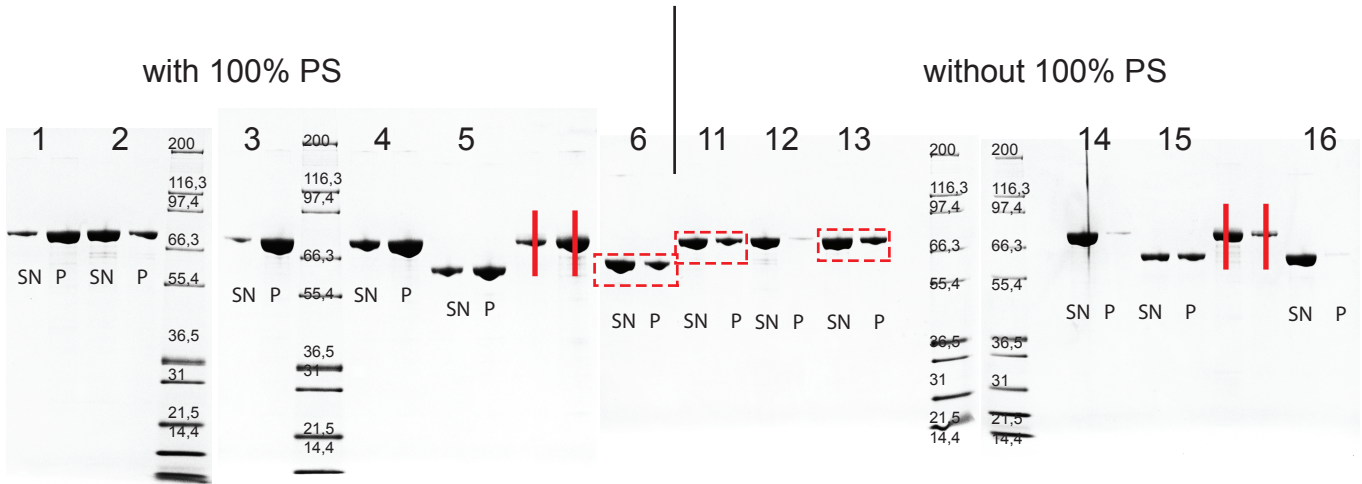
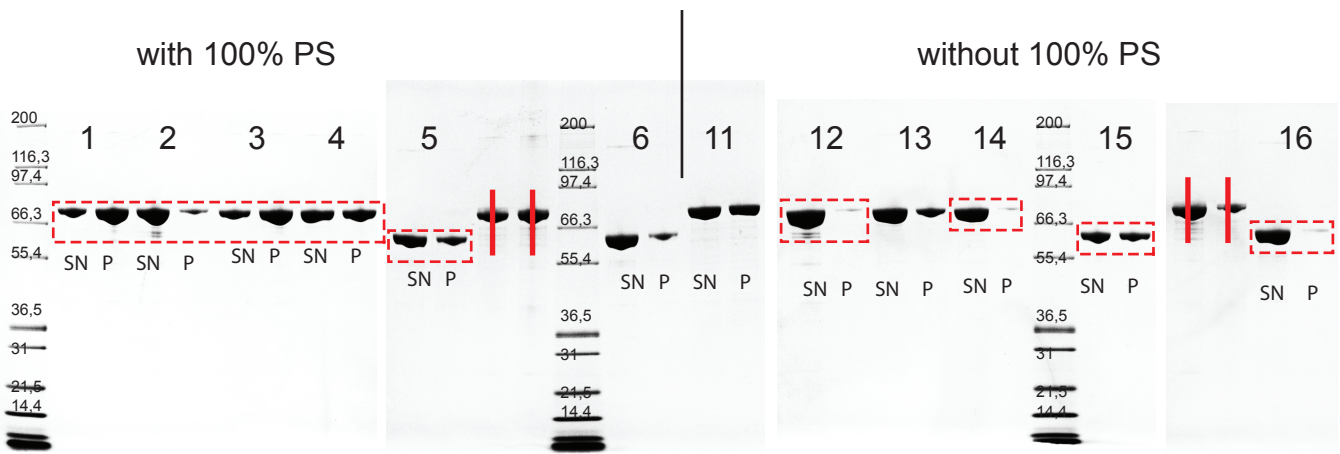


Gel 1 and gel 2 are the same gels. Gel 2 is artificially photoshopped (brightness and contrast lowered) to show gel quality.

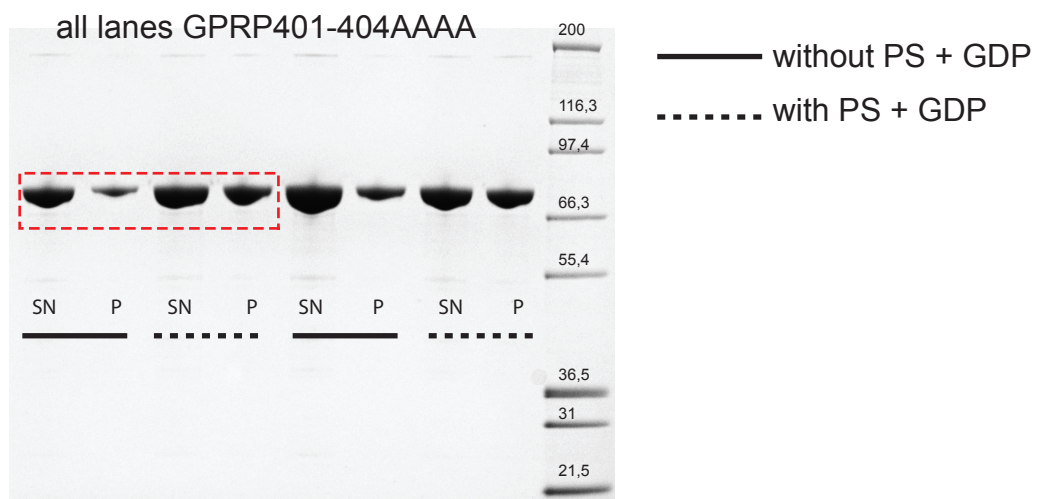
- 1/11 wildtype
- 2/12 K642E
- 3/13 R430D
- 4/14 E426A
- 5/15  $\Delta 514-613$
- 6/16  $\Delta 514-613 + \text{GPRP}401-404\text{AAAA}$

All gel lanes used for figures in the manuscript are boxed.

# Spin Assay w/ and w/o PS liposomes in the presence of GDP



- 1 / 11 = wildtype
- 2 / 12 = K642E (interface 2)
- 3 / 13 = R430D (interface 5)
- 4 / 14 = E426A (interface 4)
- 5 / 15 =  $\Delta$ 514-613 (no B-insert)
- 6 / 16 =  $\Delta$ 514-613 + GPRP 401 - 404 AAAA



All gel lanes used for figures in the manuscript are boxed.