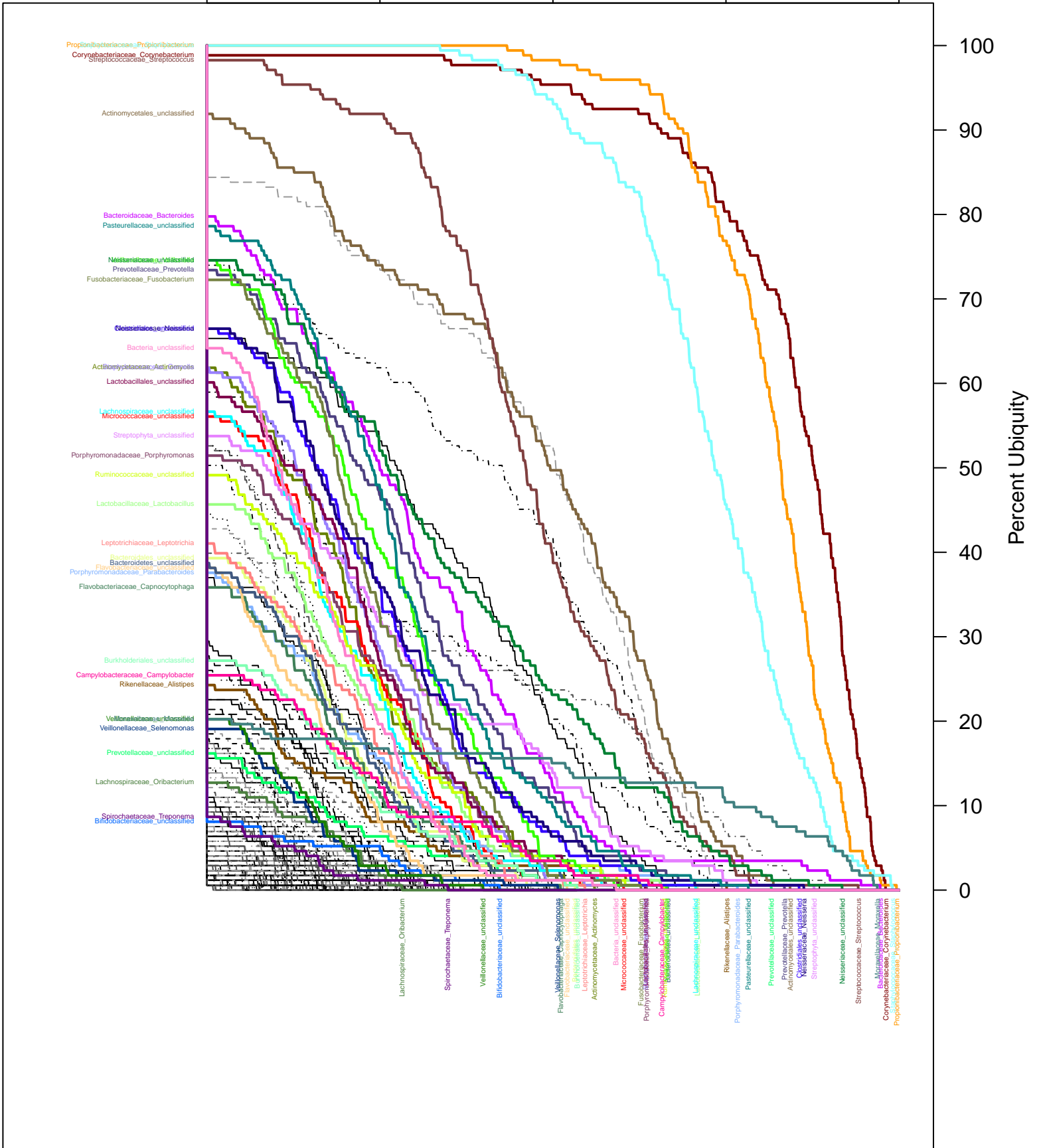


v35.Taxa.Anterior_nares.cdf

Log₁₀(Abundance)

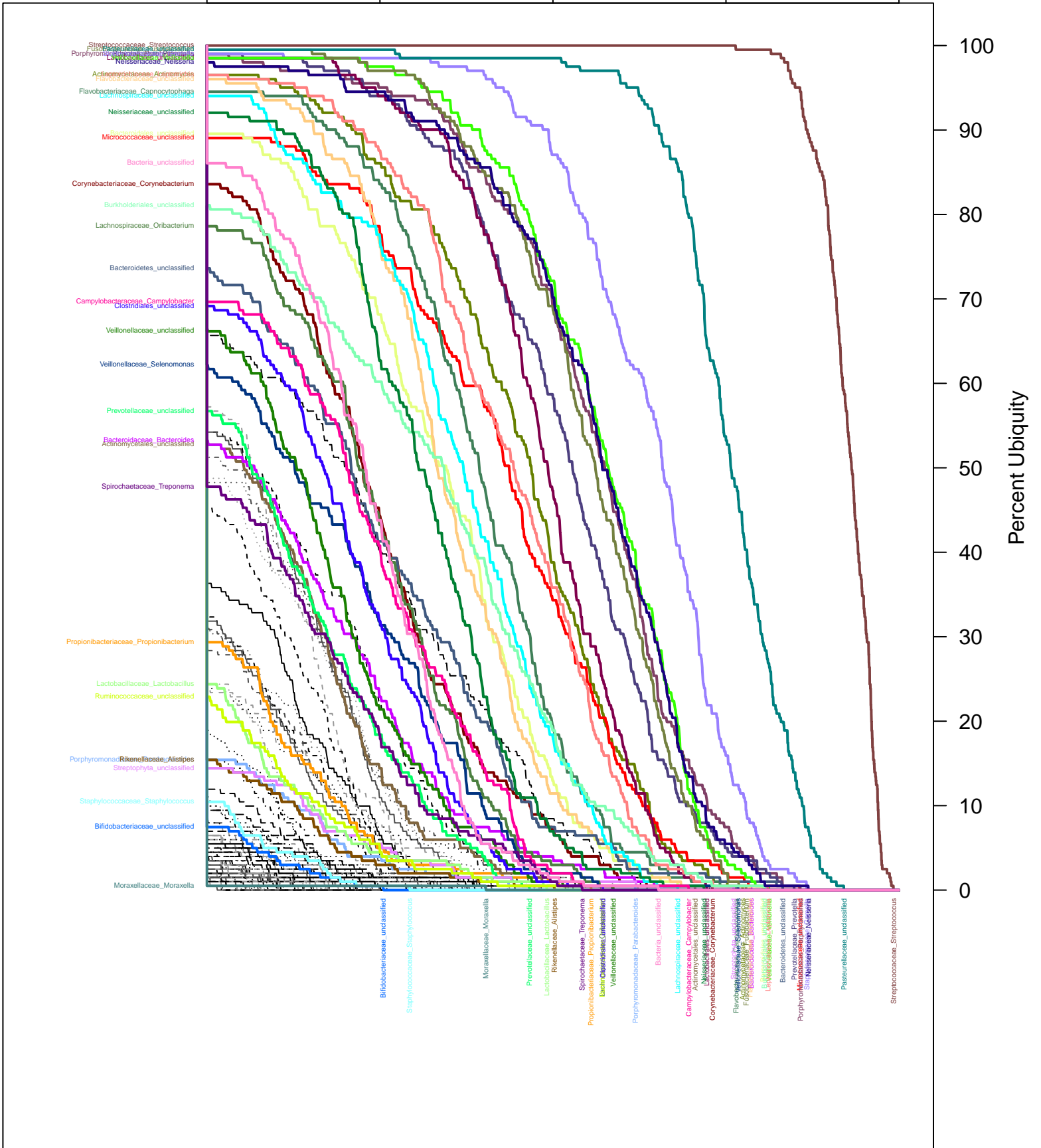
-4 -3 -2 -1 0



v35.Taxa.Buccal_mucosa.cdf

Log₁₀(Abundance)

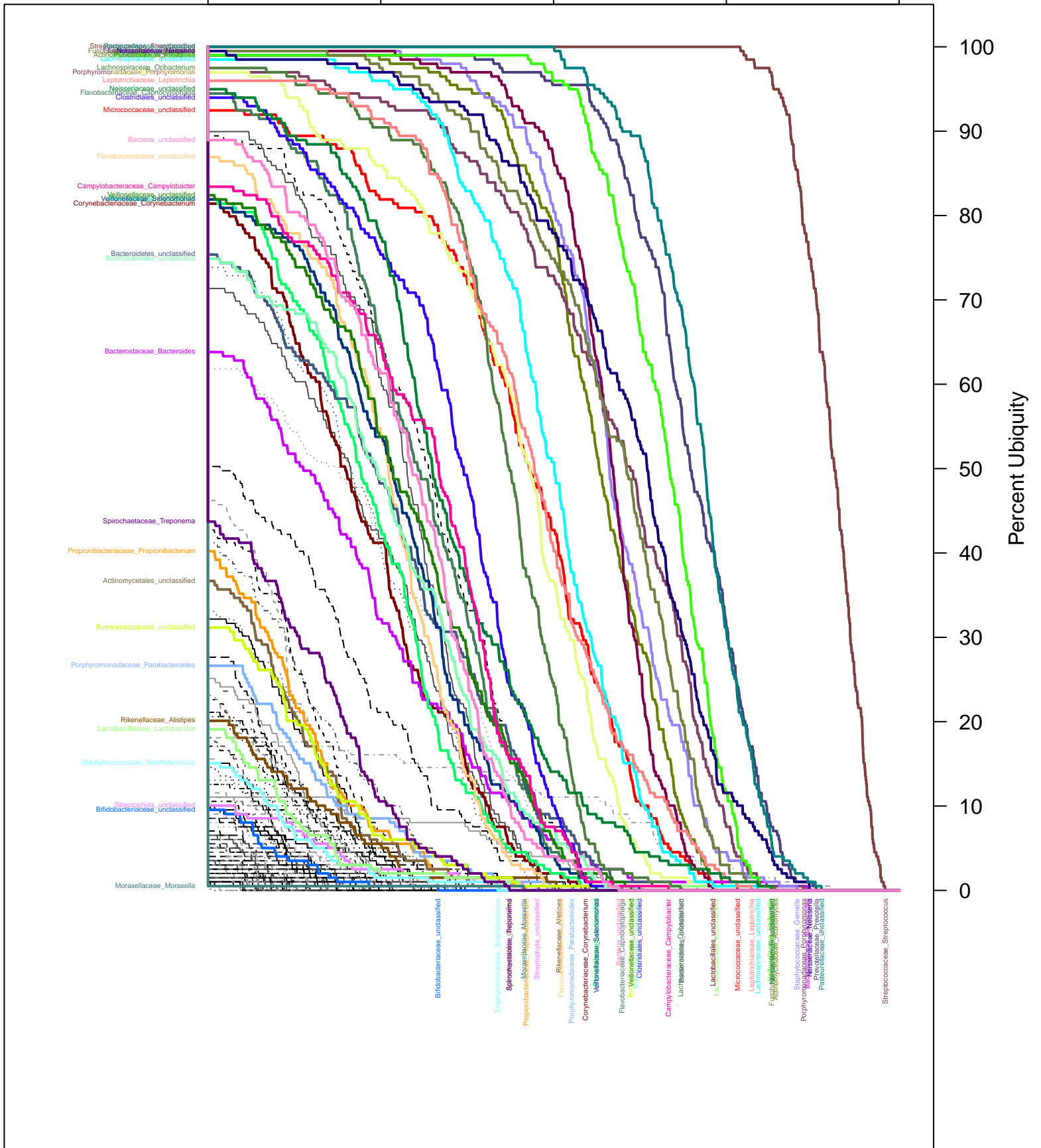
-4 -3 -2 -1 0



v35.Taxa.Hard_palate.cdf

Log₁₀(Abundance)

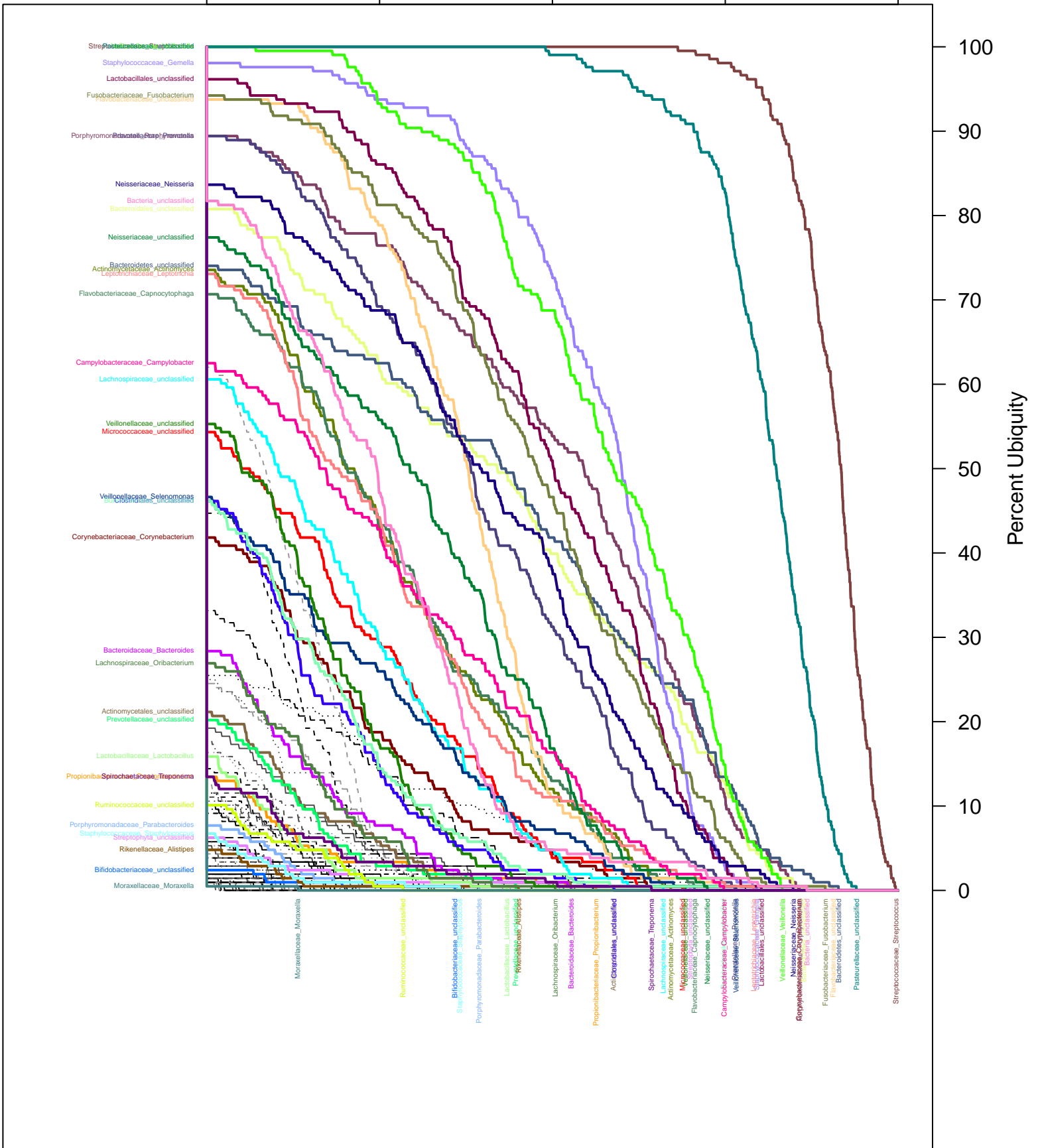
-4 -3 -2 -1 0



v35.Taxa.Keratinized_gingiva.cdf

Log₁₀(Abundance)

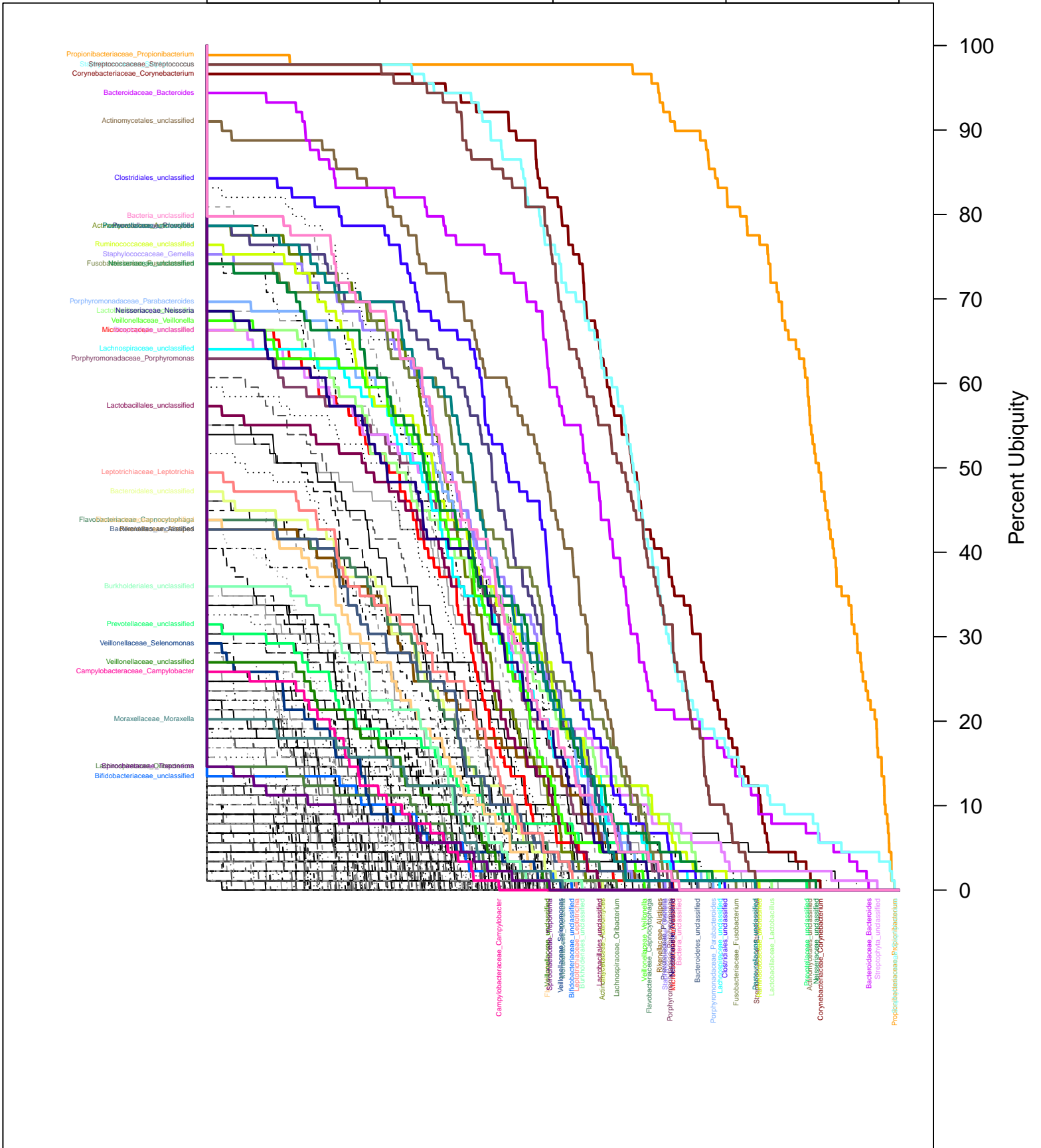
-4 -3 -2 -1 0



v35.Taxa.L_Antecubital_fossa.cdf

Log₁₀(Abundance)

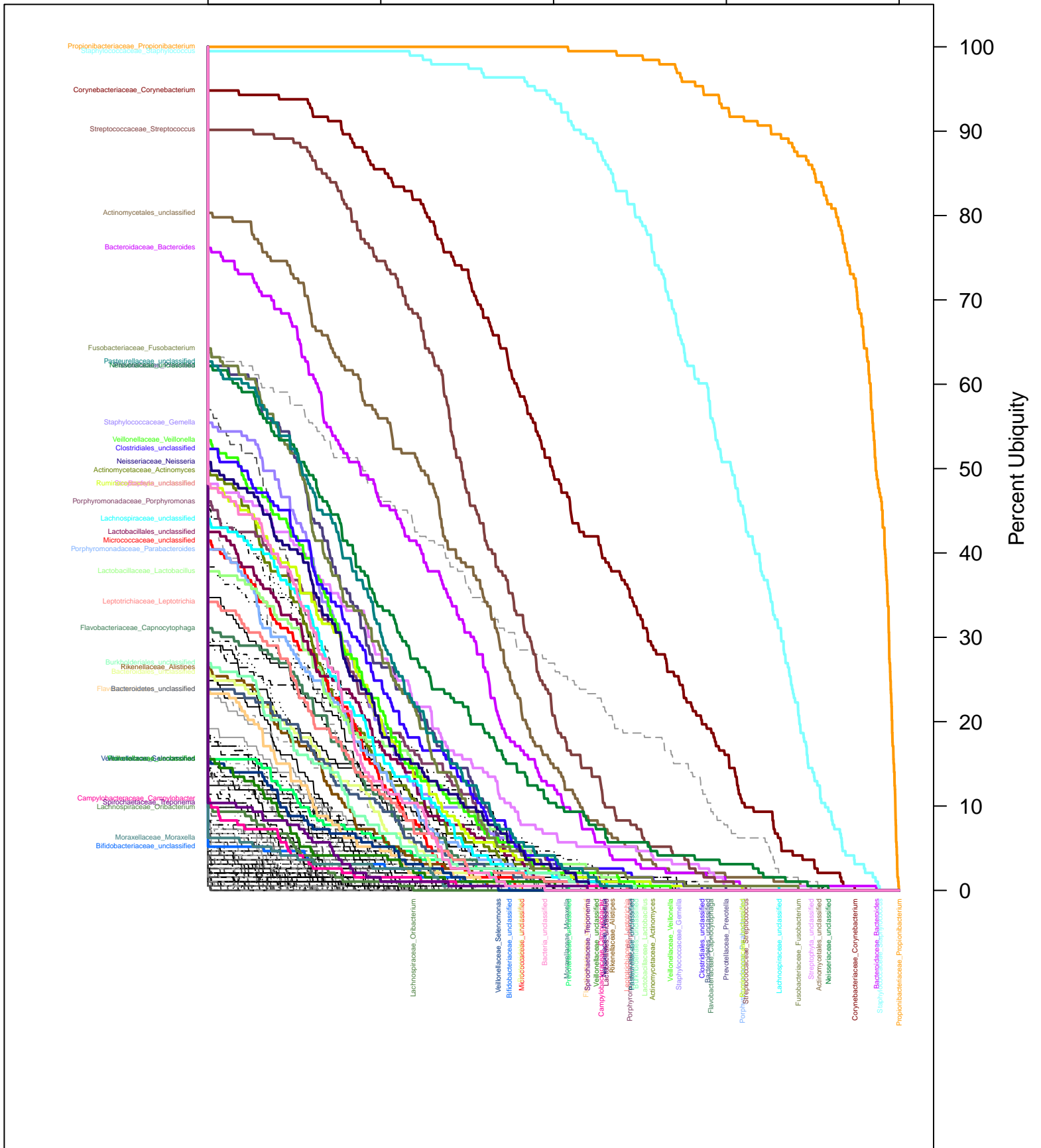
-4 -3 -2 -1 0



v35.Taxa.L_Retroauricular_crease.cdf

Log₁₀(Abundance)

-4 -3 -2 -1 0



v35.Taxa.Mid_vagina.cdf

Log₁₀(Abundance)

-4 -3 -2 -1 0

100

90

80

70

60

50

40

30

20

10

0

Percent Ubiquity

Lactobacillaceae_Lactobacillus

Lactobacillales_unclassified

Prevotellaceae_Prevotella

Streptococcaceae_Streptococcus

Bacteroidaceae_Bacteroides

Corynebacteriaceae_Corynebacterium

Bacteria_unclassified

Lachnospiraceae_unclassified

Propionibacteriaceae_Propionibacterium

Staphylococcaceae_unclassified

Ruminococcaceae_unclassified

Actinomycetaceae_Actinomycetes

Veillonellaceae_Veillonella

Porphyromonadaceae_Porphyromonas

Fusobacteriaceae_Fusobacterium

Campylobacteriaceae_Campylobacter

Staphylococcaceae_Gemella

Veillonellaceae_unclassified

Pasteurellaceae_unclassified

Rikenellaceae_Alistipes

Neisseriaceae_Neisseria

Porphyromonadaceae_Parabacteroides

Leptotrichiaceae_Leptotrichia

Micrococcaceae_unclassified

Bacteroidales_unclassified

Bacteroidetes_unclassified

Flavobacteriaceae_Capnocytophaga

Veillonellaceae_unclassified

Burkholderiales_unclassified

Moraxellaceae_Moraxella

Moraxellaceae_Moraxella

Lachnospiraceae_Oribacterium

Veillonellaceae_unclassified

Spirochaetaceae_Treponema

Veillonellaceae_Selencomonas

Micrococcaceae_unclassified

Flavobacteriaceae_Capnocytophaga

Neisseriaceae_Neisseria

Rikenellaceae_Alistipes

Leptotrichiaceae_Leptotrichia

Flavobacteriaceae_unclassified

Bacteroidetes_unclassified

Prevotellaceae_Prevotella

Veillonellaceae_Veillonella

Actinomycetaceae_Actinomycetes

Campylobacteriaceae_Campylobacter

Veillonellaceae_unclassified

Porphyromonadaceae_Porphyromonas

Fusobacteriaceae_Fusobacterium

Bacteria_unclassified

Staphylococcaceae_Staphylococcus

Lactobacillales_unclassified

Fusobacteriaceae_Fusobacterium

Lachnospiraceae_unclassified

Prevotellaceae_unclassified

Streptococcaceae_Streptococcus

Corynebacteriaceae_Corynebacterium

Prevotellaceae_Prevotella

Clostridiales_unclassified

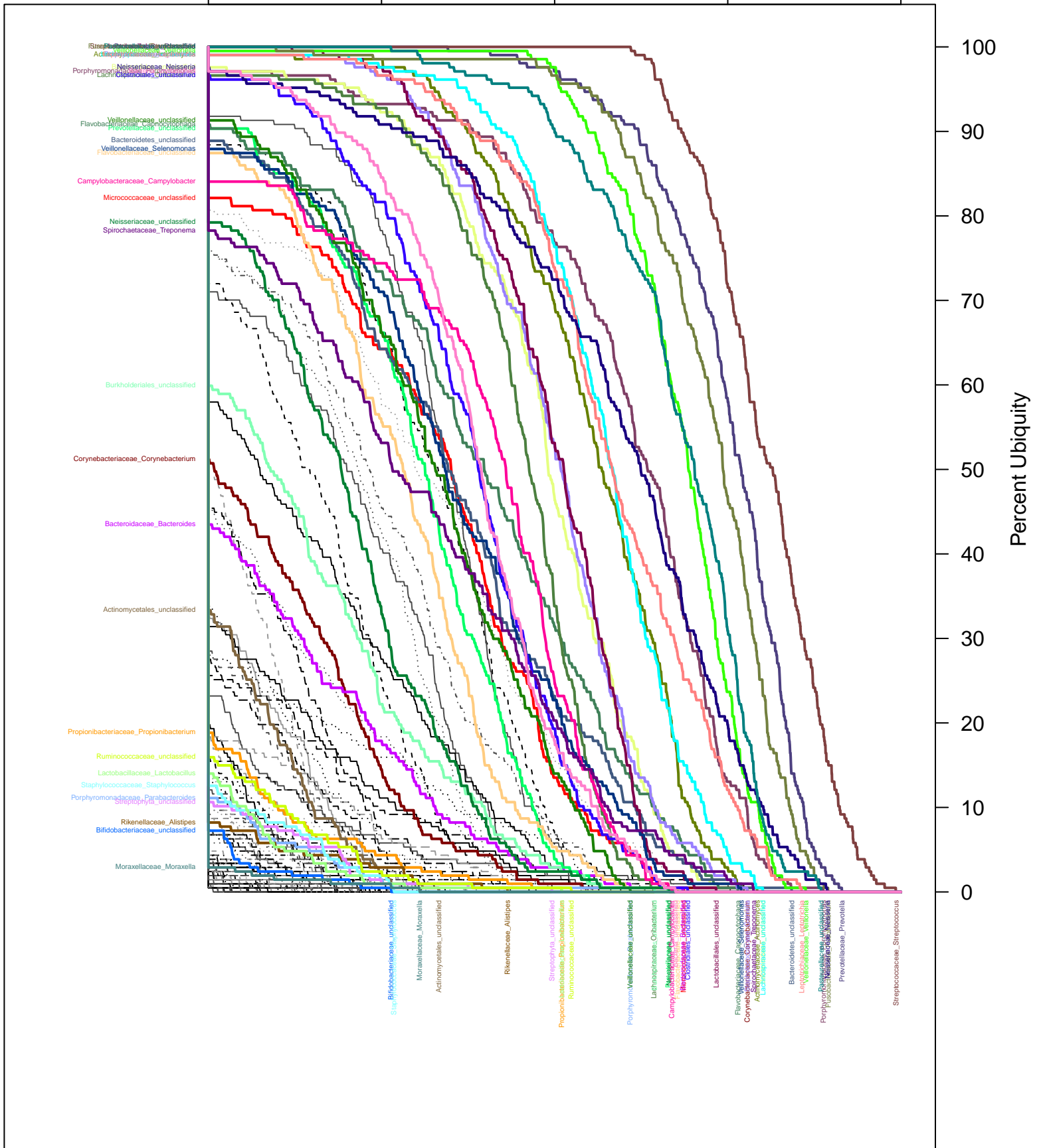
Bifidobacteriaceae_unclassified

Lactobacillaceae_Lactobacillus

v35.Taxa.Palatine_Tonsils.cdf

Log₁₀(Abundance)

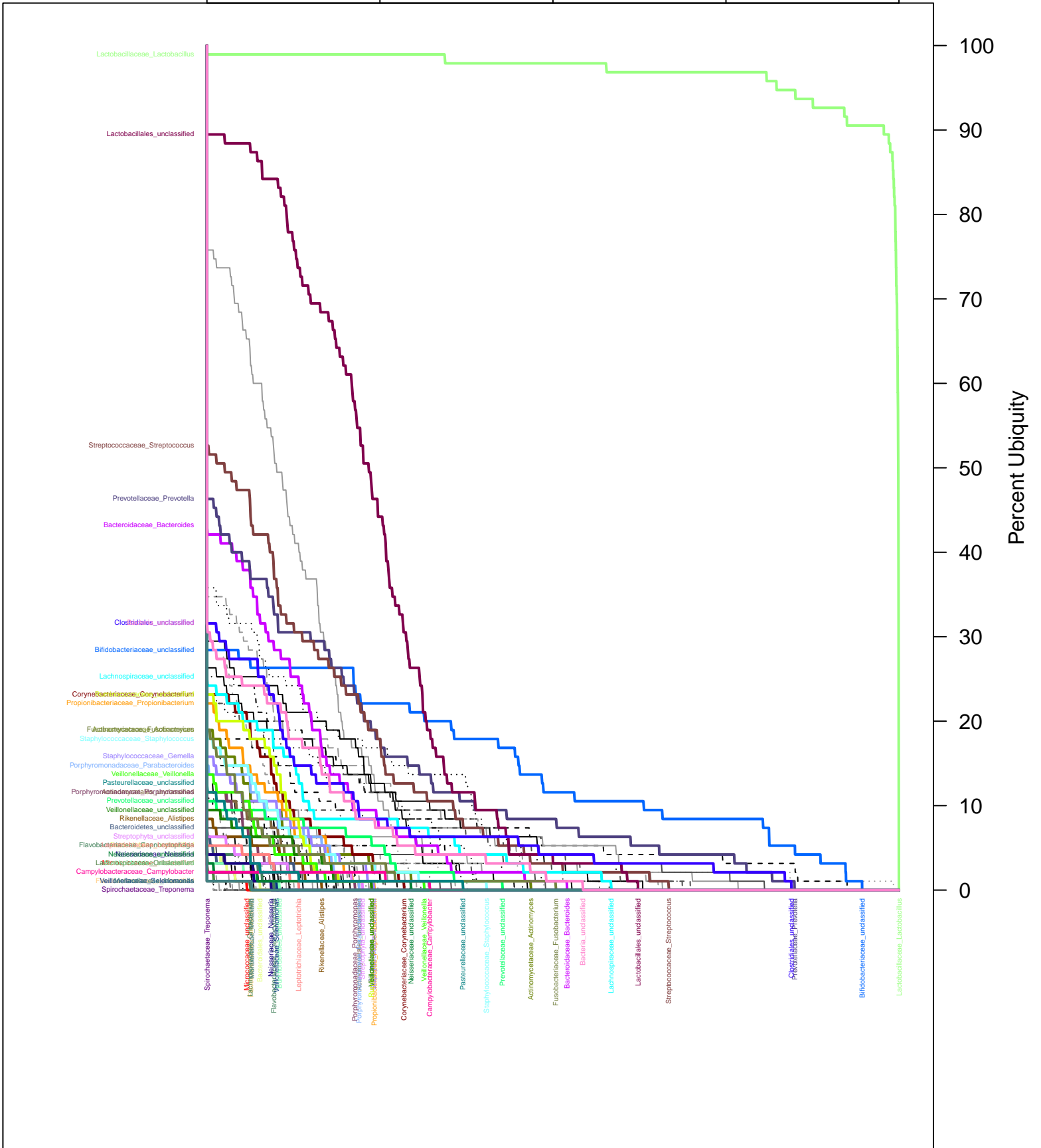
-4 -3 -2 -1 0



v35.Taxa.Posterior_fornix.cdf

Log₁₀(Abundance)

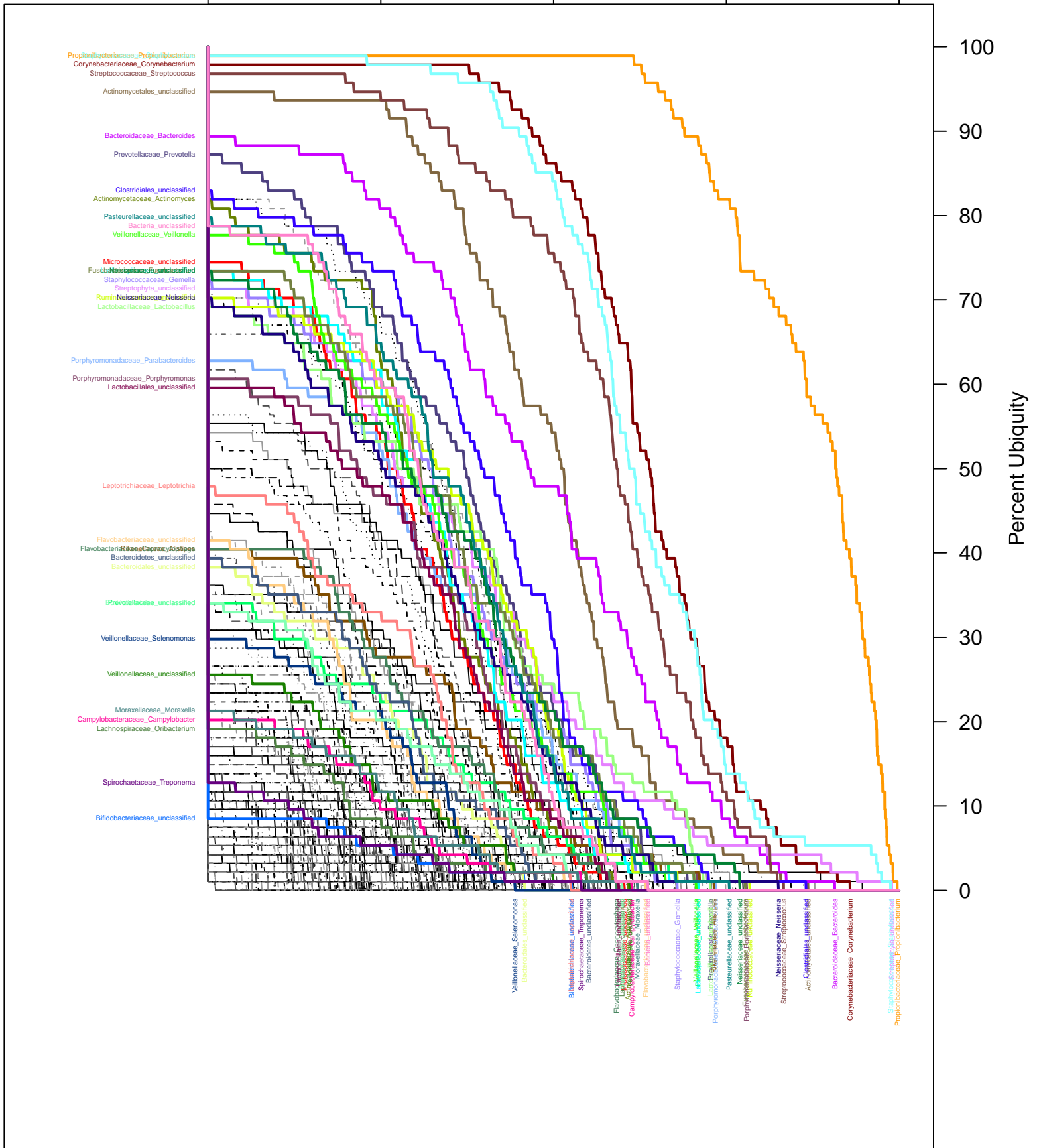
-4 -3 -2 -1 0



v35.Taxa.R_Antecubital_fossa.cdf

Log₁₀(Abundance)

-4 -3 -2 -1 0

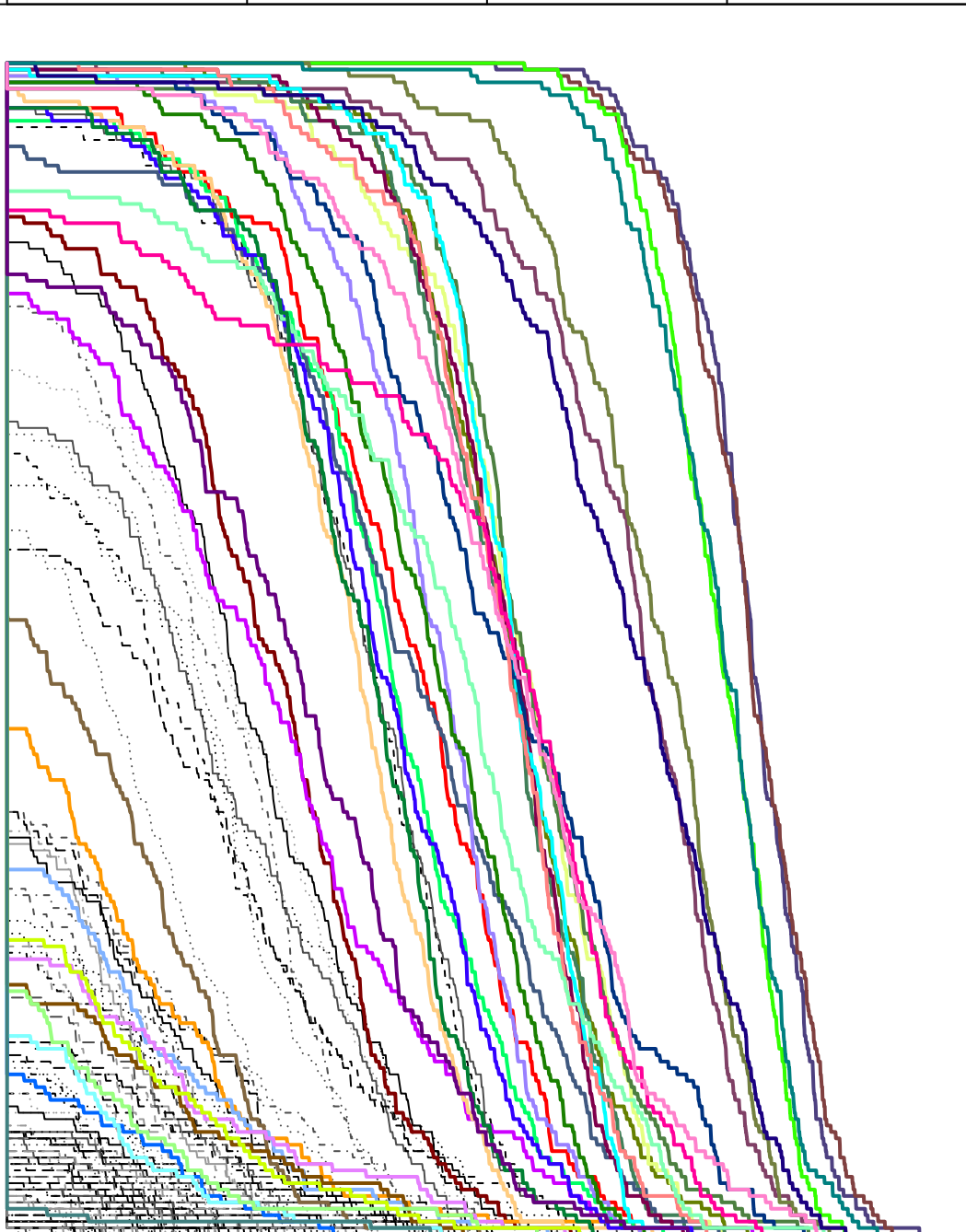


v35.Taxa.Saliva.cdf

Log₁₀(Abundance)

-4 -3 -2 -1 0

Popillidae
Flavobacteriaceae_Spirillum
Verrucomycetozoa
Lactosporaceae
Mniotrypa
Prevotellaceae_unclassified
Bacteroidetes_unclassified
Burkholderiales_unclassified
Campylobacteriaceae_Campylobacter
Corynebacteriaceae_Corynebacterium
Spirochaetaeae_Treponema
Bacteroidaceae_Bacteroides
Actinomyetales_unclassified
Propionibacteriaceae_Propionibacterium
Porphyromonadaceae_Parabacteroides
Ruminococcaceae_unclassified
Streptophyta_unclassified
Rikenellaceae_Alistipes
Lactobacillaceae_Lactobacillus
Staphylococcaceae_Staphylococcus
Bifidobacteriaceae_unclassified
Moraxellaceae_Moraxella



100
90
80
70
60
50
40
30
20
10
0

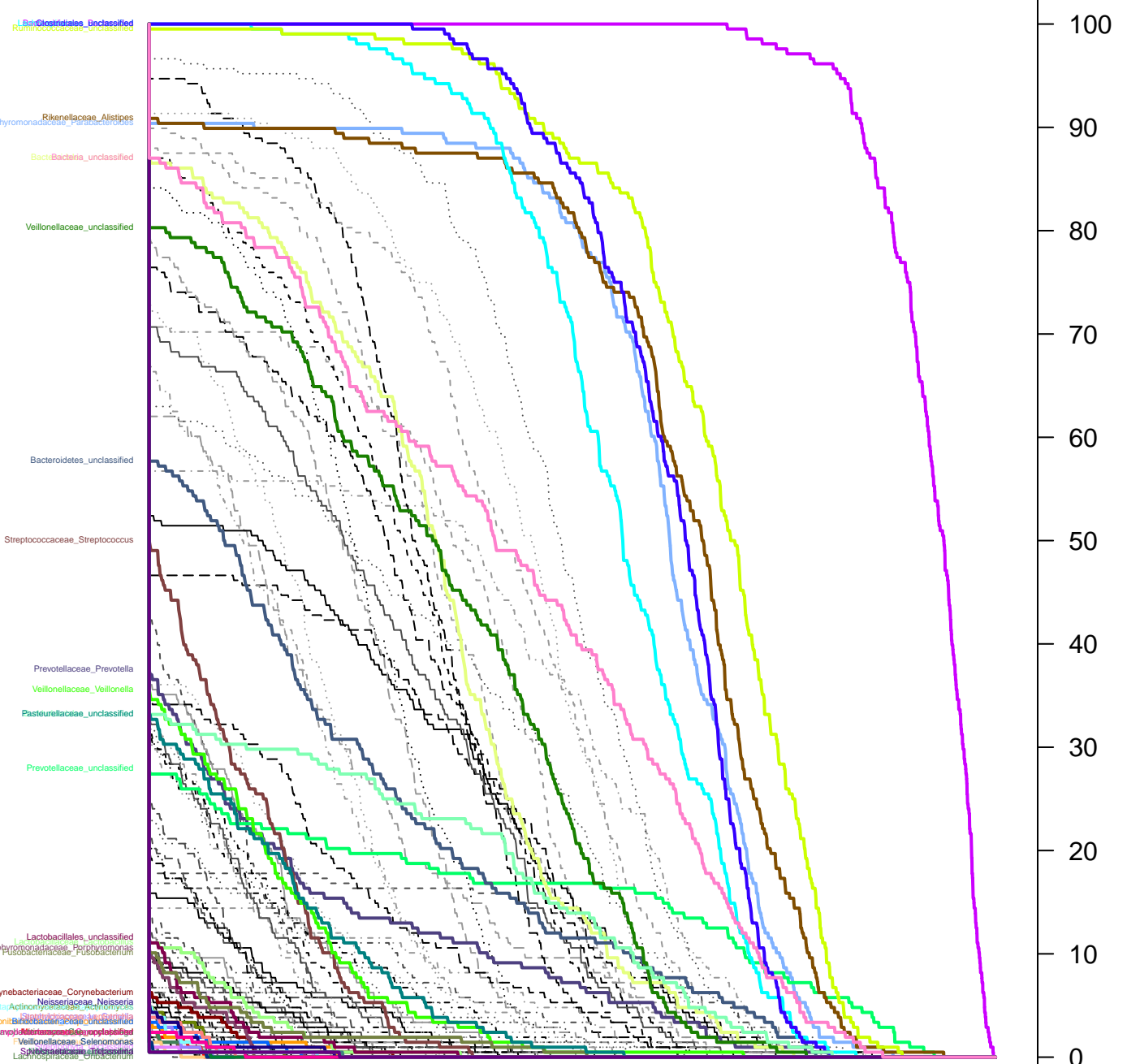
Percent Ubiquity

Bifidobacteriaceae_unclassified
Moraxellaceae_Moraxella
Staphylococcaceae_Staphylococcus
Rikenellaceae_Alistipes
Actinomyetales_unclassified
Lactobacillaceae_Lactobacillus
Porphyromonadaceae_Parabacteroides
Corynebacteriaceae_Corynebacterium
Ruminococcaceae_unclassified
Neisseriaceae_unclassified
Mycobacteriaceae_unclassified
Flavobacteriaceae_unclassified
Prevotellaceae_unclassified
Propionibacteriaceae_unclassified
Lepidoptera
Flavobacteriaceae_Spirillum
Actinomycetales_unclassified
Campylobacteriaceae_Campylobacter
Lactobacillaceae_Spirochaeta
Fusobacteriaceae_Fusobacterium
Porphyromonadaceae_Moraxella
Pasteurellaceae_unclassified
Streptococcaceae_Streptococcus
Prevotellaceae_Prevotella

v35.Taxa.Stool.cdf

Log₁₀(Abundance)

-4 -3 -2 -1 0



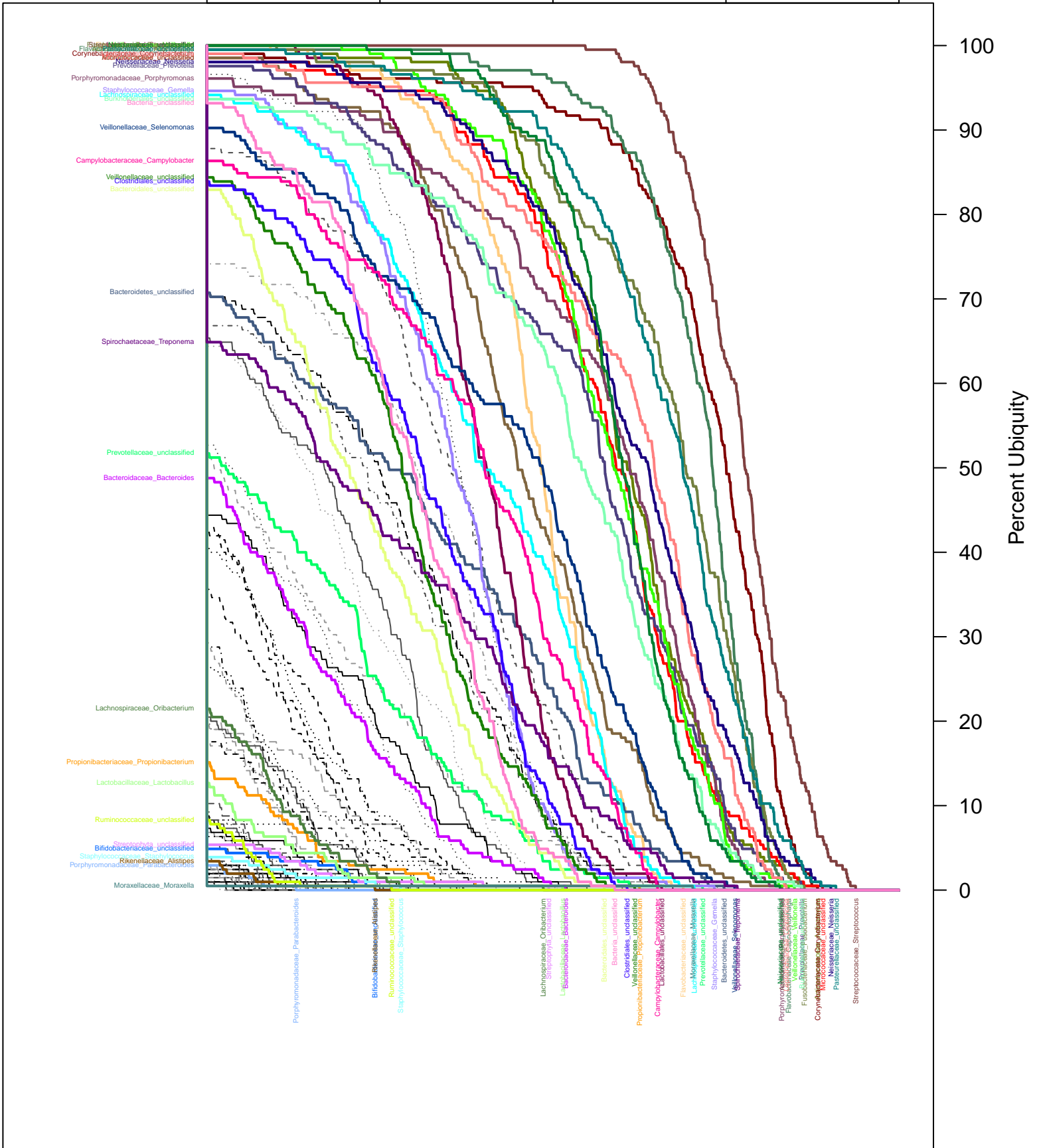
Percent Ubiquity

- Lachnospiraceae_Oribacterium
- Flavobacteriaceae_unclassified
- Mitochondriaceae_unclassified
- Flavobacteriaceae_Capnocytophaga
- Lepidopterae_Lepidoptera
- Comp
- Actinomycetaceae_Actinomycetes
- Porphyromonadaceae_Porphyrionas
- Streptococcaceae_Streptococcus
- Propionibacteriaceae_Neisseria
- Corynebacteriaceae_Corynebacterium
- Streptococcaceae_Streptococcus
- Streptococcaceae_Streptococcus
- Fusobacteriaceae_Fusobacterium
- Pasteurellaceae_unclassified
- Veillonellaceae_Veillonella
- Bacteroidales_unclassified
- Veillonellaceae_unclassified
- Bl
- Propionibacteriaceae_Propionibacterium
- Lachnospiraceae_unclassified
- Bacteroidales_unclassified
- Porphyromonadaceae_Porphyrionas
- Ruminococcaceae_unclassified
- Prevotellaceae_unclassified
- Rikenellaceae_Alistipes
- Bacteroidales_Bacteroides

v35.Taxa.Supragingival_plaque.cdf

Log₁₀(Abundance)

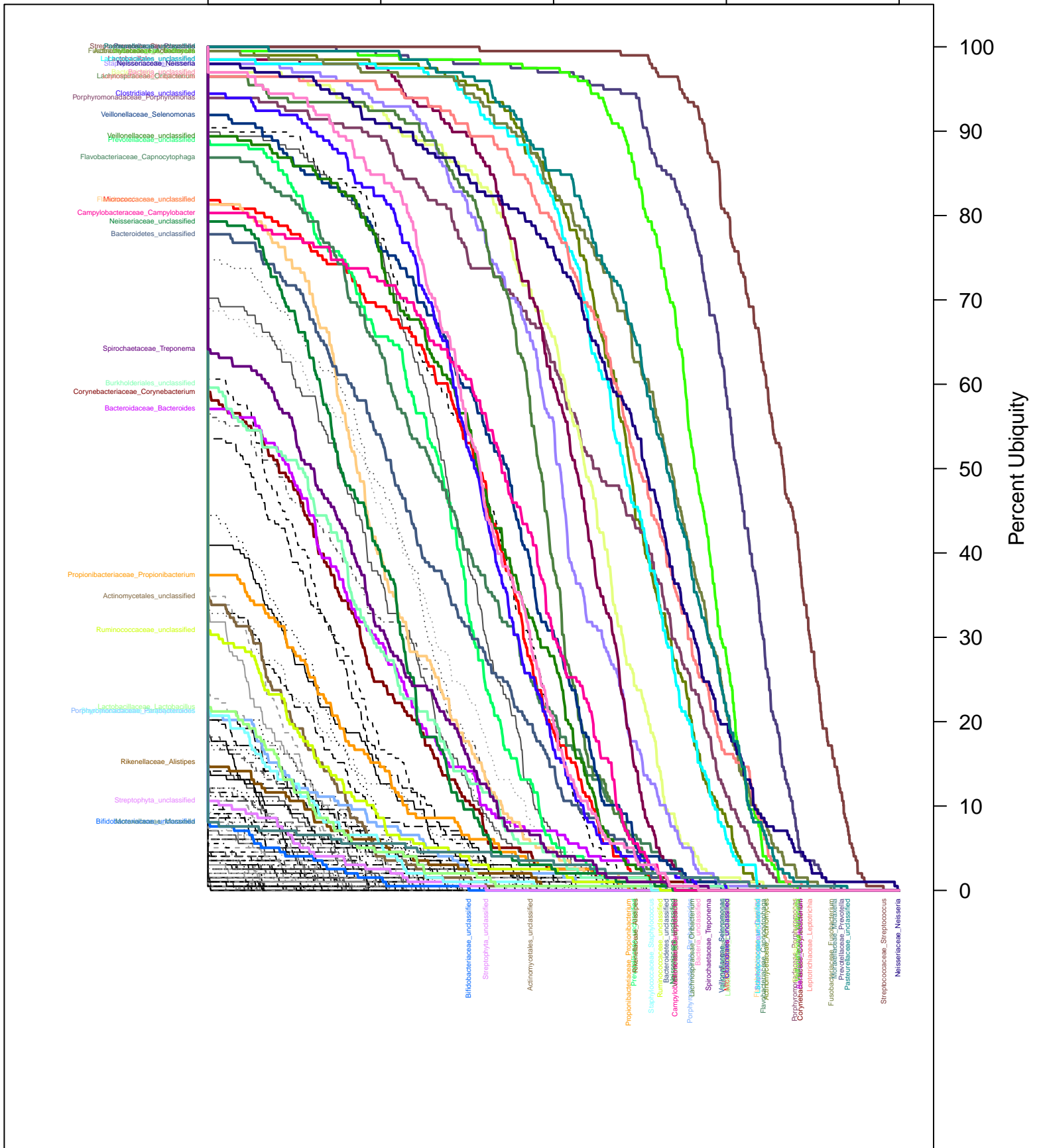
-4 -3 -2 -1 0



v35.Taxa.Throat.cdf

Log₁₀(Abundance)

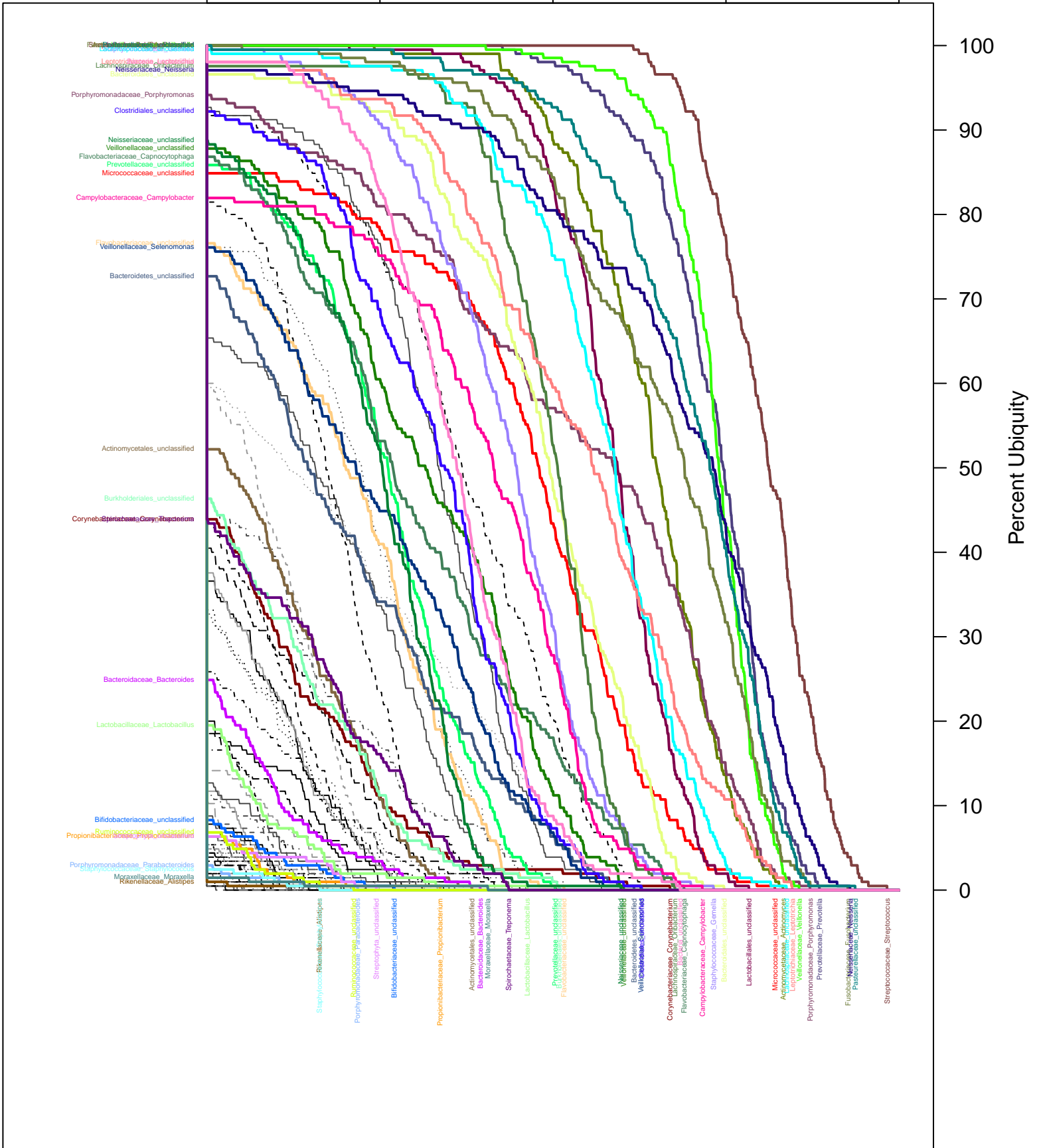
-4 -3 -2 -1 0



v35.Taxa.Tongue_dorsum.cdf

Log₁₀(Abundance)

-4 -3 -2 -1 0



v35.Taxa.Vaginal_introitus.cdf

Log₁₀(Abundance)

-4 -3 -2 -1 0

