

#

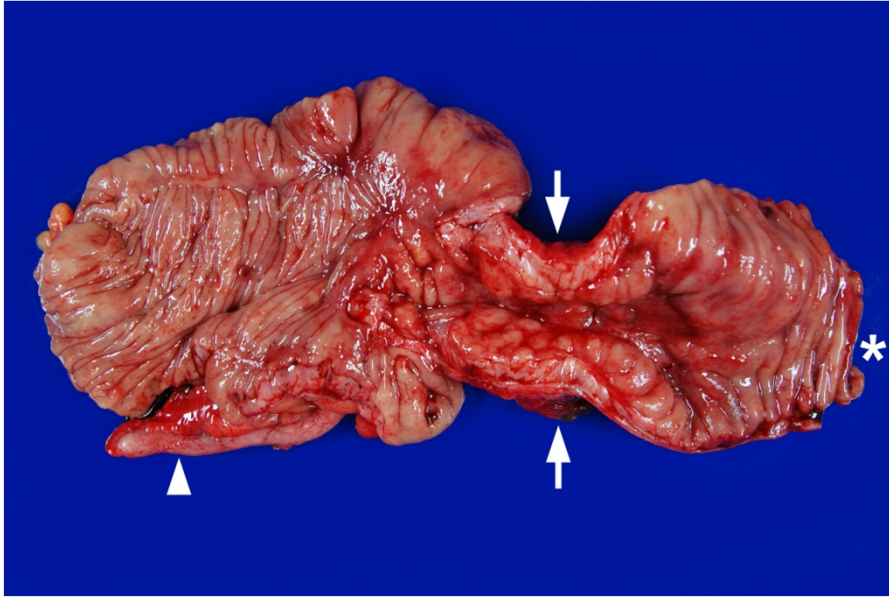
### Supplemental Figure Legends

Figure 1. Isolation of LPMC From Ileo-cecal Resection Specimens. A) LPMC were isolated from the mid-point of the strictured segment, and the proximal ileal margin, of ileo-cecal resection specimens. A representative specimen shows a stricture (arrows) at the ileocecal valve region. The mucosa in the stricture appears cobblestoned and the wall is extremely thick. Asterisk indicates proximal margin and arrowhead points to the vermiform appendix. . B) The CDHIS was determined for H&E stained slides prepared from the stricture and proximal margin and is shown as the mean(SEM), \*\*\*p=0.0001 by t test, n=16.

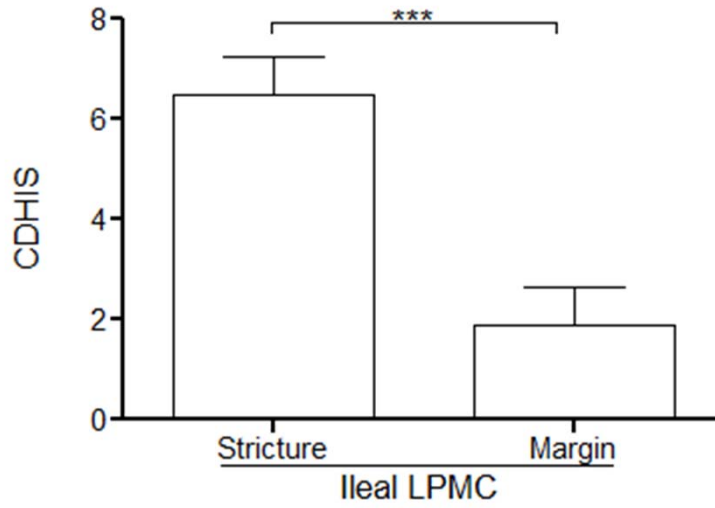
Figure 2. Granulocyte CD116 Abundance in Healthy Controls and CD Patients. Cell surface abundance of the GM-CSF receptor CD116 was measured by flow cytometry in healthy controls (HC) and CD patients. A) Representative granulocyte gate and results for CD116 for CD and HC are shown. Data are shown as the mean(SEM) for the frequency of granulocytes expressing CD116 and the CD116 MFI on granulocytes, n=11 for HC (healthy controls) and n=39 for CD.

Suppl. Figure 1

A)

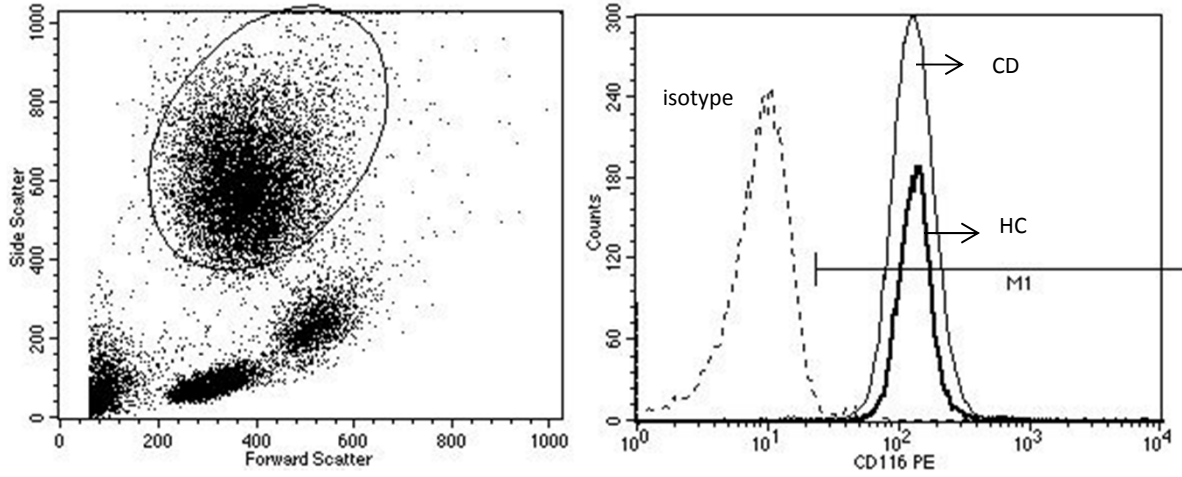


B)

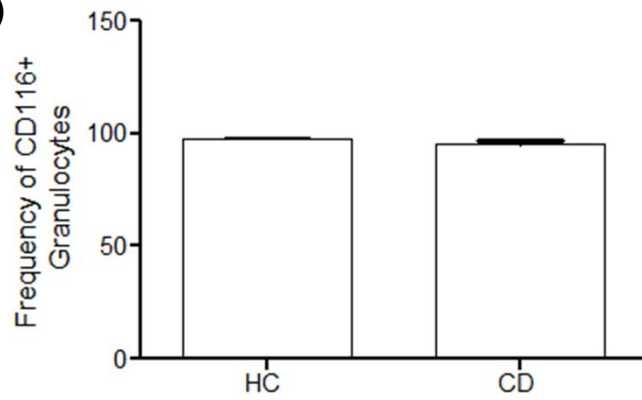


# Suppl. Figure 2

**A)**



**B)**



**C)**

