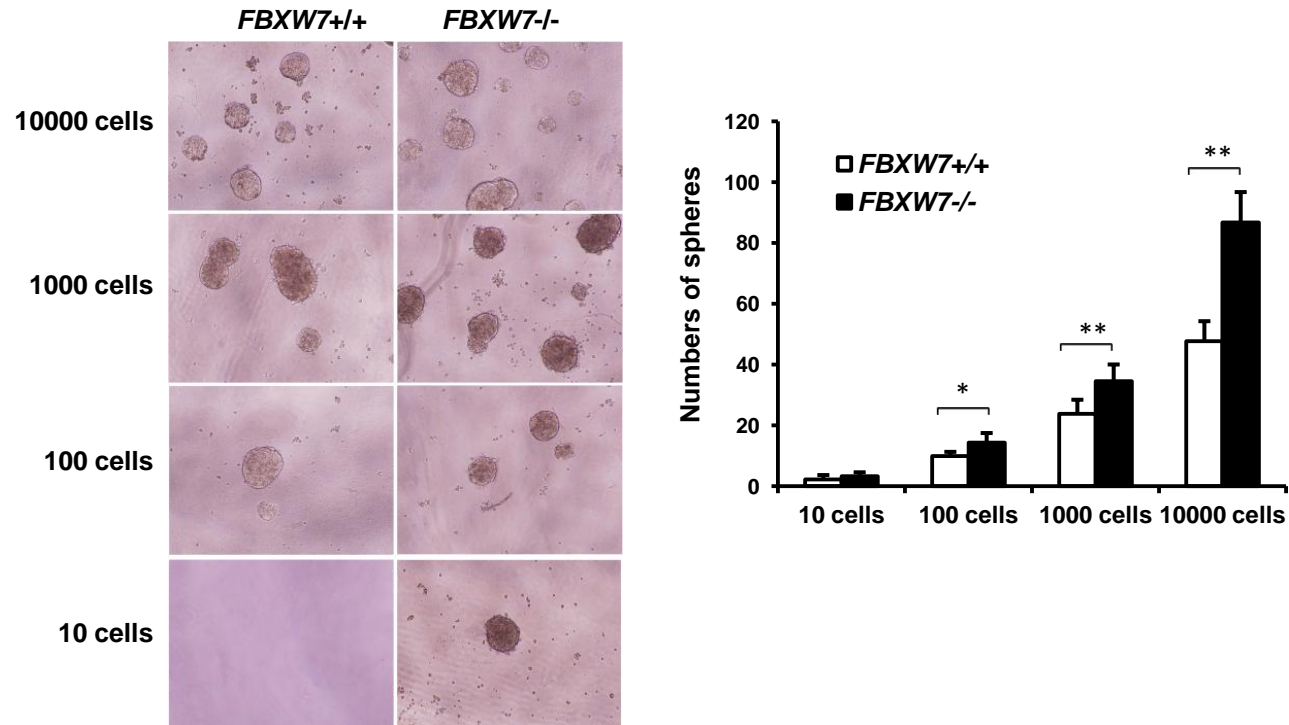
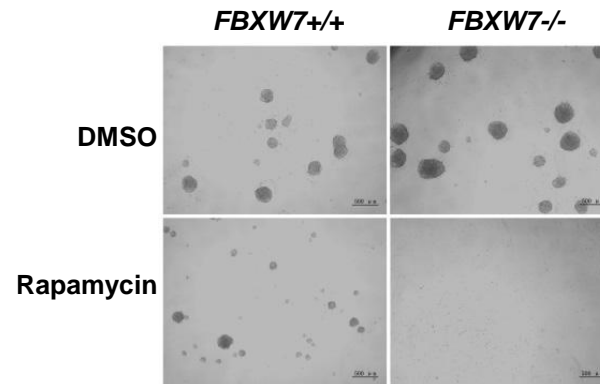


Supplemental Figure 1. Depletion of *FBXW7* in DLD-1 cells leads to epithelial-mesenchymal transition. **(A)** Morphology comparison of DLD-1 *FBXW7*^{-/-} and its control cells under bright field. **(B)** Western blot analysis of indicated EMT marker in DLD-1 *FBXW7*^{-/-} and its control cells.



Supplemental Figure 2. Number of spheres was quantified using sphere formation assay for DLD-1 *FBXW7*^{-/-} and its control cells; left panels showed representative spheres. Data were presented as means \pm Standard deviation from three independent experiments in triplicates. * $P < 0.05$ and ** $P < 0.01$ were obtained from Student's t-test.



Supplemental Figure 3. Representative sphere formation of HCT116 *FBXW7*^{-/-} and its control cells treated with DMSO or rapamycin.