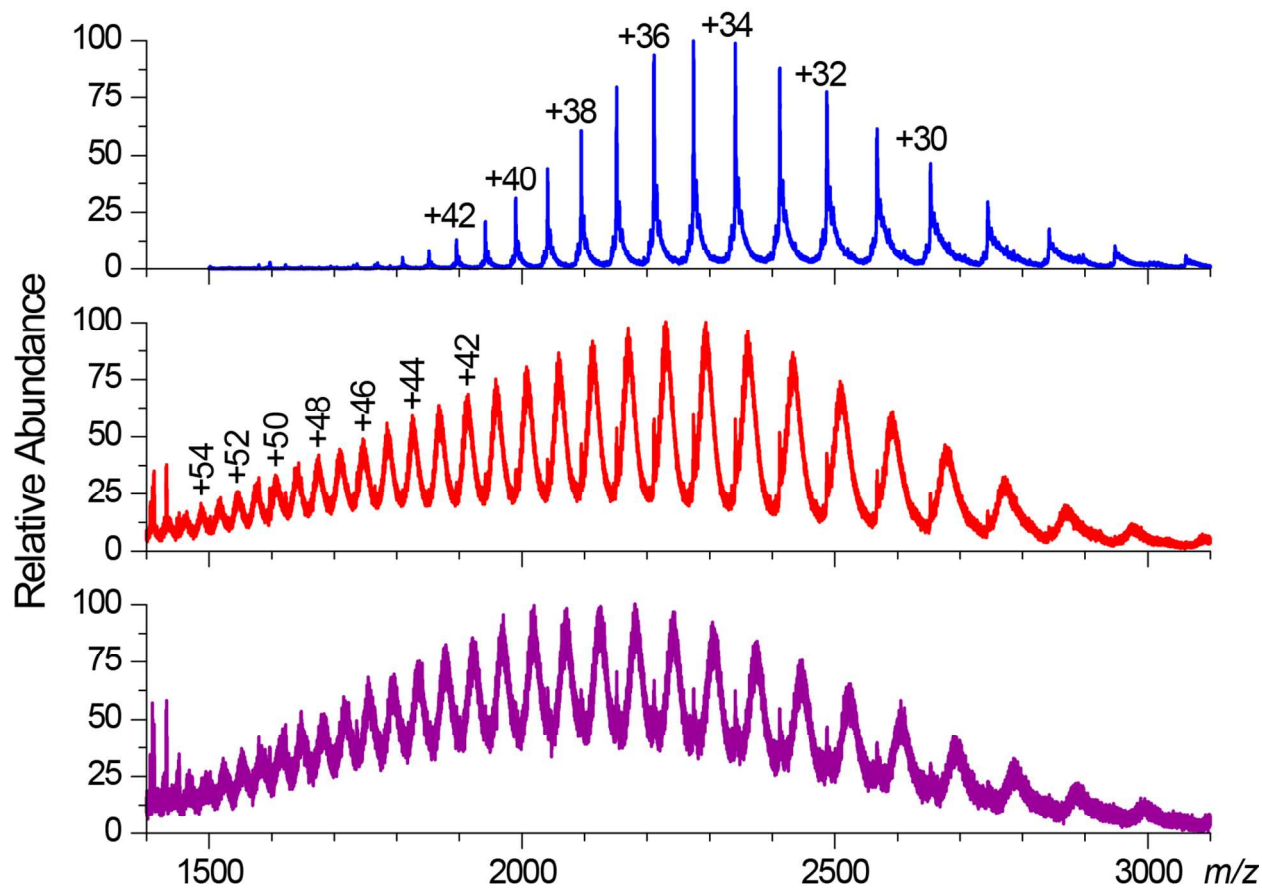
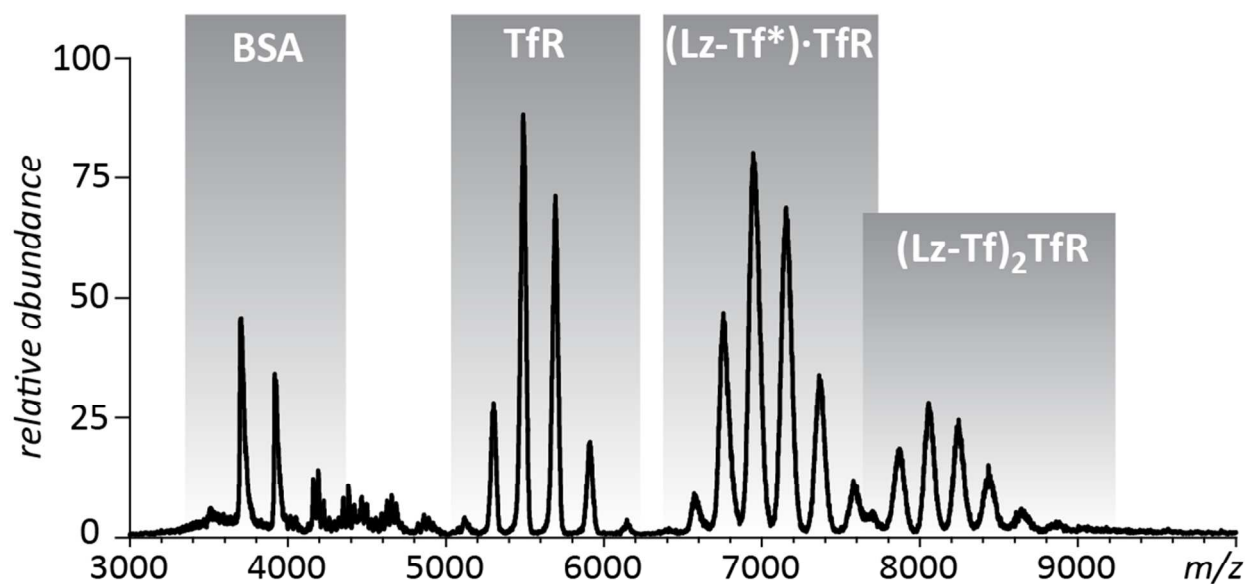


SUPPLEMENTARY MATERIAL



Nguyen, et al. Supplementary Material, **Figure S1**

Figure S1: ESI mass spectra of intact Tf and Tf modified with the Traut's reagent acquired under denaturing conditions. The three traces correspond to an unmodified Tf (blue), 1:10 (red) and 1:20 (purple) concentration ratio of Tf to Traut's reagent in the reaction. The higher charge state peaks of activated Tf compare to control Tf indicate further unfolding due to the reduction of intramolecular disulfide bonds.



Nguyen, et al. Supplementary Material, **Figure S2**

Figure S2: ESI mass spectrum of the mixture of Lz-Tf conjugate (produced with SM(PEG)₁₂ as a linker) and TfR acquired under near-native conditions. BSA that was present as an impurity in the TfR sample also served as a negative control to ensure specificity of binding for the Lz-Tf conjugate.