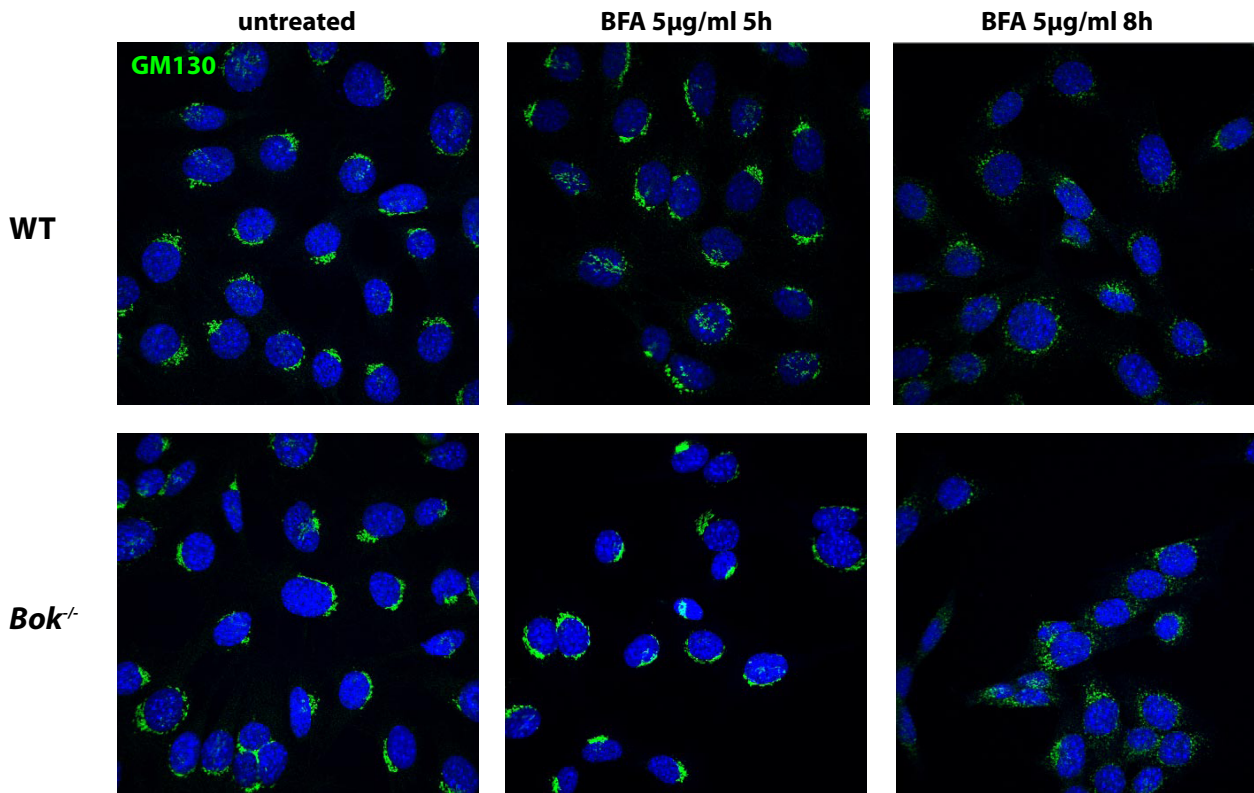


SV40 MEF



Supplementary Figure S5. Brefeldin A-induced Golgi fragmentation is independent of BOK.

Confocal scanning micrographs of SV40 immortalized WT and *Bok*^{-/-} MEF treated for the indicated times with brefeldin A (BFA, 5 µg/mL) and stained with an antibody against the cis-Golgi matrix protein GM130 (green). Nuclear DNA was stained with Hoechst 33342 dye (blue).