

Armillifer armillatus Pentastomiasis in African Immigrant, Germany

Technical Appendix

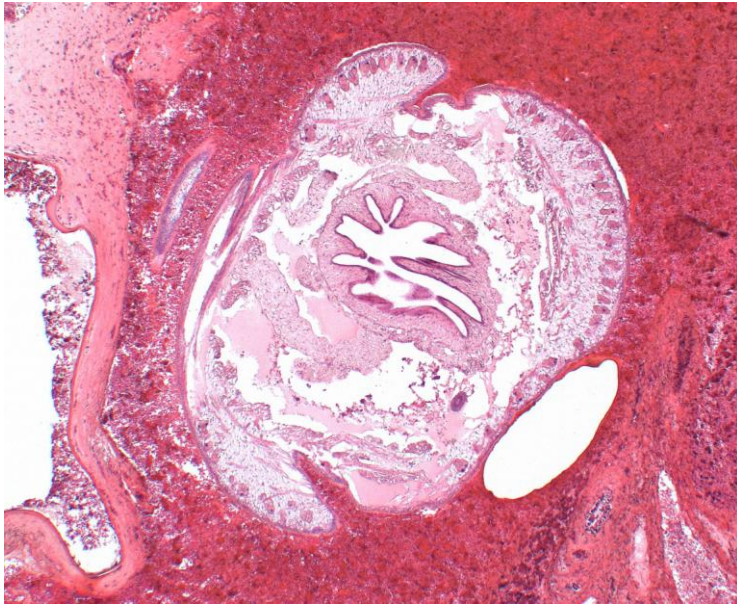


Figure. Transverse section of an *Armillifer armillatus* larva from the liver of the patient (immigrant) from Togo. Typical for pentastomid lesions, the parenchyma shows focal hemorrhage around the parasite and no inflammatory cellular reaction (1). There is also focal destruction of the trabecular liver parenchyma. Subcuticular gland cells of the parasite are visible, and the intestine is clearly discernable in the center (hematoxylin and eosin stain, original magnification $\times 20$).

Reference

1. Tappe D, Büttner DW. Diagnosis of human visceral pentastomiasis. PLoS Negl Trop Dis. 2009;3:e320. PubMed <http://dx.doi.org/10.1371/journal.pntd.0000320>