

Supplementary Figure S2.

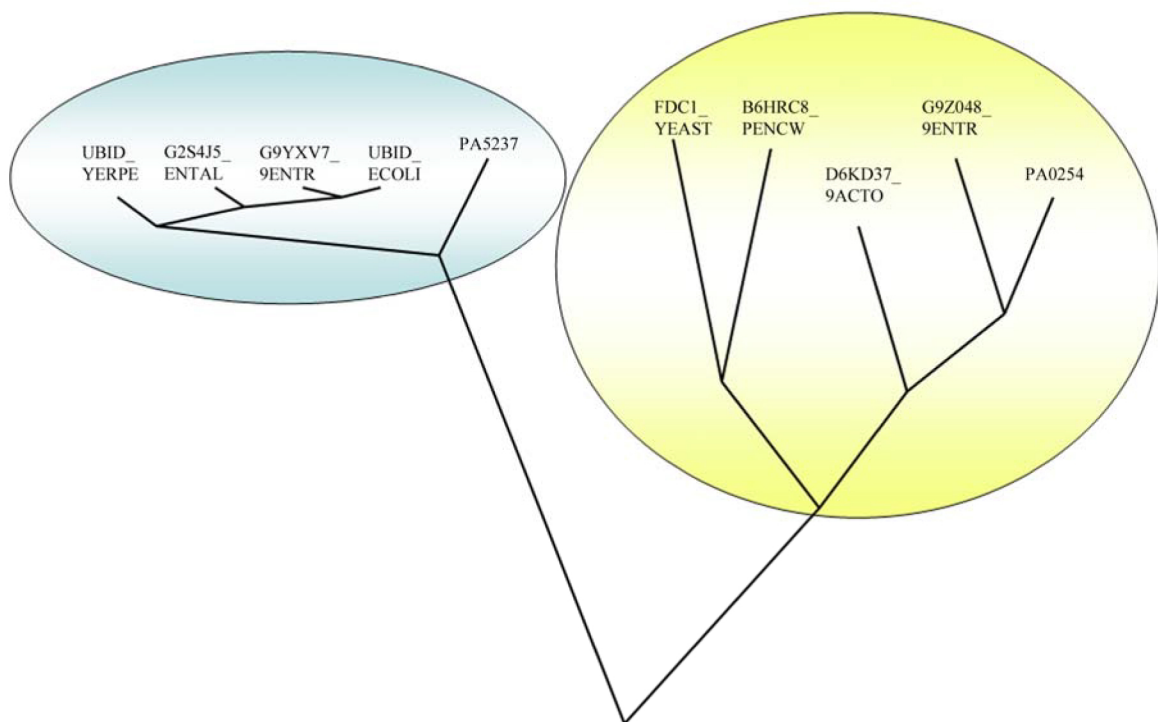
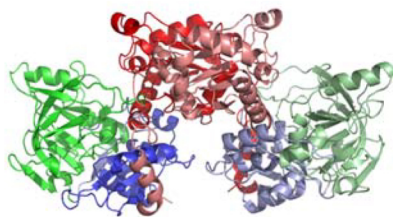


Figure S2. Phylogenetic tree generated at www.cbrg.ethz.ch/services/PhylogeneticTree based on the sequences of UbiD-like proteins used in the alignment in Figure 2. The members of this sequence family are clustered in two groups, one harboring the hexameric *bona fide* UbiD-like enzymes (to the left) exemplified by UbiD from *E. coli* (PDB code 2IDB). The second group comprises UbiD2-like proteins, represented by dimeric PA0254 described in this paper.