

Fig. S1: Expression of Clp1 and Clp1 mutants. *clp1*⁺, *clp1NLSmut*, and *clp1(1-500)* were expressed from the *clp1*⁺ endogenous locus and C-terminally tagged with GFP. *GFP-clp1(476-537)* and *GFP* were expressed in wildtype cells from the *nmt81* inducible promoter. These proteins were immunoprecipitated from cell lysates and then analyzed by immunoblot analysis with anti-GFP.

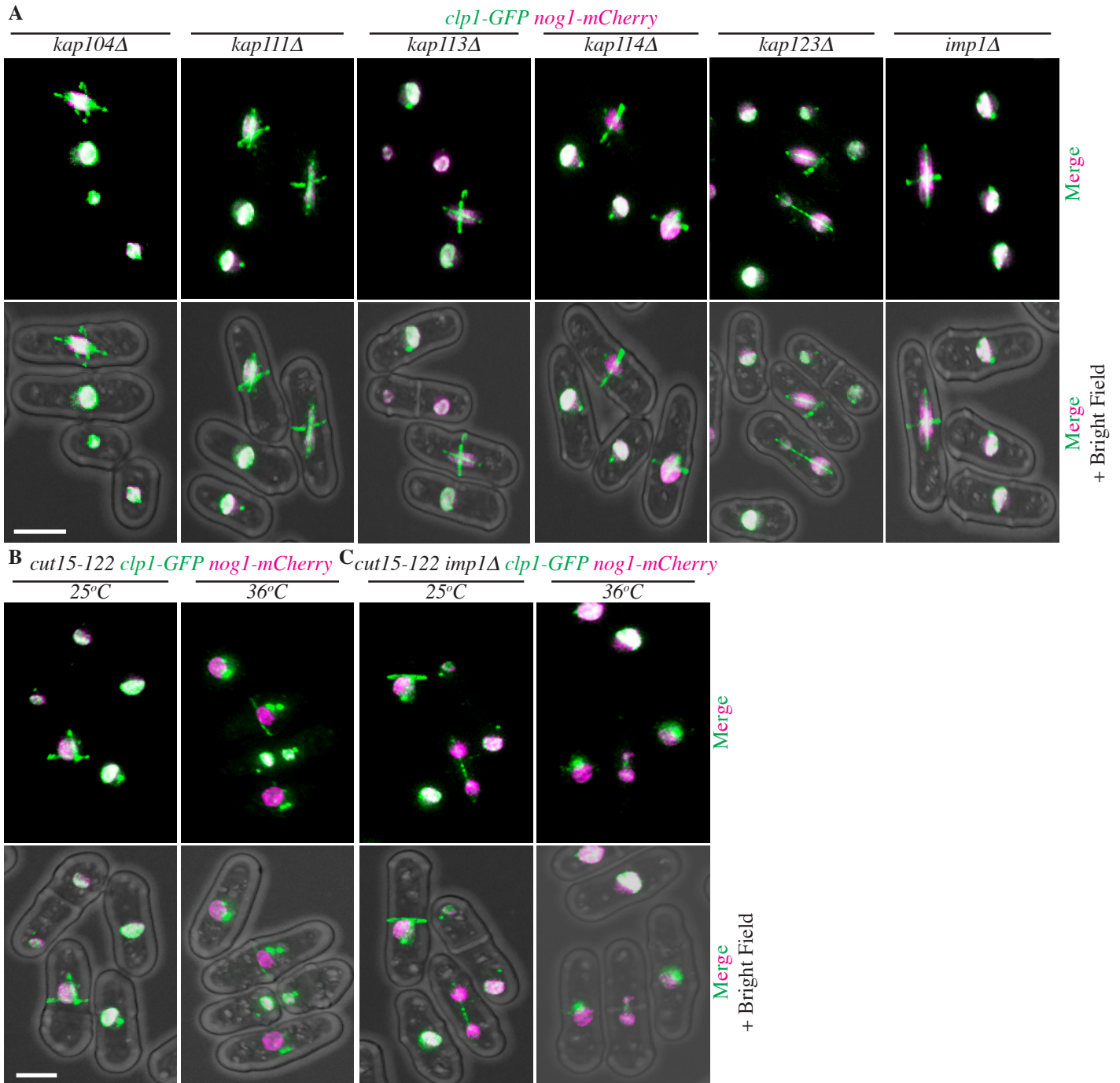


Fig. S2. Clp1 is imported normally to the nucleus in the absence of 8 of 9 *S. pombe* importins. (A) Live cell images of the indicated importin deletion strains containing *clp1-GFP nog1-mCherry* (Nog1 is a nucleolar marker (see below Matsuyama et al., 2006)). (B) Live cell images of *cut15-122 clp1-GFP nog1-mCherry* cells grown at either 25°C or 36°C. (C) same as (B) but with *cut15-122 imp1Δ clp1-GFP nog1-mCherry* cells.

Matsuyama, A., Arai, R., Yashiroda, Y., Shirai, A., Kamata, A., Sekido, S., Kobayashi, Y., Hashimoto, A., Hamamoto, M., Hiraoka, Y., et al. (2006). ORFeome cloning and global analysis of protein localization in the fission yeast *Schizosaccharomyces pombe*. *Nat Biotechnol* 24, 841-847.

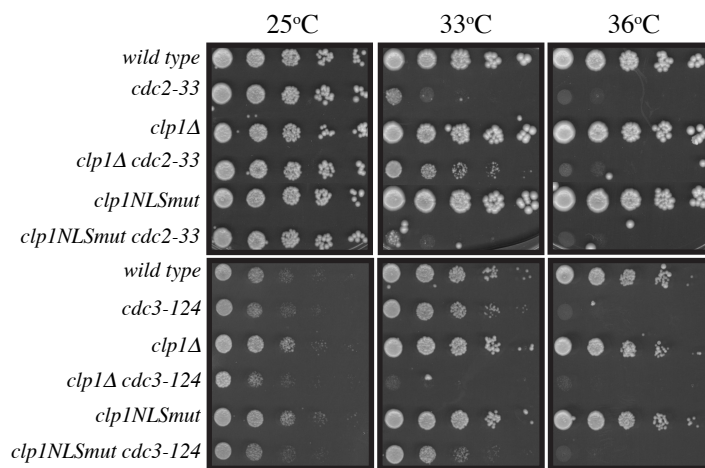


Fig. S3: Clp1NLSmut is a functional mutant. The indicated strains were grown to mid-log phase at 25°C in YE and spotted in 10-fold serial dilutions on YE plates and incubated at the indicated temperatures.