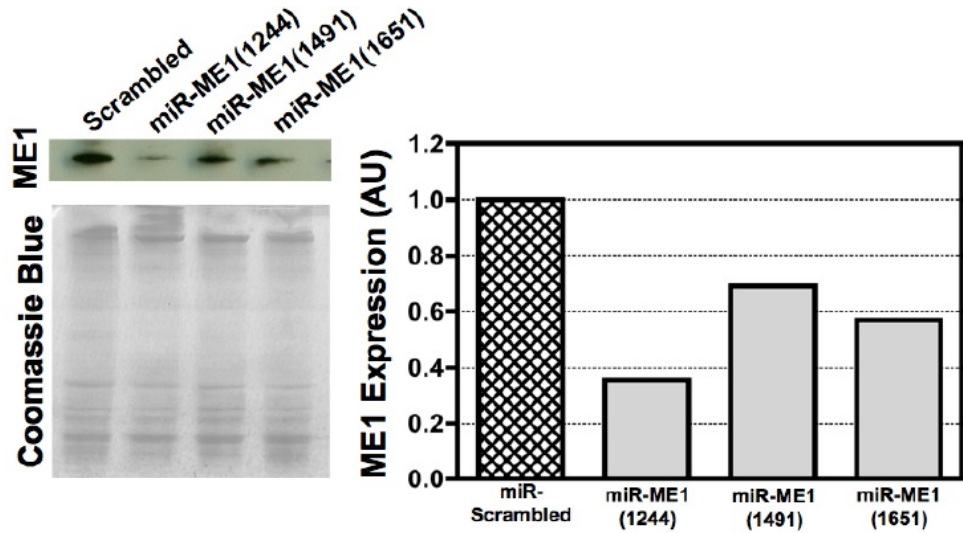


## SUPPLEMENTAL MATERIAL



**Fig. (1).** Preliminary assessment of ME1 protein expression was made in rat neonatal cardiomyocytes following delivery of three different Adv.miR-ME1 sequences or the Adv.miR-scrambled control. The Adv.miR-ME1 resulting in the greatest knockdown of protein expression (#1244) in the isolated cardiomyocytes was chosen for subsequent *in vivo* Adv.miR-ME1 experiments. (Gels were stained with Coomassie blue dye to verify equal protein loading).