

## Supplementary Appendix

This appendix has been provided by the authors to give readers additional information about their work.

Supplement to: Chan PS, Nallamothu BK, Krumholz HM, et al. Long-term outcomes in elderly survivors of in-hospital cardiac arrest. *N Engl J Med* 2013;368:1019-26. DOI: [10.1056/NEJMoa1200657](https://doi.org/10.1056/NEJMoa1200657)

## Supplementary Appendix

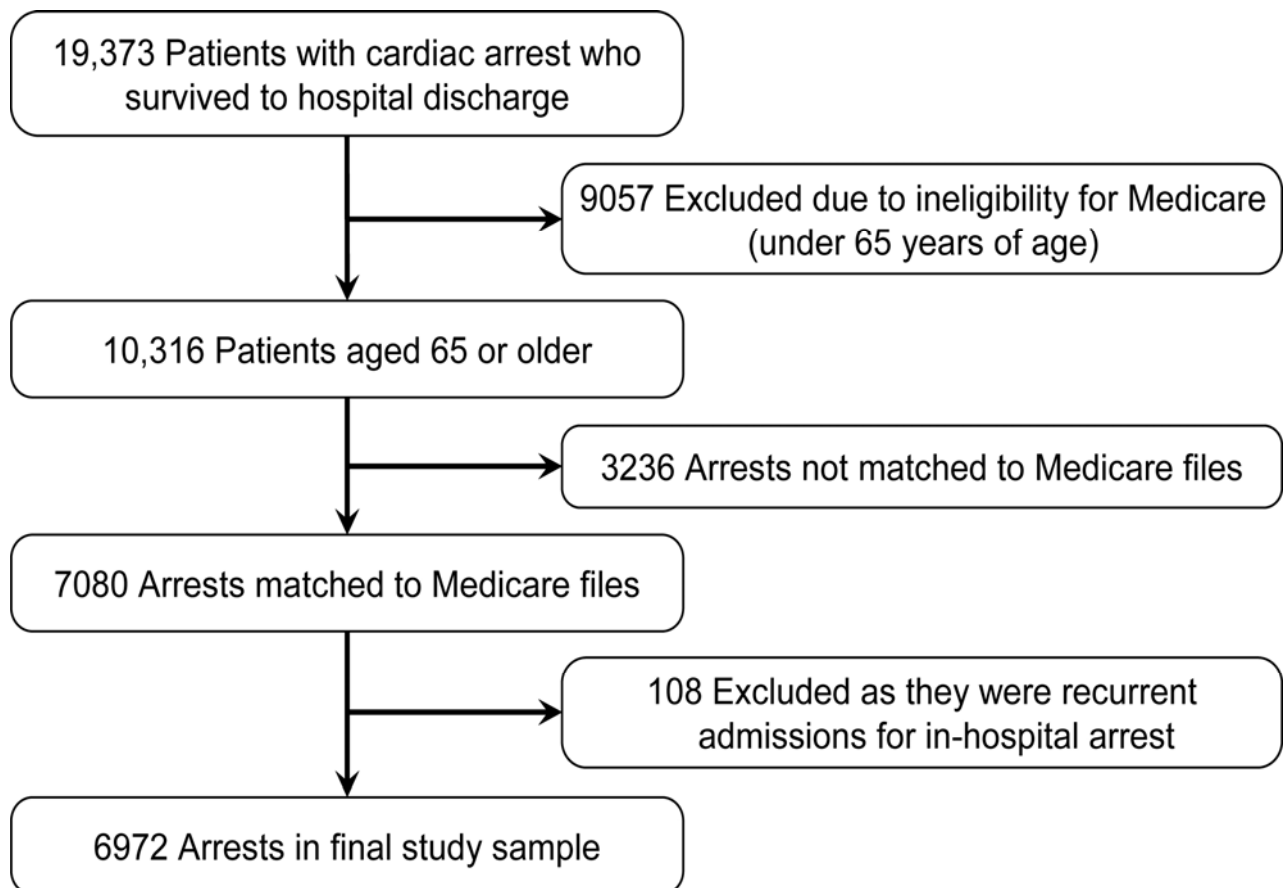
1.	American Heart Association Get With the Guidelines-Resuscitation (formerly the National Registry of Cardiopulmonary Resuscitation) Investigators.....	2
2.	Figure S1. Derivation of the Study Cohort.....	3
3.	Figure S2. Trends in 1-Year Risk-Adjusted Survival by Cardiac Arrest Rhythm.....	4
4.	Figure S3. Kaplan-Meier Estimates of Freedom from Readmission Among Survivors of In-Hospital Cardiac Arrest, Overall and by Discharge Neurological Status (CPC Score)...	6
5.	Table S1. Baseline Characteristics of Patients Matched and Not Matched to Medicare Files.....	7
6.	Table S2. Discharge Destination by Patient Subgroups.....	9
7.	Table S3. Adjusted Associations between Patient Characteristics and 1-Year Survival, Full Model Results.....	10
8.	Table S4. Temporal Trends in 1-Year Unadjusted Survival, Stratified by Rhythm Type.....	11
9.	Table S5. Risk-Adjusted Rates of 2-Year Survival for Pre-Specified Subgroups.....	12
10.	Table S6. Adjusted Associations between Selected Patient Characteristics and 2-Year Readmission.....	13

**American Heart Association Get With the Guidelines-Resuscitation (formerly the National Registry of Cardiopulmonary Resuscitation) Investigators**

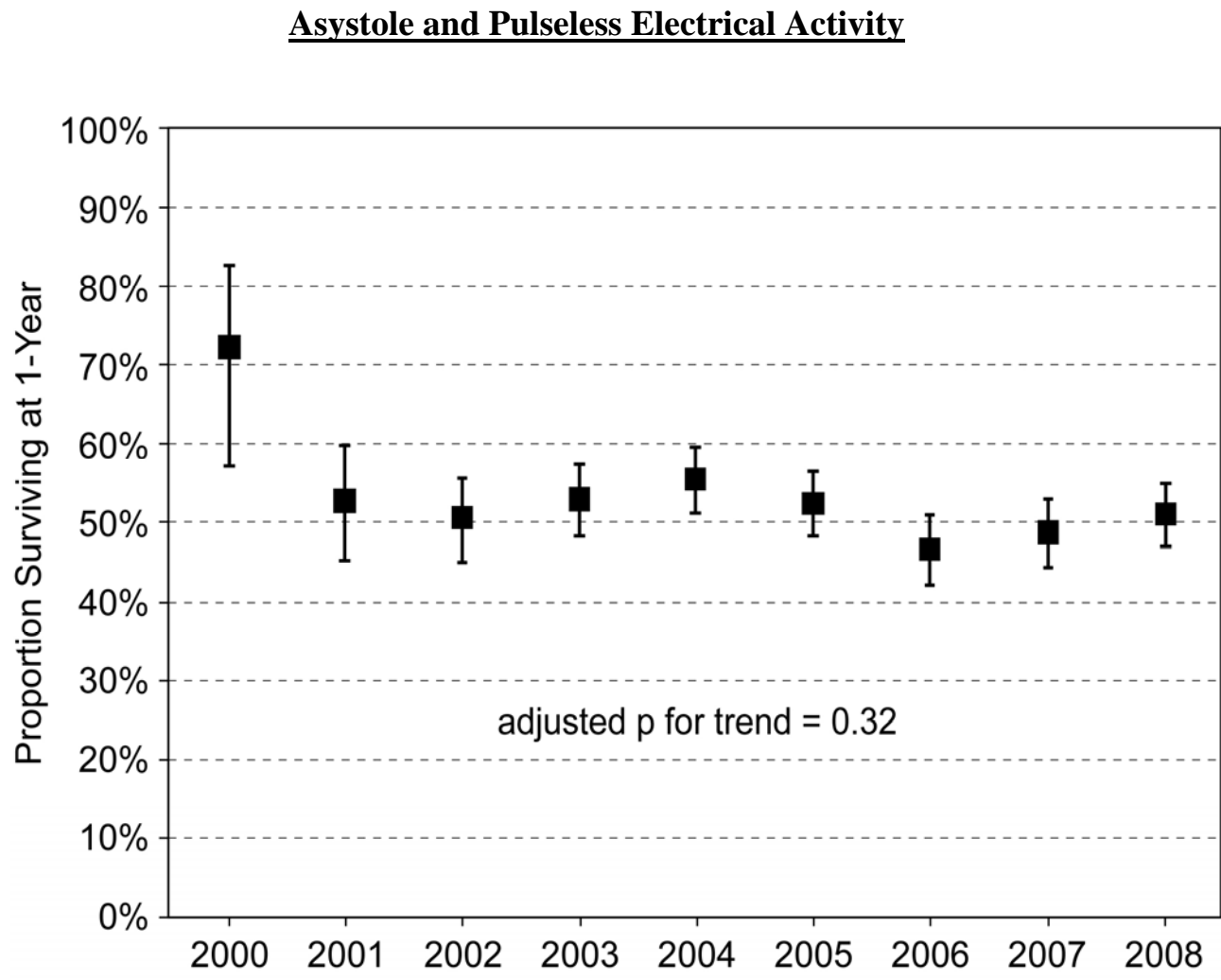
Besides the author Paul S. Chan, MD, MSc, members of GWTG-Resuscitation include:

Robert A. Berg, MD, Children's Hospital of Philadelphia; Emilie Allen, MSN, RN, Parkland Health & Hospital System; Michael W. Donnino, MD, Beth Israel Deaconess Medical Center; Dana P. Edelson, MD, MS, University of Chicago Medical Center; Kathy Duncan, Institute for Healthcare Improvement; Brian Eigel, PhD and Lana Gent, PhD, American Heart Association; Robert T. Faillace, MD, St. Joseph's Regional Medical Center; Romergryko G. Geocadin, MD, Johns Hopkins School of Medicine; Elizabeth A. Hunt, MD, MPH, PhD, Johns Hopkins Medicine Simulation Center; Lynda Knight, RN, Lucile Packard Children's Hospital at Stanford; Kenneth LaBresh, MD, RTI International; Mary E. Mancini, RN, PhD, University of Texas at Arlington; Vinay M. Nadkarni, MD, University of Pennsylvania School of Medicine; Graham Nichol, MD, MPH and Samuel A. Warren, MD, University of Washington; Mary Ann Peberdy, MD and Joseph P. Ornato, MD, Virginia Commonwealth University Health System; Comilla Sasson, MD, MS, University of Colorado; and Mindy Smyth, MSN, RN.

**Figure S1.** Derivation of the Study Cohort

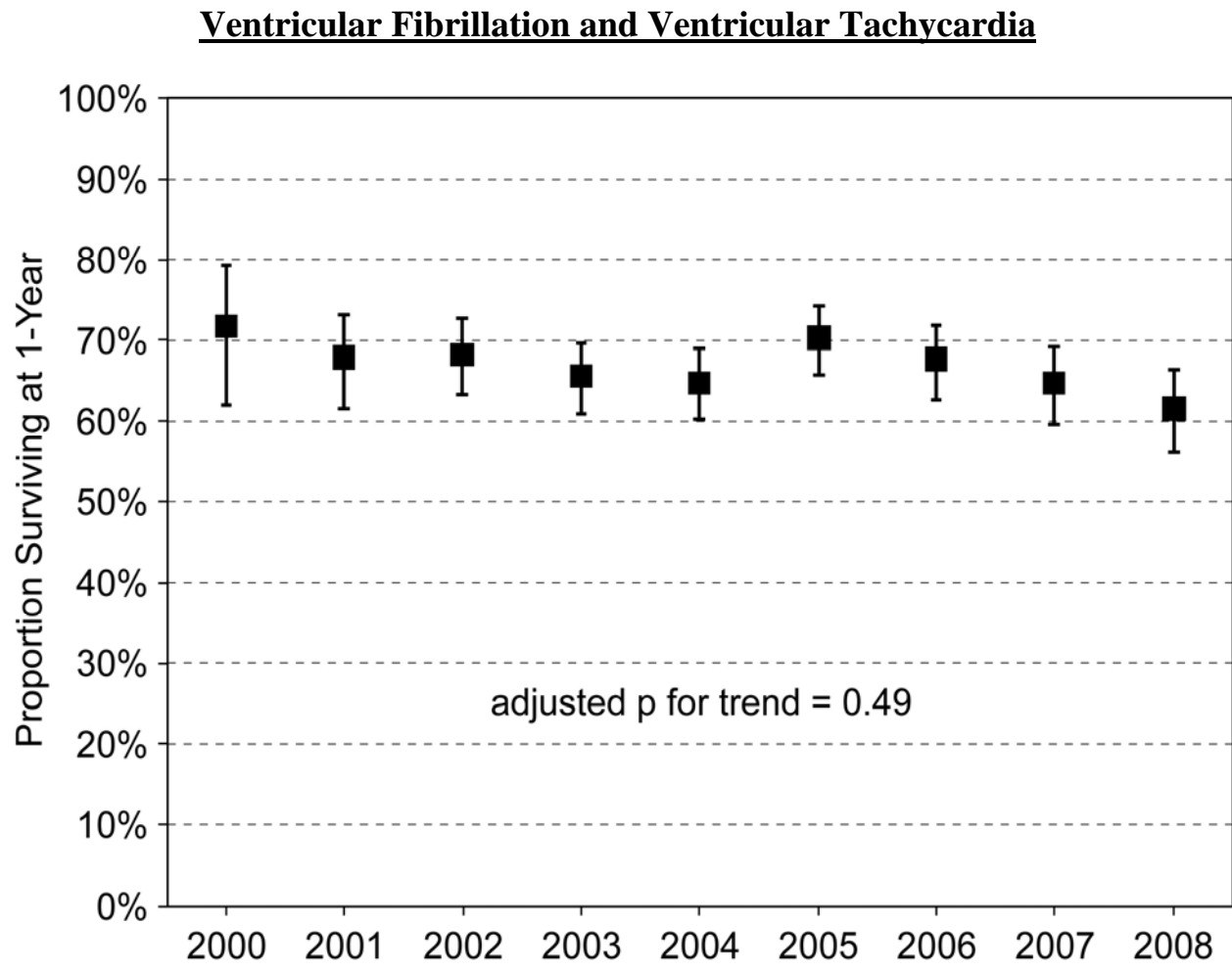


**Figure S2.** Trends in 1-Year Risk-Adjusted Survival by Cardiac Arrest Rhythm.\* No significant survival trend was observed for either rhythm group.



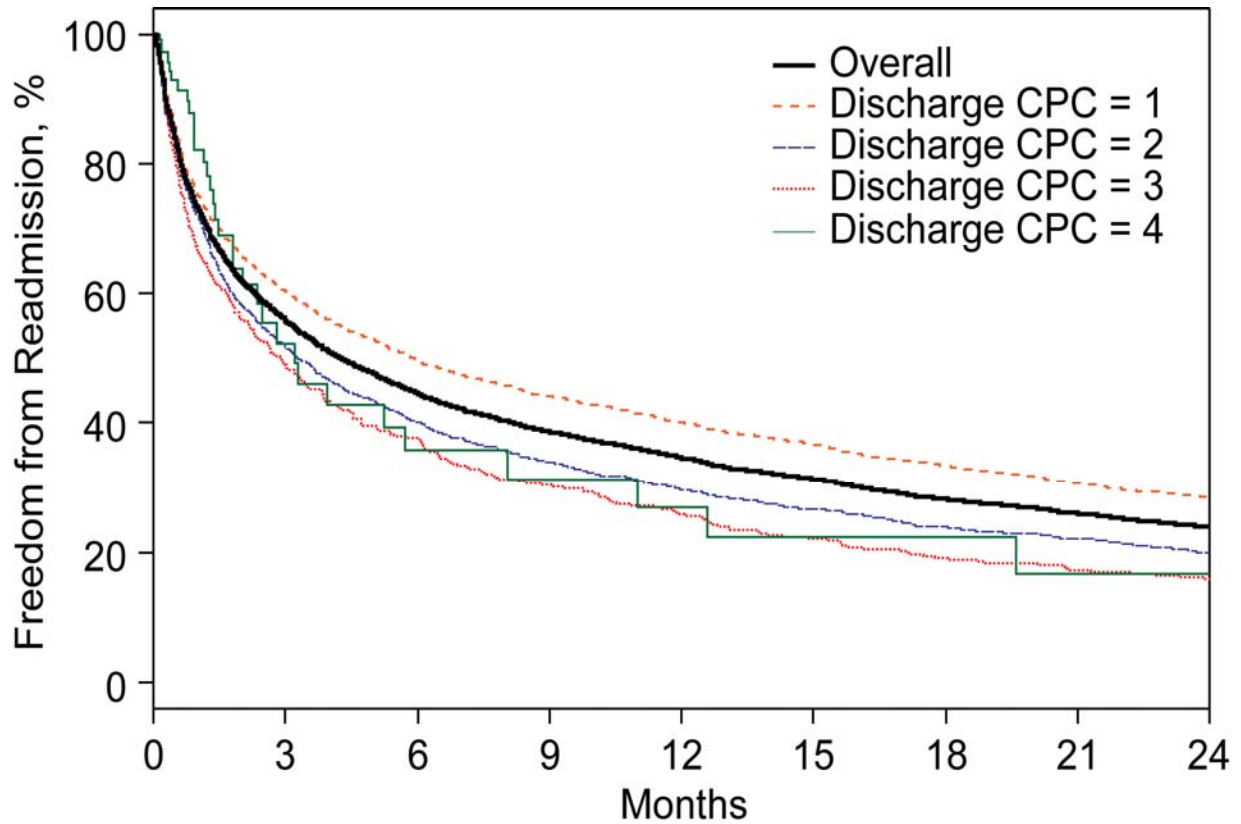
\* Multivariable hierarchical model adjusted for hospital site and the variables listed in Table S1.

Figure S2 (continued).



\* Multivariable hierarchical model adjusted for hospital site and the variables listed in Table S1.

**Figure S3.** Kaplan-Meier Estimates of Freedom from Readmission Among Survivors of In-Hospital Cardiac Arrest, Overall and by Discharge Neurological Status (CPC Score).



Time (Months)	1	3	6	12	18	24
Overall, %	73.3	55.6	44.4	34.4	28.1	23.8
Discharge CPC = 1	75.2	60.0	49.4	39.9	33.2	28.4
Discharge CPC = 2	72.0	51.4	39.9	29.5	23.7	19.8
Discharge CPC = 3	66.6	48.5	36.9	25.7	18.9	15.7
Discharge CPC = 4	82.3	52.4	35.7	26.8	22.3	16.8

**Table S1.** Baseline Characteristics For Patients Matched and Not Matched to Medicare Files

Characteristic	Patients Matched (n = 6972)	Patients Not Matched (n = 3236)	Standardized Difference*
Demographic characteristics			
Age — yr	75.8 ± 7.0	75.2 ± 7.0	9.1
Male sex, no. (%)	3872 (55.5)	1890 (58.4)	5.8
Race, no. (%)†			
White	5634 (85.7)	2396 (82.8)	Reference
Black	778 (11.8)	365 (12.6)	2.4
Other	164 (2.5)	132 (4.6)	11.2
Cardiac arrest characteristics, no. (%)			
After hours (11:00 pm–6:59 am)	1763 (25.3)	837 (26.3)	1.4
Weekend	1908 (27.4)	893 (27.6)	0.5
Hospital-wide response activated	5432 (77.9)	2556 (79.0)	2.6
Use of automated external defibrillator	706 (10.1)	340 (10.5)	1.3
Initial cardiac arrest rhythm			
Asystole	1707 (24.5)	865 (26.7)	Reference
Pulseless electrical activity	2031 (29.1)	958 (29.6)	1.0
Pulseless ventricular tachycardia	1109 (15.9)	521 (16.1)	0.5
Ventricular fibrillation	2125 (30.5)	892 (27.6)	6.4
CPC score at discharge, no. (%)‡			
1 (mild to no neurological disability)	2943 (48.1)	1277 (46.5)	Reference
2 (moderate neurological disability)	2097 (34.3)	902 (32.9)	3.0
≥3 (severe neurological disability or coma)	1074 (17.6)	565 (20.6)	7.7
Preexisting conditions, no. (%)			
Acute stroke	249 (3.6)	115 (3.6)	0.1
Baseline depression in CNS function	736 (10.6)	293 (9.1)	5.1
Diabetes mellitus	2262 (32.4)	1043 (32.2)	0.5
Heart failure during admission	1625 (23.3)	686 (21.2)	5.1
Heart failure prior to admission	1848 (26.5)	800 (24.7)	4.1
Hepatic insufficiency	143 (2.1)	78 (2.4)	2.4
Hypotension	1313 (18.8)	588 (18.2)	1.7
Major trauma	113 (1.6)	62 (1.9)	2.2
Metabolic or electrolyte abnormality	770 (11.0)	364 (11.2)	0.7
Metastatic or hematologic malignancy	518 (7.4)	222 (6.9)	2.2
Myocardial infarction during admission	1897 (27.2)	842 (26.0)	2.7
Myocardial infarction prior to admission	1805 (25.9)	742 (22.9)	6.9
Pneumonia	725 (10.4)	291 (9.0)	4.8
Renal insufficiency	1836 (26.3)	743 (23.0)	7.8
Respiratory insufficiency	2368 (34.0)	1038 (32.1)	4.0
Septicemia	473 (6.8)	213 (6.6)	0.8
Interventions in place, no. (%)			
Mechanical ventilation	1246 (17.9)	564 (17.4)	1.2
Dialysis	136 (2.0)	58 (1.8)	1.3
Preexisting implantable cardioverter-defibrillator	109 (1.6)	51 (1.6)	0.0

Abbreviations: CNS, central nervous system; and CPC, Cerebral Performance Category.

\* Due to the large sample size, a standardized difference of >10 was used to denote significant differences between groups



† Race was missing for 396 patients who matched and 343 patients who did not match.

‡ CPC score was missing for 858 patients who matched and 492 patients who did not match.

**Table S2.** Discharge Destination by Patient Subgroups

		<u>HOME</u>		<u>INPATIENT</u>			
		Self-care	Home Health	Skilled Nursing	Rehabilitation	Other	Hospice
<b>Age</b>	65 to 74	31.9%	14.8%	20.4%	28.6%	0.6%	3.7%
	75 to 84	21.7%	14.0%	32.3%	26.6%	0.4%	5.0%
	≥ 85	15.8%	13.6%	41.6%	20.6%	0.4%	8.0%
<b>Sex</b>	Men	28.3%	14.3%	25.3%	27.2%	0.6%	4.4%
	Women	22.4%	14.4%	31.4%	26.3%	0.3%	5.3%
<b>Race</b>	White	26.7%	14.3%	27.9%	26.1%	0.4%	4.7%
	Black	18.9%	12.7%	31.8%	32.0%	0.3%	4.4%
	Other	21.3%	18.9%	20.7%	31.1%	0.6%	7.3%
<b>Initial cardiac arrest rhythm</b>	Asystole	20.6%	12.9%	30.7%	29.9%	0.6%	5.3%
	Pulseless Electrical Activity	17.6%	13.9%	31.9%	29.6%	0.5%	6.4%
	Ventricular Fibrillation	35.0%	14.7%	23.6%	23.6%	0.4%	2.8%
	Pulseless Ventricular Tachycardia	30.3%	16.5%	25.1%	22.9%	0.5%	4.8%
<b>CPC score at discharge</b>	1 (mild to no neurological disability)	39.0%	19.8%	19.3%	20.3%	0.4%	1.2%
	2 (moderate neurological disability)	17.1%	12.8%	35.7%	30.0%	0.4%	4.0%
	3 (severe neurological disability)	5.2%	5.0%	41.4%	36.1%	0.2%	12.1%
	4 (coma or vegetative state)	6.7%	2.1%	21.0%	33.3%	1.0%	35.9%

**Table S3.** Adjusted Associations between Patient Characteristics and 1-Year Survival, Full Model Results

Variable	Adjusted Rate Ratio (95% CI)	P Value
Age		
65 to 74 yr	1.00 [Reference]	—
75 to 84 yr	0.92 (0.88-0.96)	<0.001
≥85 yr	0.78 (0.73-0.84)	<0.001
Sex		
Female	1.04 (1.00-1.08)	0.03
Male	1.00 [Reference]	
Race		
White	1.00 [Reference]	—
Black	0.87 (0.81-0.95)	0.001
Other	1.04 (0.90-1.20)	0.63
Initial cardiac arrest rhythm		
Pulseless electrical activity	1.00 [Reference]	—
Asystole	1.02 (0.96-1.09)	0.44
Pulseless ventricular tachycardia	1.02 (0.95-1.09)	0.60
Ventricular fibrillation	1.09 (1.04-1.15)	0.001
CPC score at discharge		
1 (mild to no neurological disability)	1.00 [Reference]	—
2 (moderate neurological disability)	0.84 (0.80-0.88)	<0.001
3 (severe neurological disability)	0.58 (0.52-0.65)	<0.001
4 (coma or vegetative state)	0.14 (0.09-0.23)	<0.001
Principal reason for index admission		
Acute respiratory failure	0.86 (0.76-0.98)	0.03
Cardiac arrest	1.06 (0.94-1.20)	0.36
Coronary artery disease	1.08 (1.02-1.15)	0.01
Heart failure	0.86 (0.77-0.96)	0.01
Malignant and metastatic cancer	0.84 (0.72-0.97)	0.02
Myocardial infarction or ischemia	1.00 [Reference]	—
Other cardiovascular diagnosis	1.04 (0.98-1.10)	0.17
Other pulmonary diagnosis	0.79 (0.70-0.89)	<0.001
Renal disease	0.82 (0.70-0.97)	0.02
Other	0.98 (0.92-1.05)	0.57
Preexisting conditions		
Acute stroke	0.91 (0.80-1.04)	0.18
Baseline depression in CNS function	0.97 (0.89-1.05)	0.43
Diabetes mellitus	0.94 (0.90-0.98)	0.003
Heart failure during admission	0.92 (0.87-0.97)	0.003
Heart failure prior to admission	0.85 (0.80-0.90)	<0.001
Hepatic insufficiency	1.01 (0.86-1.19)	0.91
Hypotension	1.03 (0.97-1.08)	0.36
Major trauma	1.06 (0.90-1.24)	0.50
Metabolic or electrolyte abnormality	0.91 (0.84-0.99)	0.03
Metastatic or hematologic malignancy	0.77 (0.69-0.86)	<0.001
Myocardial infarction during admission	1.04 (1.00-1.09)	0.07
Myocardial infarction prior to admission	1.00 (0.96-1.04)	0.90
Pneumonia	0.86 (0.79-0.94)	0.001
Respiratory insufficiency	0.94 (0.90-0.98)	0.01
Renal insufficiency	0.84 (0.79-0.89)	<0.001
Septicemia	0.79 (0.70-0.89)	<0.001

Abbreviations: CNS, central nervous system; and CPC, Cerebral Performance Category .

**Table S4.** Temporal Trends in 1-Year Unadjusted Survival, Stratified by Rhythm Type

	2000	2001	2002	2003	2004	2005	2006	2007	2008
<b>Asystole / PEA*</b>									
No. Alive at 1 Year	34	93	170	245	283	293	236	257	316
No. Discharged	47	176	336	462	509	558	505	527	618
Survival Rate	72.3%	52.8%	50.6%	53.0%	55.6%	52.5%	46.7%	48.8%	51.1%
<b>VF / Pulseless VT**</b>									
No. Alive at 1 Year	76	167	258	296	306	320	272	248	210
No. Discharged	106	246	378	451	472	455	402	383	341
Survival Rate	71.7%	67.9%	68.3%	65.6%	64.8%	70.3%	67.7%	64.8%	61.6%

Abbreviations: PEA, pulseless electrical activity; VF, ventricular fibrillation; and VT, ventricular tachycardia

\* *P* for trend = 0.32

\*\* *P* for trend = 0.49

**Table S5.** Risk-Adjusted Rates of 2-Year Survival for Pre-Specified Subgroups\*

Subgroup	Unadjusted Survival, %	Risk-Adjusted Survival, %	Adjusted Rate Ratio (95% CI)	<i>P</i> Value
Age				
65 to 74 yr	55.8	55.8	1.00 [Reference]	—
75 to 84 yr	46.9	48.6	0.87 (0.83-0.91)	<0.001
≥85 yr	35.7	40.2	0.72 (0.66-0.79)	<0.001
Sex				
Female	49.7	52.5	1.06 (1.01-1.11)	0.03
Male	49.5	49.5	1.00 [Reference]	—
Race				
White	51.2	51.2	1.00 [Reference]	—
Black	36.1	45.6	0.89 (0.81-0.97)	0.009
Other	44.5	51.7	1.01 (0.86-1.20)	0.87
Initial cardiac arrest rhythm				
Pulseless electrical activity	41.8	41.8	1.00 [Reference]	—
Asystole	43.8	41.8	1.00 (0.94-1.07)	0.94
Pulseless ventricular tachycardia	50.1	41.4	0.99 (0.91-1.07)	0.75
Ventricular fibrillation	61.6	46.4	1.11 (1.04-1.18)	0.001
CPC score at discharge				
1 (mild to no neurological disability)	63.6	63.6	1.00 [Reference]	—
2 (moderate neurological disability)	44.7	52.1	0.82 (0.77-0.86)	<0.001
3 (severe neurological disability)	26.3	33.7	0.53 (0.46-0.60)	<0.001
4 (coma or vegetative state)	7.7	9.5	0.15 (0.10-0.24)	<0.001

Abbreviations: CI, confidence interval; and CPC, Cerebral Performance Category.

\* Models adjusted for the variables listed in Table S1.

**Table S6.** Adjusted Associations between Select Patient Characteristics and 2-Year Readmission\*

Variable	Adjusted Hazard Ratio (95% CI)	<i>P</i> Value
Age		
65 to 74 yr	1.00 [Reference]	—
75 to 84 yr	1.05 (0.98-1.13)	0.16
≥85 yr	1.09 (0.97-1.21)	0.13
Sex		
Female	1.10 (1.03-1.17)	0.006
Male	1.00 [Reference]	—
Race		
White	1.00 [Reference]	—
Black	1.18 (1.05-1.32)	0.006
Other	1.00 (0.79-1.26)	0.99
Initial cardiac arrest rhythm		
Pulseless electrical activity	1.00 [Reference]	—
Asystole	0.97 (0.89-1.06)	0.50
Pulseless ventricular tachycardia	1.02 (0.91-1.13)	0.76
Ventricular fibrillation	0.92 (0.84-1.01)	0.09
CPC score at discharge		
1 (mild to no neurological disability)	1.00 [Reference]	—
2 (moderate neurological disability)	1.21 (1.11-1.31)	<0.001
3 (severe neurological disability)	1.28 (1.13-1.44)	0.001
4 (coma or vegetative state)	0.87 (0.59-1.28)	0.48
Preexisting conditions		
Diabetes mellitus	1.21 (1.13-1.30)	<0.001
Heart failure prior to admission	1.25 (1.15-1.35)	<0.001
Metastatic or hematologic malignancy	1.15 (1.00-1.32)	0.05
Renal insufficiency	1.31 (1.21-1.43)	<0.001

Abbreviations: CI, confidence interval; and CPC, Cerebral Performance Category.

\* Models adjusted for the variables listed in Table S1.