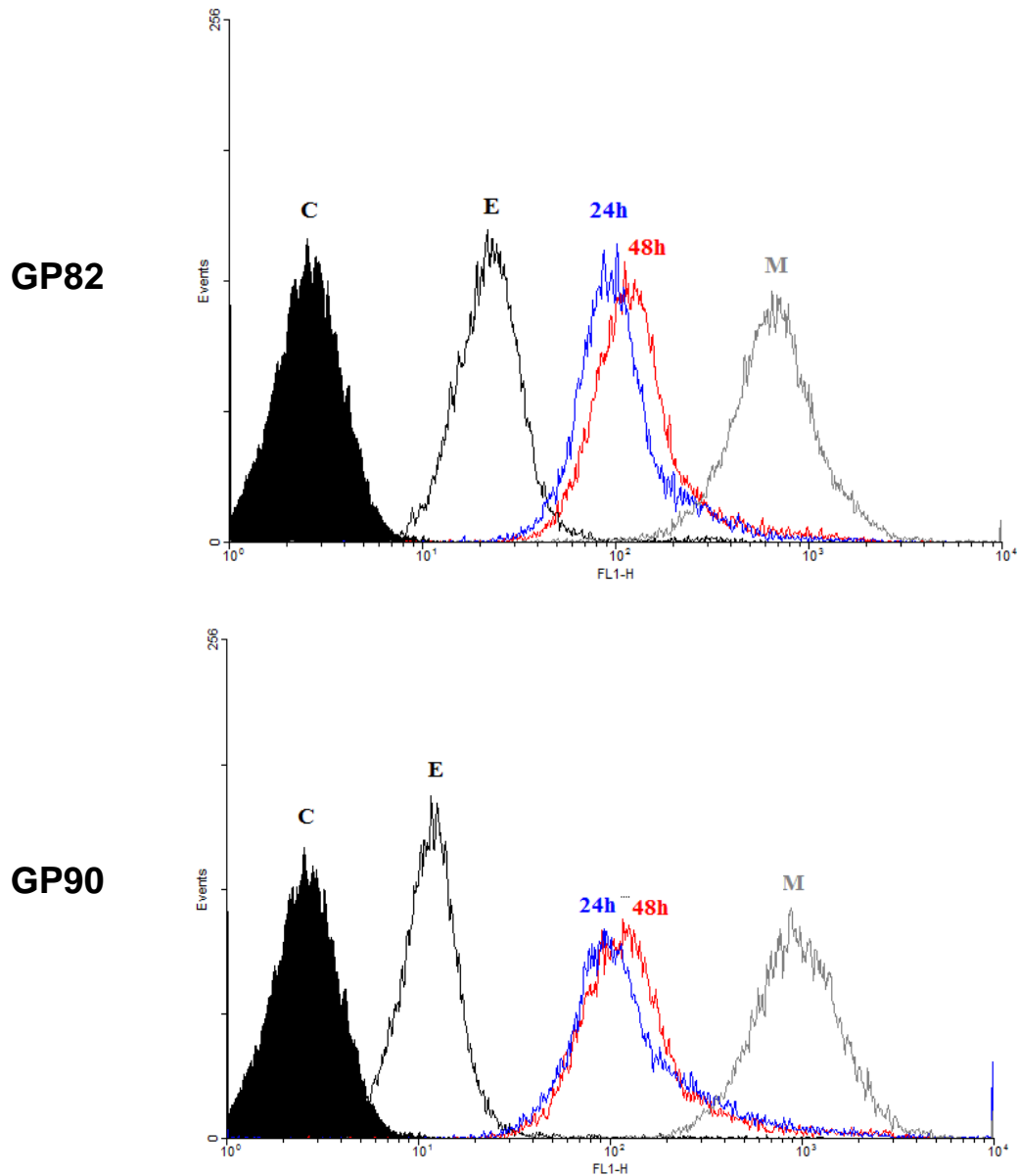


Flow cytometry analysis of parasites populations



Legend:

Control (C): epimastigotes incubated with Alexa Fluor 488

Epimastigotes (E): epimastigotes incubated with mAb 3F6 or 1G7 followed by Alexa Fluor 488

Attached parasites 24 h (24h): intermediate forms incubated with mAb 3F6 or 1G7 followed by Alexa Fluor 488

Attached parasites 48 h (48h): intermediate forms incubated with mAb 3F6 or 1G7 followed by Alexa Fluor 488

Metacyclic forms (M): metacyclic forms incubated with mAb 3F6 or 1G7 followed by Alexa Fluor 488