

SUPPORTING INFORMATION

Efficient Delivery of Cell Impermeable Phosphopeptides by a Cyclic Peptide Amphiphile Containing Tryptophan and Arginine

*Amir Nasrolahi Shirazi,[†] Rakesh Kumar Tiwari,[†] Donghoon Oh,[†] Antara Banerjee,[‡] Arpita
Yadav,[‡] and Keykavous Parang^{*†}*

kparang@uri.edu

[†]Department of Biomedical and Pharmaceutical Sciences, College of Pharmacy, University of
Rhode Island, Kingston, RI 02881, United States

[‡]Department of Chemistry, University Institute of Engineering and Technology, Chhatrapati
Shahuji Maharaj University, Kanpur 208024, India

*Corresponding author:

K. Parang: 7 Greenhouse Road, Department of Biomedical and Pharmaceutical Sciences,
College of Pharmacy, University of Rhode Island, Kingston, Rhode Island, 02881, United States;
Tel.: +1-401-874-4471; Fax: +1-401-874-5787; E-mail address: kparang@uri.edu

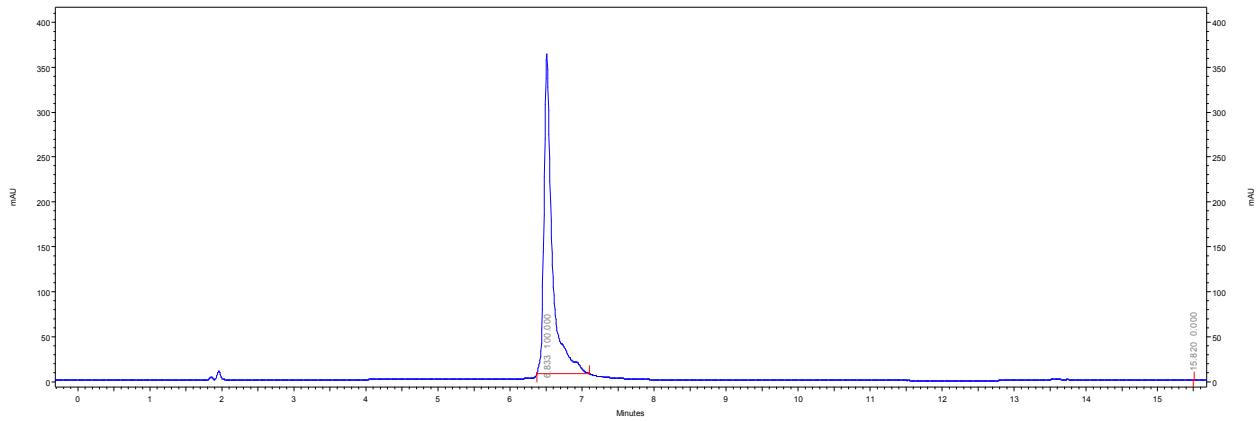
Table of Contents:	Page
1. Analytical HPLC	3
2. High-Resolution MALDI TOF/TOF Data	7

1. Analytical HPLC

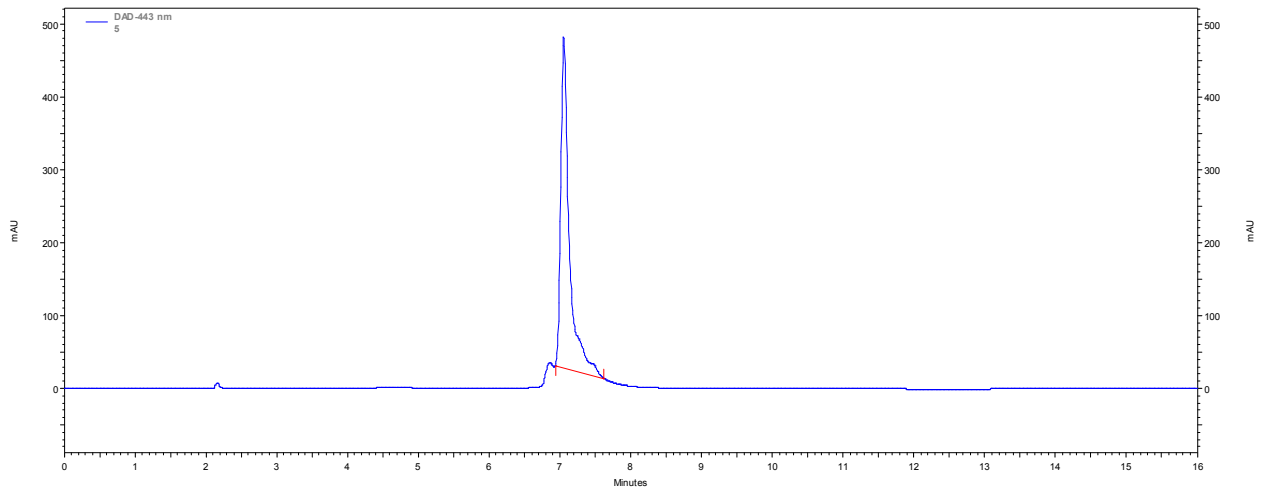
The analytical HPLC was performed on a Hitachi analytical HPLC system using a C18 Shimadzu Premier 3 μm column (150 cm \times 4.6 mm) using a gradient solvent system, and a flow rate of 1 mL/min with detection at 214 nm. Analytical HPLC shows multiple charged peptides.

Time (min)	Water-A (%)	Acetonitrile-B (%)	Flow Rate (mL/min)
0.0	100.0	0.0	1.0
10.0	0.0	100.0	1.0
14.0	100.0	0.0	1.0
16.0	100.0	0.0	1.0

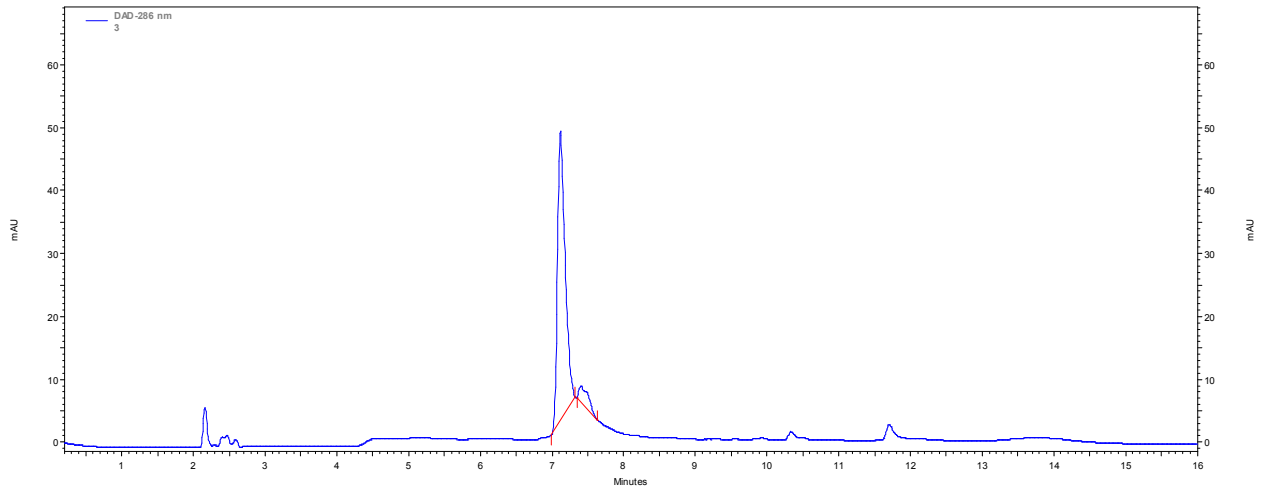
F'-pYVNVQN-NH₂



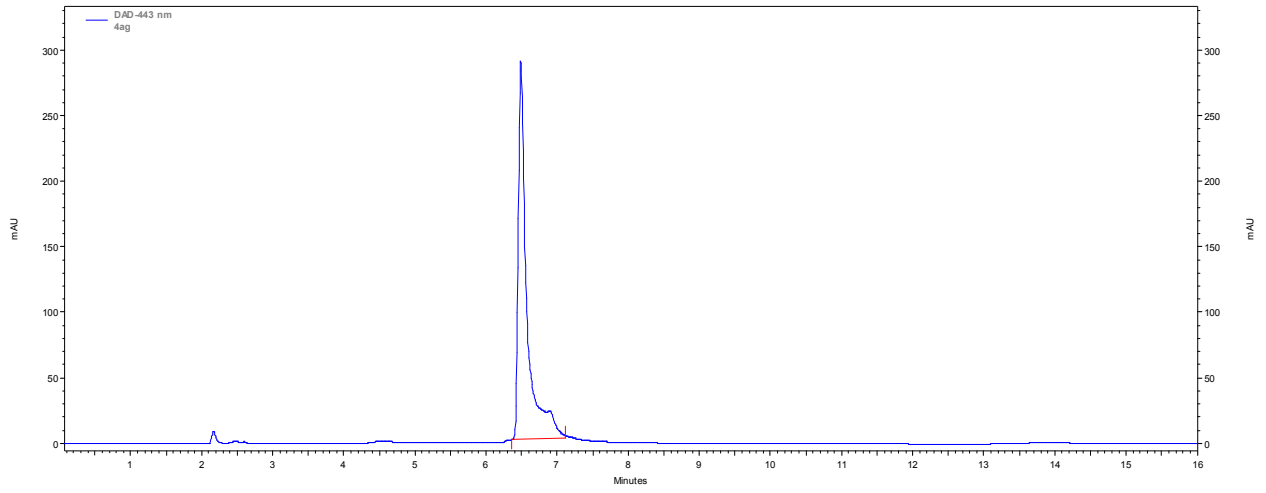
F'-AEEIYGEFEAKKKK



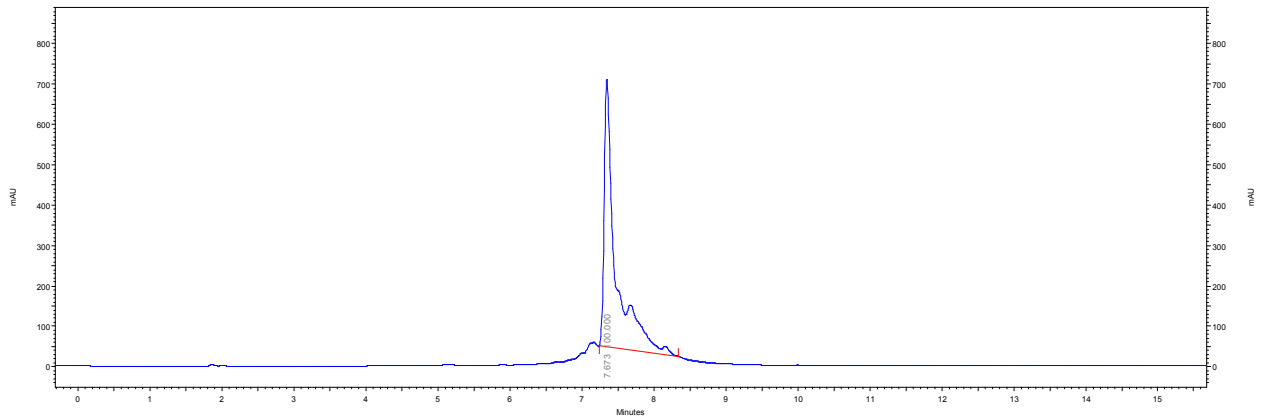
F'-NEpYTARQ



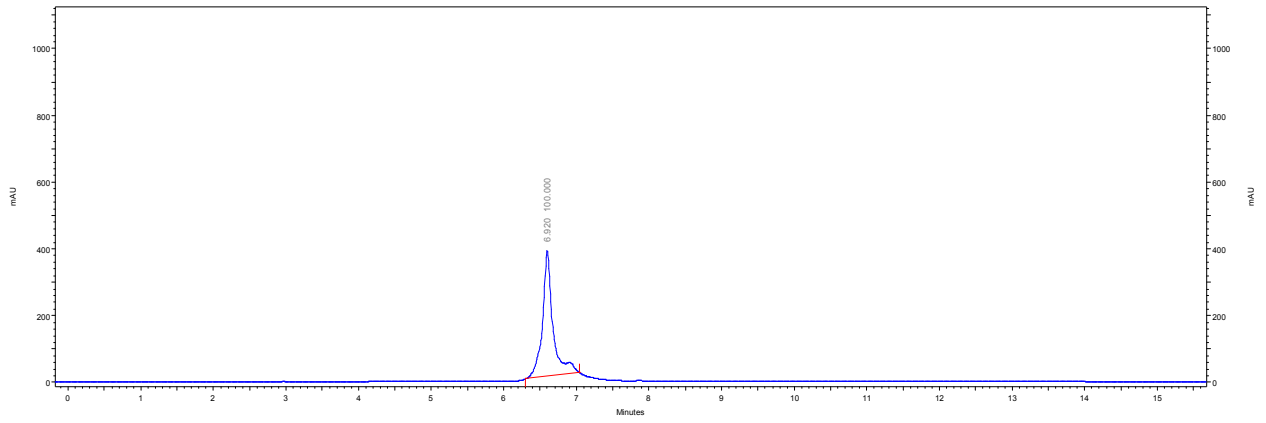
F'-GpYLPQTV



F'-PEpYLGLD

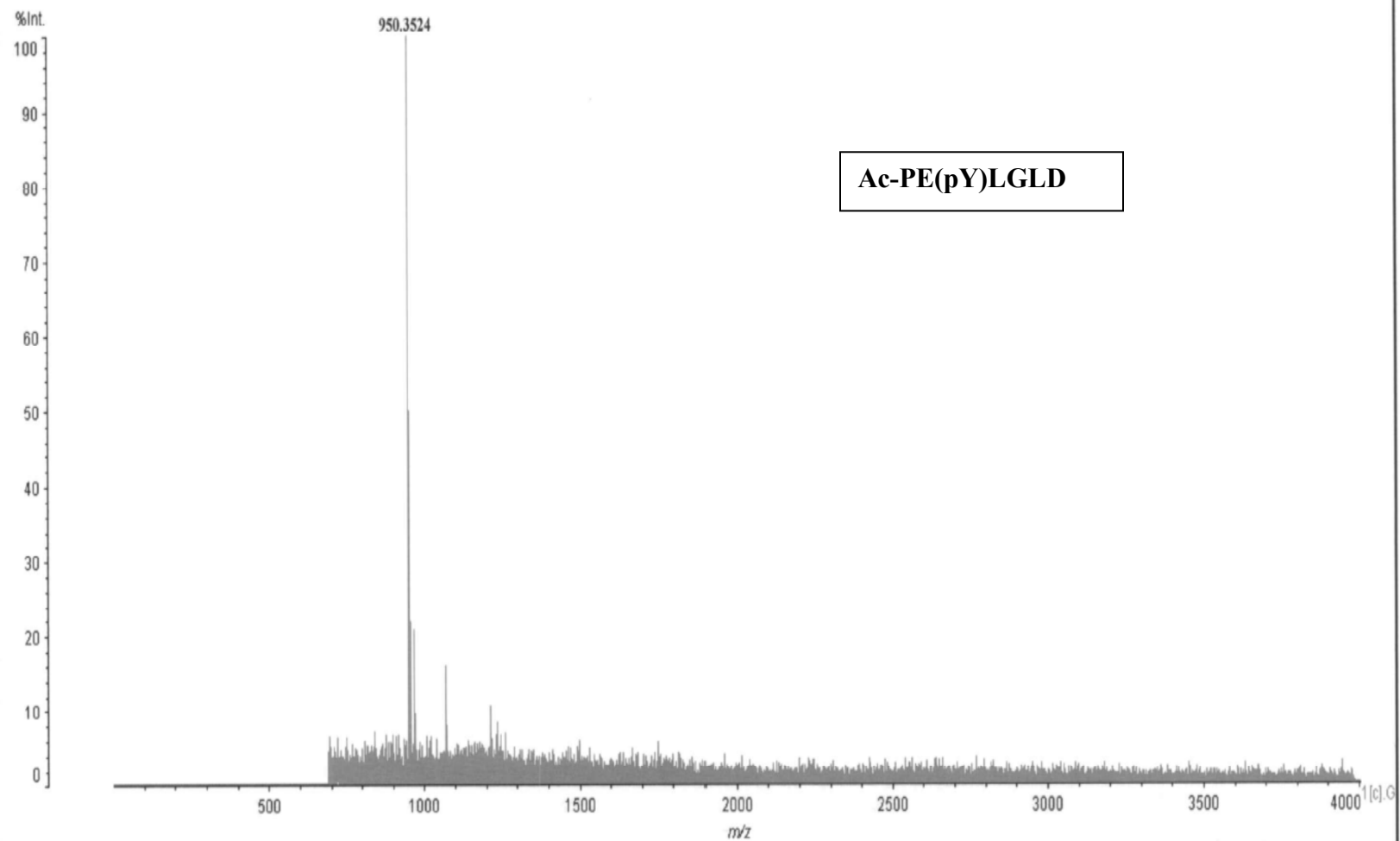


F'-PEpYLGLD

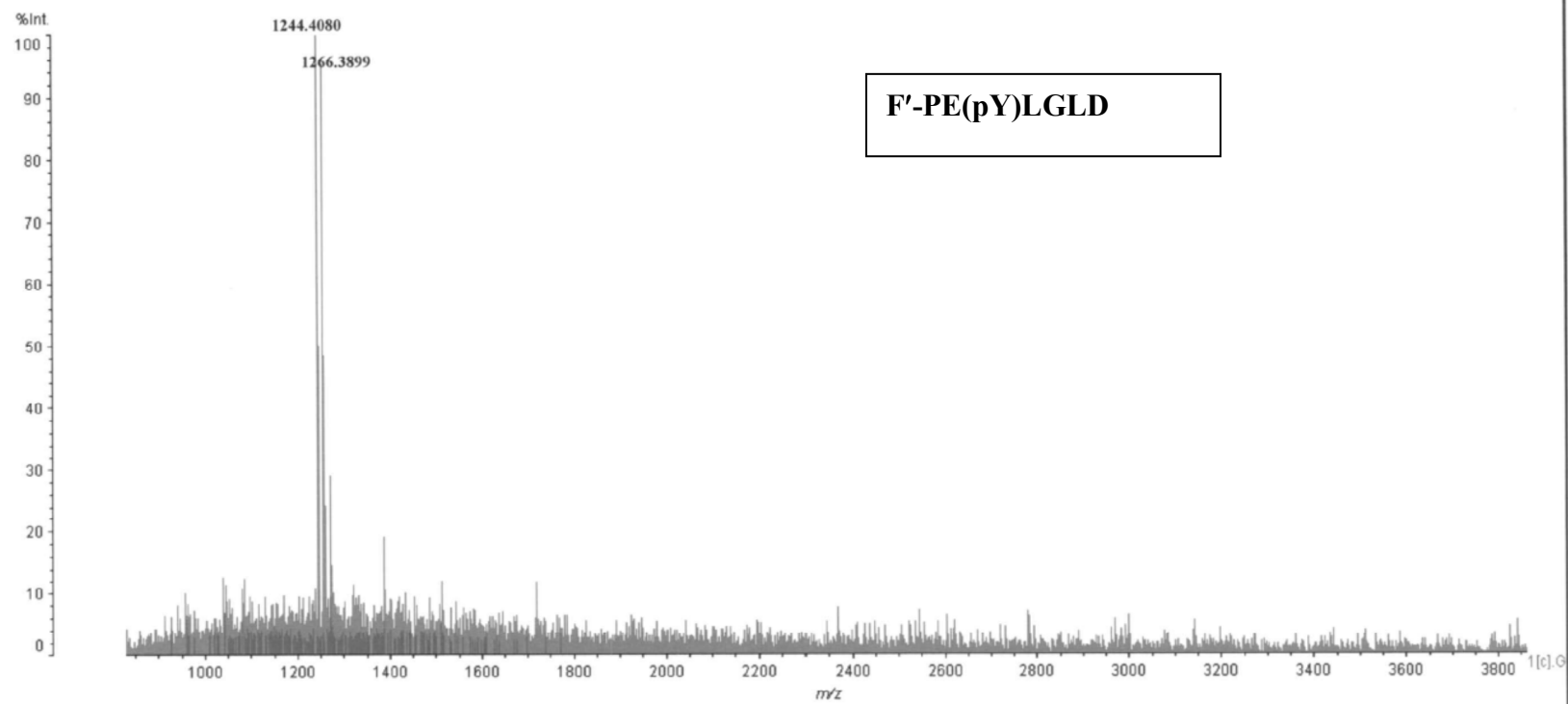


2. High-Resolution MALDI TOF/TOF Data

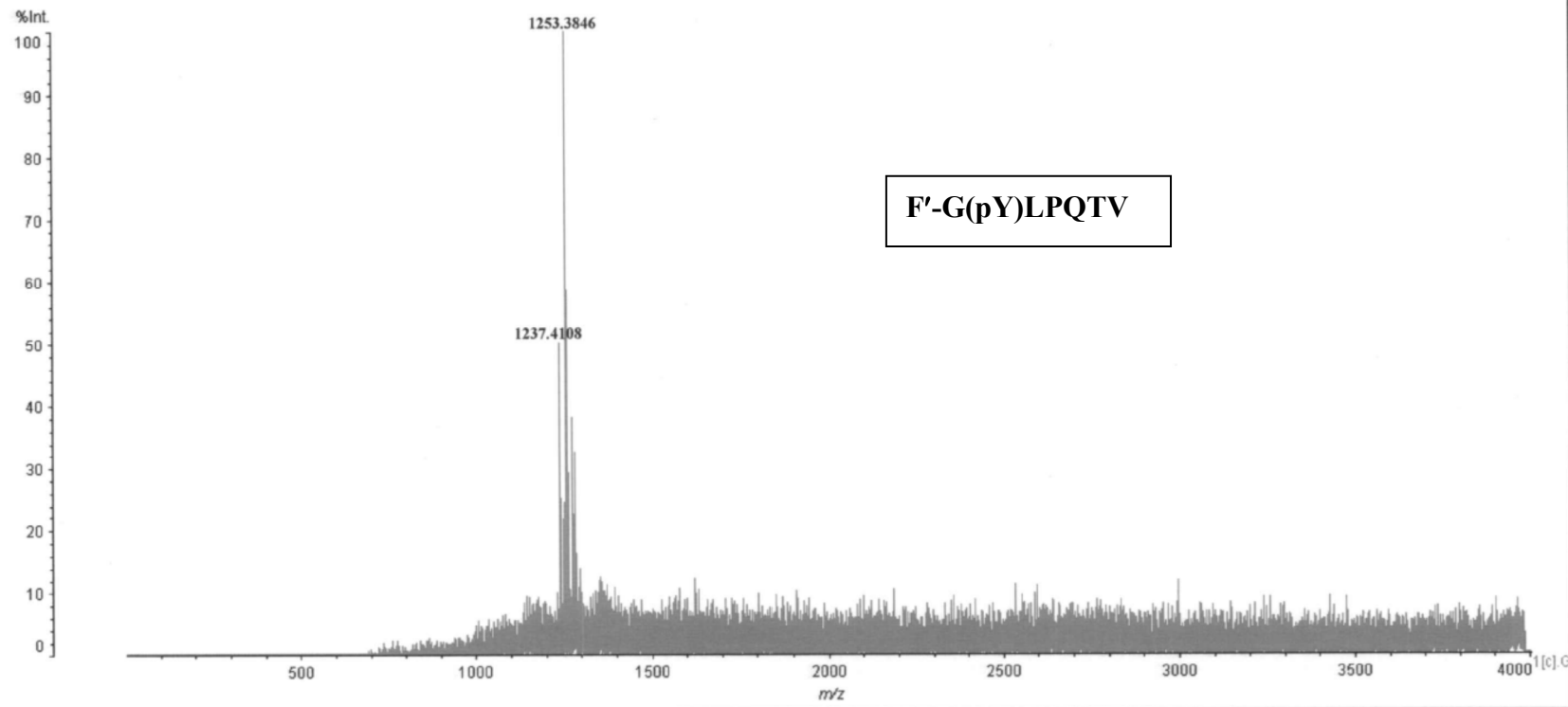
Data: Rakeshphosphopeptides\Ac-PE0001.G7[c] 5 Mar 2013 11:50 Cal: low mass peptide 5 Dec 2012 12:34
Shimadzu Biotech Axima Performance 2.9.2.20100726: Mode Reflectron, Power: 50, Blanked, P.Ext. @ 2900 (bin 98)



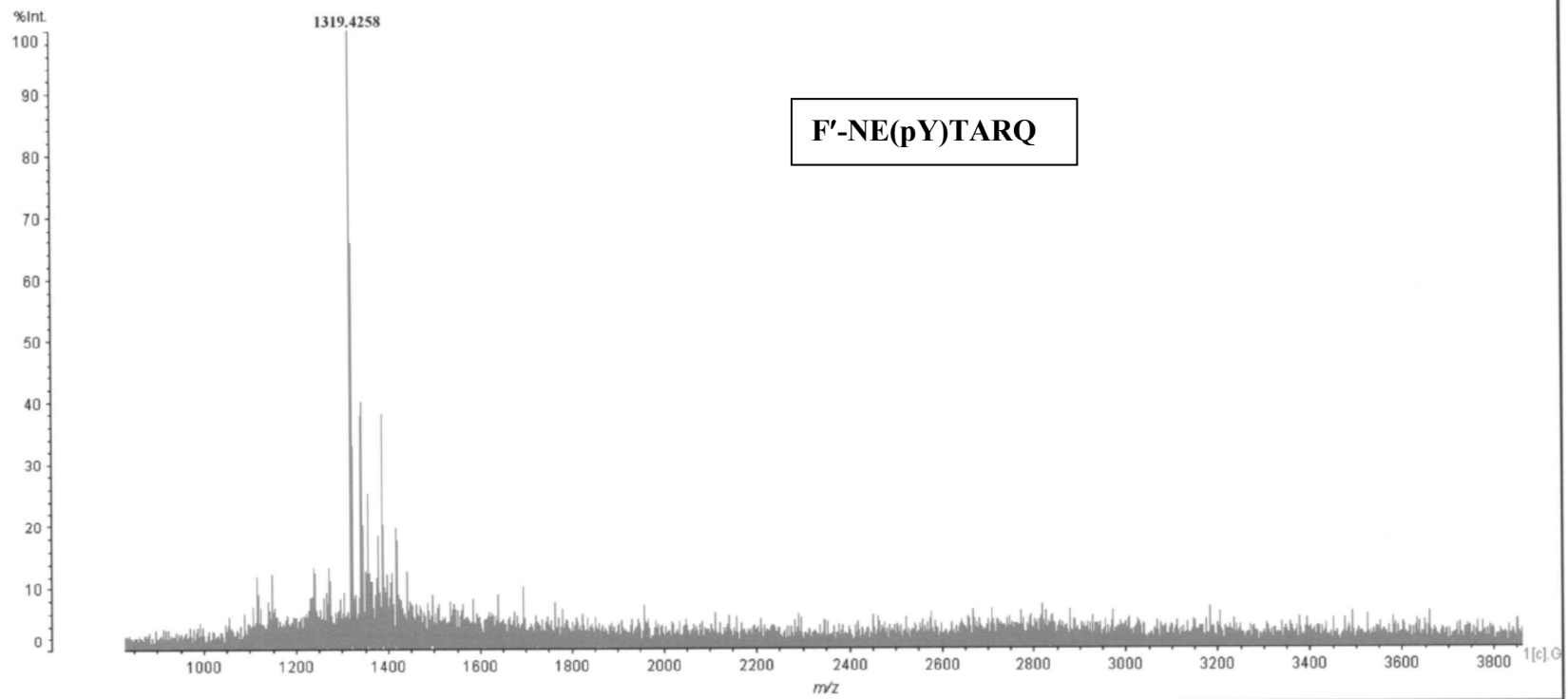
Data: Rakesh\phosphopeptides\F-PEpYLGLD-10003.G10[c] 5 Mar 2013 15:08 Cal: low mass peptide 5 Dec 2012 12:34
Shimadzu Biotech Axima Performance 2.9.2.20100726: Mode Reflectron, Power: 30, Blanked, P.Ext. @ 2300 (bin 87)



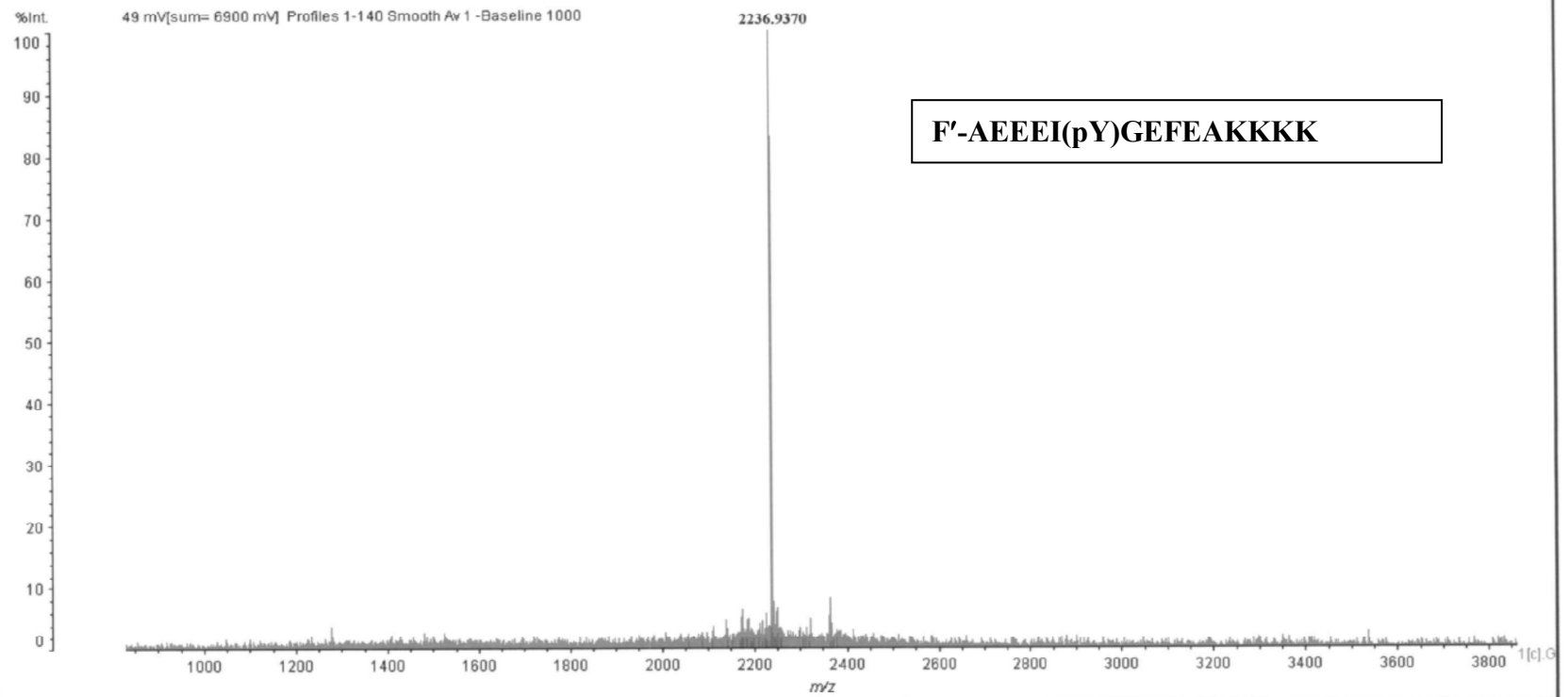
Data: Rakeshphosphopeptidesf-gpYlptq0001.G9[c] 5 Mar 2013 12:04 Cal: low mass peptide 5 Dec 2012 12:34
Shimadzu Biotech Axima Performance 2.9.2.20100726: Mode Reflectron, Power: 50, Blanked, P.Ext. @ 2500 (bin 91)



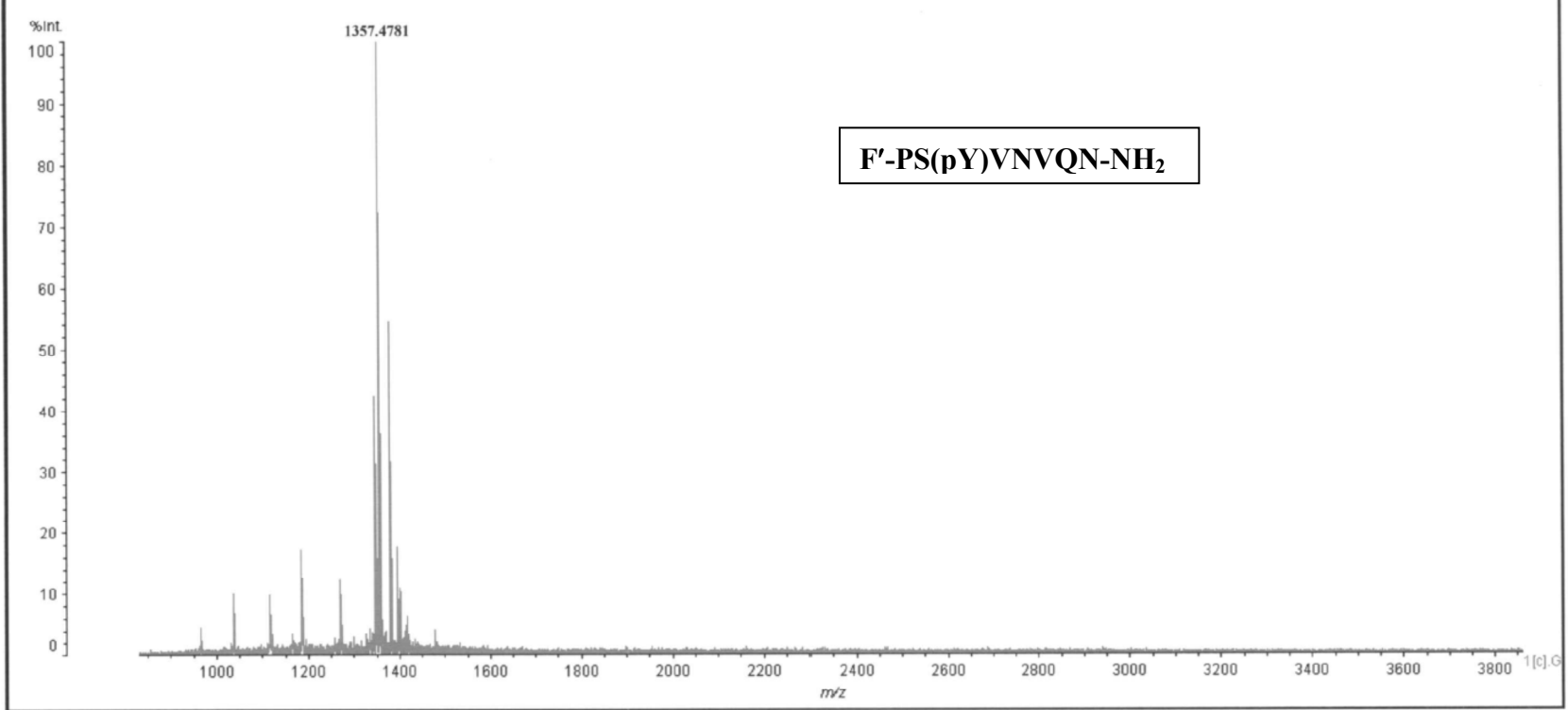
Data: rakeshphosphopeptides\0030006.G11[c] 4 Mar 2013 18:27 Cal: low mass peptide1 4 Mar 2013 16:55
Shimadzu Biotech Axima Performance 2.9.2.20100726: Mode Reflectron, Power: 41, Blanked, P.Ext. @ 2600 (bin 93)



Data: rakesh\phosphopeptides\0020010.012[c] 4 Mar 2013 18:16 Cal: low mass peptide 5 Dec 2012 12:34
Shimadzu Biotech Axima Performance 2.9.2.20100726: Mode Reflectron, Power: 36, Blanked, P.Ext. @ 3450 (bin 107)



Data: rakesh\phosphopeptides\0010003.G13[c] 4 Mar 2013 18:00 Cal. low mass peptide 5 Dec 2012 12:34
Shimadzu Biotech Axima Performance 2.9.2.20100726: Mode Reflectron, Power: 36, Blanked, P.Ext. @ 2850 (bin 97)



Data: Rakesh\phosphopeptides\flu-GpYEE-10010.G14[c] 4 Mar 2013 17:47 Cal: low mass peptide 5 Dec 2012 12:34
Shimadzu Biotech Axima Performance 2.9.2.20100726: Mode Reflectron, Power: 36, Blanked, P.Ext. @ 2700 (bin 95)

