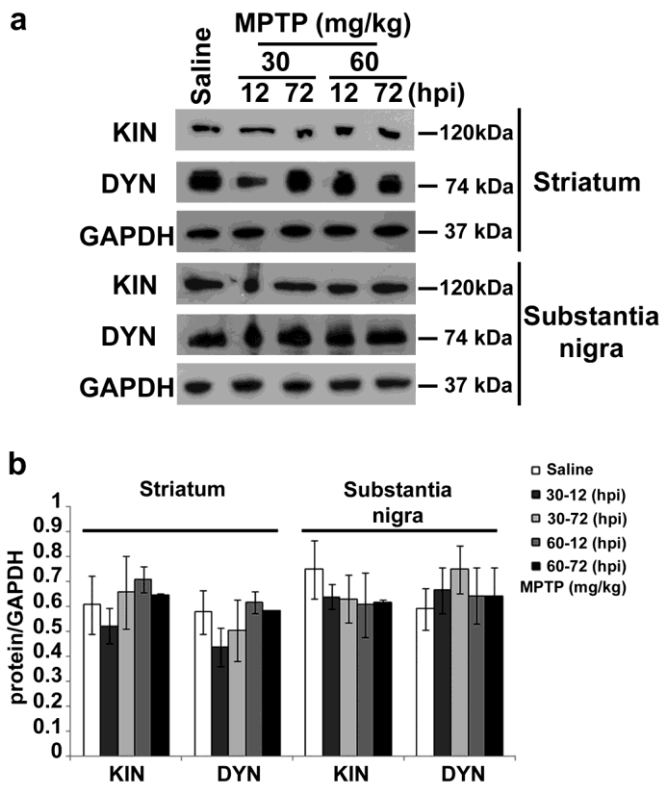


MICROTUBULE ALTERATIONS OCCUR EARLY IN EXPERIMENTAL PARKINSONISM AND THE MICROTUBULE STABILIZER EPOTHILONE D IS NEUROPROTECTIVE

Daniele Cartelli, Francesca Casagrande, Carla Letizia Busceti, Domenico Bucci, Gemma Molinaro, Anna Traficante, Daniele Passarella, Erminio Giavini, Gianni Pezzoli, Giuseppe Battaglia, Graziella Cappelletti¹

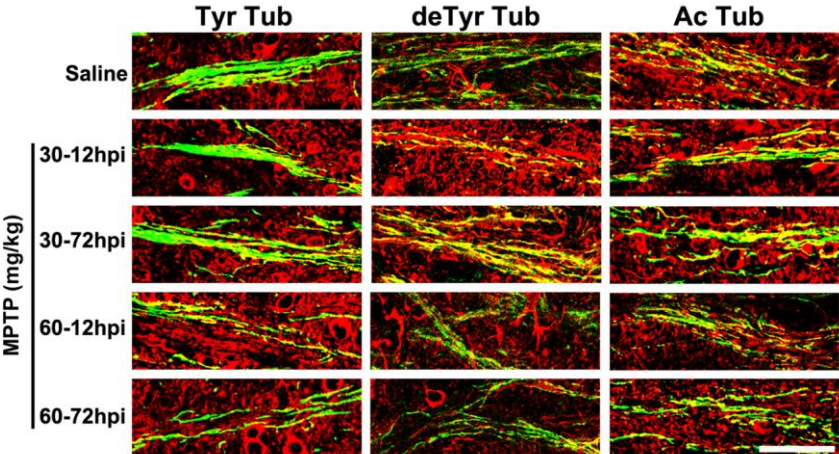
Supplementary Figure S1. MPTP does not affect the levels of motor proteins.

(a) Immunoblot of levels of kinesin (Kin) and dynein (Dyn) in lysates of striatum and substantia nigra of mice treated as in Fig. 1. (b) Densitometric analyses of immunoblot reported in **d** (mean \pm S.E.M., n = 4-6 mice per group). hpi = hours post last injection of MPTP.



Supplementary Figure S2. MPTP affects MT stability inside dopaminergic fibres.

Confocal images of the nigrostriatal pathways of mice treated as in Fig. 1. Green represents TH staining and red signals the various tubulin PTMs. Scale bar = 50 μ m. hpi = hours post last injection of MPTP.



Supplementary Table S1

Analysis of M2 parameter (TH vs. tubulins) in striatal section.

	Tyr Tubulin	deTyr Tubulin	Ac Tubulin
Saline	0.79±0.019	0.77±0.049	0.88±0.040
MPTP, 30 mg/kg (12 h)	0.77±0.052	0.92±0.017	0.79±0.043
MPTP, 30 mg/kg (72 h)	0.75±0.043	0.90±0.041	0.86±0.026
MPTP, 60 mg/kg (12 h)	0.64±0.052	0.85±0.048	0.80±0.049
MPTP, 60 mg/kg (72 h)	0.67±0.083	0.94±0.081	0.94±0.011

Data are expressed as mean ± S.E.M., n=4 sections for each mouse from 4-6 mice per group.

Supplementary Table S2

Analysis of the Fluorescence Intensity (AU) inside dopaminergic neuron.

	Tyr Tubulin	deTyr Tubulin	Ac Tubulin
Saline	93.6 ± 3.6	32.9 ± 2.8	28.8 ± 3.1
MPTP, 30 mg/kg (12 h)	48.0 ± 4.9 (*)	104 ± 6.5 (*)	58.2 ± 6.5 (*)
MPTP, 30 mg/kg (72 h)	77.5 ± 6.9	97.9 ± 5.6 (*)	89.6 ± 5.3 (*)
MPTP, 60 mg/kg (12 h)	22.8 ± 4.4 (*)	106 ± 8 (*)	25.2 ± 4.7
MPTP, 60 mg/kg (72 h)	53.6 ± 8.3 (*)	20.6 ± 3.8	2.4 ± 1.3 (*)

Data are expressed as mean ± S.E.M., n=4 sections for each mouse from 4-6 mice per group. * $P < 0.05$; one-way ANOVA, Dunnett *post hoc*: versus saline-injected mice.