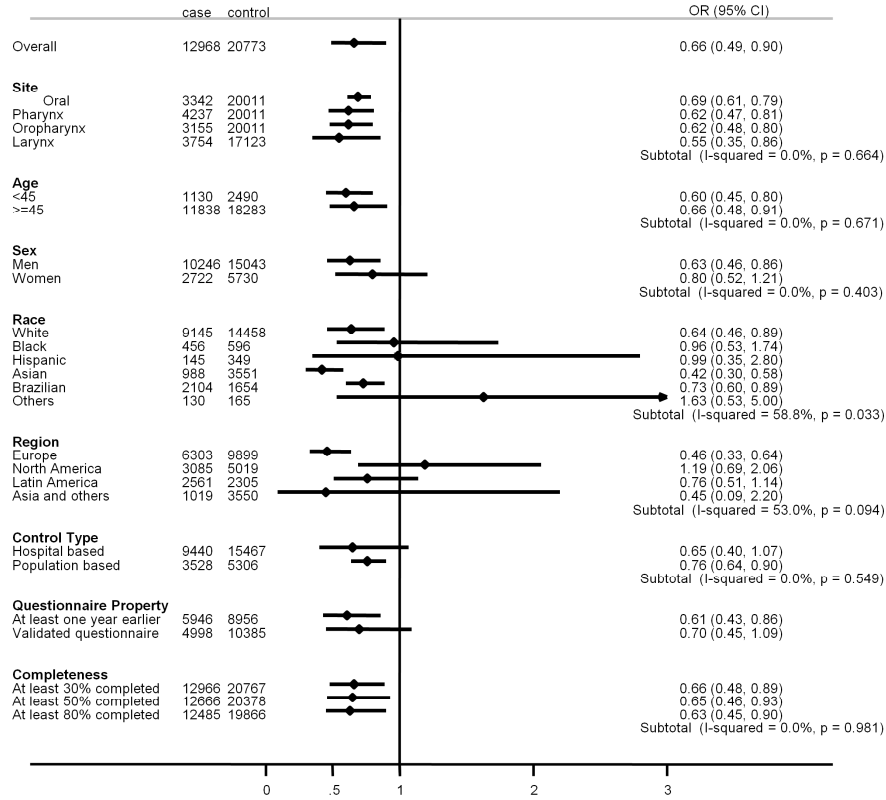
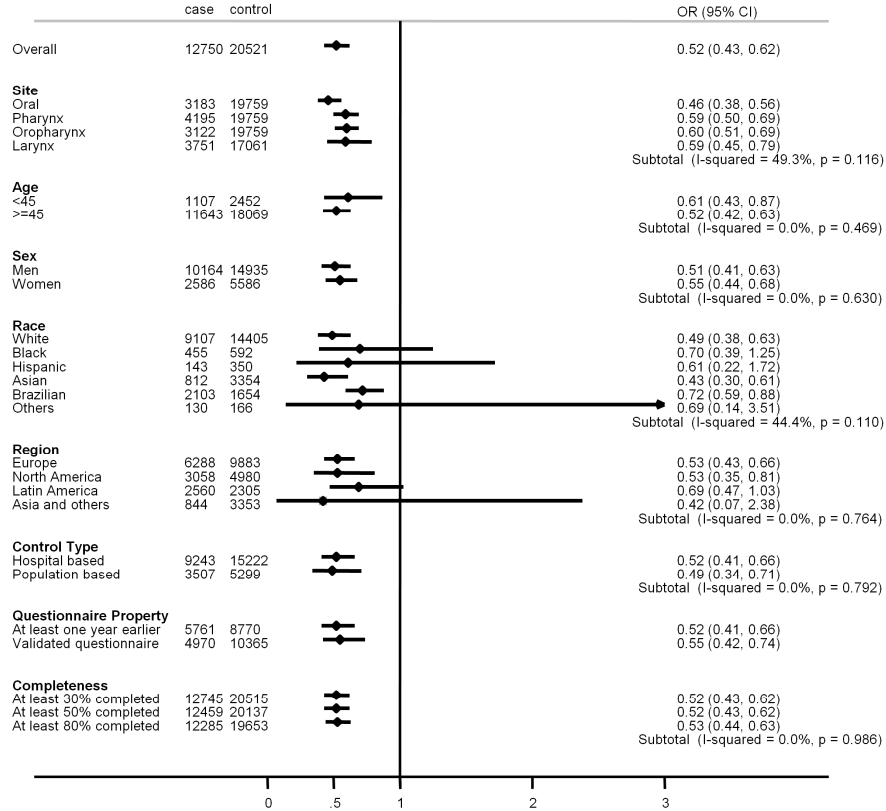


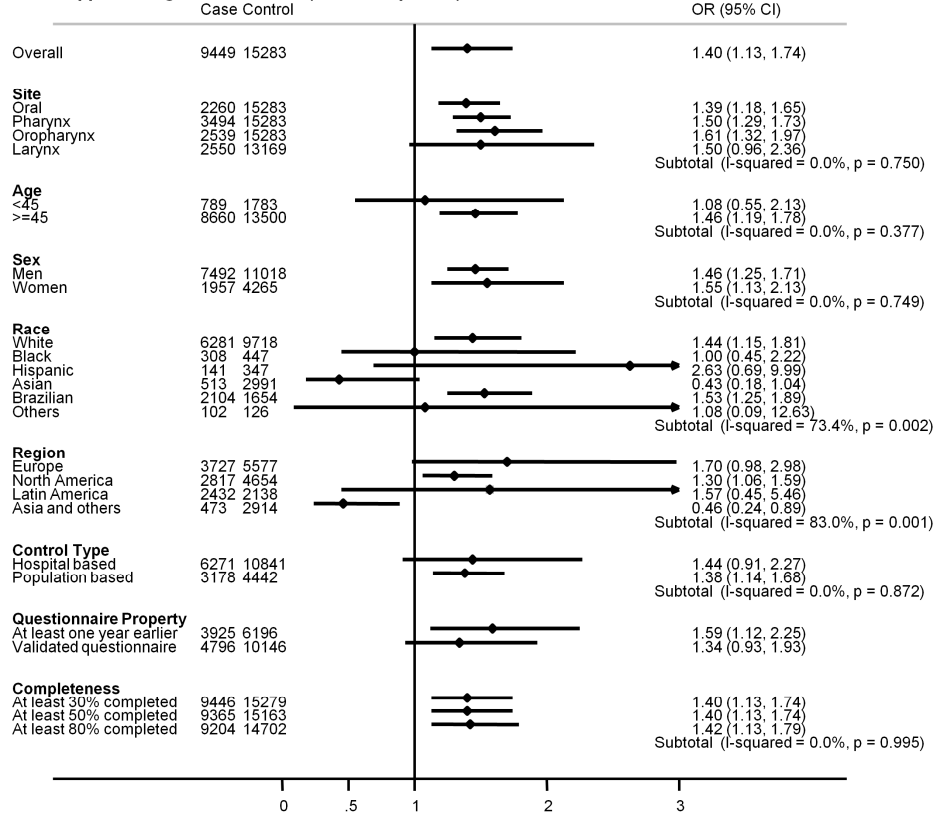
Appendix Figure 1. Vegetables (4th vs. 1st quartile)



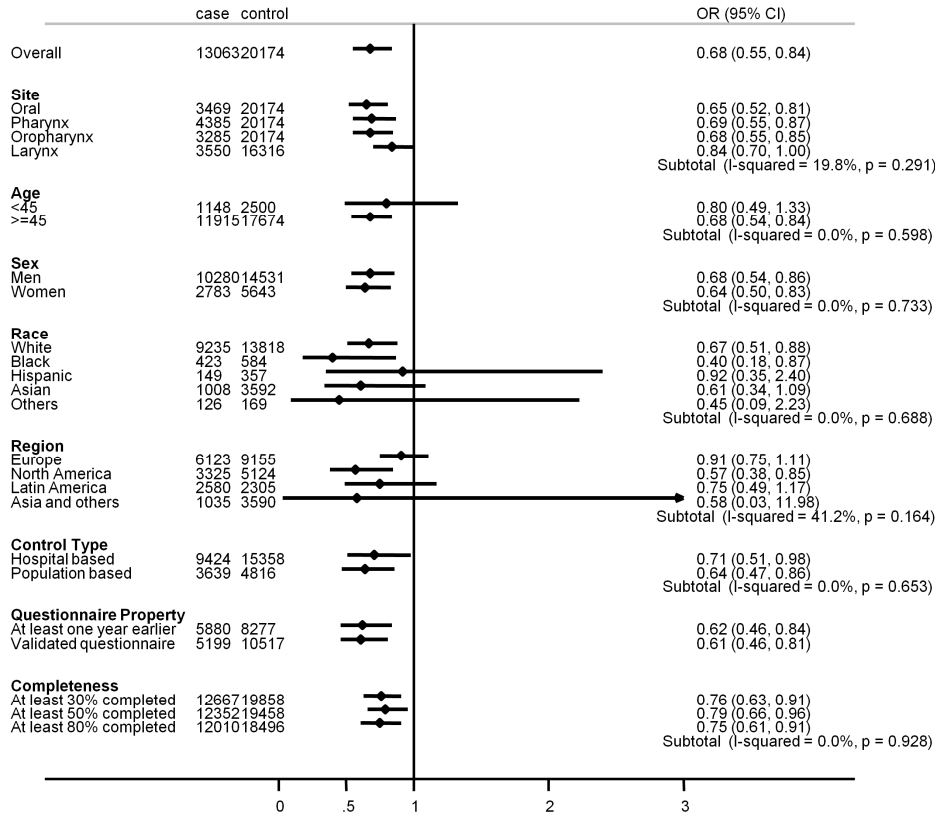
Appendix Figure 2. Fruit (4th vs. 1st quartile)



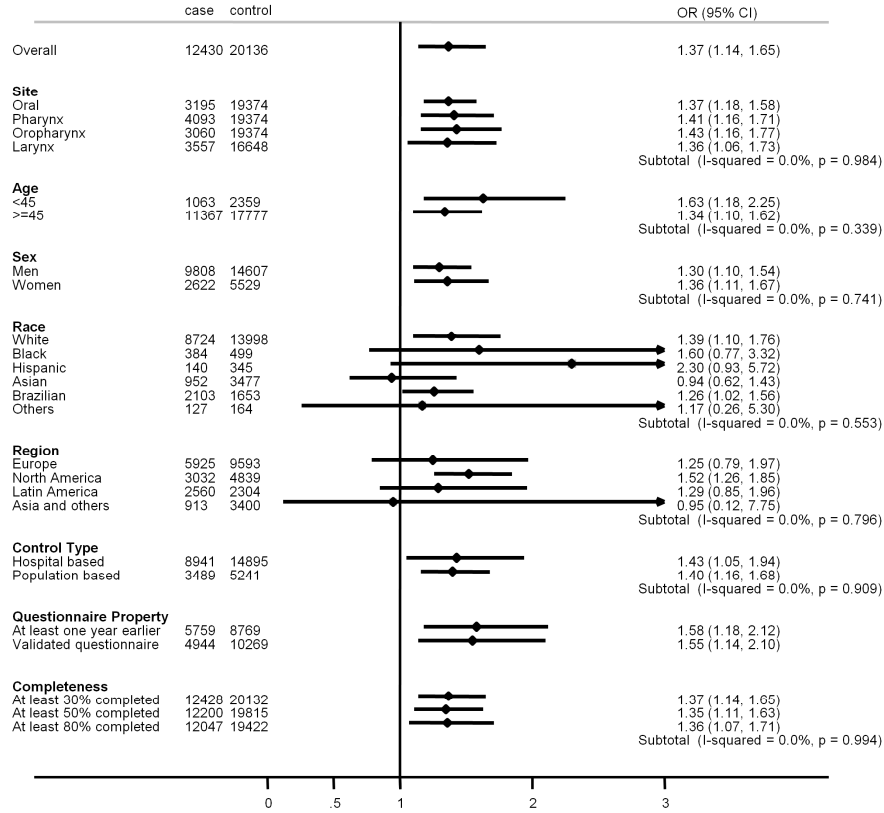
Appendix Figure 3. Red meat (4th vs. 1st quartile)



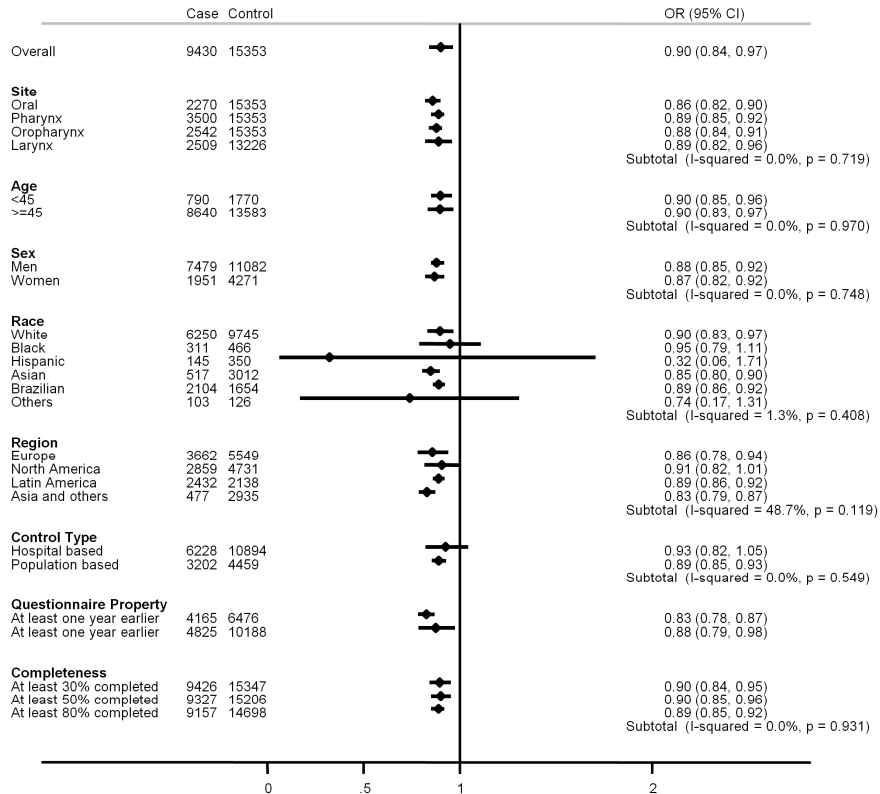
Appendix Figure 4. White meat (4th vs. 1st Quartile)



Appendix Figure 5. Processed meat (4th vs. 1st Quartile)



Appendix Figure 6. Scores* (every one score increase)



*High score indicates higher frequency of fruit and vegetable intake and lower frequency of red meat intake

Table 1. Summary of individual studies in INHANCE consortium pooled data version 1.3, by region and study period*

Study Location (Reference†)	Recruitment period	Case subjects				Control subjects‡		
		Source	Participation rate, %	Age eligibility, years	Total	Source	Participation rate, %	Total
Europe								
Milan, Italy	1984–1989	Hospital	95§	<80	416	Hospital (unhealthy)	95§	1531
Aviano, Italy	1984–1989	Hospital	>95§	>18	482	Hospital (unhealthy)	95§	855
Paris, France	1987–1992	Hospital	95§	NA	323	Hospital (unhealthy)	95§	234
Italy (Aviano, Milan, Latina)¶	1990–1999	Hospital	>95	18–80	1058	Hospital (unhealthy)	95	2579
Switzerland	1991–1997	Hospital	95	<80	516	Hospital (unhealthy)	95	883
Central Europe (Banska Bystrica, Bucharest, Budapest, Lodz, Moscow)¶	1998–2003	Hospital	96	≥15	762	Hospital (unhealthy)	97	907
Rome	2002–2007	Hospital	98	NA	275	Hospital (unhealthy)	94	294
Western Europe	2002–2005	Hospital	82	18–98	1728	Hospital (unhealthy)**	68	1993
Saarland, Germany	2001–2003	Hospital		50–75	94	General health exam		94
Heidelberg, Germany	1998–2000	Hospital	96	<80	252	Population registries	62	769
North America								
Seattle, WA	1985–1995	Cancer registry	54.4, 63.3¶	18–65	407	Random digit dialing	63, 61¶	607
North Carolin	1994–1997	Hospital	88	>17	180	Hospital (unhealthy)	86	202
Tampa, F	1994–2003	Hospital	98	≥18	207	Cancer screening clinic (healthy)	90	897
Los Angeles, CA	1999–2004	Cancer registry	49	18–65	417	Neighborhood	67.5	1005
Boston, MA	1999–2003	Hospital	88.7	≥18	584	Resident list	48.7	659
US multicenter	1984–1985	Cancer Registry	75	18–79	1114	Random digit dialing Health Care Financing Administration	76	1268
MSKCC, NY	1992–1994	Hospital			134	Blood bank		169
Seattle-LEO, WA	1983–1987	Cancer Registry	81	20–74	573	Random digit dialing	75	445
Latin America								
Puerto Rico	1992–1995	Cancer registry	71	21–79	350	Residential records	83	521
Latin America (Buenos Aires, Havana, Goiânia, Pelotas, Porto Alegre, Rio de Janeiro, São Paulo)¶ (NA)	2000–2003	Hospital	95	15–79	2191	Hospital (unhealthy)	86	1706
Asia and others								
Japan	2001–2005	Hospital	61	20–79	526	Hospital (unhealthy)	41	3102
International								
International (Italy, Spain, Ireland, Poland, Canada, Australia, Cuba, India, Sudan)¶	1992–1997	Hospital	88.7	NA	1559	Hospital/ Community	87.3	1676

*INHANCE = International Head and Neck Cancer Epidemiology; NA = not applicable/non available.

†: Representative publication in which study methods are described.

‡: All studies frequency matched control subjects to case subjects on age and sex. Additional frequency matching factors included study center (Italy, Central Europe, South America, and International multicenter studies), hospital (France study), ethnicity (Tampa study), and neighborhood (Los Angeles study).

§: Participation rate was not formally assessed, estimated response rate reported.

¶: Multicenter study.

¶: Two response rates are reported because data were collected in two population-based case-control studies, the first from 1985–1989 among men and the second from 1990–1995 among men and women

** The 3 UK centers (Glasgow, Manchester, and Newcastle) from the Western European study were chosen from the same family medical practice (population-based).