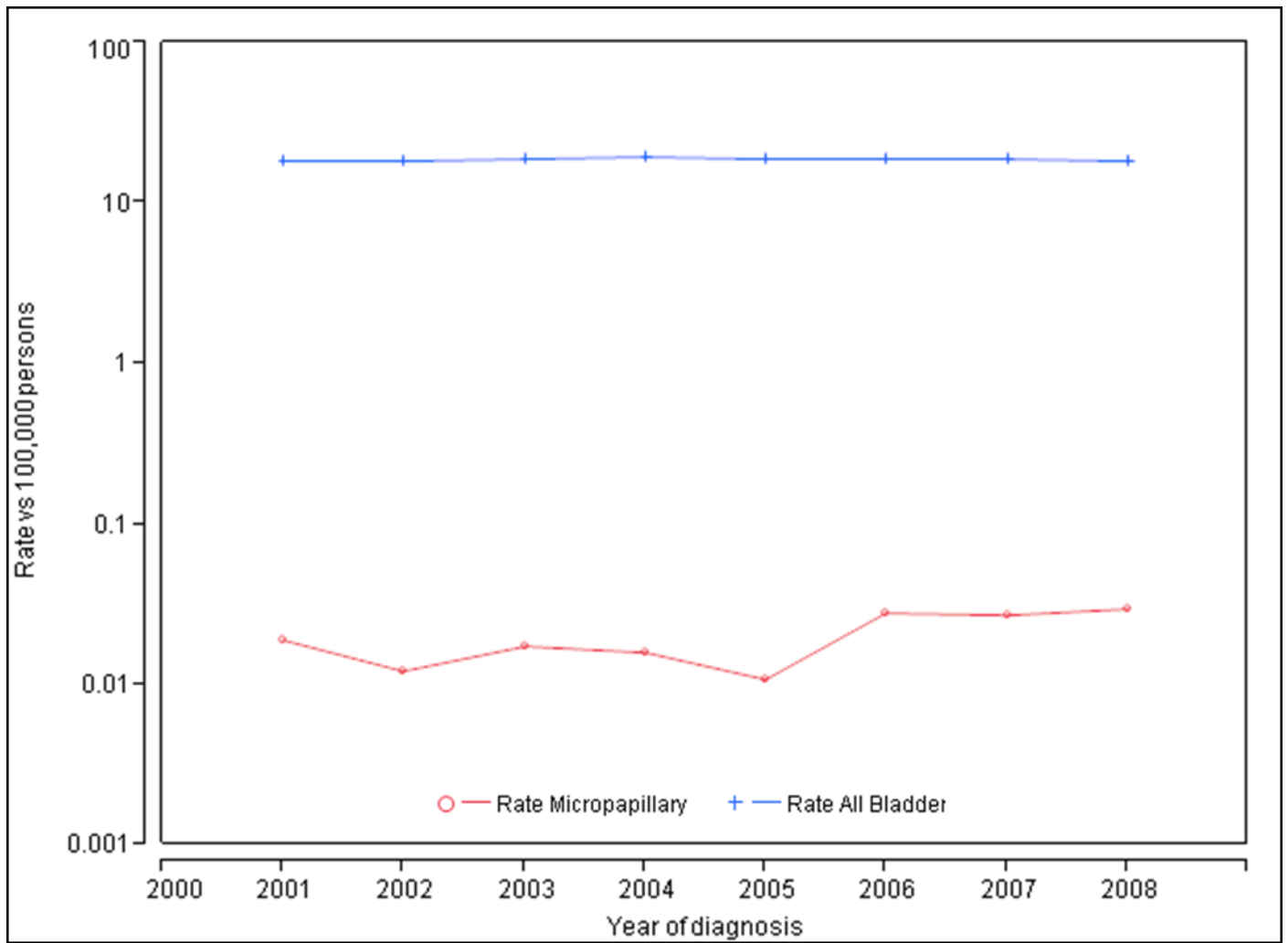
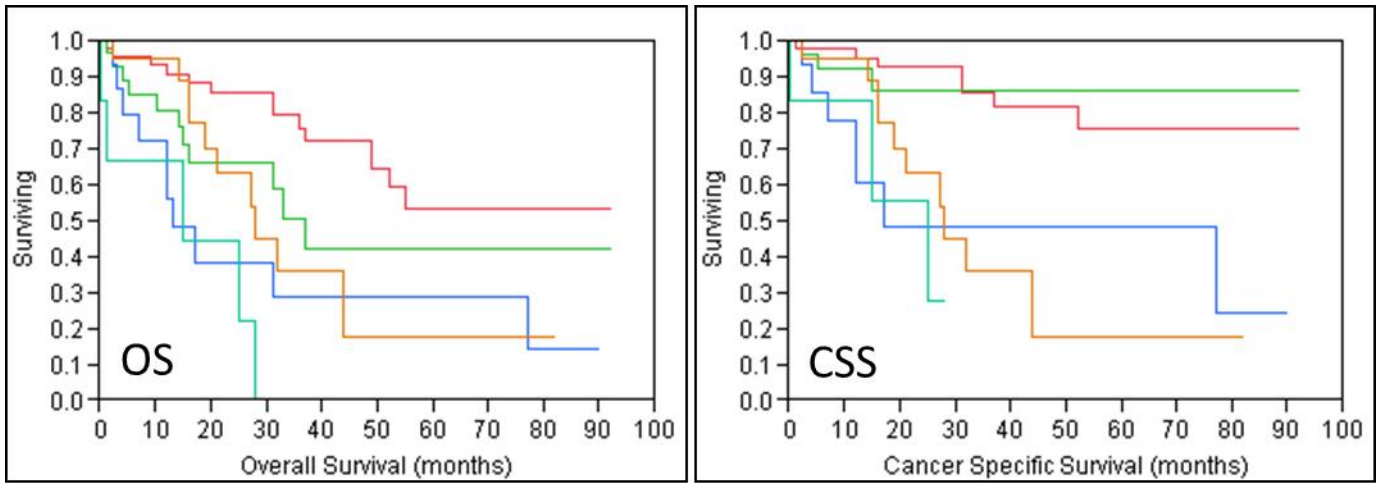


Supplemental Figure 1:



Supplemental Figure 2:



Stage	Median OS (months)	Median CSS (months)
Nonmuscle invasive (Ta/T1/Tis)	DNR	DNR
Muscle invasive (T2)	37	DNR
Locally advanced (T3/T4)	13	17
Nodal disease (N+)	28	28
Metastatic (M1)	15	25

- 1 - Ta/T1/Tis (N0M0) — red line
- 2 - T2 (N0M0) — green line
- 3 - T3/T4 (N0M0) — blue line
- 4 - N+M0 — orange line
- 5 - M1 — cyan line

Supplemental Figure 3:

