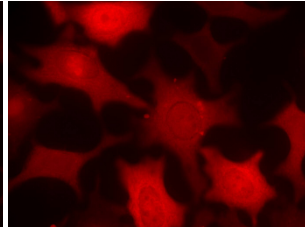
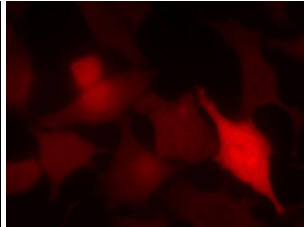
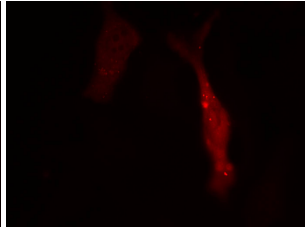
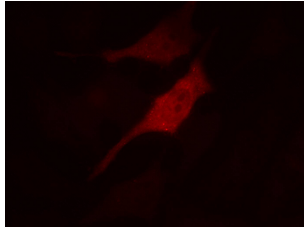
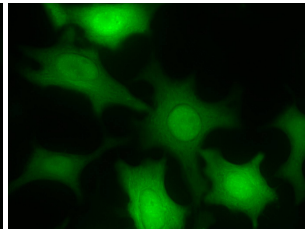
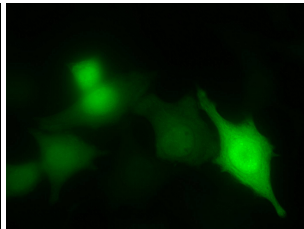
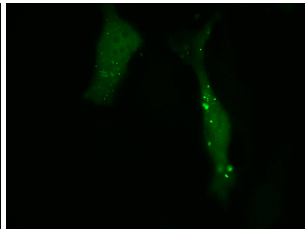
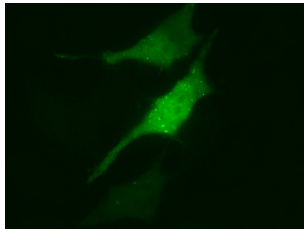
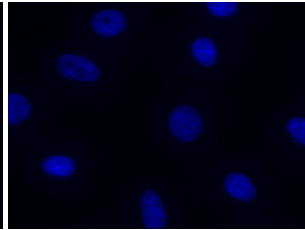
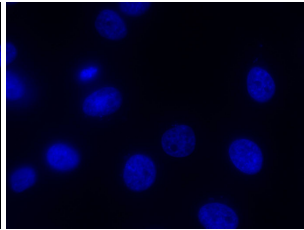
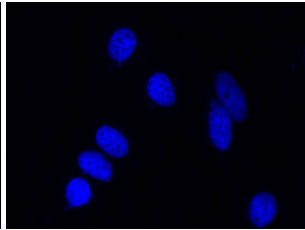
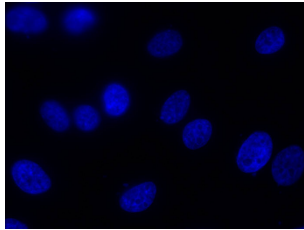
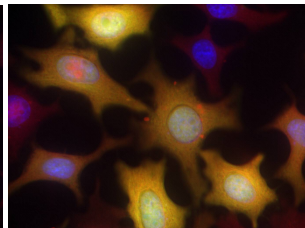
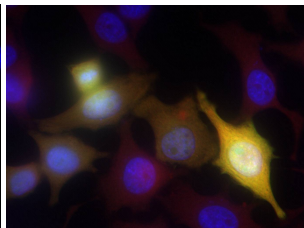
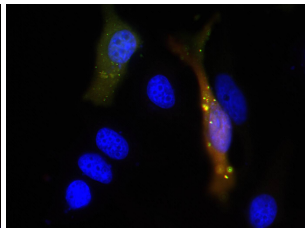
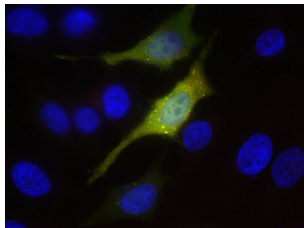


2F12-EGFP**2G4-EGFP****9E10****GFP****DAPI****Merge**

Expression of scFv-EGFP fusions in transiently transfected HeLa cells

HeLa cells were transfected with *c-myc* tagged scFv-EGFP constructs in plasmid pCMV-SN-EGFP. After fixation with methanol, scFv expression was revealed by immunofluorescence microscopy using a TRITC-conjugated 9E10 anti-*c-myc* monoclonal antibody (Santa Cruz Biotechnology) at 2 $\mu\text{g}/\text{ml}$ (first line) or by fluorescence microscopy using the GFP signal (second line). Nuclei were visualized using DAPI (third line). The fourth line shows the merge of the three signals. Two fields are shown for each construct.