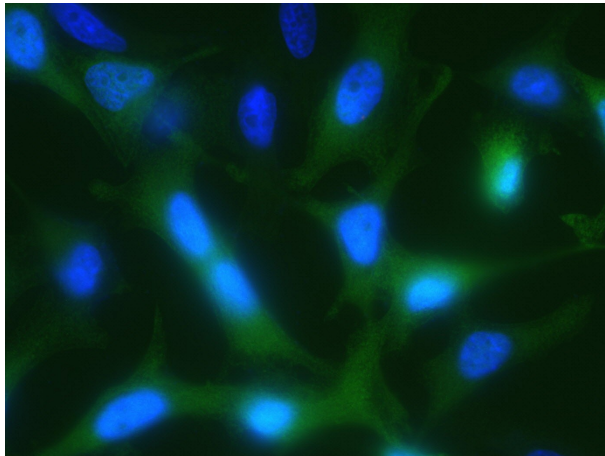
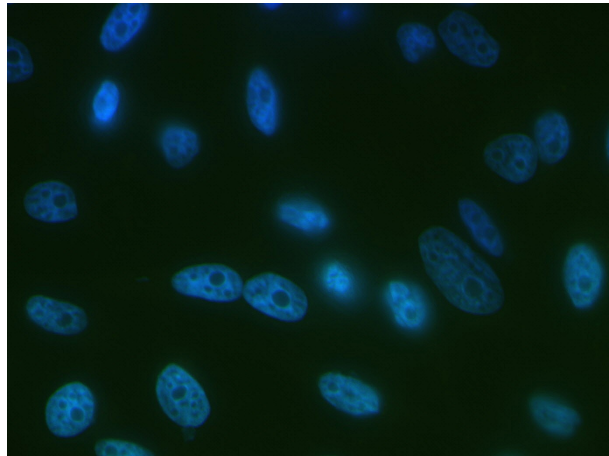
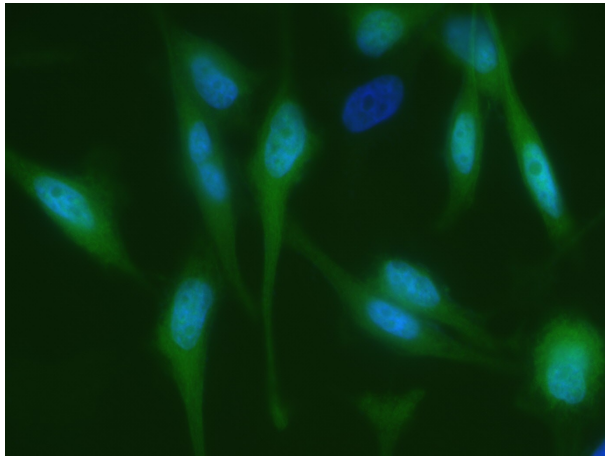
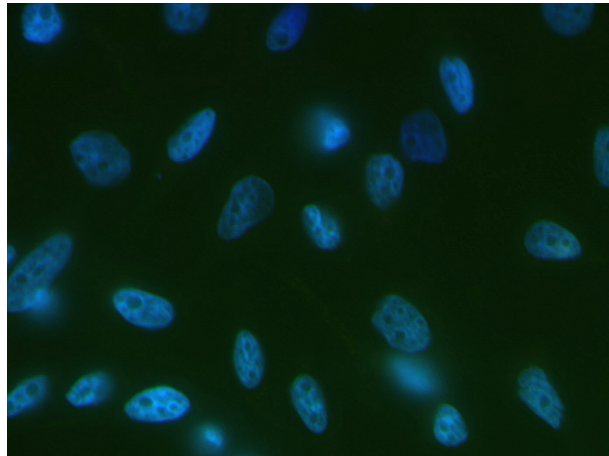


2F12-EGFP**2G4-EGFP**

Retroviral expression of scFv-EGFP fusions in HeLa cells

HeLa cells were infected with retrovirus containing 2F12-EGFP and 2G4-EGFP fusions. After fixation with methanol, scFv expression was revealed by fluorescence microscopy using the GFP signal (green). Nuclei were visualized using DAPI (blue). Two fields are shown for each construct.