

## **SUPPLEMENTARY INFORMATION**

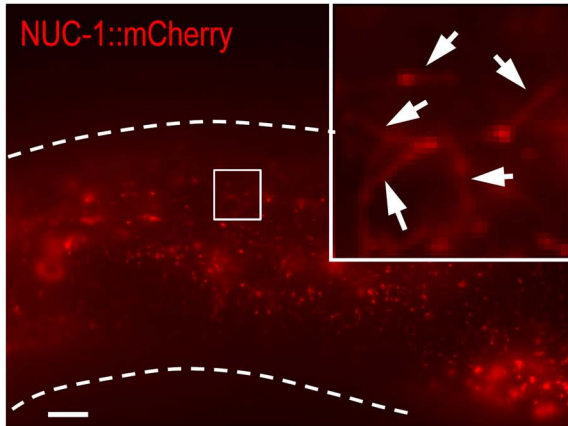
### **SUPPLEMENTAL FIGURE LEGENDS**

**Supplemental Figure S1.** Lysosomal tubular structures are impaired in *arl-8* mutants. Fluorescence (not confocal) images of *control(RNAi)* and *arl-8(RNAi)* animals expressing NUC-1::mCherry. The outline of the adult hermaphrodites is indicated by a dotted line. Insets show enlarged views of the areas indicated by white rectangles. Many NUC-1::mCherry-labeled tubular structures are observed in *control(RNAi)* animals (*arrows*), whereas no apparent tubular structures are observed in *arl-8(RNAi)* animals. Bars, 10  $\mu$ m.

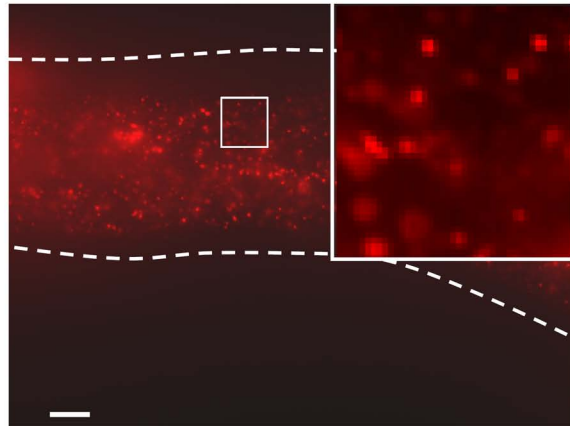
### **SUPPLEMENTAL MOVIE LEGENDS**

**Supplemental Movie 1.** Phagosomal localization of ARL-8 precedes phagolysosome formation. The movie represents a time-lapse imaging of a wild-type animal expressing both ARL-8::GFP and NUC-1::mCherry. Images were recorded at 4 min intervals.

*control(RNAi)*



*arl-8(RNAi)*



**Supplemental Figure S1**