

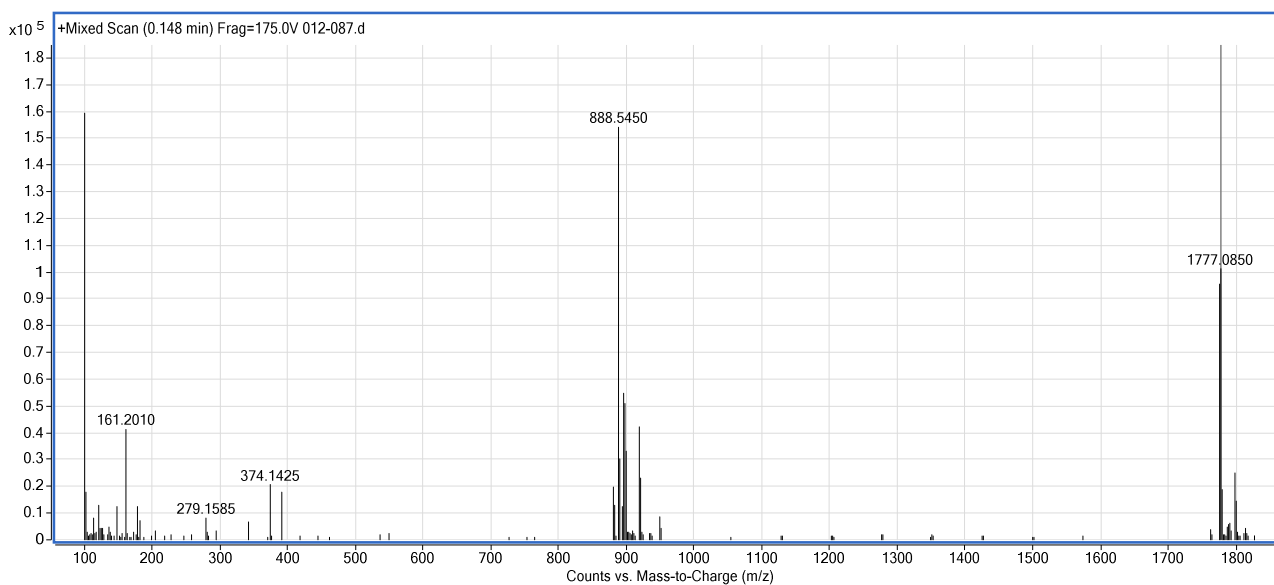
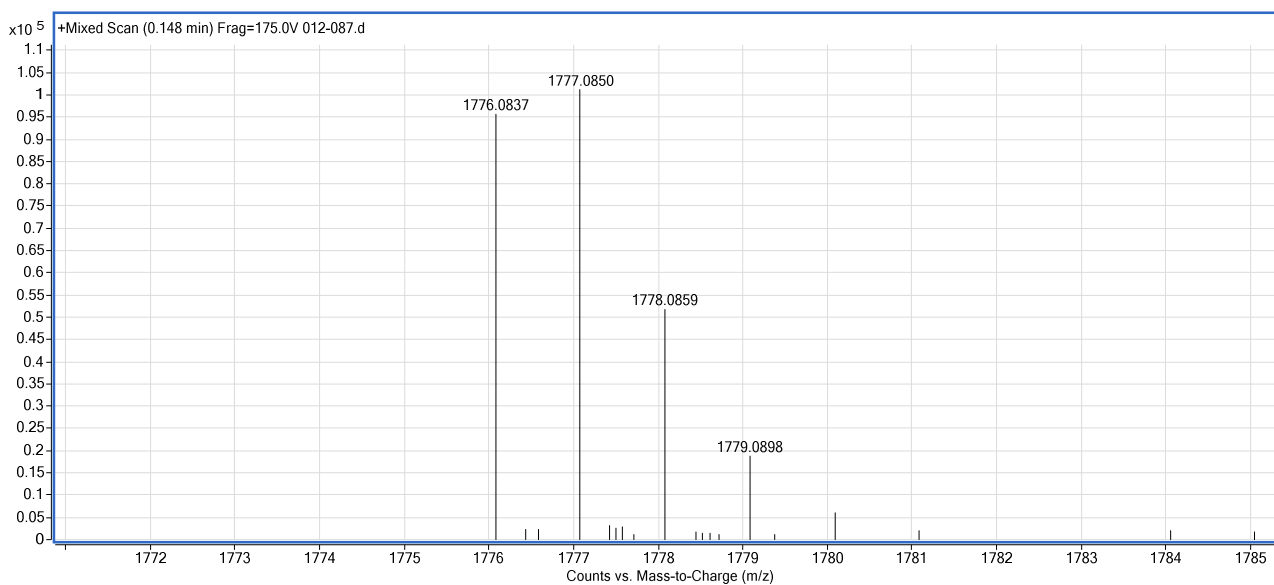
A**B**

Figure S11. High resolution mass spectrum of xantholysin A. (A) Full mass spectrum. (B) Zoom on the [M+H]⁺ molecular ion peaks. Expected exact mass of xantholysin A (C₈₄H₁₄₆N₁₈O₂₃) + H⁺: 1776.0881 Da; observed exact mass of xantholysin A + H⁺: 1776.0837 Da.

$$\Delta = \frac{1776.0881 - 1776.0837}{1776.0881} \times 10^6 \text{ ppm} = 2.5 \text{ ppm}$$