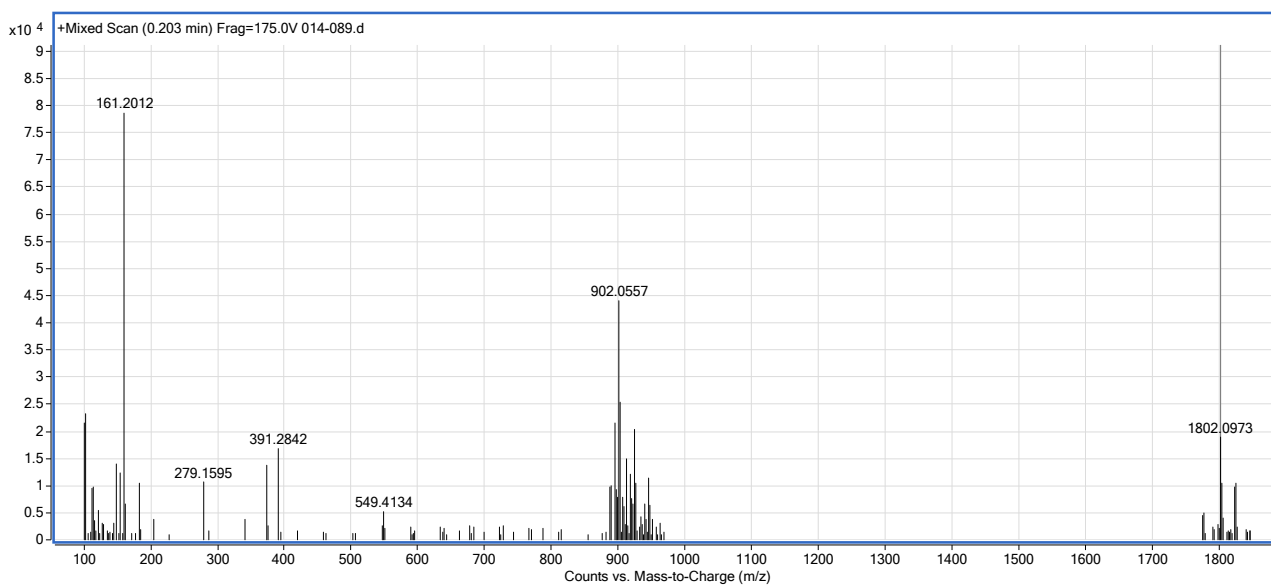
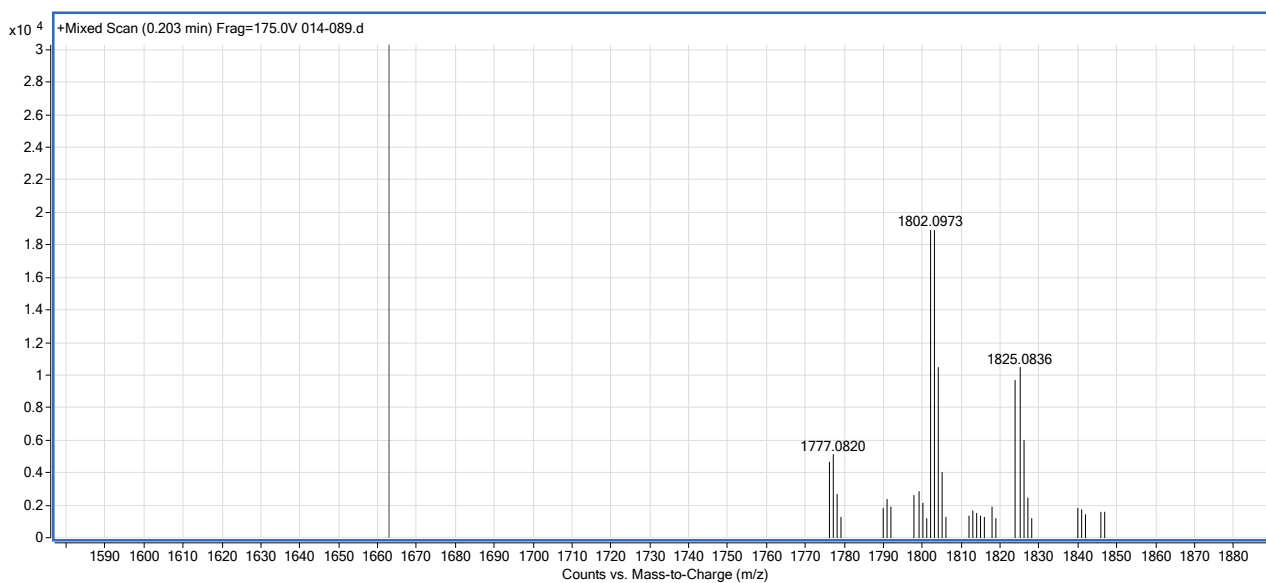


**A****B**

**Figure S16. High resolution mass spectrum of xantholysin C.** (A) Full mass spectrum. (B) Zoom on the  $[M+H]^+$  and  $[M+Na]^+$  molecular ion peaks. Expected exact mass of xantholysin C ( $C_{86}H_{148}N_{18}O_{23}$ ) +  $H^+$ : 1802.1037 Da; observed exact mass of xantholysin C +  $H^+$ : 1802.0973 Da.

$$\Delta = \frac{1802.1037 - 1802.0973}{1802.1037} \times 10^6 \text{ ppm} = 3.6 \text{ ppm}$$