

Supporting Information

Acquati et al. 10.1073/pnas.1222079110

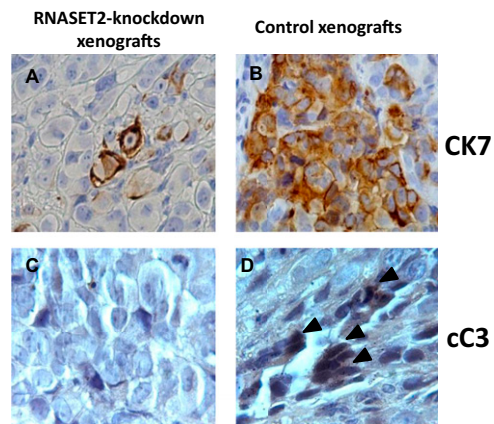


Fig. S1. Parental and *RNASET2*-silenced OVCAR3-derived tumor sections were stained with cytokeratin 7 (*A* and *B*) and activated caspase 3 (*C* and *D*) as markers for cell differentiation and apoptosis, respectively.

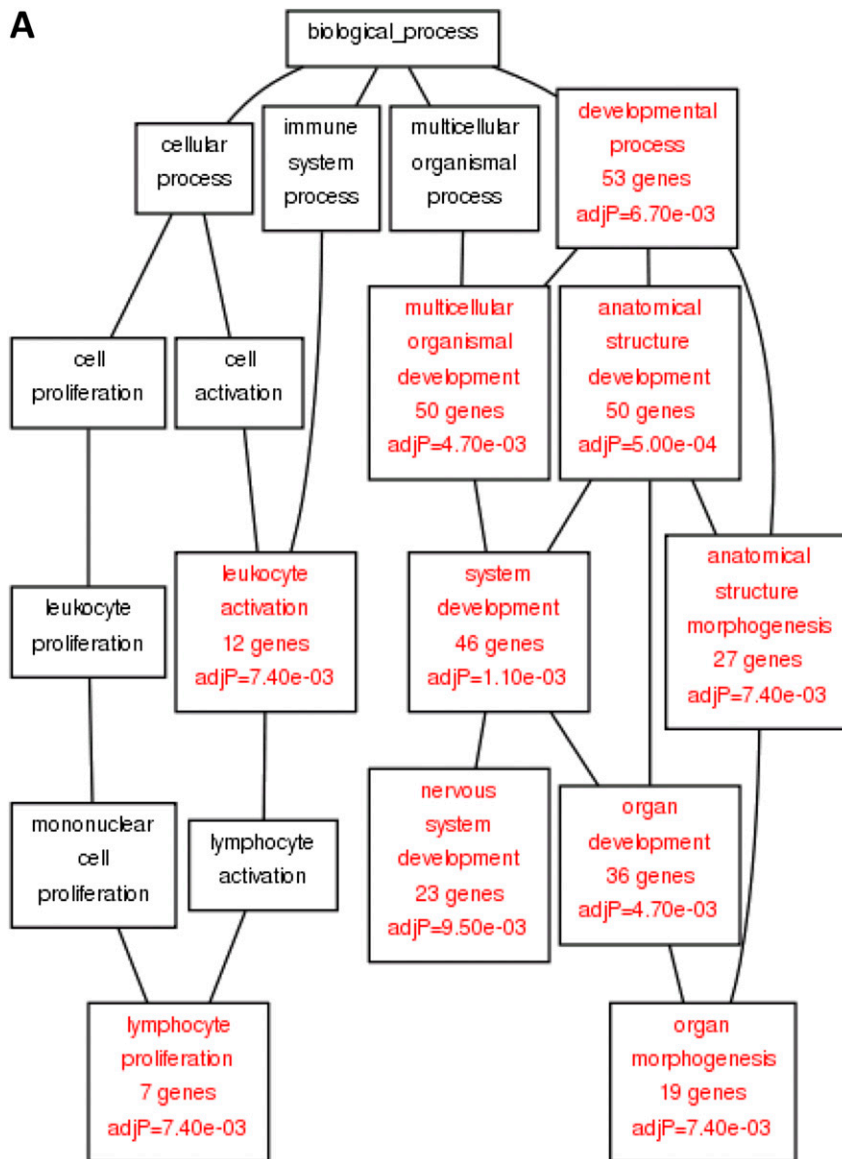


Fig. S3. (Continued)

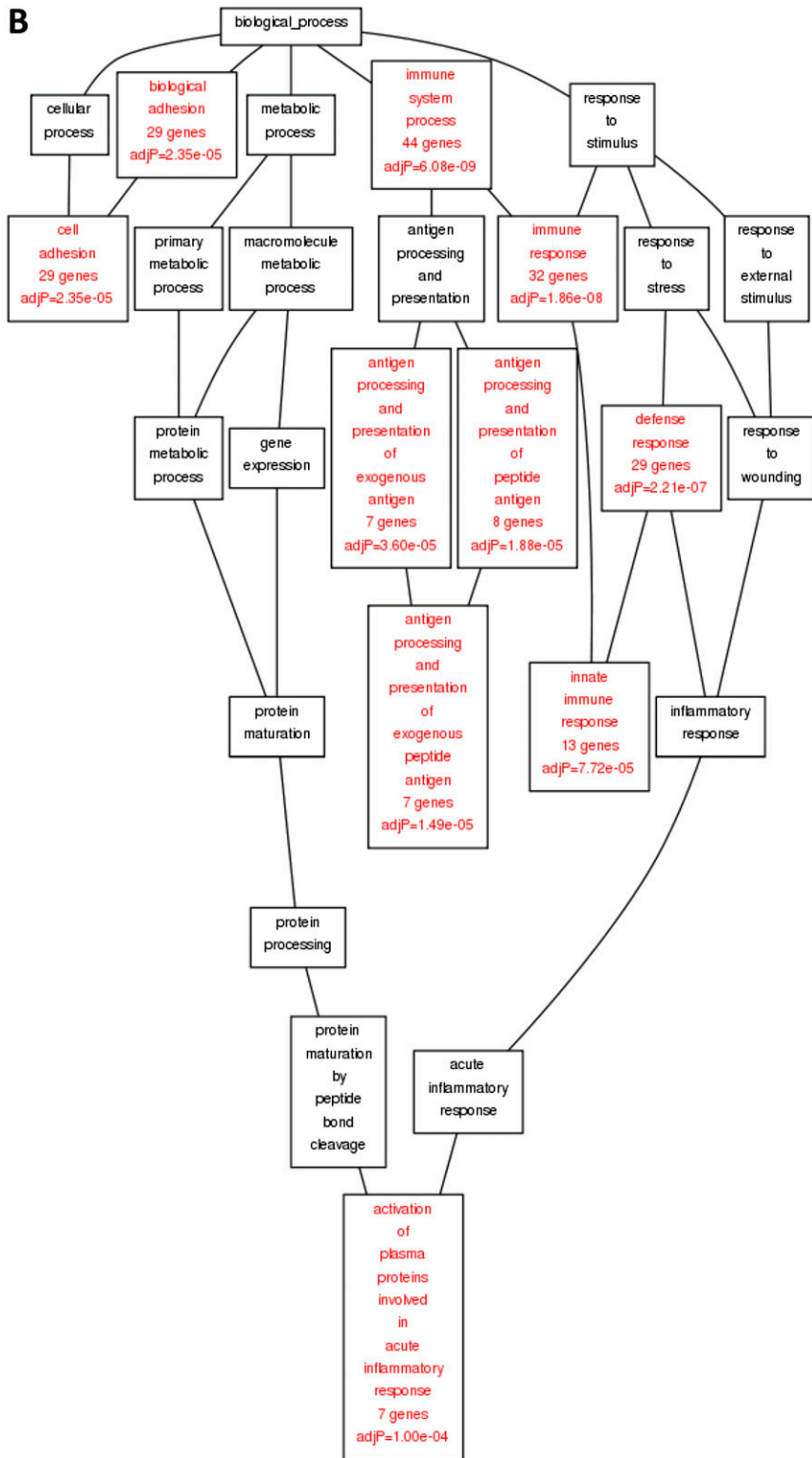


Fig. S3. Gene Ontology analysis results for the enriched “biological process” entries for human (A) and murine (B) genes following analysis of OVCAR3 xenograft gene expression profile obtained by microarray hybridization.

Table S1. Histological and IHC data from RNASET2-silenced and control tumor xenografts

| OVCAR3 clone | Growth pattern* | Cell morphology | Mitotic index [†] | Ki-67 | CK7 [‡] | Apoptosis [§] | CD45 [§] | CD68 [§] | NOS-1 [§] | Dectin 1 [§] | RNASET2 expression |
|-----------------------|---------------------|-----------------|----------------------------|-------|------------------|------------------------|-------------------|-------------------|--------------------|-----------------------|--------------------|
| Sh RNASET2 clone 1 | Diffuse/solid nests | L, P | 28 | 40 | — | 1+ | 1+ | 1+ | 1+ | +/- | Negative |
| Sh RNASET2 clone 7 | Diffuse/solid nests | L, P | 26 | 35 | + | 2+ | 1/2+ | — | +/- | 1+ | Negative |
| Sh RNASET2 clone 7 | Diffuse/solid nests | L, P | 35 | 50 | + | 1+ | 1+ | 1+ | +/- | 1/2+ | Negative |
| Sh RNASET2 clone 11 | Diffuse | L, P | 32 | 45 | + | 2+ | 2+ | 1+ | — | 2+ | Negative |
| Sh scrambled clone 5 | Nests/micronests | L, P, C | 23 | 30 | + | 3+ | 2+ | 2+ | 2+ | 1/2+ | Positive |
| Sh scrambled clone 5 | Nests | L, P, C | 14 | 25 | ++ | 2+ | 2/3+ | 1/2+ | 2+ | 2/3+ | Positive |
| Sh scrambled clone 11 | Nests/micronests | L, A | 16 | 40 | +++ | 2+ | 3+ | 2+ | 1/2+ | 2+ | Positive |
| Sh scrambled clone 11 | Solid nests | L, C | 25 | 25 | ++ | 2+ | 2+ | 2+ | 3+ | 2/3+ | Positive |
| Sh scrambled clone 3 | Solid nests | L, A, C | 22 | 30 | ++ | 3+ | 3+ | 2+ | 3+ | 2+ | Positive |

A, angulated; C, clear; IHC, immunohistochemistry; L, large; P, polygonal.

*Indicates tumor structure, namely diffuse and/or forming nests/micronests. When both patterns were present, the former is the prevailing type.

[†]Number of mitotic figures 10× high-power fields.

[‡]—, absent; +, few cells stained; ++, moderate number of cells stained; +++, many cells stained.

[§]—, absent; 1+, scant; 2+, moderate; 3+, abundant.

Other Supporting Information Files

[Dataset S1 \(XLS\)](#)

[Dataset S2 \(XLS\)](#)

[Dataset S3 \(XLS\)](#)

[Dataset S4 \(XLS\)](#)

[Dataset S5 \(XLS\)](#)