

Breakpoint-specific multiplex polymerase chain reaction allows the detection of *IKZF1* intragenic deletions and minimal residual disease monitoring in B-cell precursor acute lymphoblastic leukemia

Aurélie Caye,¹ Kheïra Beldjord,^{2,3} Kelly Mass-Malo,¹ Séverine Drunat,¹ Jean Soulier,^{2,3} Virginie Gandemer,⁴ André Baruchel,^{3,5} Yves Bertrand,⁶ Hélène Cavé,^{1,3} and Emmanuelle Clappier^{1,3}

¹Département de Génétique, UF de Génétique Moléculaire, Hôpital Robert Debré, APHP; ²Service d'Hématologie Biologique, Hôpital Saint-Louis, APHP, Paris; ³Université Paris Diderot-Paris 7; ⁴Service d'Hématologie Pédiatrique, CHU-Hôpital Sud, Rennes; ⁵Service d'Hématologie Pédiatrique, Hôpital Robert Debré, APHP, Paris; and ⁶Institut d'Hématologie et d'Oncologie Pédiatrique, Lyon

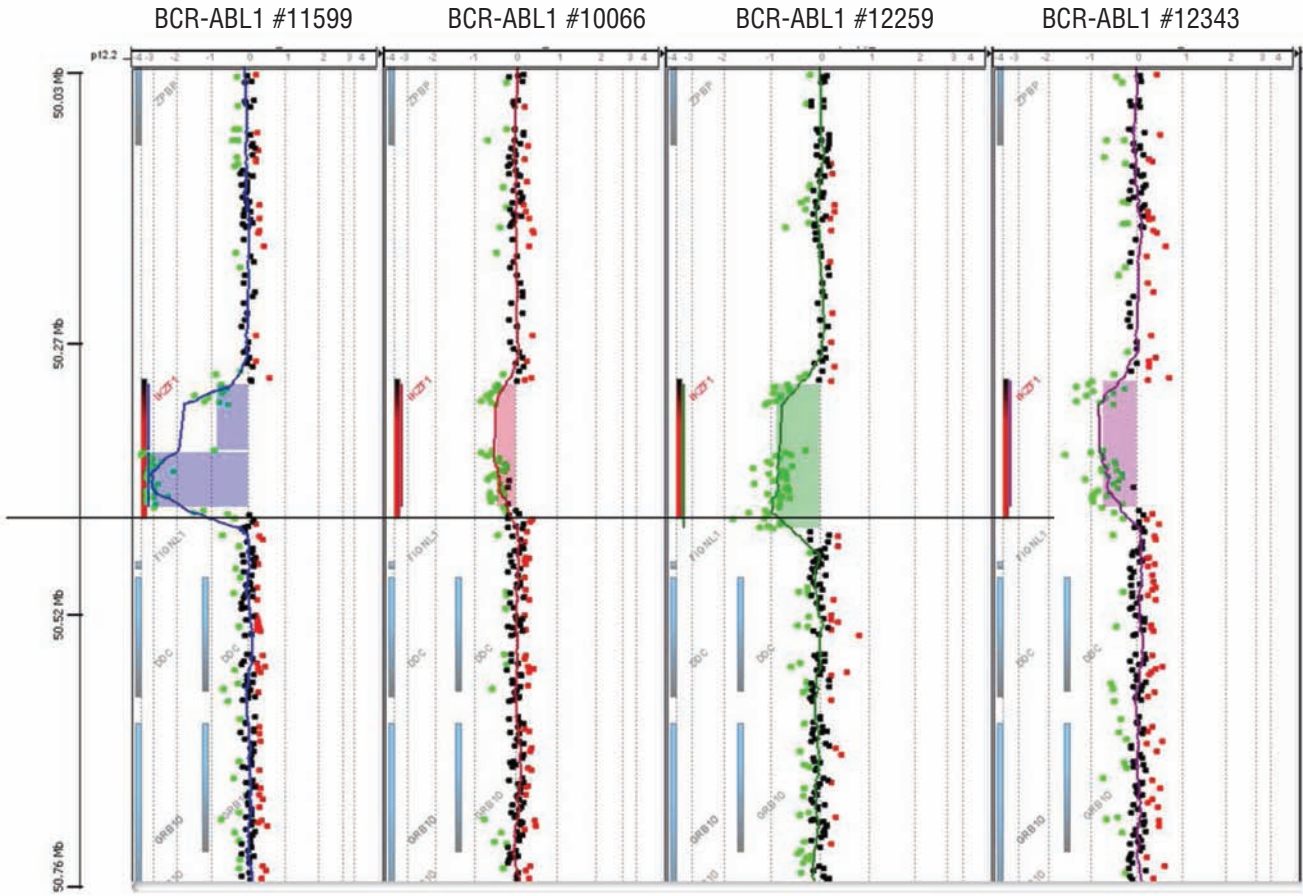
©2013 Ferrata Storti Foundation. This is an open-access paper. doi:10.3324/haematol.2012.073965

Online Supplementary Table S1i. Distal breakpoints centromeric to *IKZF1* exon 8.

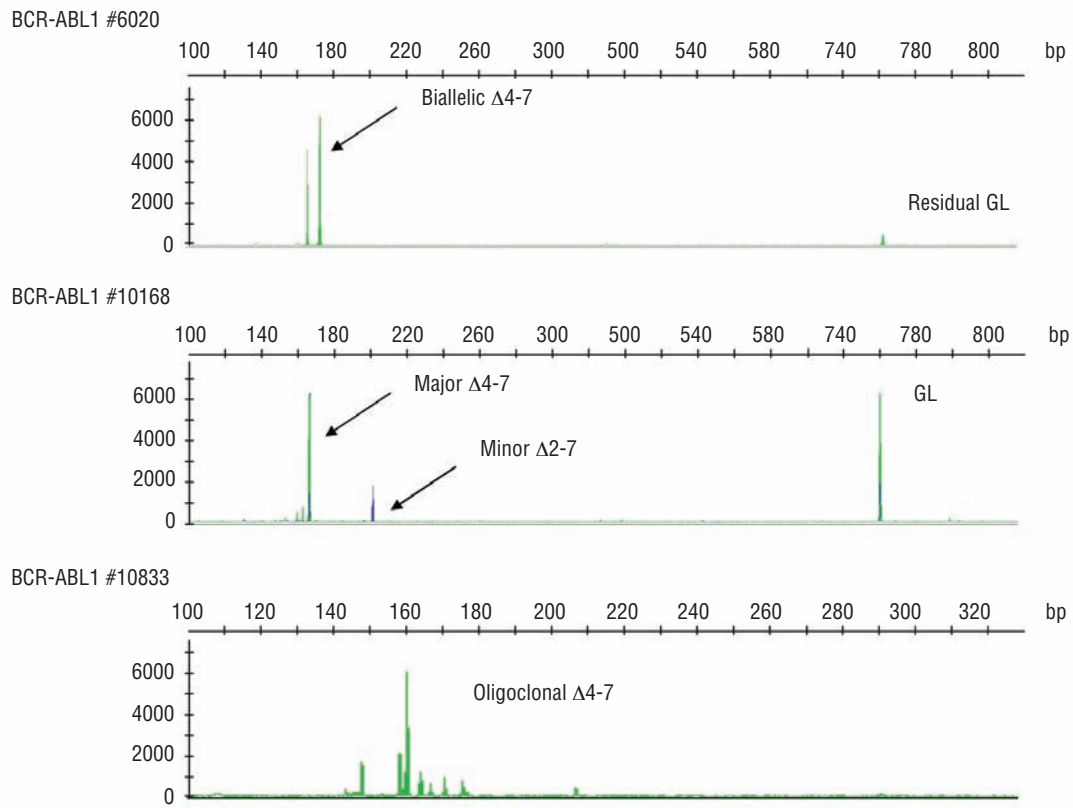
ALL identifier	Type of deletion	Additional nucleotides	Position	Distal
CGH #1	Δ(4-8)	–	50484458	gacatgctggctctctccctgtagccgagac
CGH #2	Δ(4-8)	acaccttcgcg	50484456	ctgacatgctggctctctccctgtagccgagac
CGH #3	Δ(4-8)	cccgtggga	50483900	ttctttcttccccacatcaagggtctacgtggaatagtg
BCR-ABL1 #4151 allele 2	Δ(4-8)	cccccg	50484460	catgctggctctctccctgtagccgagac
BCR-ABL1 #8987	Δ(4-8)	gg	50484451	gtgggctgacatgctggctctctccctgtagccgagac
BCR-ABL1 #9653	Δ(4-8)	aaggg	50484453	gggctgacatgctggctctctccctgtagccgagac
BCR-ABL1 #12259 allele 2	Δ(4-8)	ctgtggcg	50484458	gacatgctggctctctccctgtagccgagac
BCR-ABL1 #12259 allele 1	Δ(2-8)	gt	50484456	ctgacatgctggctctctccctgtagccgagac
BCR-ABL1 #13175	Δ(4-8)	ca	50484453	gggctgacatgctggctctctccctgtagccgagac
BCR-ABL1 #11599 allele 2	Δ(2-8)	ccc	50469606	ccacacatacataggatggctgctgcacctgtagga
Germline			50484447	aggtgtgggctgacatgctggctctctccctgtagccgagac

Online Supplementary Table S1ii. Proximal breakpoints in *IKZF1* intron 1.

ALL identifier	Type of deletion	Proximal	Position	Additional nucleotides
BCR-ABL1 #12259 allele 1	Δ(2-8)	catatgcacacagagcgtgcacaca	50346601	gt
BCR-ABL1 #10066	Δ(2-7)	catatgcacacagagcgtgcacacacacagcatg	50346610	ct
BCR-ABL1 #5192	Δ(2-7)	aaggagattgatgaagtggctccactccagcttacaga	50346975	cc
BCR-ABL1 #2594	Δ(2-7)	gatctaggtcttagaacgtagag	50347368	cttcg
BCR-ABL1 #4006 allele 1	Δ(2-7)	gatctaggtcttagaacgtagag	50347369	cgggacgc
BCR-ABL1 #10168 allele 2	Δ(2-7)	gatctaggtcttagaacgtagagtttcagaggatcagc	50347383	ccccaaa
BCR-ABL1 #3128	Δ(2-7)	gatctaggtcttagaacgtagagtttcagaggatcagc	50347383	tcc
BCR-ABL1 #10819	Δ(2-7)	gatctaggtcttagaacgtagagtttcagaggatcagcattatac	50347390	ccc
BCR-ABL1 #11599 allele 2	Δ(2-8)	agccattgtgttctccgtctccctgct	50348575	ccc



Online Supplementary Figure S1. Array-CGH plots showing *IKZF1* intragenic deletions with variant breakpoints mapped. Case #11599 has $\Delta(2-8)$ and $\Delta(4-7)$; case #10066 has $\Delta(2-7)$; case #12259 has $\Delta(2-8)$ and minor $\Delta(4-8)$; case #12343 has $\Delta(2-7)$. Moving average is in colored full line; aberration prediction by ADM-2 algorithm is shown in transparent color.



Online Supplementary Figure S2. Genescan patterns showing examples of ALL cases harboring multiple *IKZF1* intragenic deletions. GL, germline, indicates the 760 bp control amplicon.