

**Supplementary Figure 1:**

The graph represents values obtained from digital densitometric analysis of western blot lane corresponding to protein analyzed from empty vector and miR-632 expressor transfected cells in Figure 1B normalized to respective  $\beta$ -actin.

**Supplementary Figure 2:**

The graph represents values obtained from digital densitometric analysis of western blot lane corresponding to protein analyzed from control treated or X-miR treated MDA-MB-231 cells normalized to respective  $\beta$ -actin.

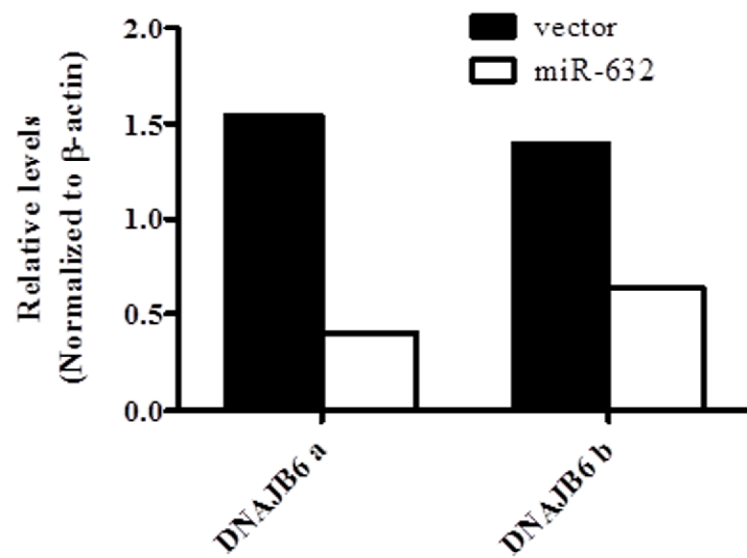
**Supplementary Figure 3:**

Laminin V staining of 3-D growths to assess integrity of basement membrane.

NOTE: The difference in colors of MCF10AT and MDA-MB-231 structures correspond to different secondary antibodies used.

**Supplementary Figure 4:**

- (I) Western blot analysis of MFC10AT cells transfected with miR-632 to confirm silencing of DNAJB6 by miR-632. Digital densitometric analysis of the band intensity is presented as quantitative indicator of effect of miR-632 on DNAJB6 spliced variants.
- (II) qRT-PCR analysis of MDA-MB-231 cells treated with X-miR-632 (100 nM) or control for levels of Zeb2, SLUG and E-cadherin. GAPDH was using as calibration control. Assay was performed in triplicate and repeated once. Error bars represent SEM.

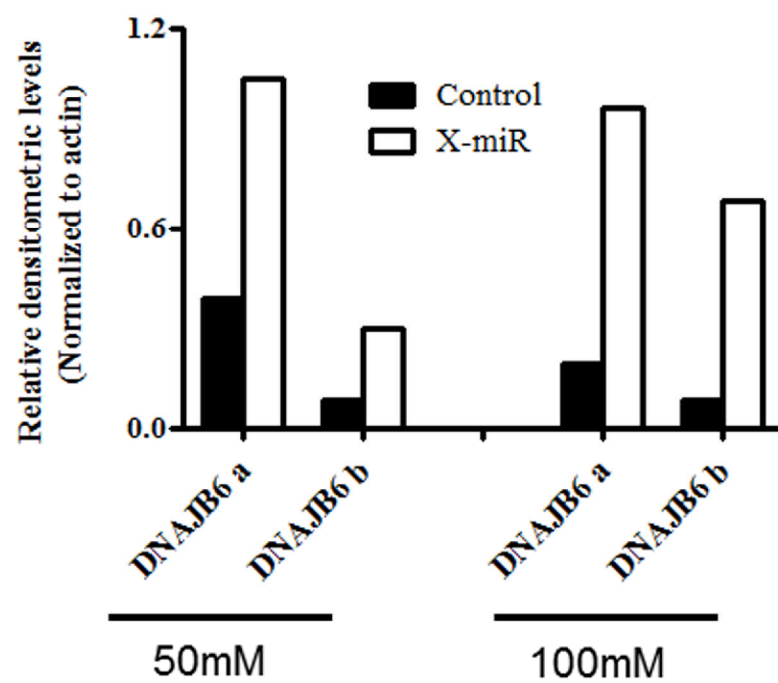


**Supplementary Figure 1**

Type of file: figure

Label: 7

Filename: figure\_7.tif

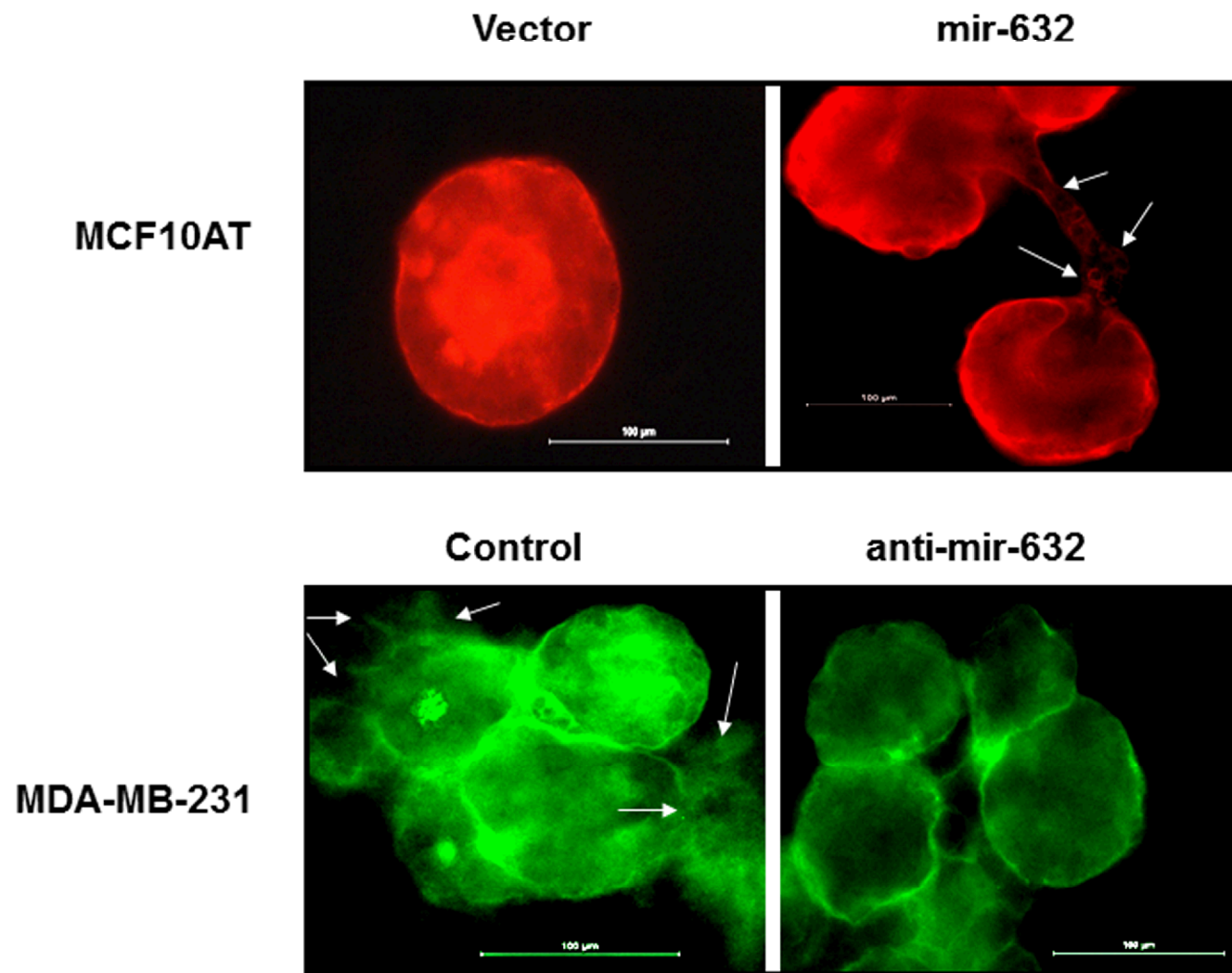


**Supplementary Figure 2**

Type of file: figure

Label: 8

Filename: figure\_8.tif



**Supplementary Figure 3**

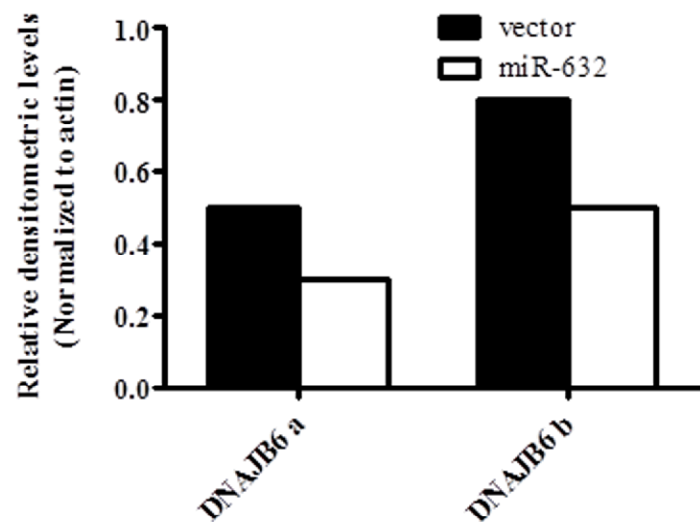
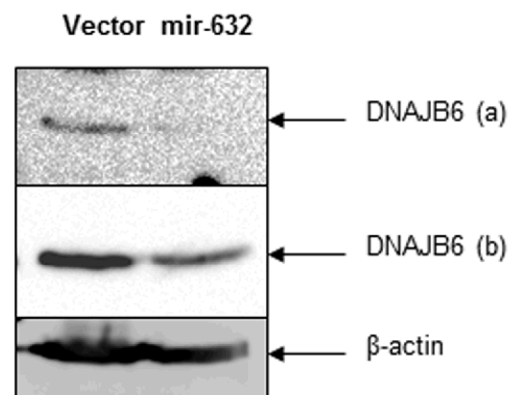
Type of file: figure

Label: 9

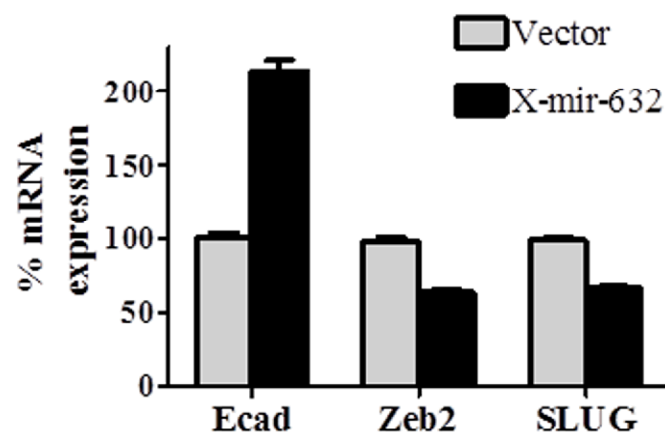
Filename: figure\_9.tif



(I)



(II)



Supplementary Figure 4