

# Identification of stable benzo[*a*]pyrene-7,8-dione-DNA adducts in human lung cells

Meng Huang,<sup>†</sup> Ian A. Blair,<sup>†,‡</sup> and Trevor M. Penning<sup>\*,†,‡</sup>

<sup>†</sup> Center of Excellence in Environmental Toxicology and <sup>‡</sup> Center for Cancer Pharmacology, Department of Pharmacology, Perelman School of Medicine, University of Pennsylvania, Philadelphia, Pennsylvania 19104-6160, United States

## Supporting Information

Extracted ion chromatograms of pseudo SRM transitions (Figure S-1) for hydrated-B[*a*]P-7,8-dione-dGuo adducts and hydrated-B[*a*]P-7,8-dione-dAde adducts prepared synthetically according to the method reported by Balu, N. *et al.*<sup>12</sup>

MS<sup>3</sup> chromatograms and spectra of the protonated hydrated-B[*a*]P-7,8-dione-dGuo adduct (*m/z* 566) (Figure S-2) and the protonated hydrated-B[*a*]P-7,8-dione-dAde adduct (*m/z* 550) (Figure S-4) prepared synthetically using B[*a*]P-7,8-dione and salmon testis DNA.

Extracted ion chromatograms of pseudo SRM transitions for B[*a*]P-7,8-dione-dGuo adduct (Figure S-3) and B[*a*]P-7,8-dione-dAde adduct (Figure S-5) prepared synthetically using B[*a*]P-7,8-dione and salmon testis DNA at 0 h and 24h.

**Figure S-1.** Extracted ion chromatograms of pseudo SRM transitions for hydrated-B[a]P-7,8-dione-dGuo adducts (**A**) and hydrated-B[a]P-7,8-dione-dAde adducts (**B**) prepared synthetically according to the method reported by Balu, N. *et al.*<sup>12</sup>

**Figure S-2.** MS<sup>3</sup> chromatogram and spectrum of the protonated hydrated-B[a]P-7,8-dione-dGuo adduct (*m/z* 566) prepared synthetically using B[a]P-7,8-dione and salmon testis DNA.

**Figure S-3.** Extracted ion chromatograms of pseudo SRM transitions for B[a]P-7,8-dione-dGuo adduct prepared synthetically using B[a]P-7,8-dione and salmon testis DNA at 0 h and 24h.

**Figure S-4.** MS<sup>3</sup> chromatogram and spectra of the protonated hydrated-B[a]P-7,8-dione-dAde adduct (*m/z* 550) prepared synthetically using B[a]P-7,8-dione and salmon testis DNA.

**Figure S-5.** Extracted ion chromatograms of pseudo SRM transitions for B[a]P-7,8-dione-dAde adduct prepared synthetically using B[a]P-7,8-dione and salmon testis DNA at 0 h and 24h.

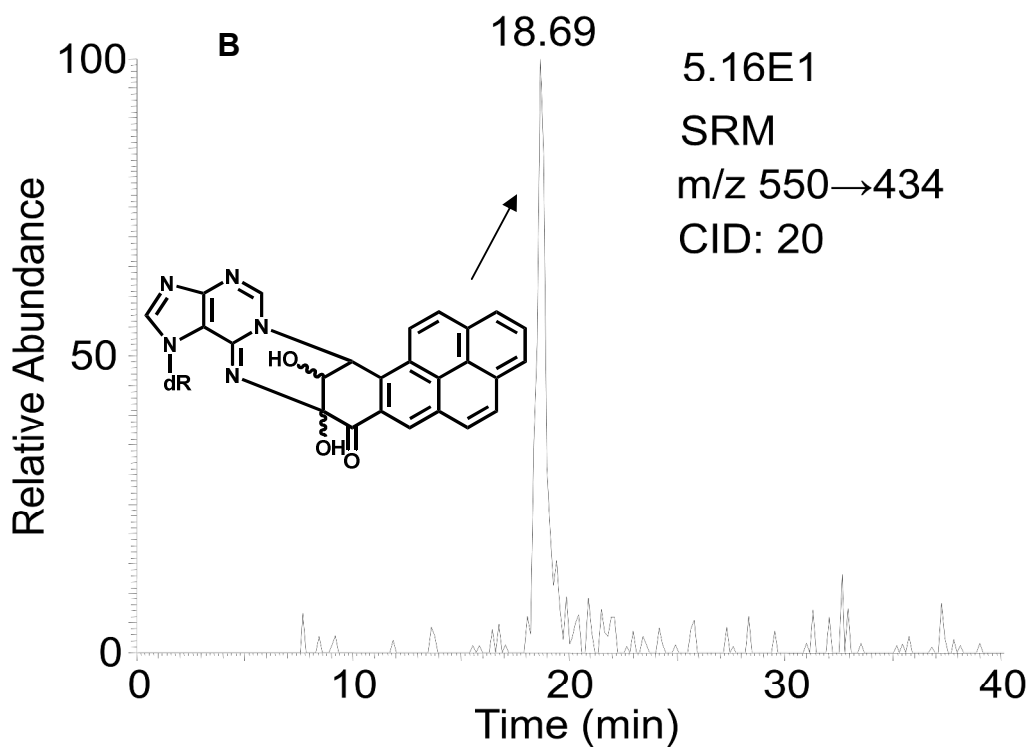
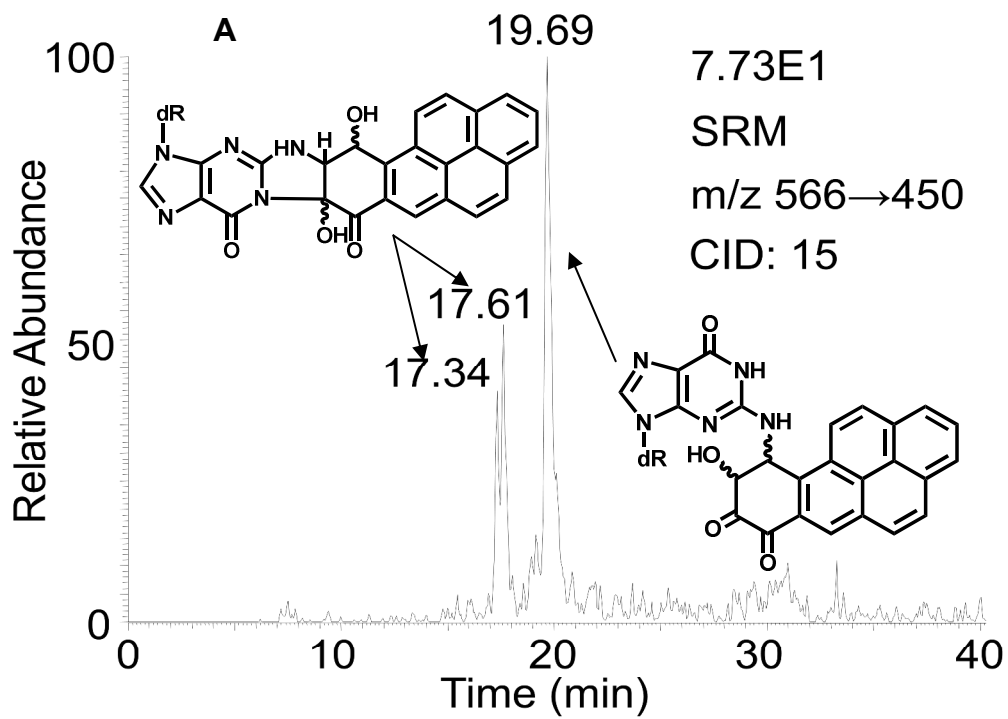


Figure S-1.

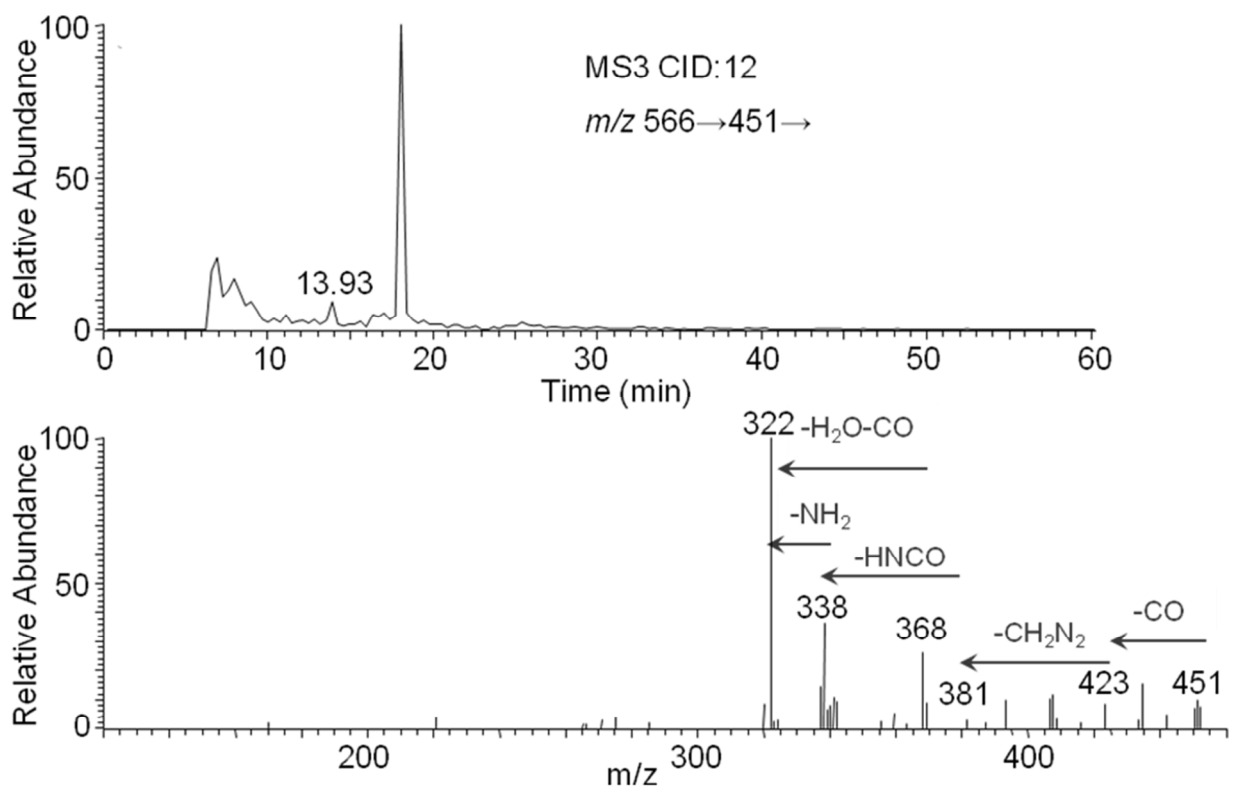


Figure S-2.

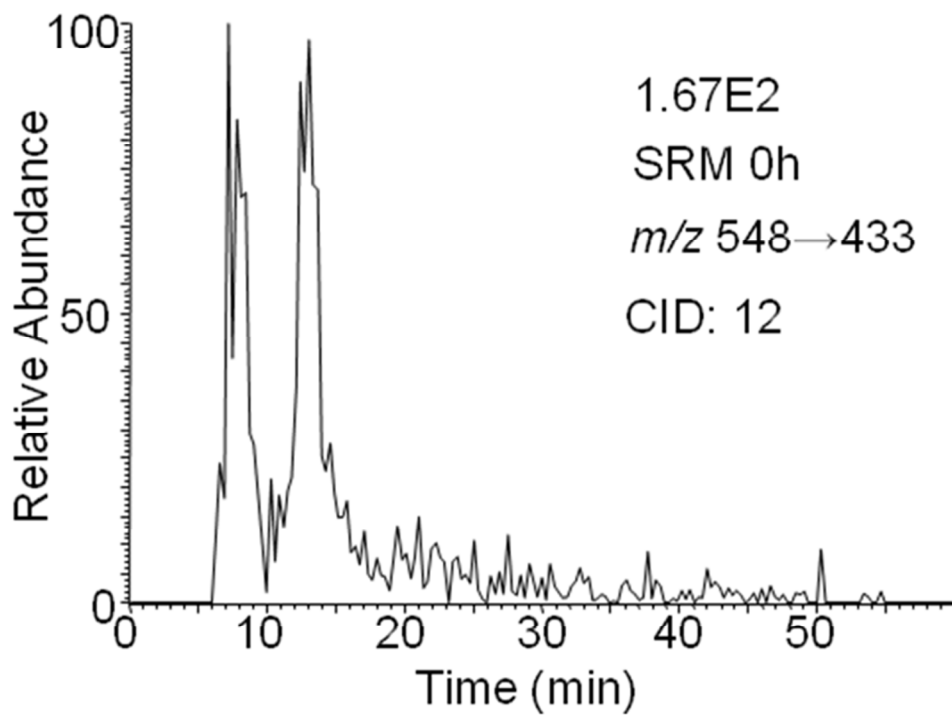
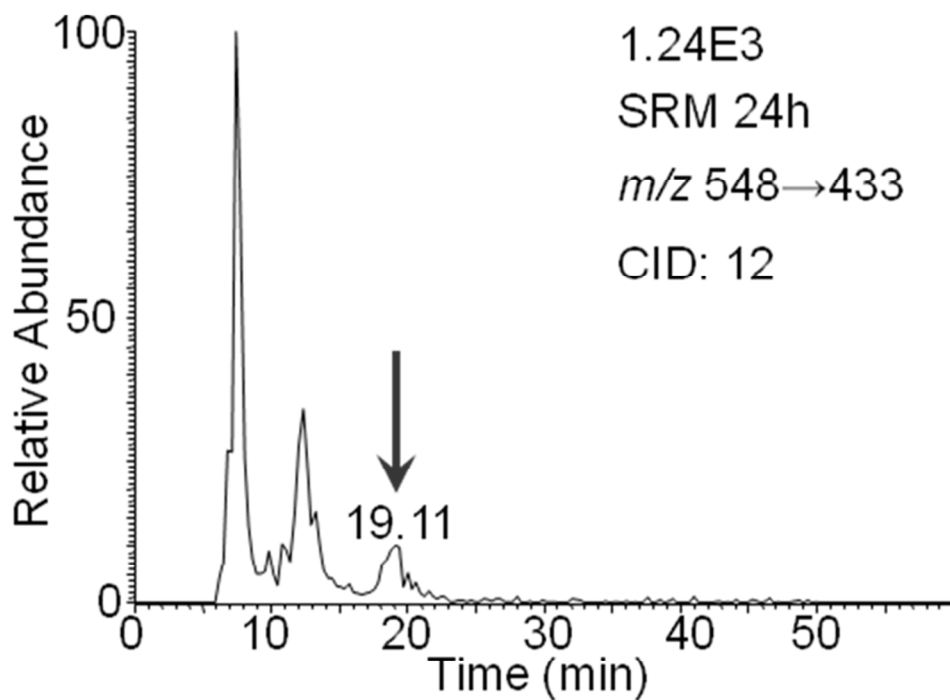


Figure S-3.

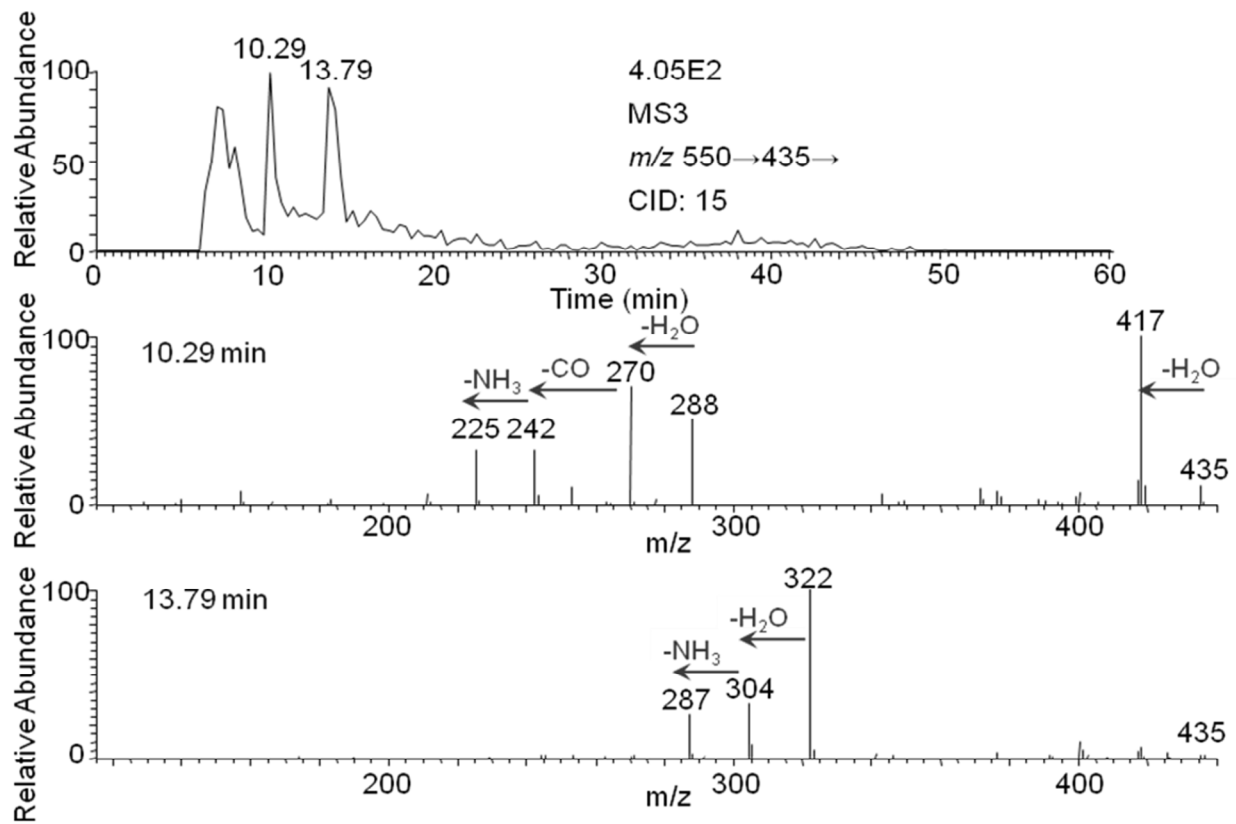


Figure S-4.

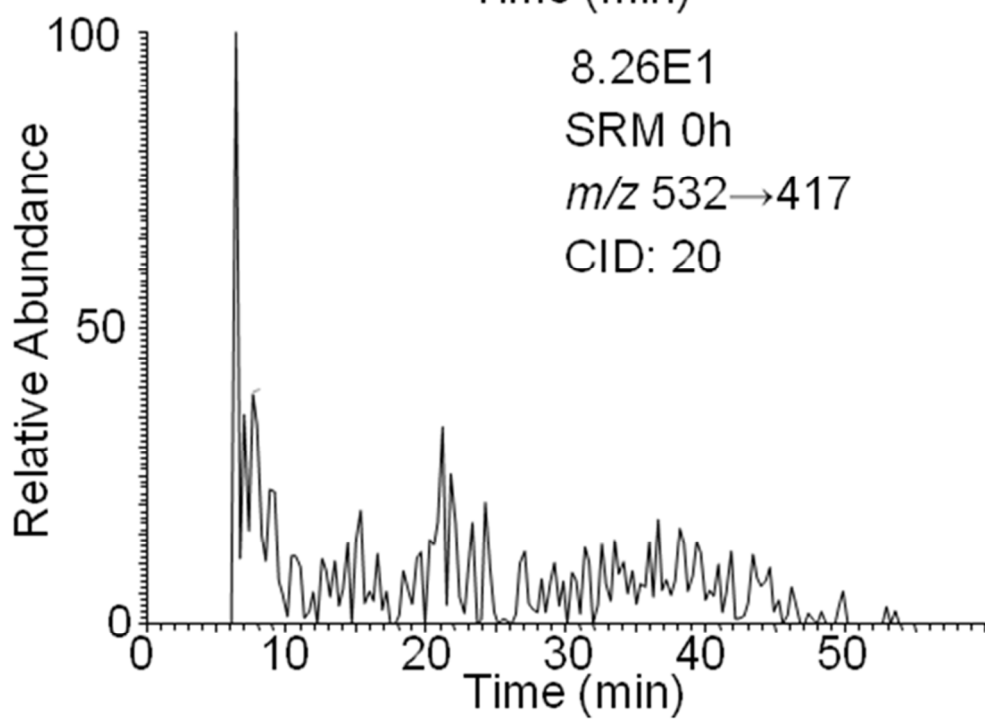
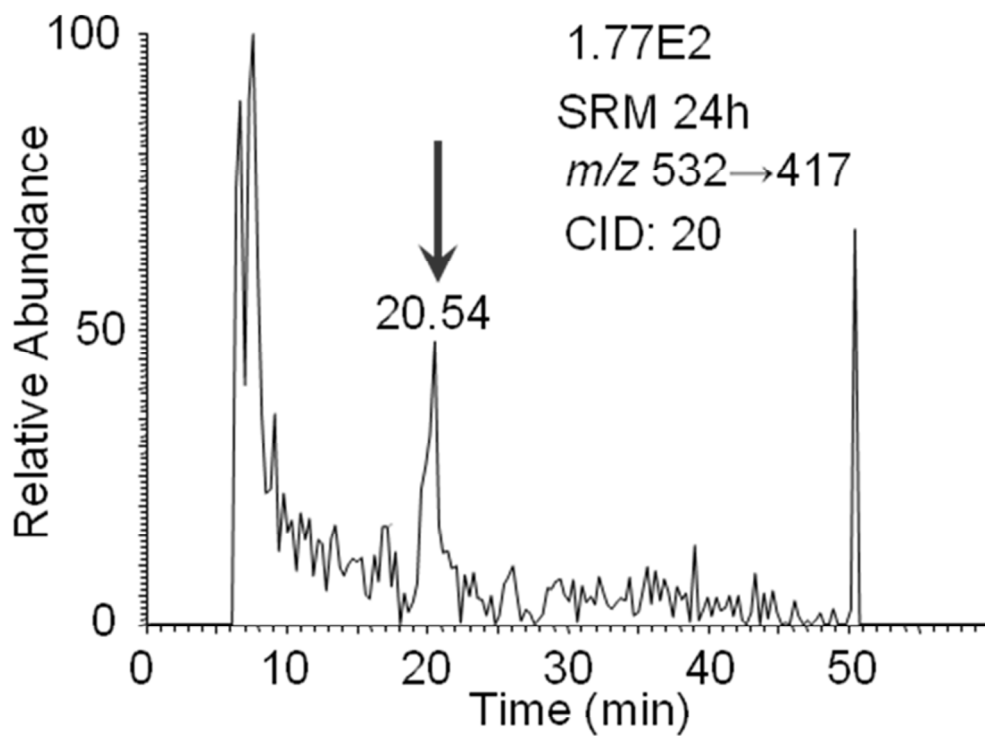


Figure S-5.