



Supplemental Material to:

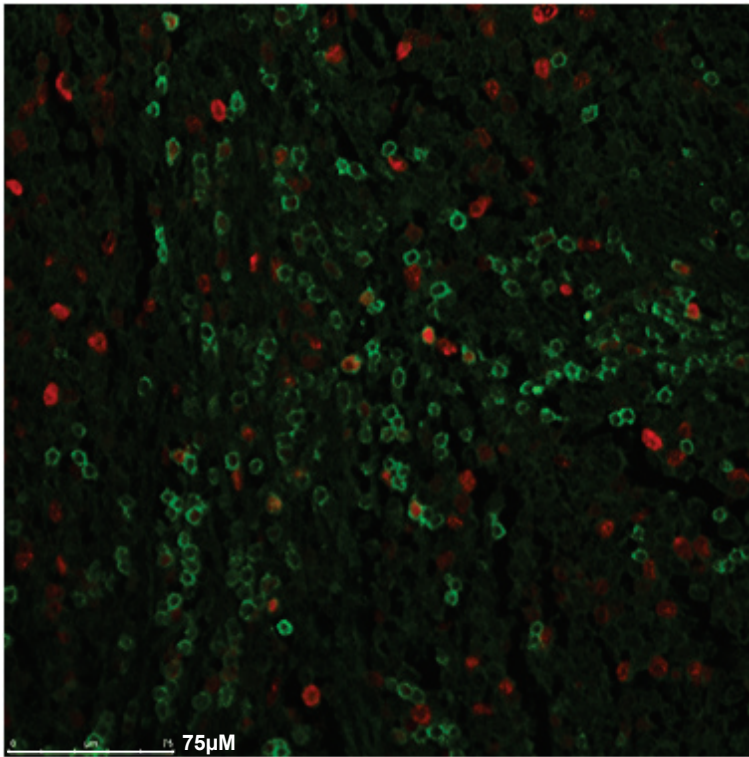
**Lena-Maria Carlson, Anna De Geer, Baldur Sveinbjörnsson,
Abiel Orrego, Tommy Martinsson, Per Kogner and Jelena
Levitskaya**

**Human neuroblastoma microenvironment supports T-cell
activation in tumor-associated lymphocytes**

Oncoimmunology 2013; 2(3)

<http://dx.doi.org/10.4161/onci.23618>

**[http://www.landesbioscience.com/journals/oncoimmunology/
article/23618/](http://www.landesbioscience.com/journals/oncoimmunology/article/23618/)**



Supplemental figure

T cells infiltrating neuroblastoma proliferate within the tumor mass. Immunohistochemical staining was done as described in Materials and Methods. Neuroblastoma tissues were stained with an antibody specific for the CD3 component of the TCR (green), and an antibody specific to the cell proliferation marker Ki67 (red). A specimen from patient 6 is shown in the figure.