

Figure S6

Cross-reactive antibodies present in the rPvMSP3 antiserum were removed by serial passage through affinity columns

Figure S6

rPvMSP3 proteins used for rabbit serum production and affinity gel coupling

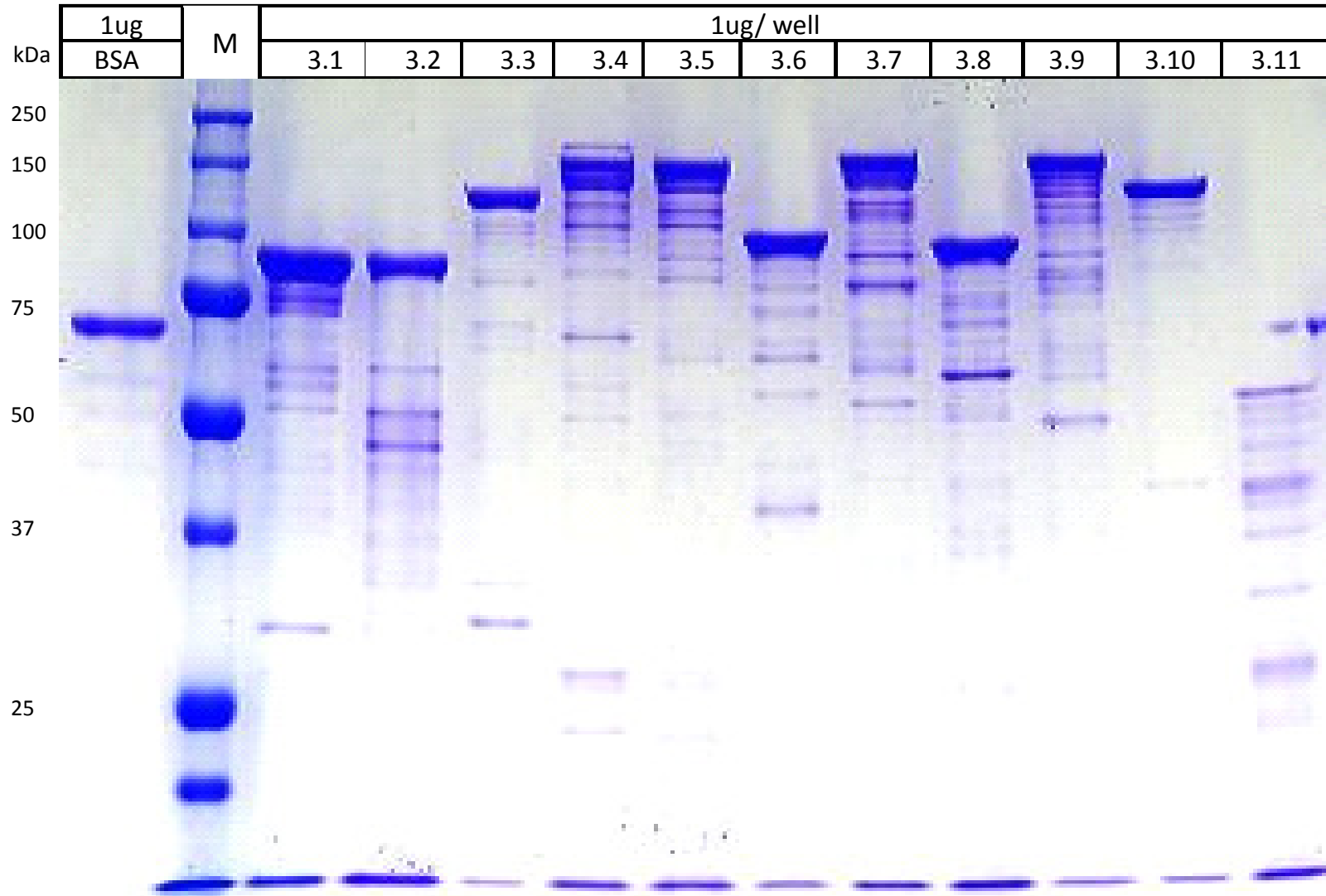


Figure S6

Immunoblot using α -rPvMSP3.1 Ab **before** affinity purification with rPvMSP3.2, rPvMSP3.8 and rPvMSP3.9 protein column

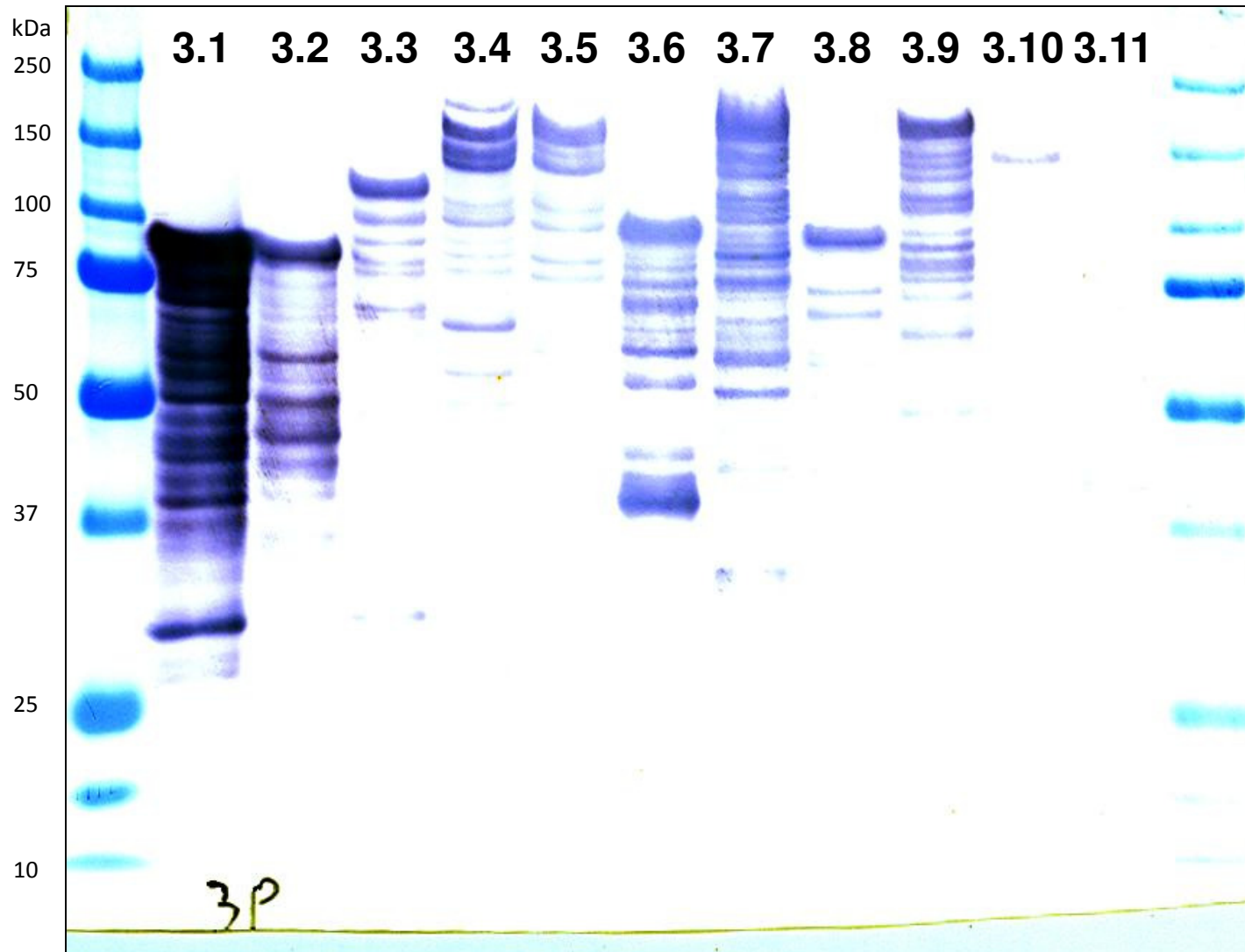


Figure S6

Immunoblot using α -rPvMSP3.1 Ab **after** affinity purification with rPvMSP3.2, rPvMSP3.8 and rPvMSP3.9 protein column



Figure S6

Immunoblot using α -rPvMSP3.2 Ab **before** affinity purification with rPvMSP3.1, rPvMSP3.6 and rPvMSP3.7 protein column

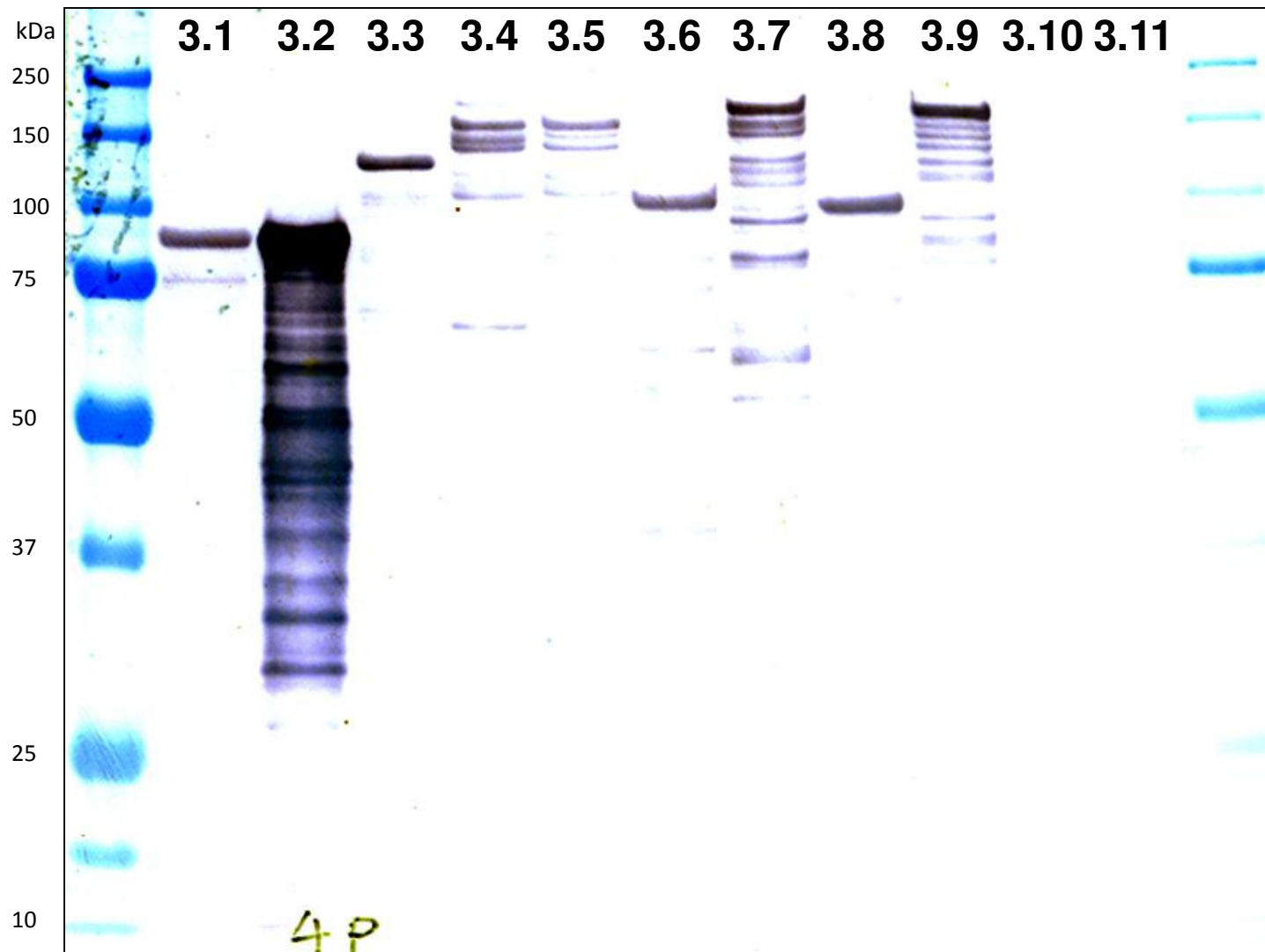


Figure S6

Immunoblot using α -rPvMSP3.2 Ab **after** affinity purification with rPvMSP3.1, rPvMSP3.6 and rPvMSP3.7 protein column

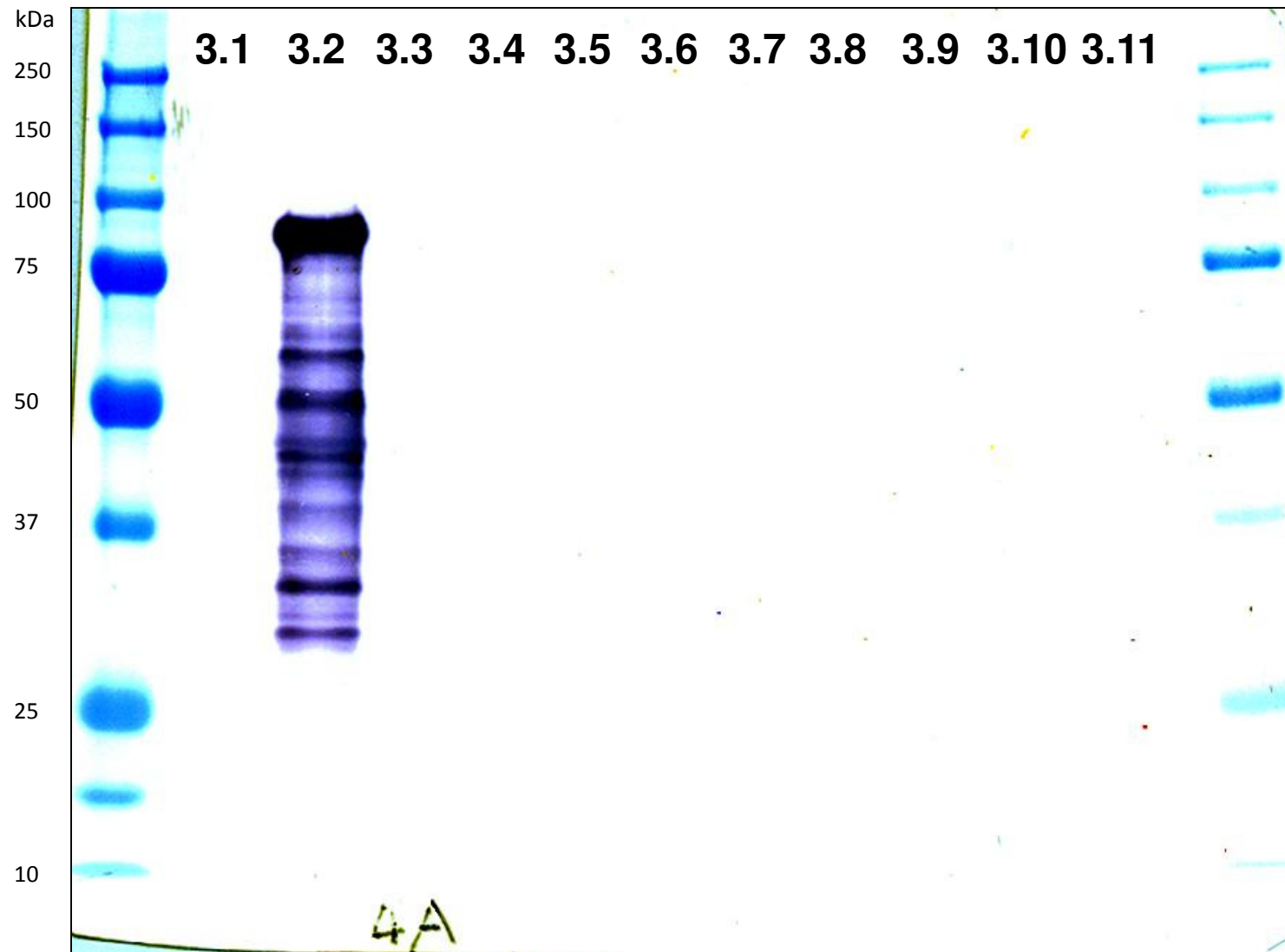


Figure S6

Immunoblot using α -rPvMSP3.3 Ab **before** affinity purification with rPvMSP3.5, rPvMSP3.7 and rPvMSP3.9 protein columns

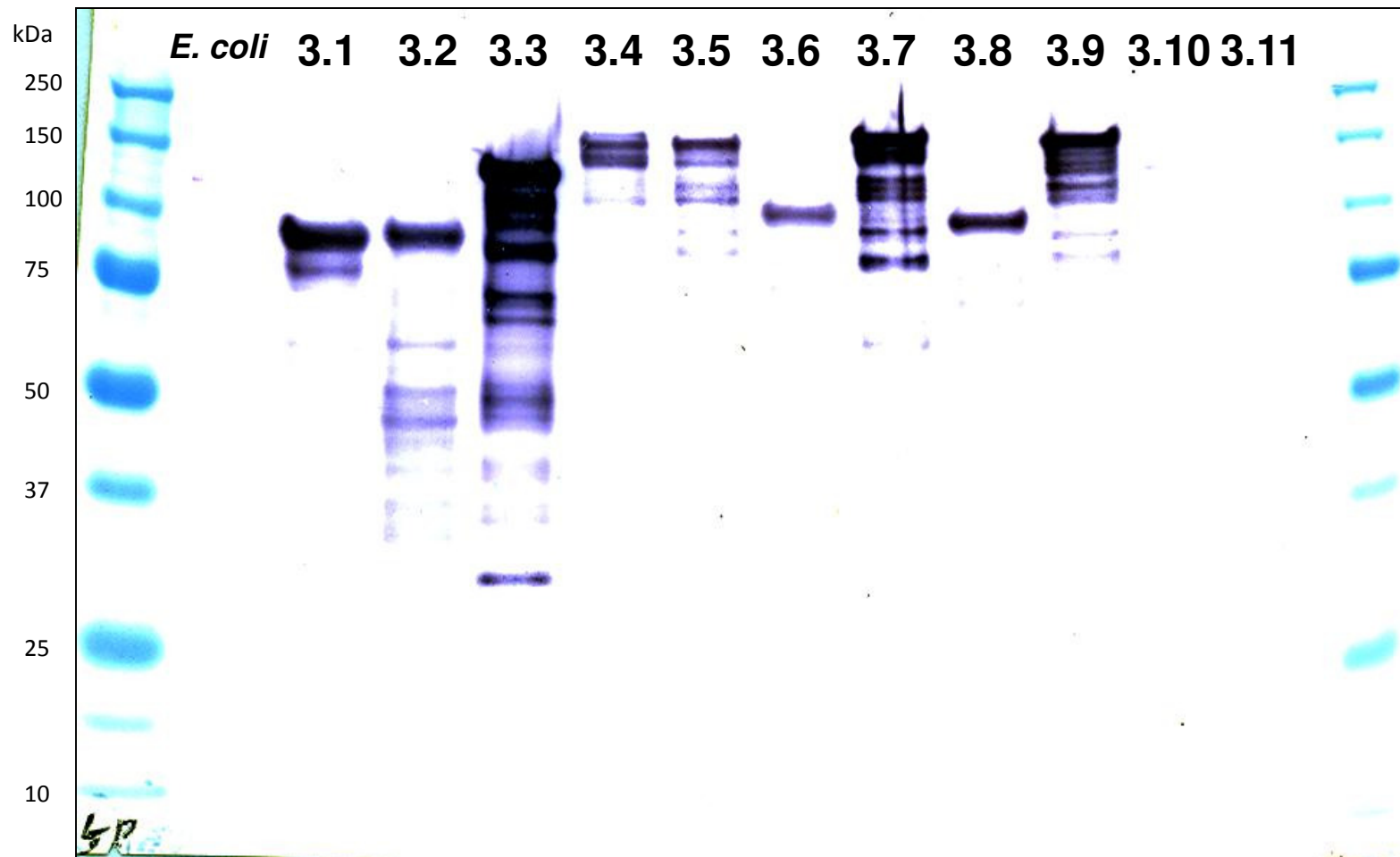


Figure S6

Immunoblot using α -rPvMSP3.3 Ab **after** affinity purification with rPvMSP3.5, rPvMSP3.7 and rPvMSP3.9 protein columns

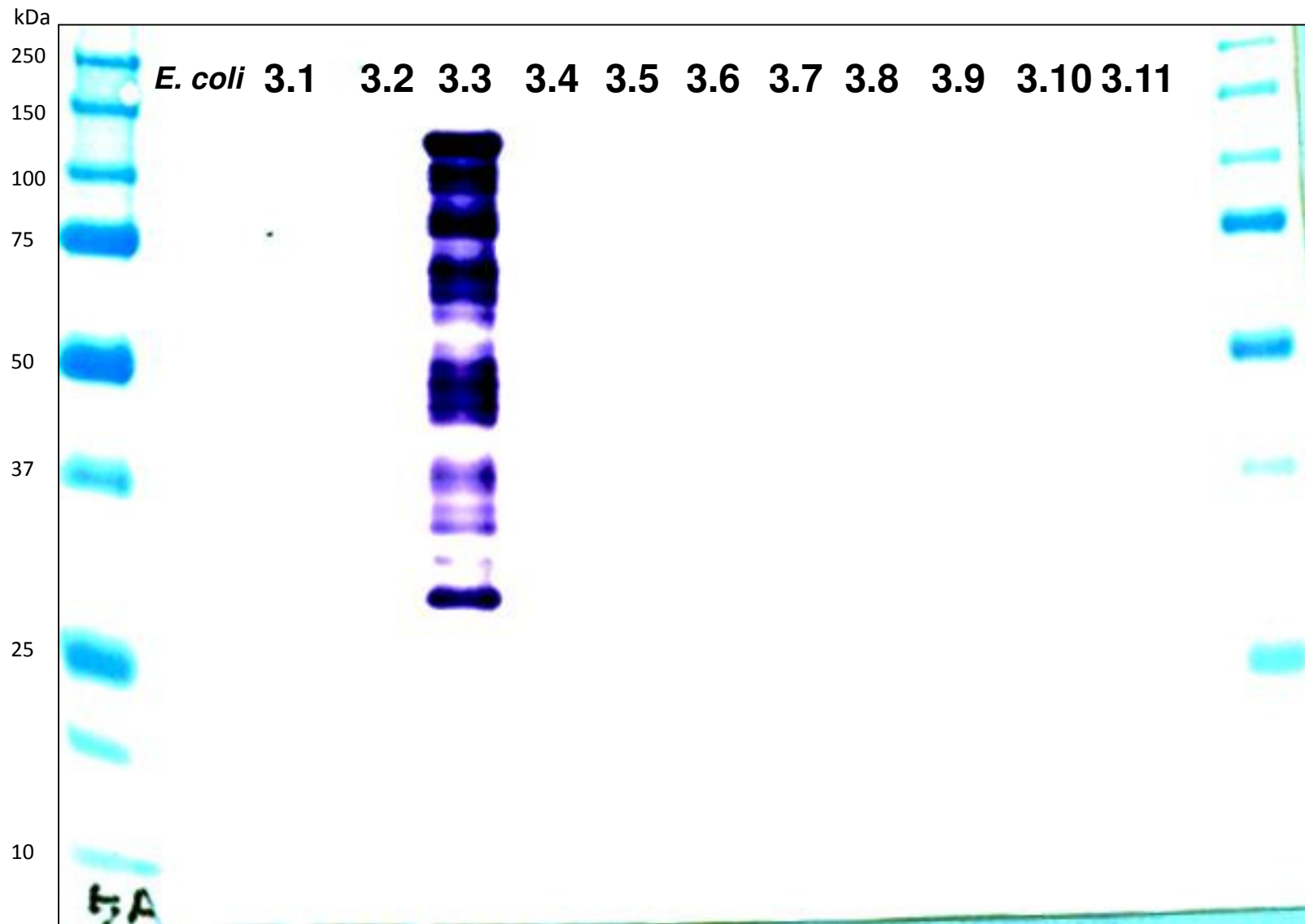


Figure S6

Immunoblot using α -rPvMSP3.4 Ab **before** affinity purification with rPvMSP3.3, rPvMSP3.6 and rPvMSP3.8 antigen columns

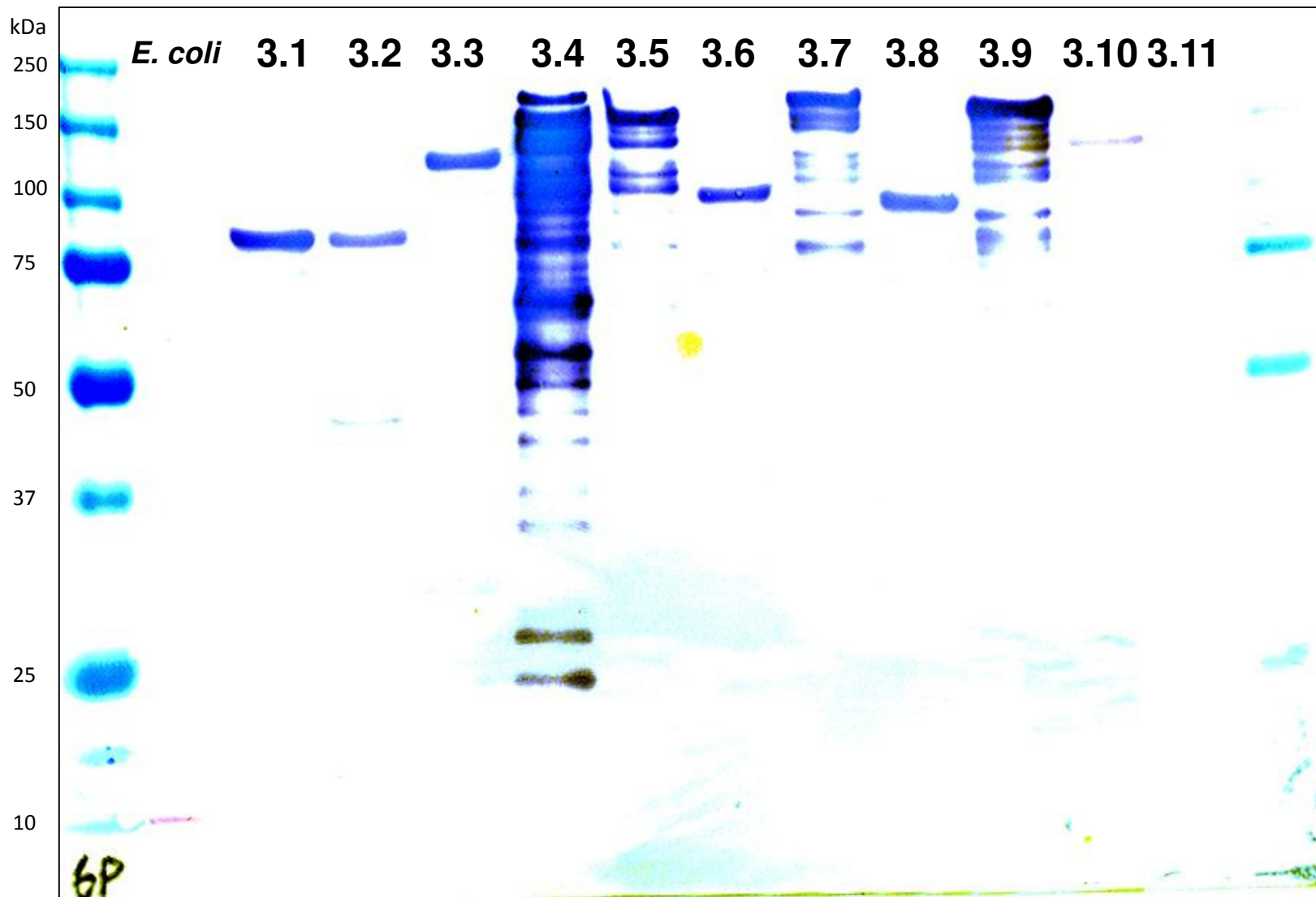


Figure S6

Immunoblot using α -rPvMSP3.4 Ab **after** affinity purification with rPvMSP3.3, rPvMSP3.6 and rPvMSP3.8 antigen columns

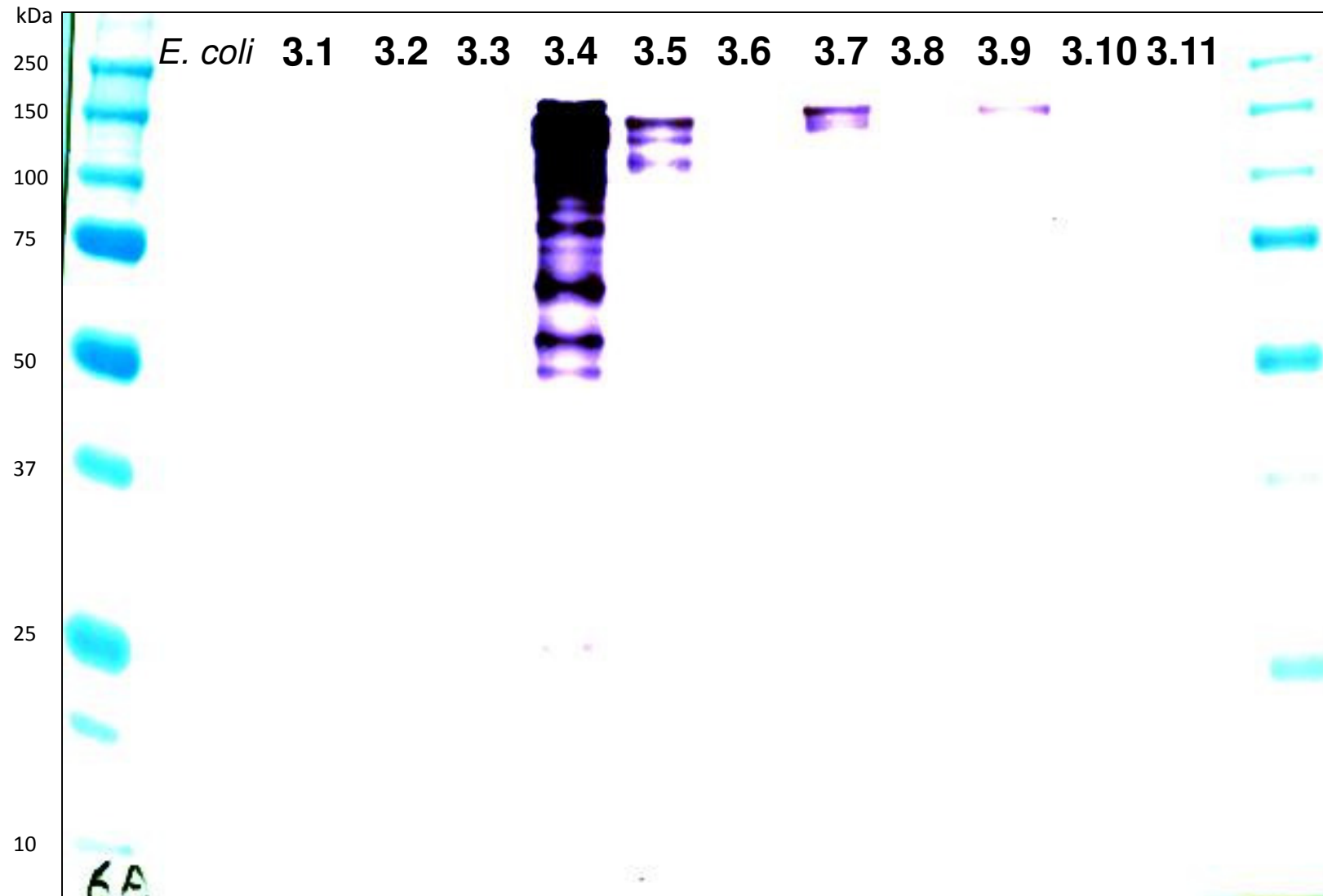


Figure S6

Immunoblot using α -rPvMSP3.4 Ab **after** secondary affinity purification with rPvMSP3.1, rPvMSP3.5, rPvMSP3.7 and rPvMSP3.9 antigen columns

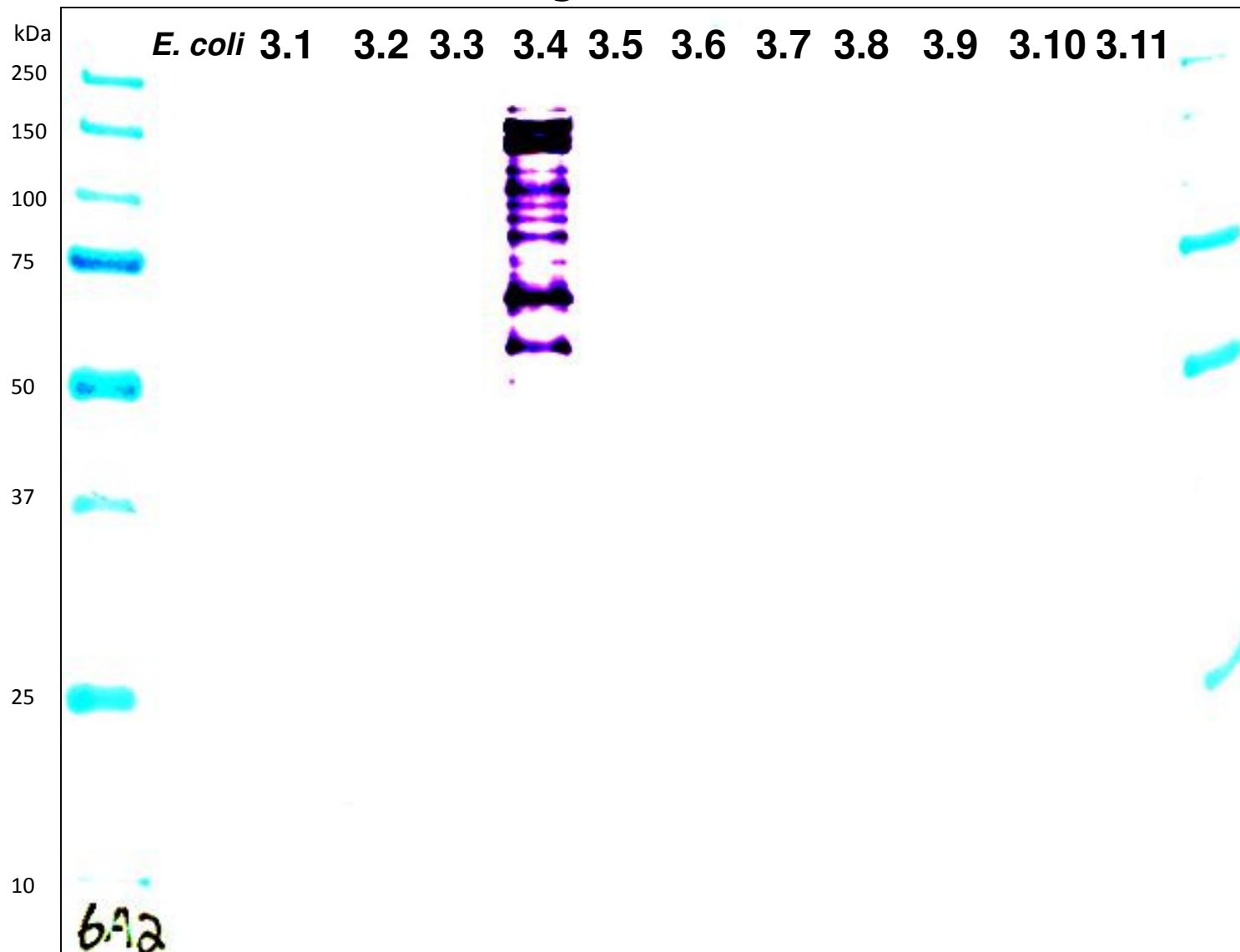


Figure S6

Immunoblot using α -rPvMSP3.5 Ab **before** affinity purification with rPvMSP3.1, rPvMSP3.2 and rPvMSP3.4 antigen columns

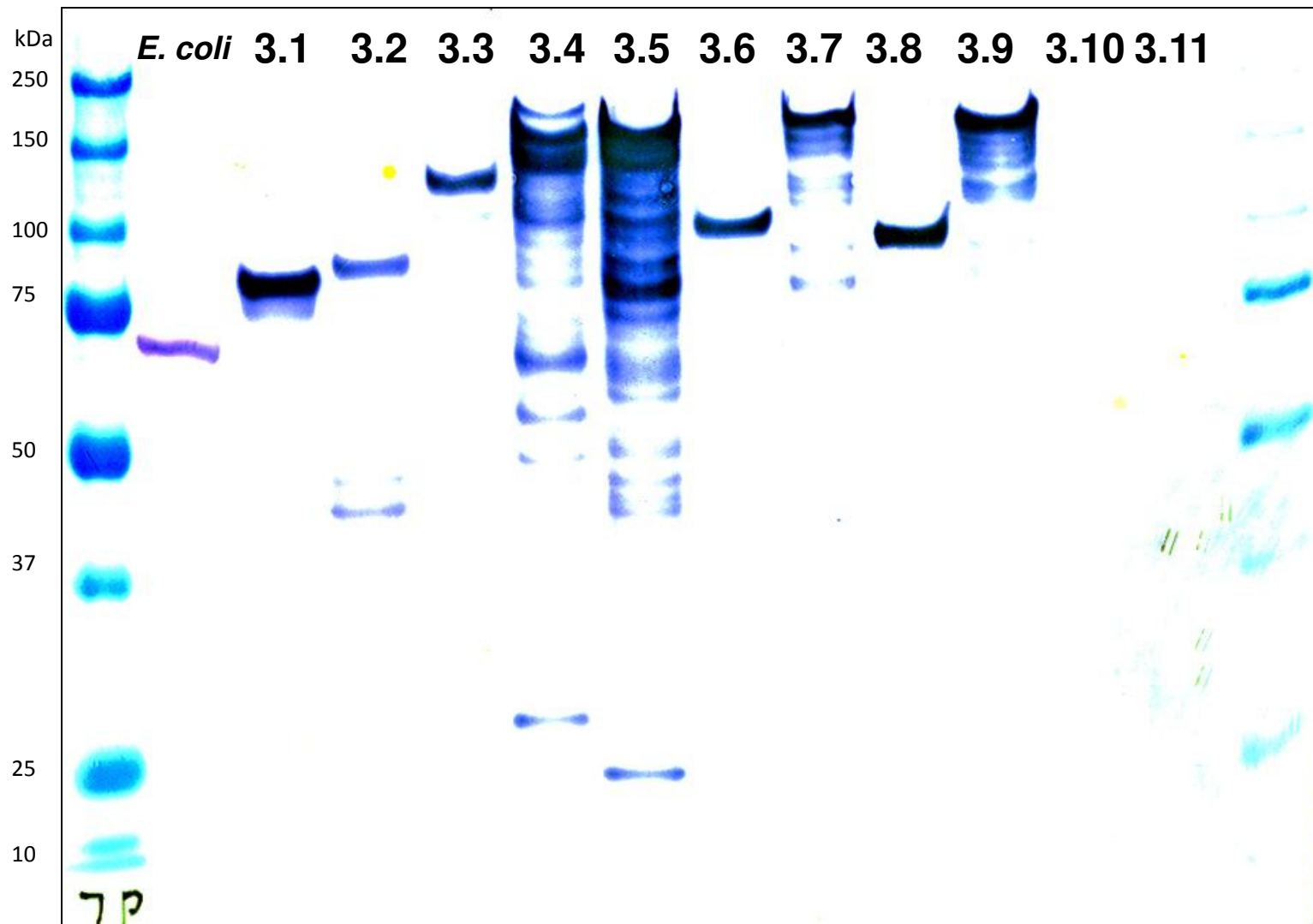


Figure S6

Immunoblot using α -rPvMSP3.5 Ab **after** affinity purification with rPvMSP3.1, rPvMSP3.2 and rPvMSP3.4 antigen columns

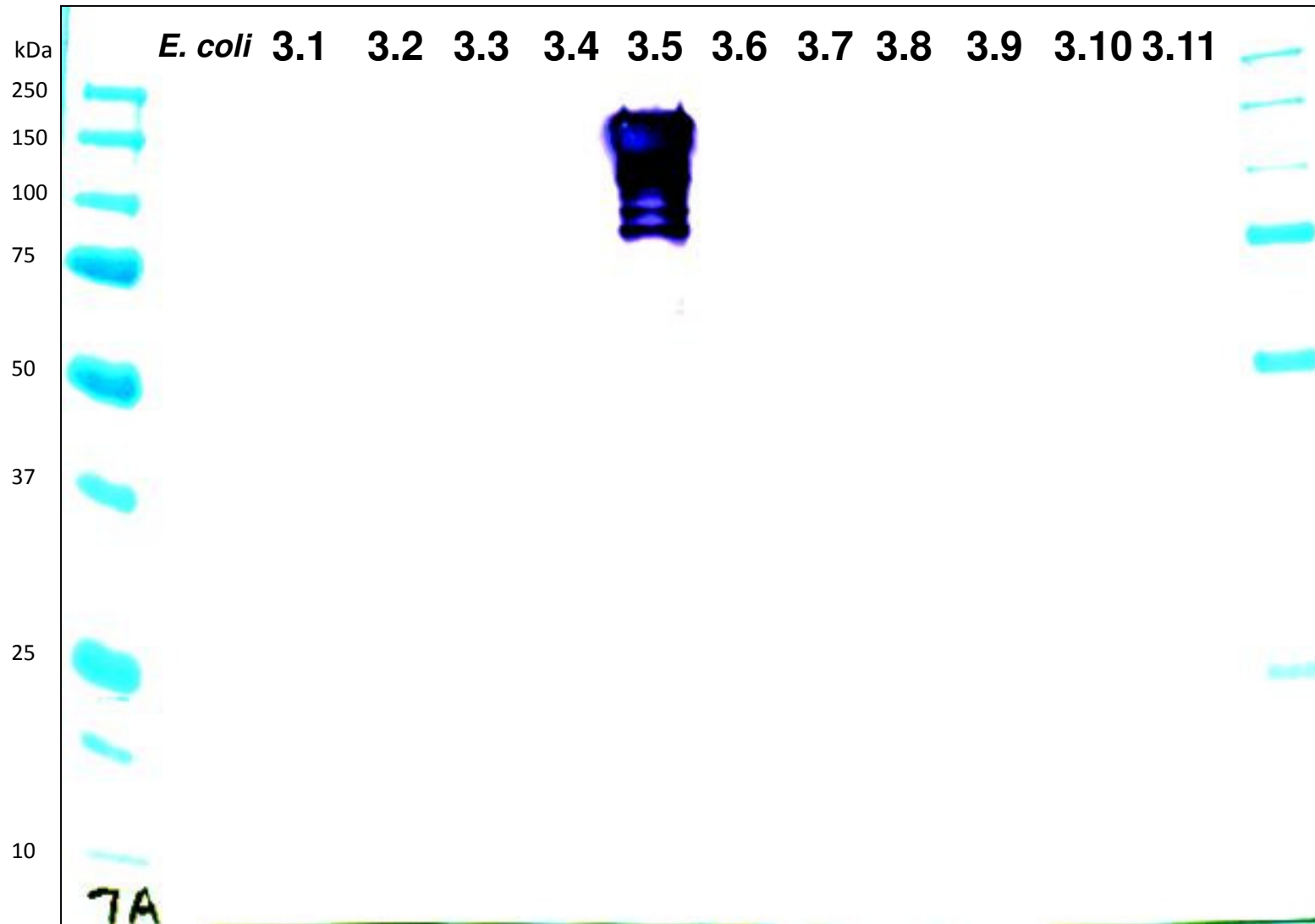


Figure S6

Immunoblot using α -rPvMSP3.6 Ab **before** affinity purification with rPvMSP3.1, rPvMSP3.7 and rPvMSP3.8 columns

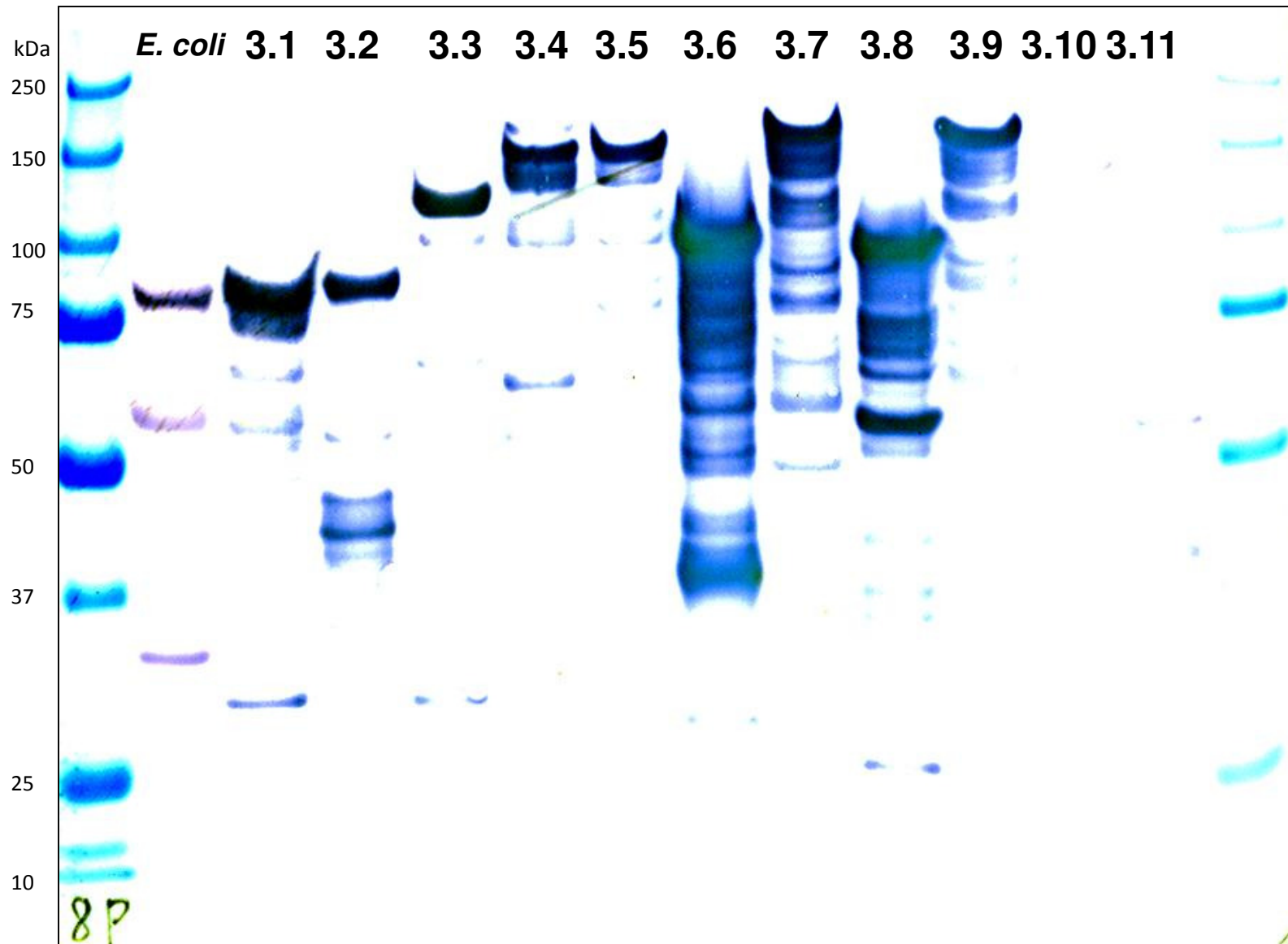


Figure S6

Immunoblot using α -rPvMSP3.6 Ab **after** affinity purification with rPvMSP3.1, rPvMSP3.7 and rPvMSP3.8 columns

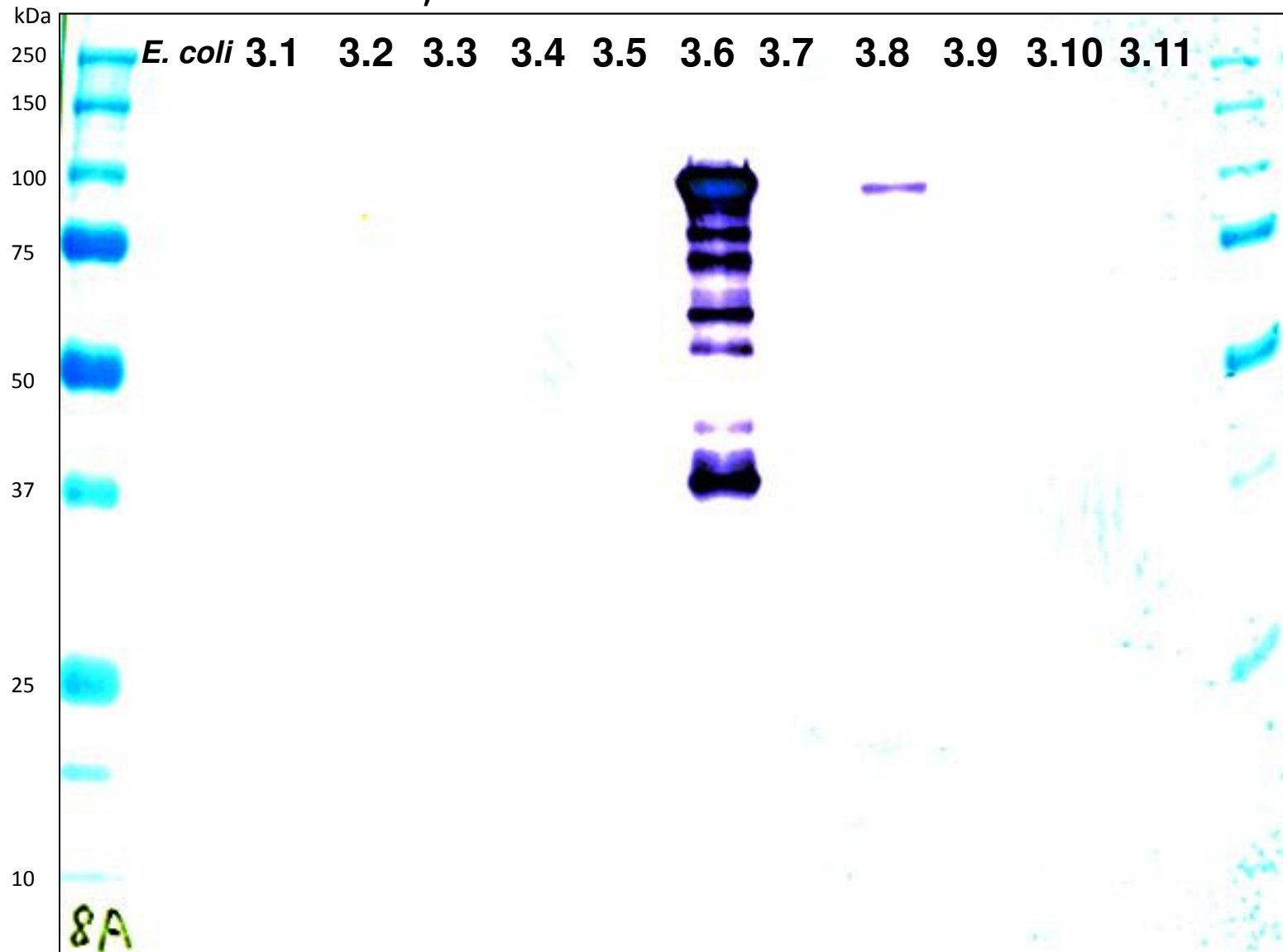


Figure S6

Immunoblot using α -rPvMSP3.7 Ab **before** affinity purification with rPvMSP3.4, rPvMSP3.5 and rPvMSP3.9 columns

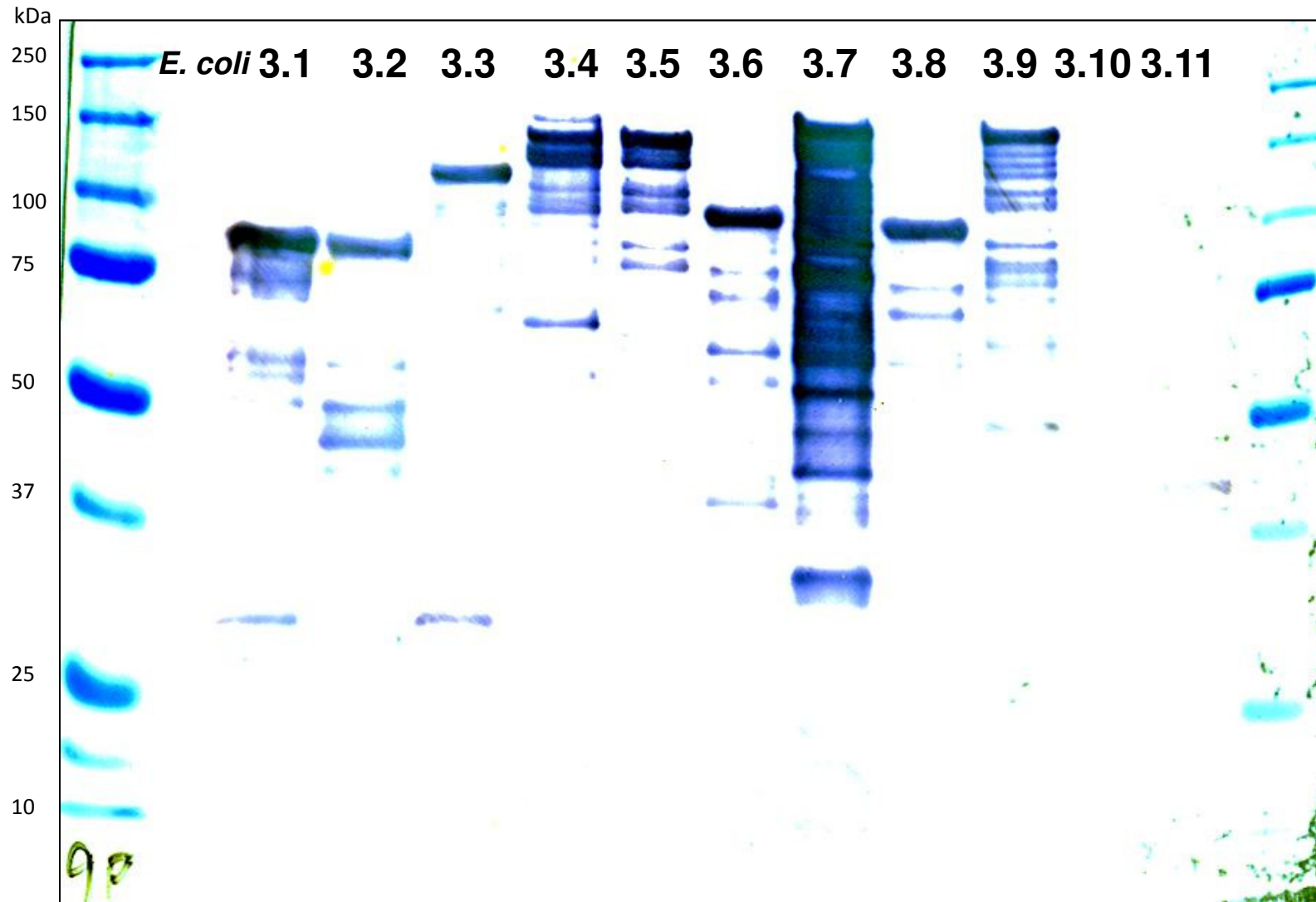


Figure S6

Immunoblot using α -rPvMSP3.7 Ab **after** affinity purification with rPvMSP3.4, rPvMSP3.5 and rPvMSP3.9 columns

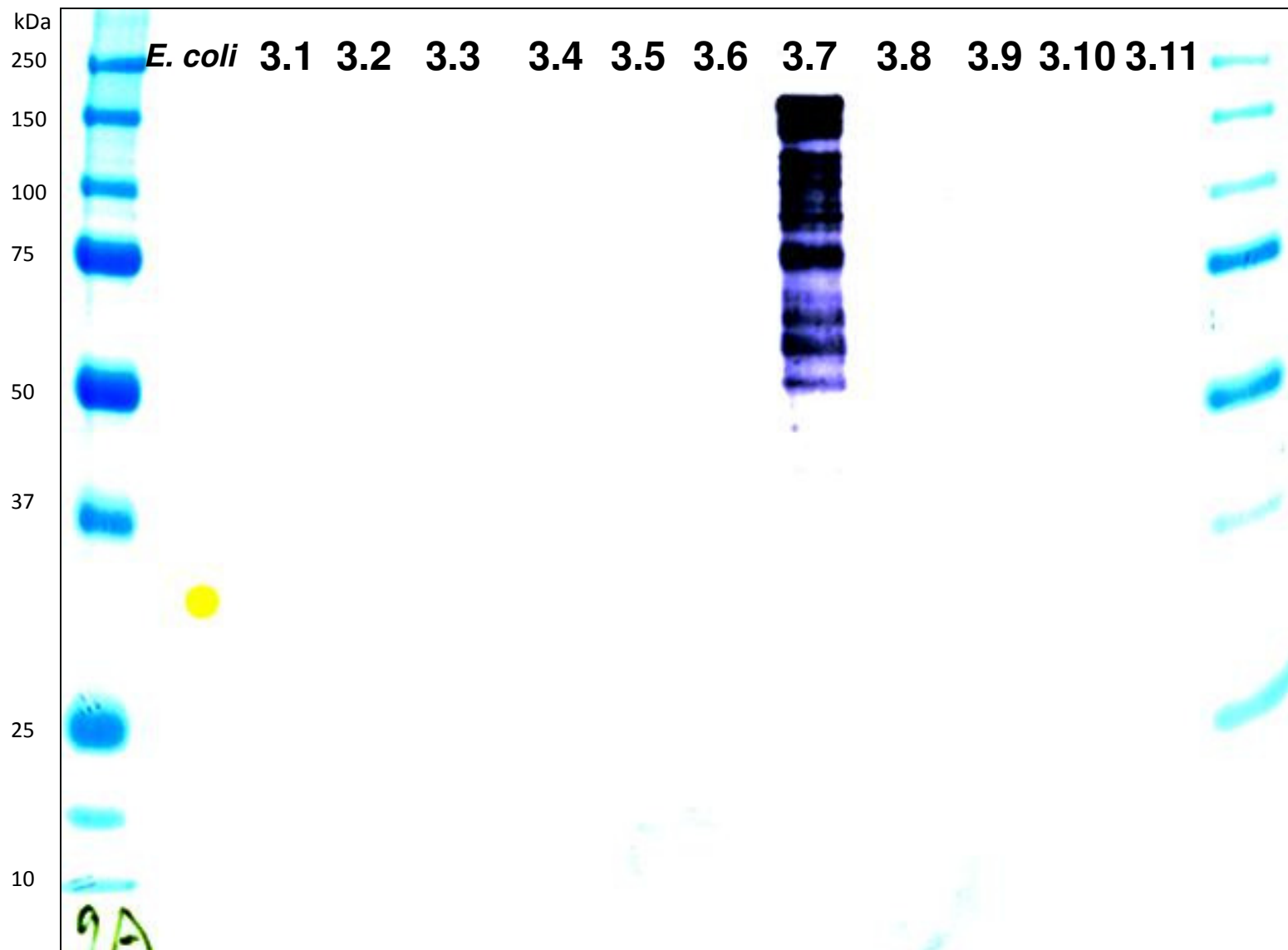


Figure S6

Immunoblot using α -rPvMSP3.8 Ab **before** affinity purification with rPvMSP3.2, rPvMSP3.3 and rPvMSP3.6 columns

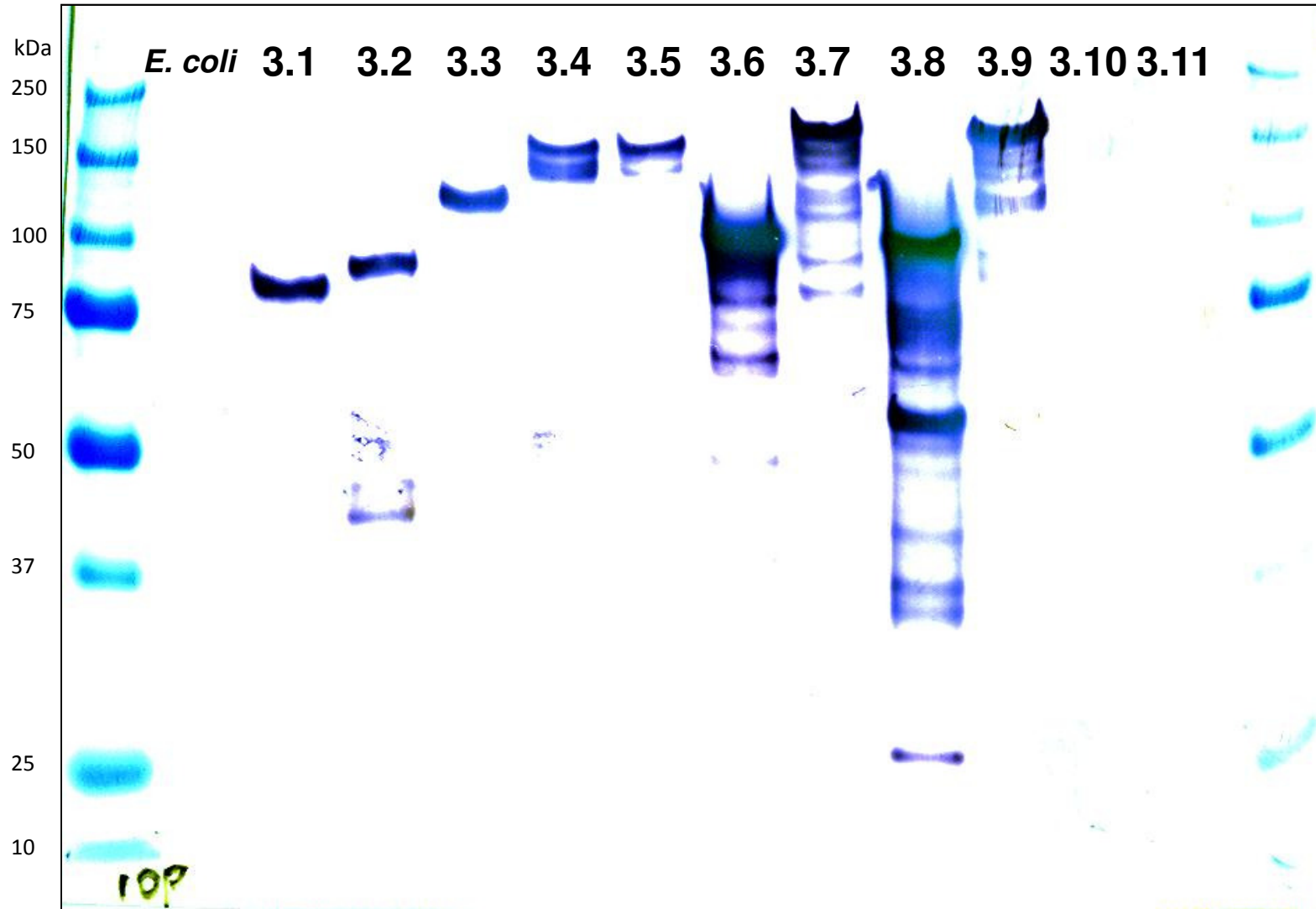


Figure S6

Immunoblot using α -rPvMSP3.8 Ab **after** affinity purification with rPvMSP3.2, rPvMSP3.3 and rPvMSP3.6 columns

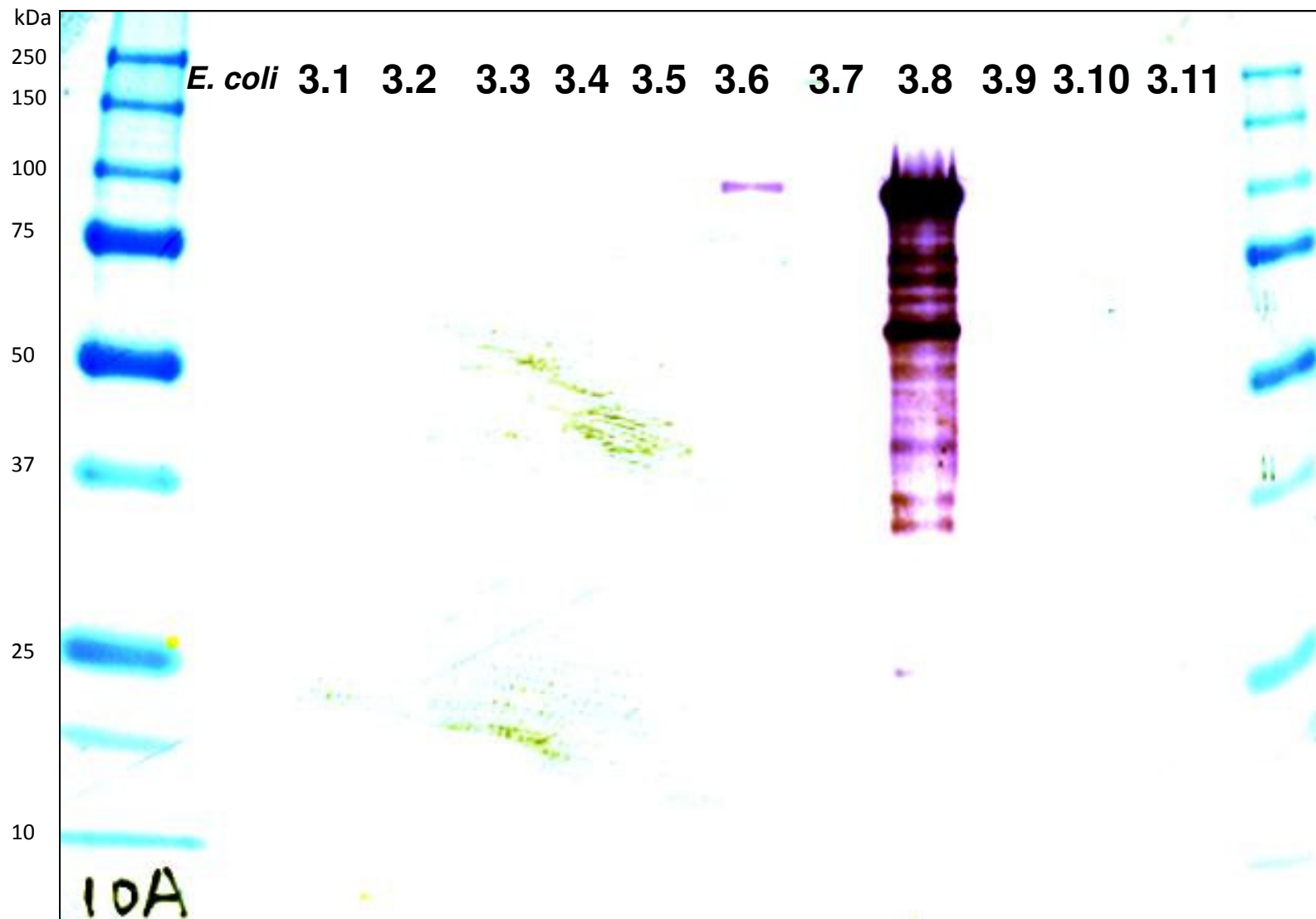


Figure S6

Immunoblot using α -rPvMSP3.8 Ab **after** secondary affinity purification with rPvMSP3.6 antigen columns

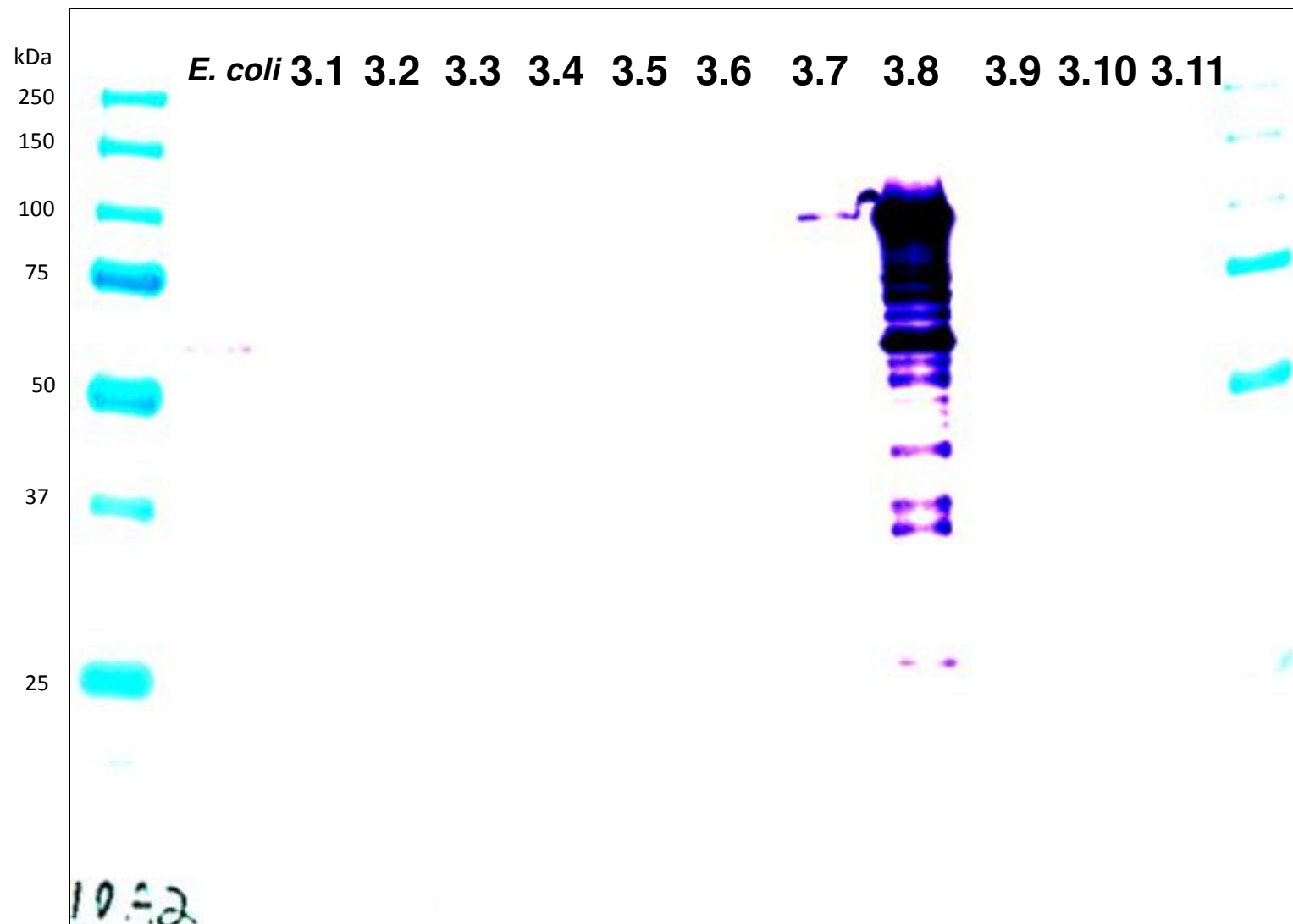


Figure S6

Immunoblot using α -rPvMSP3.9 Ab **before** affinity purification with rPvMSP3.4, rPvMSP3.5 and rPvMSP3.7 columns

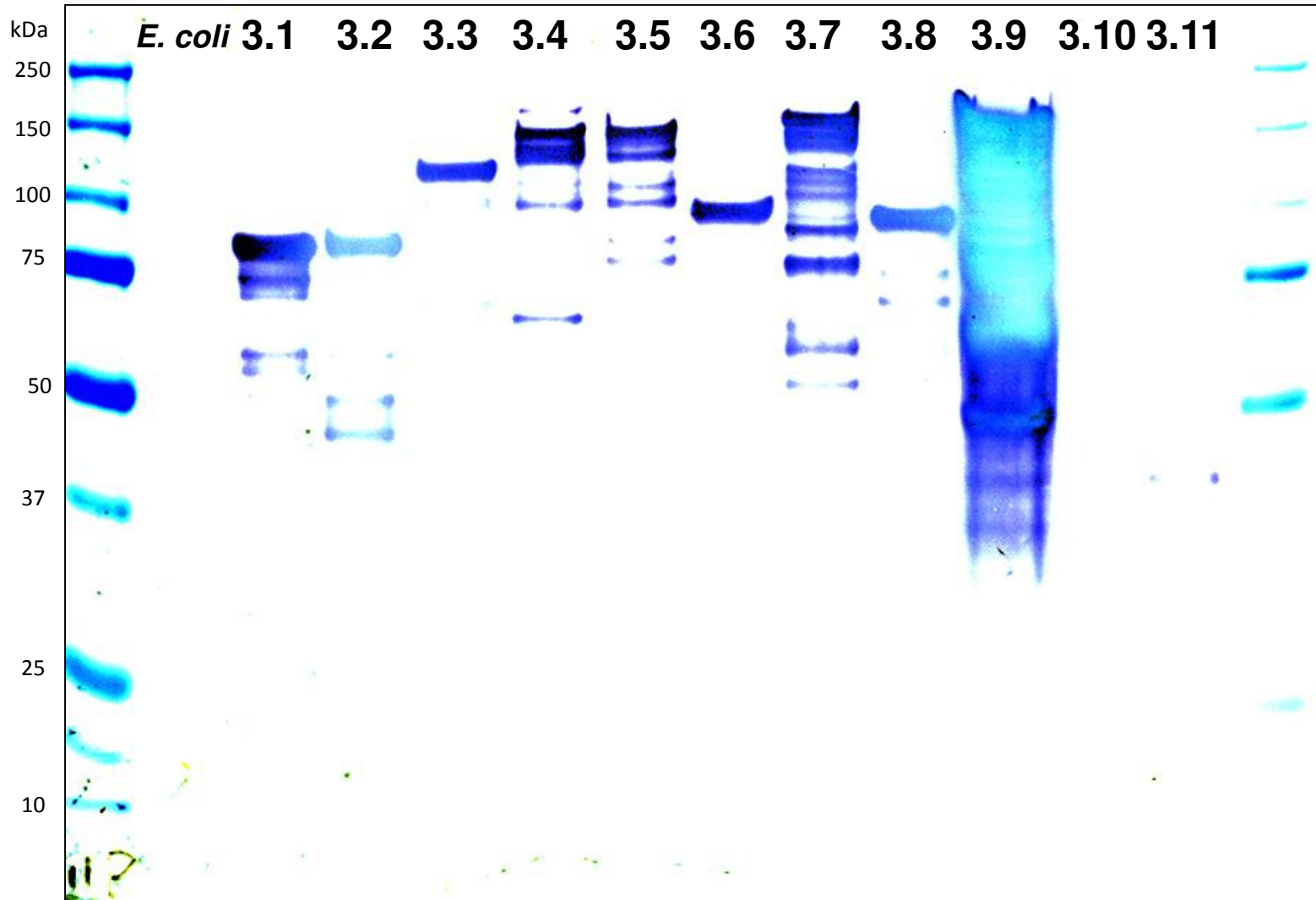


Figure S6

Immunoblot using α -rPvMSP3.9 Ab **after** affinity purification with rPvMSP3.4, rPvMSP3.5 and rPvMSP3.7 columns

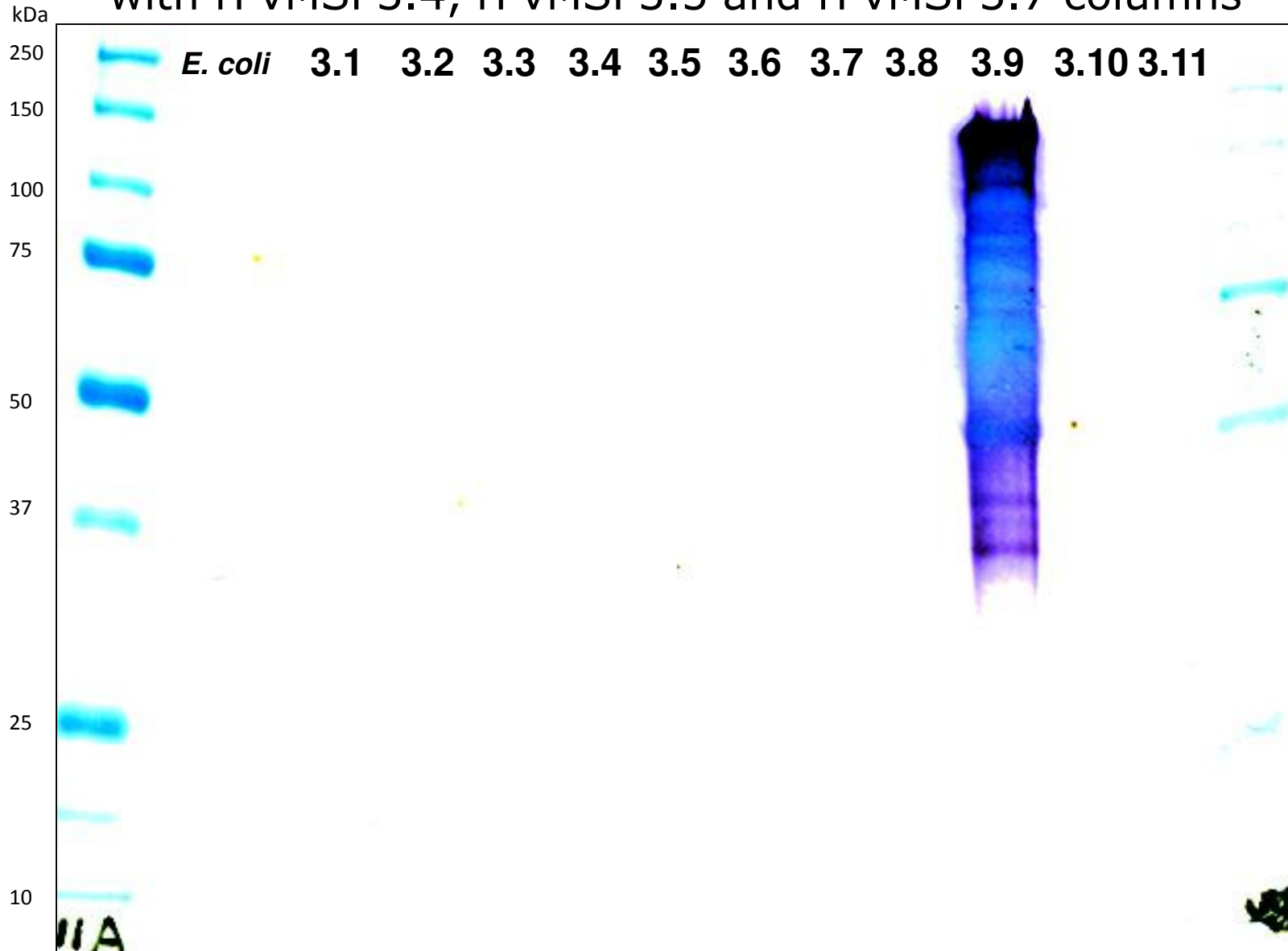


Figure S6

Immunoblot using α -rPvMSP3.10 Ab **before** affinity purification with rPvMSP3.1, rPvMSP3.8 and rPvMSP3.9 columns

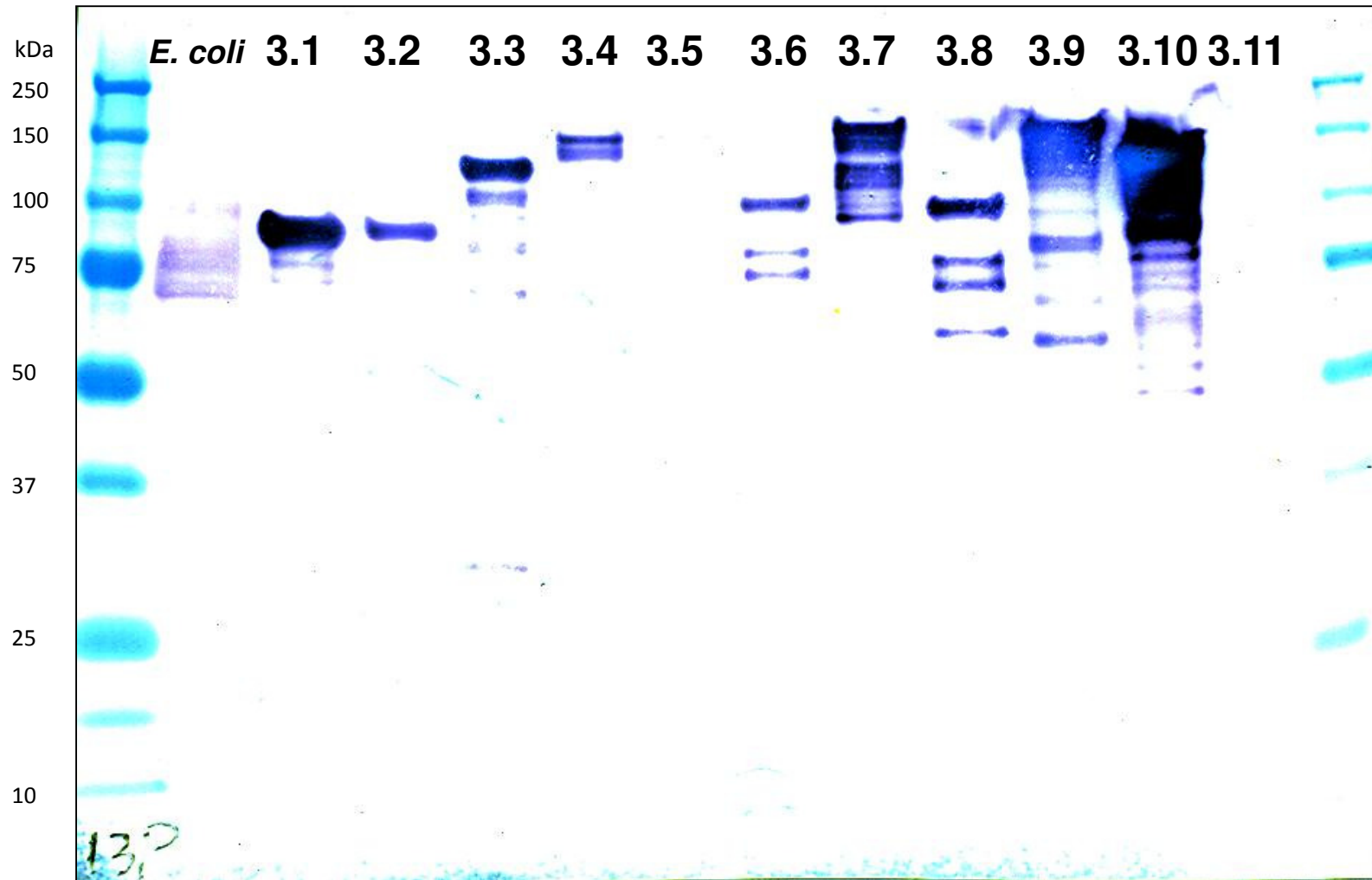


Figure S6

Immunoblot using α -rPvMSP3.10 Ab **after** affinity purification with rPvMSP3.1, rPvMSP3.8 and rPvMSP3.9 columns

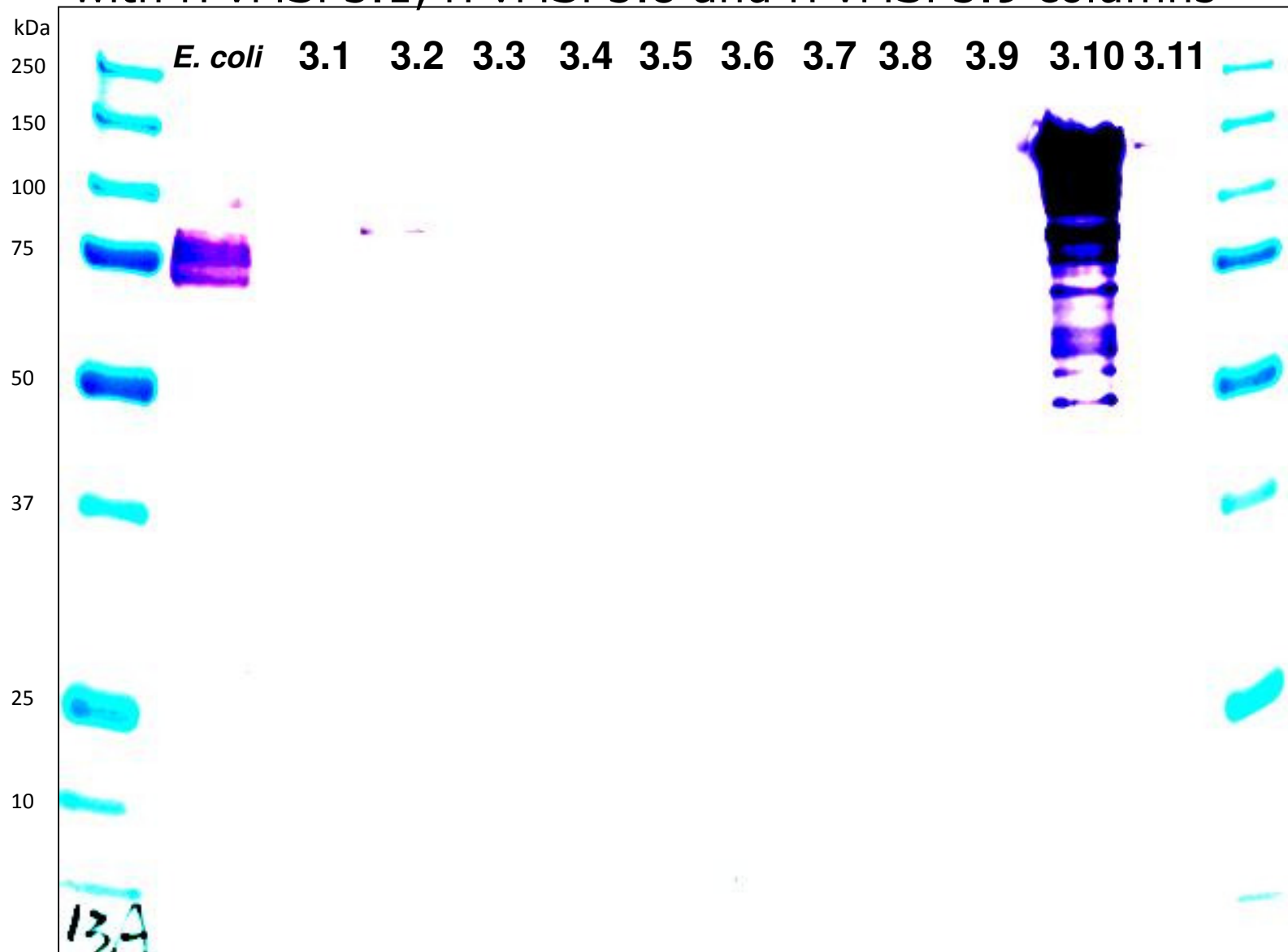


Figure S6

Immunoblot using α -rPvMSP3.10 Ab **after** secondary affinity purification with rPvMSP3.2, rPvMSP3.3 and rPvMSP3.4 antigen columns

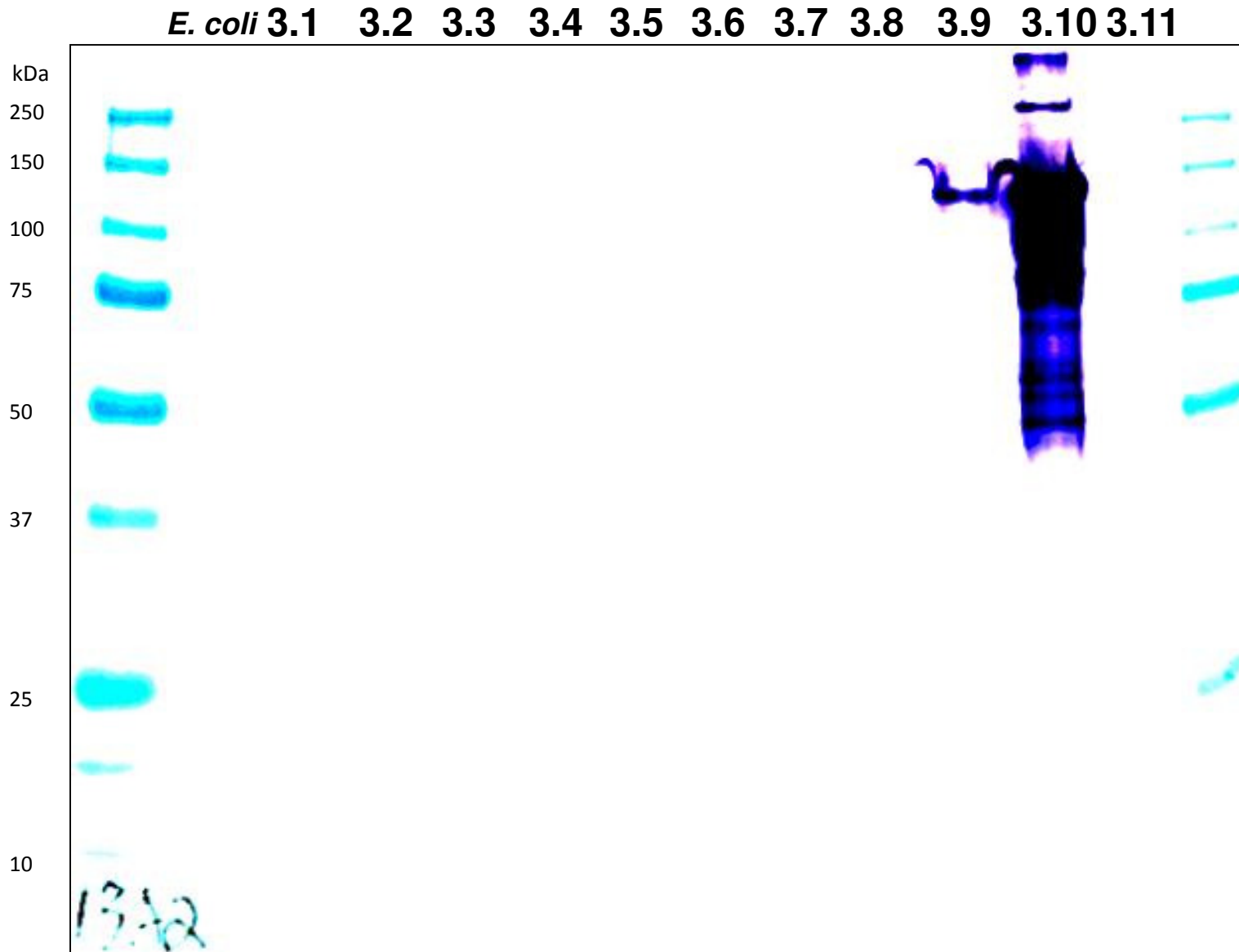


Figure S6

Immunoblot using α -rPvMSP3.11 Ab **before** affinity purification with rPvMSP3.2, rPvMSP3.3 and rPvMSP3.6 columns

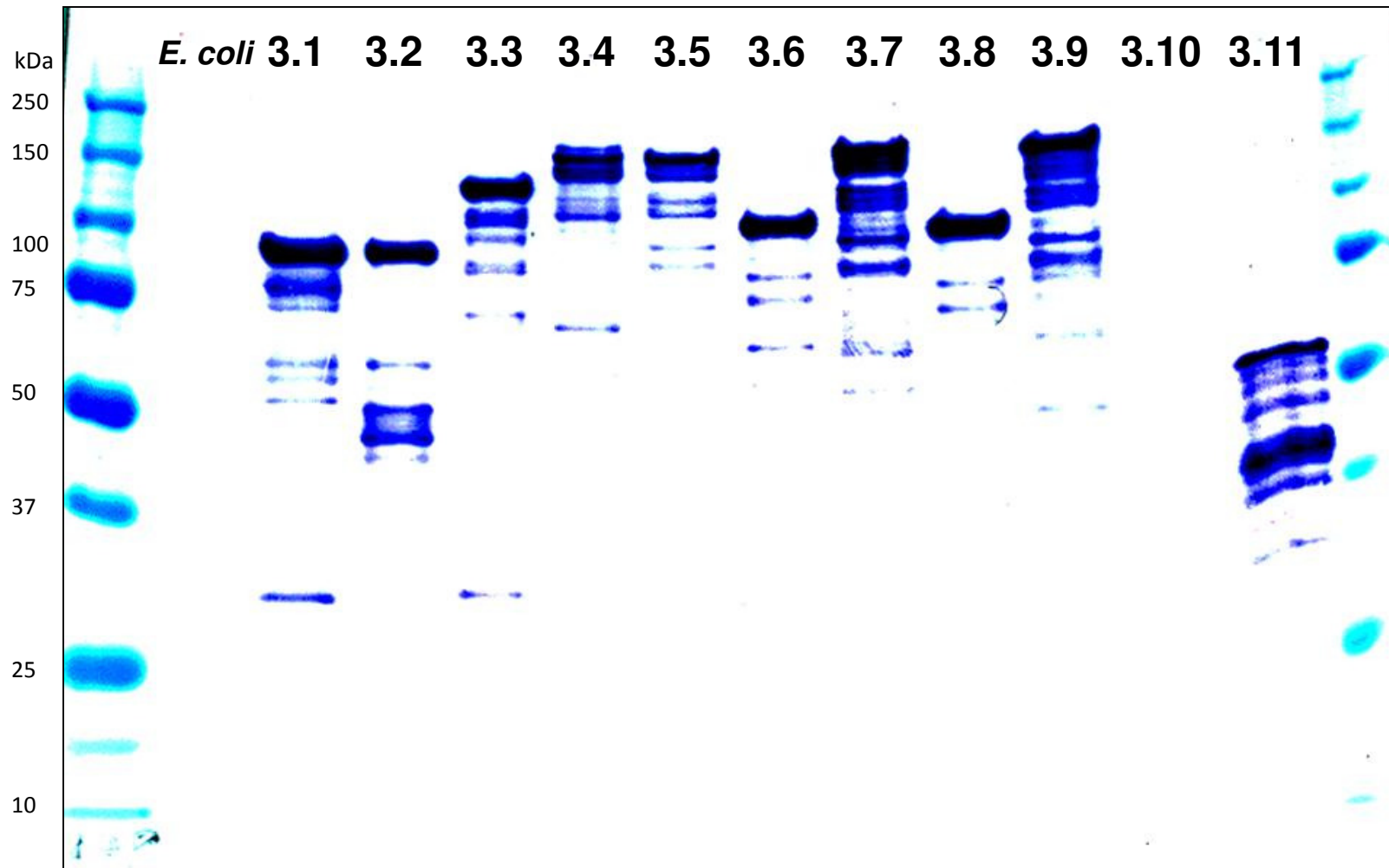


Figure S6

Immunoblot using α -rPvMSP3.11 Ab **after** affinity purification with rPvMSP3.2, rPvMSP3.3 and rPvMSP3.8 columns

