

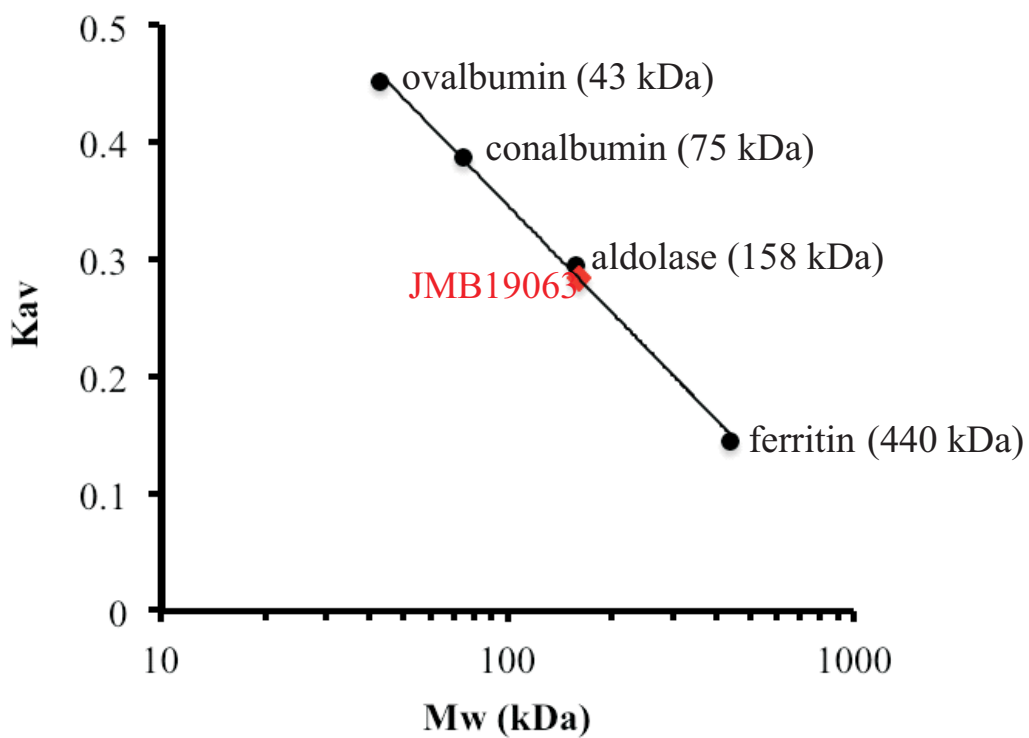
## Supplemental Information

### From soil to structure: a novel dimeric $\beta$ -glucosidase belonging to glycoside hydrolase family 3 isolated from compost using metagenomic analysis

Ryan P. McAndrew<sup>1,2,§</sup>, Joshua I. Park<sup>1,§</sup>, Wolfgang Reindl<sup>1,2,3</sup>, Gregory D. Friedland<sup>1,4</sup>, Richard A. Heins<sup>1,4</sup>, Patrik D'haeseleer<sup>1,3</sup>, Trent Northen<sup>1,3</sup>, Kenneth L. Sale<sup>1,4</sup>, Blake A. Simmons<sup>1,5</sup>, and Paul D. Adams<sup>1,2,6</sup>

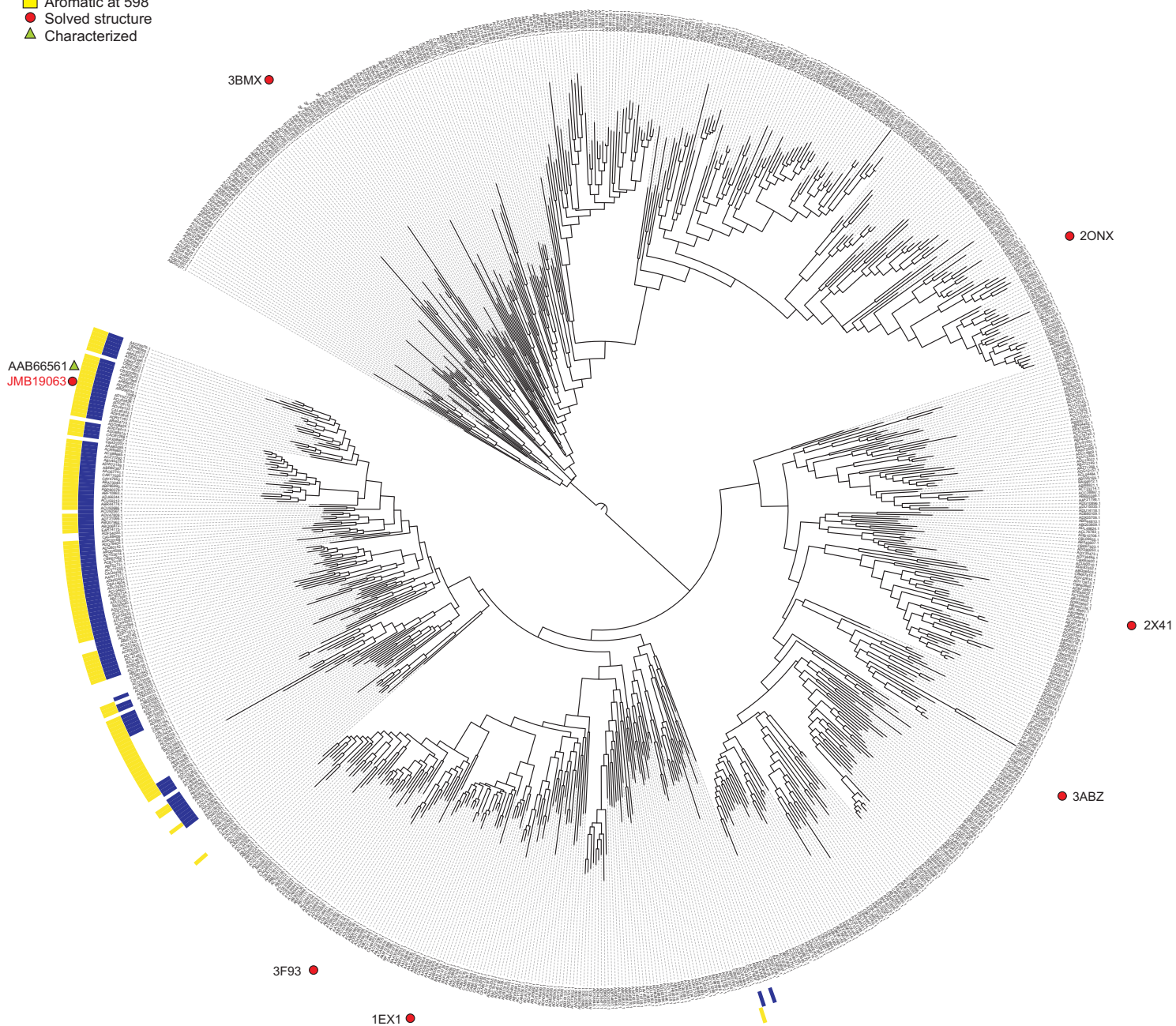
#### Table of Contents

<b>Fig. SI1.</b> Determination of the apparent molecular weight of JMB19063	S2
<b>Fig. SI2.</b> Phylogenetic tree	S3



**Figure S11.** Determination of the apparent molecular weight of JMB19063 on Superdex 200 10/300GL. The black circles represent the protein standards used for calibration of the gel filtration column (Gel Filtration HWT Calibration Kit, GE HealthCare), and the red diamond represent JMB19063. Based on the calibration curve, the interpolated Mw of JMB19063 is 161 kDa

- Arginine at 587
- Aromatic at 598
- Solved structure
- ▲ Characterized



**Figure SI2.** A phylogenetic tree built from an alignment of GH3 family members to representative structures using FastTree 2.1.3.