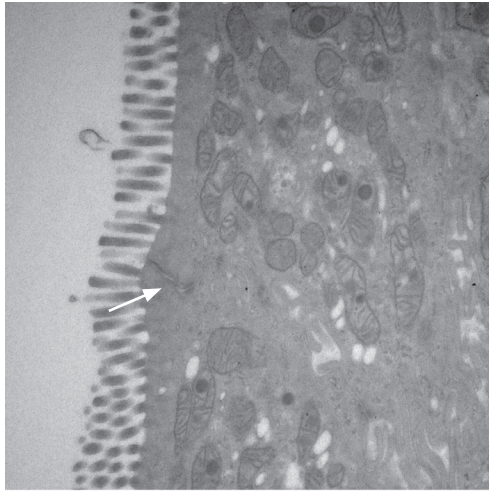


Supplementary Figure 4

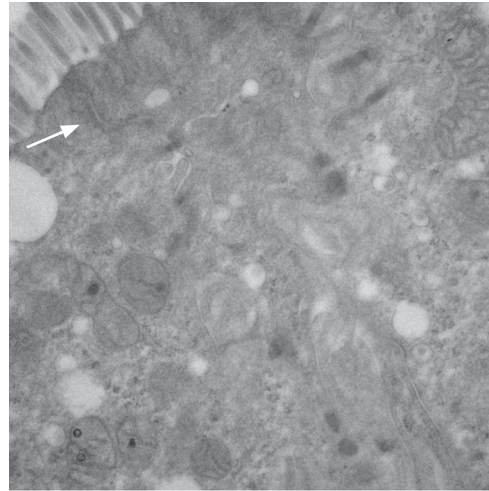
WT



MIG16 TEM.003.tif
WT apical TJ complex
Complex #3
Print Mag: 40200x @ 7.0 in

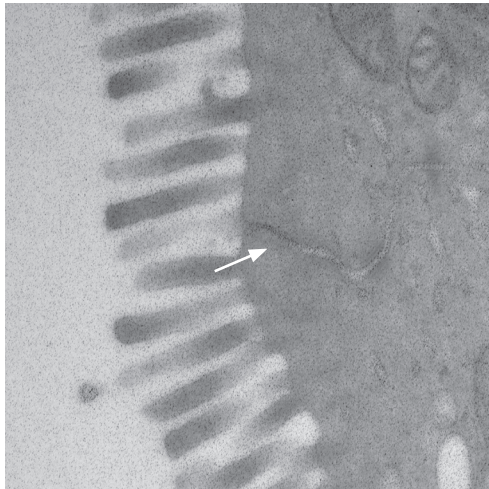
500 nm
HV=80.0kV
Direct Mag: 25000x

Mtg16^{-/-}



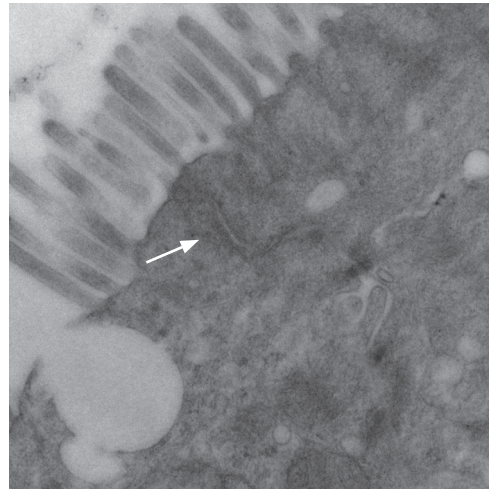
MIG16 TEM.014.tif
N apical TJ complex grid 1
complex #3 at 25k
Print Mag: 40200x @ 7.0 in

500 nm
HV=80.0kV
Direct Mag: 25000x



MIG16 TEM.004.tif
WT apical TJ complex
Complex #4
Print Mag: 105000x @ 7.0 in

100 nm
HV=80.0kV
Direct Mag: 66000x



MIG16 TEM.015.tif
N apical TJ complex grid 1
complex #3 at 40k
Print Mag: 64300x @ 7.0 in

500 nm
HV=80.0kV
Direct Mag: 40000x