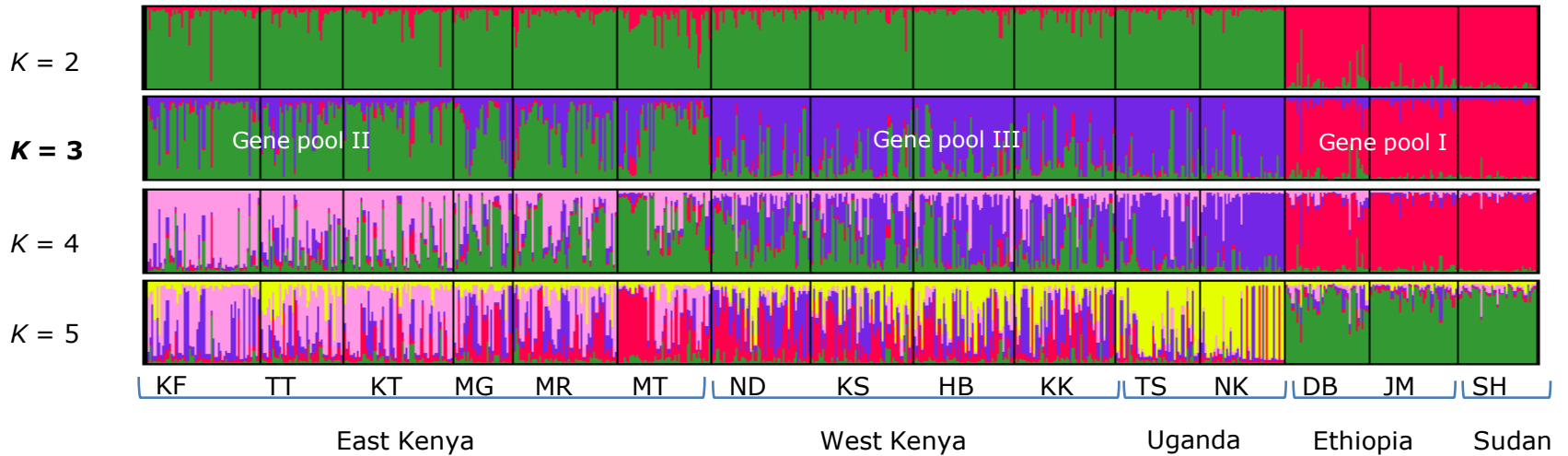
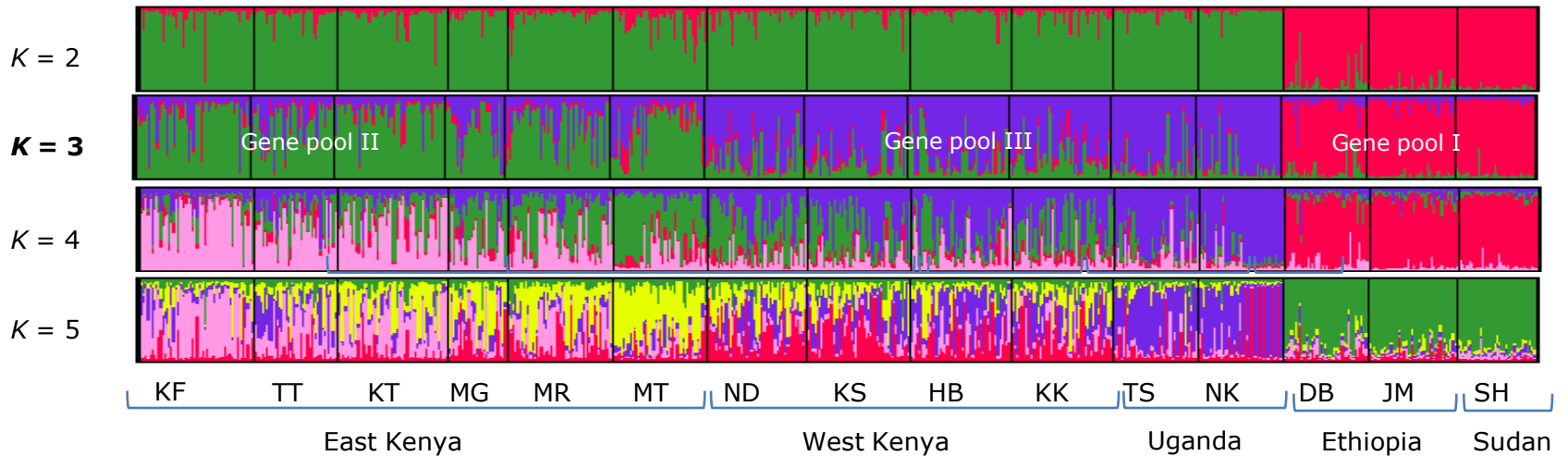


## Supplementary Figure S1

Model 1: Populations are admixed and their allele frequencies are correlated

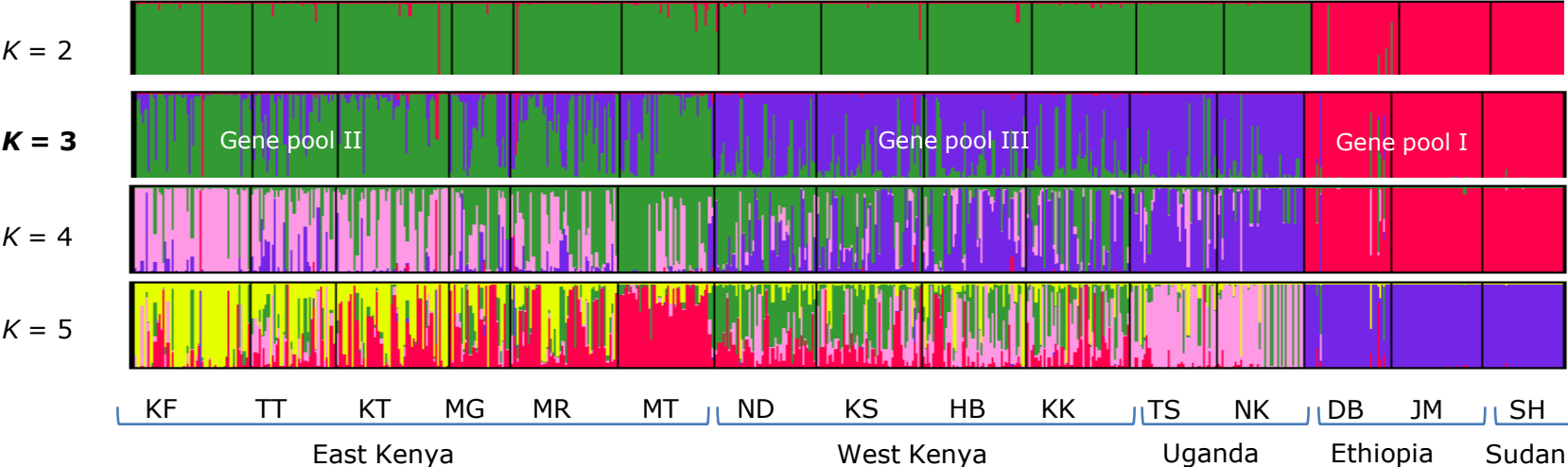


Model 2: Populations are admixed but their allele frequencies are independent

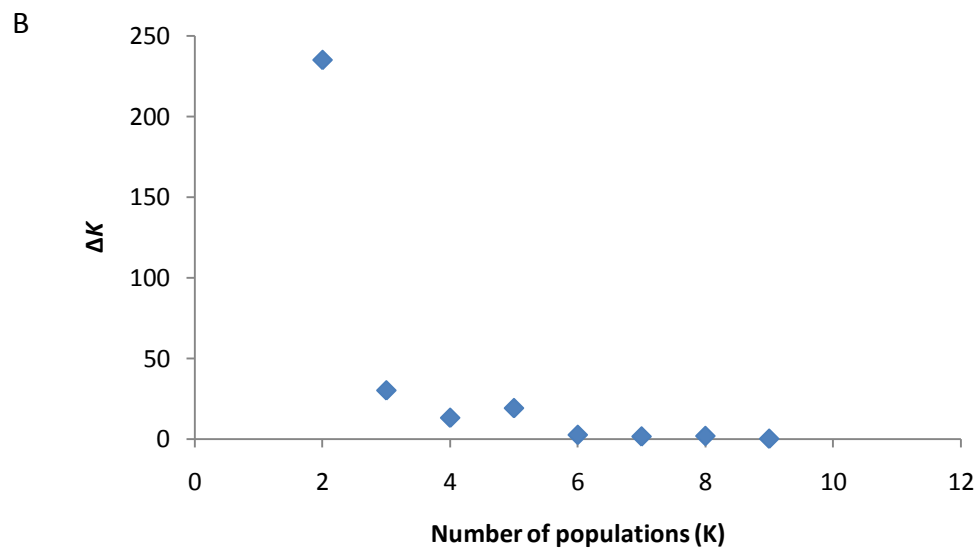
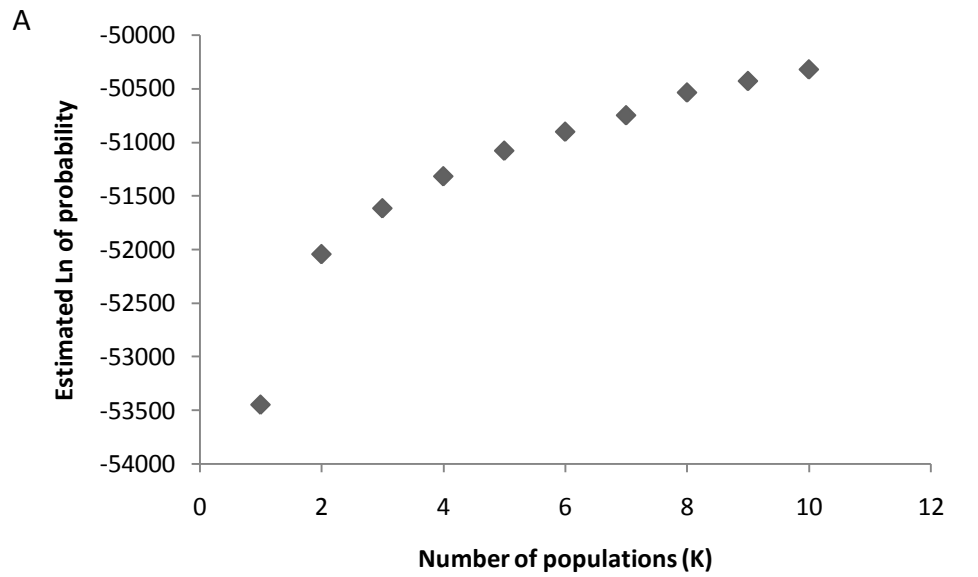


# Supplementary Figure S1 continued

Model 4: No admixture between populations and their allele frequencies are correlated

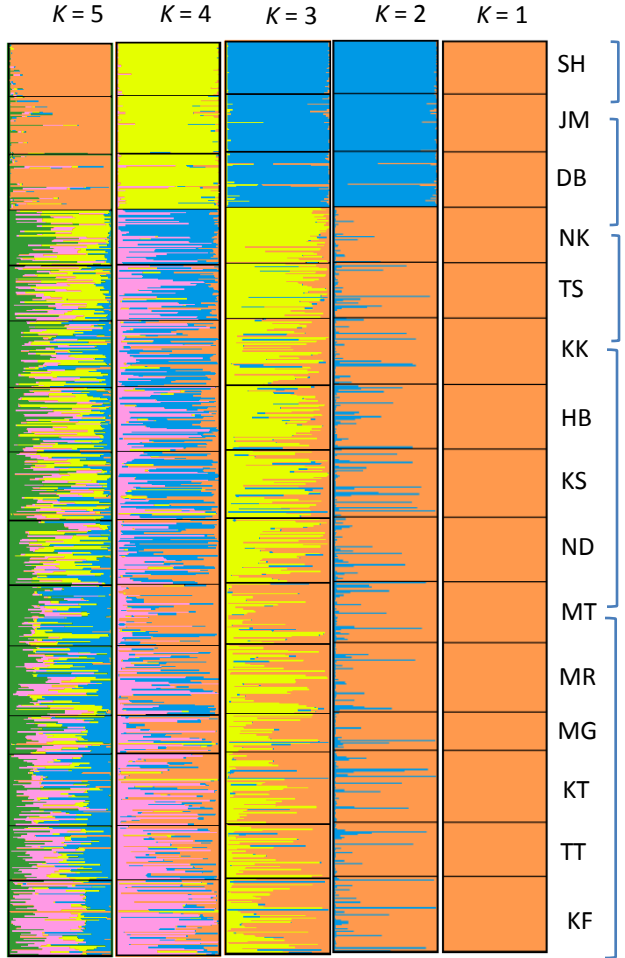


## Supplementary Figure S2

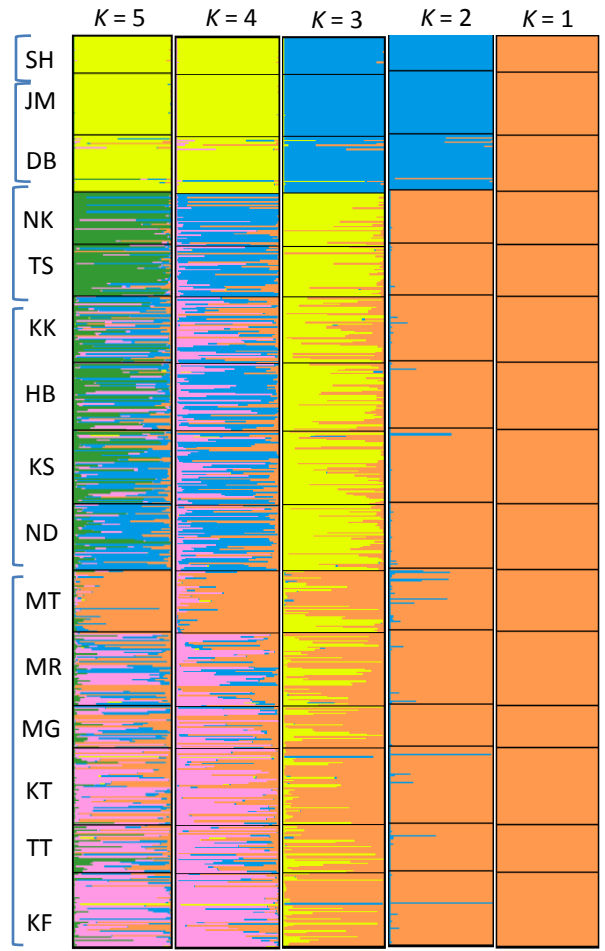


# Supplementary Figure S3

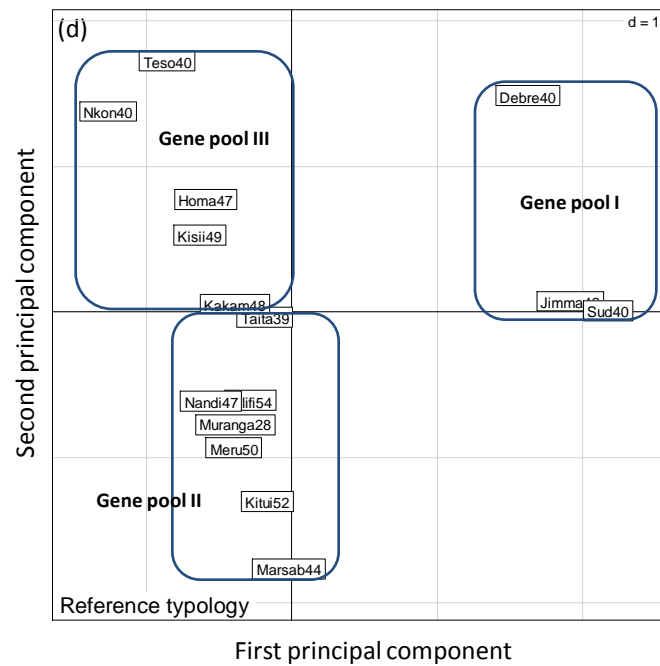
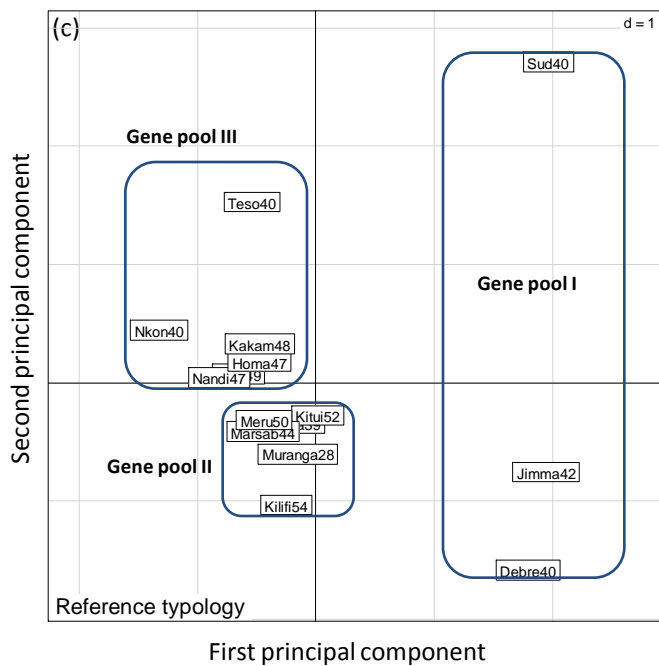
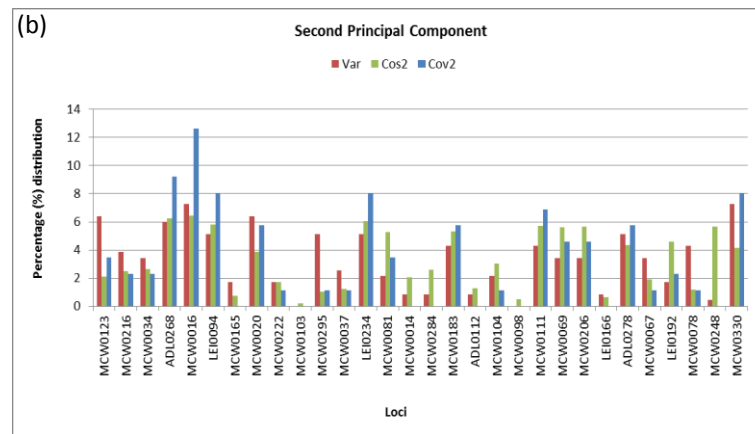
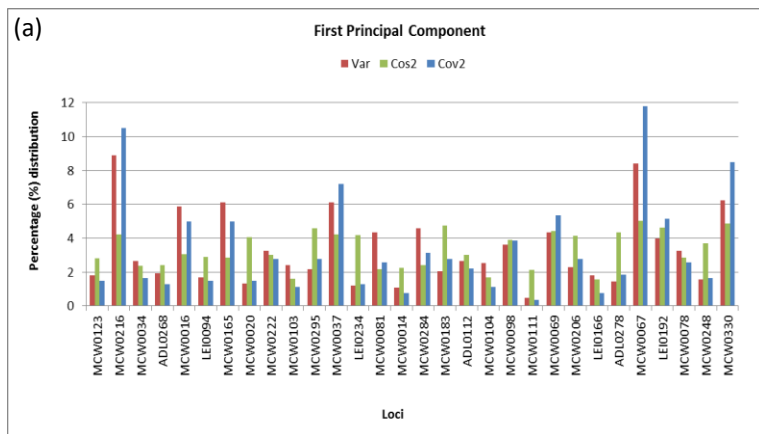
Supplementary Figure S3a



Supplementary Figure S3b



# Supplementary Figure S4



# Supplementary Figure S5

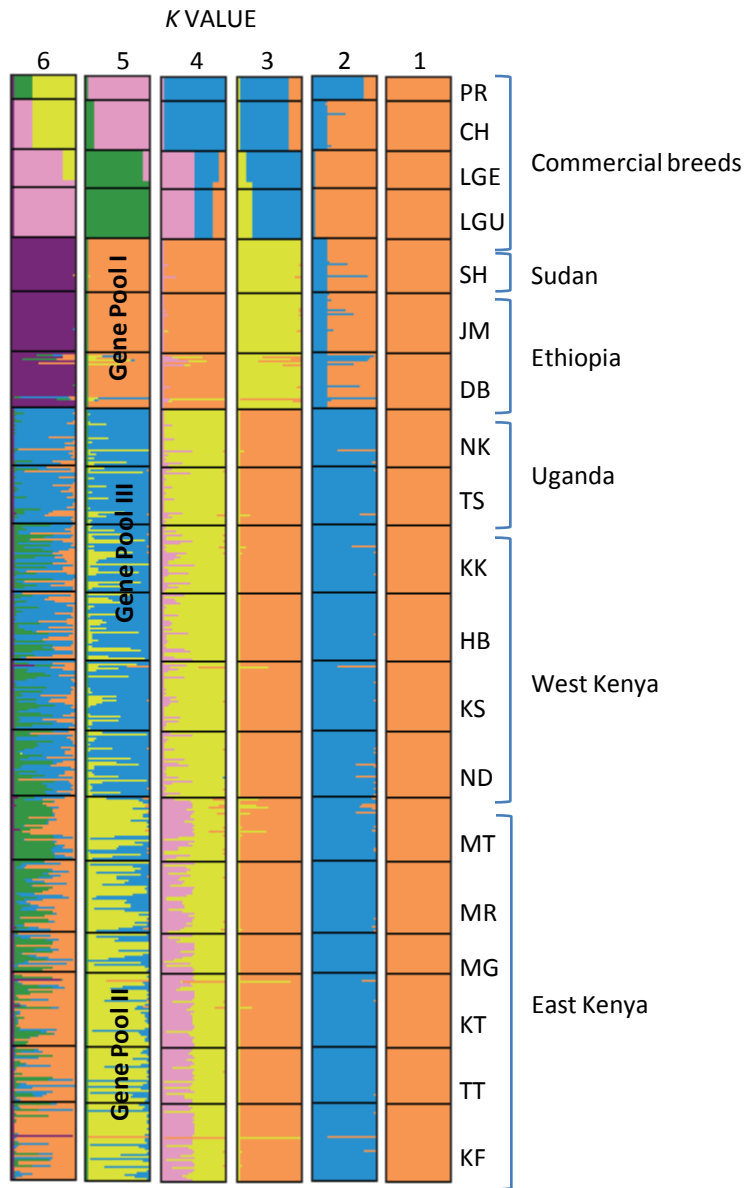


Figure S5a

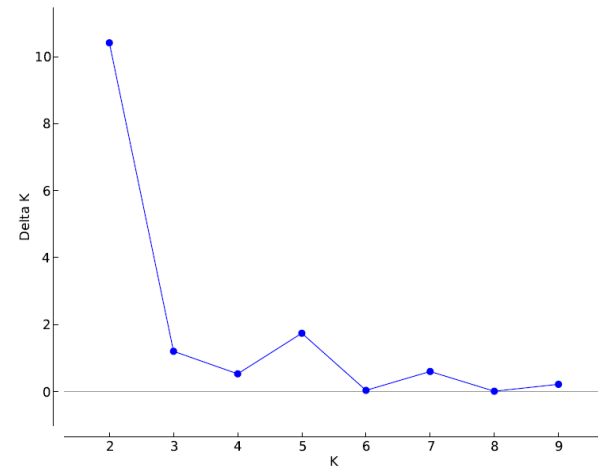


Figure S5b

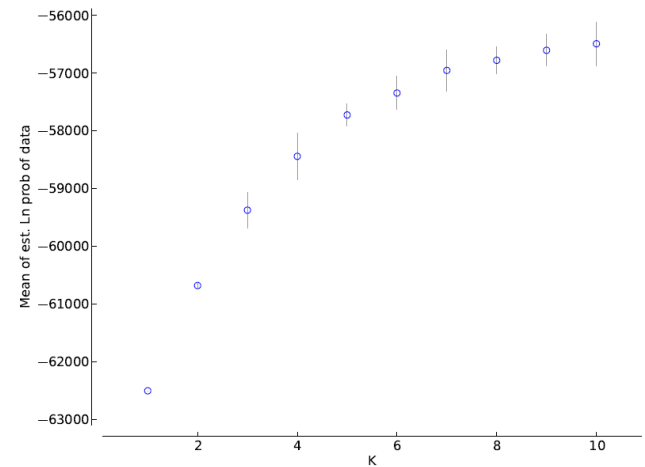
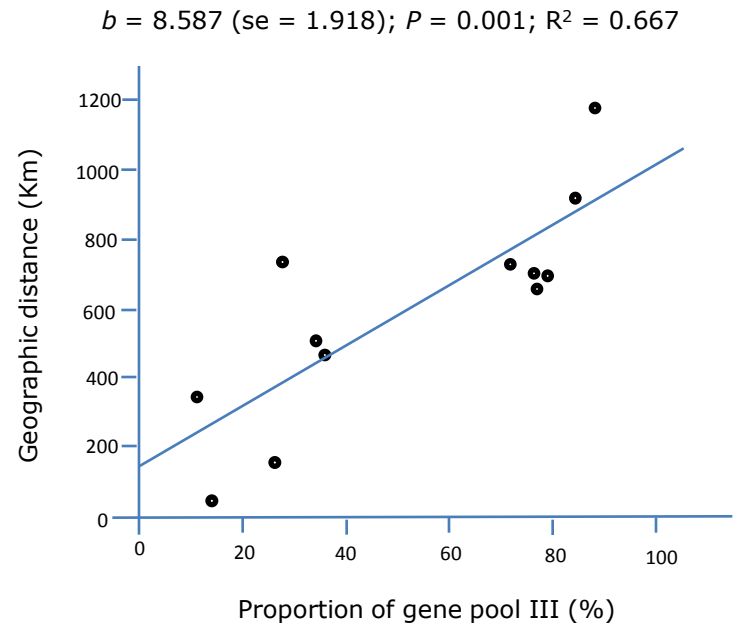
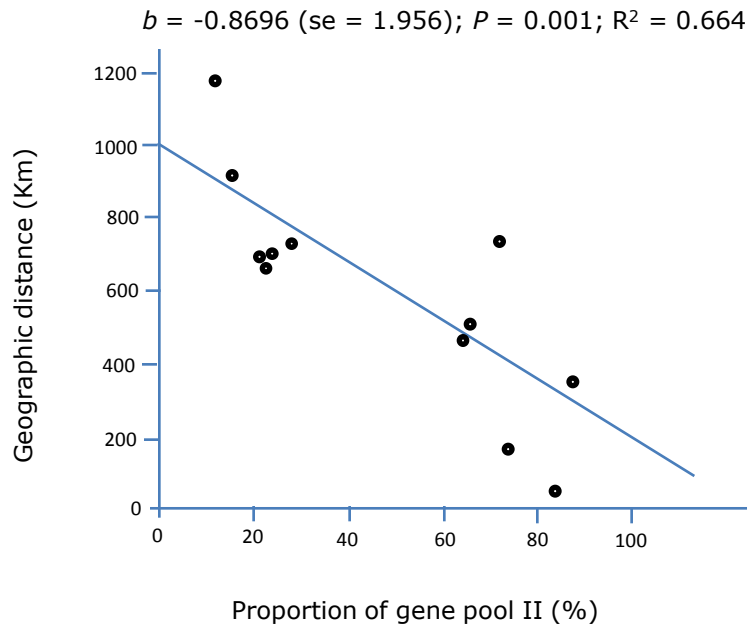


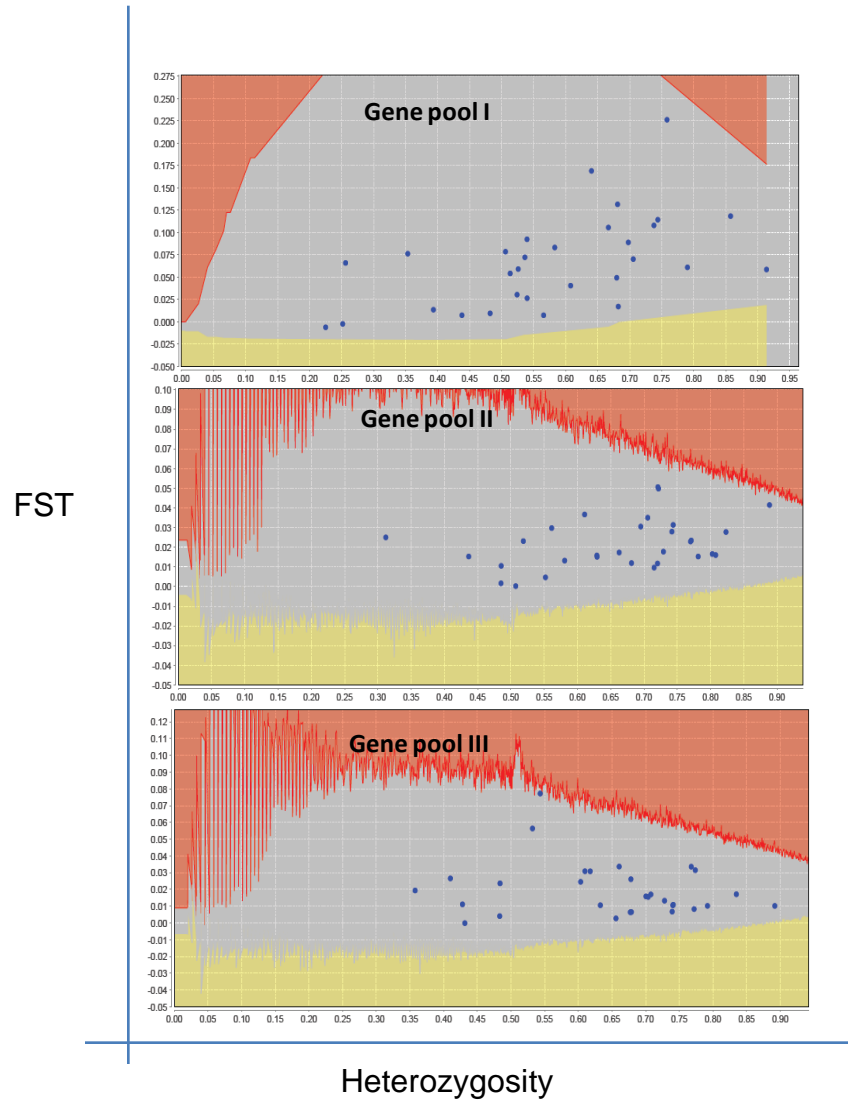
Figure S5c

## Supplementary Figure S6

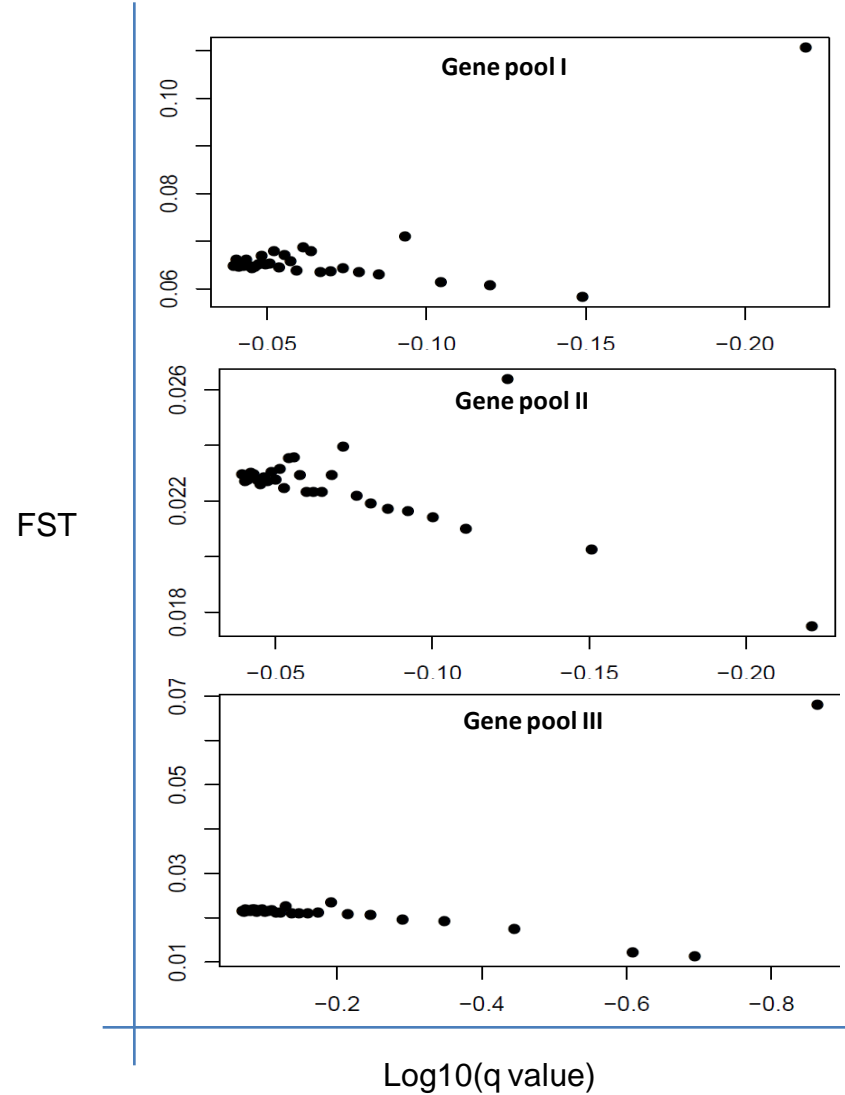


# Supplementary Figure S7

(a)



(b)

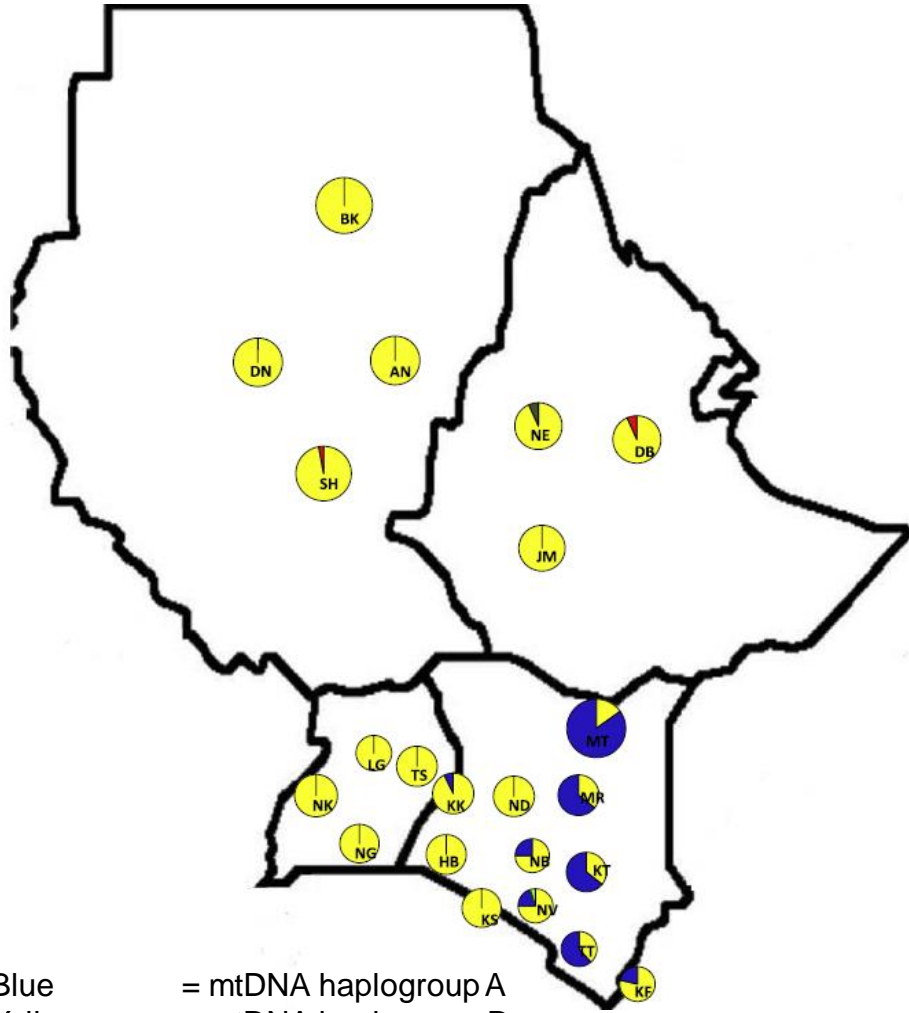


● Markers — Candidate balancing selection — Candidate neutral — Candidate positive selection



# Supplementary Figure S8

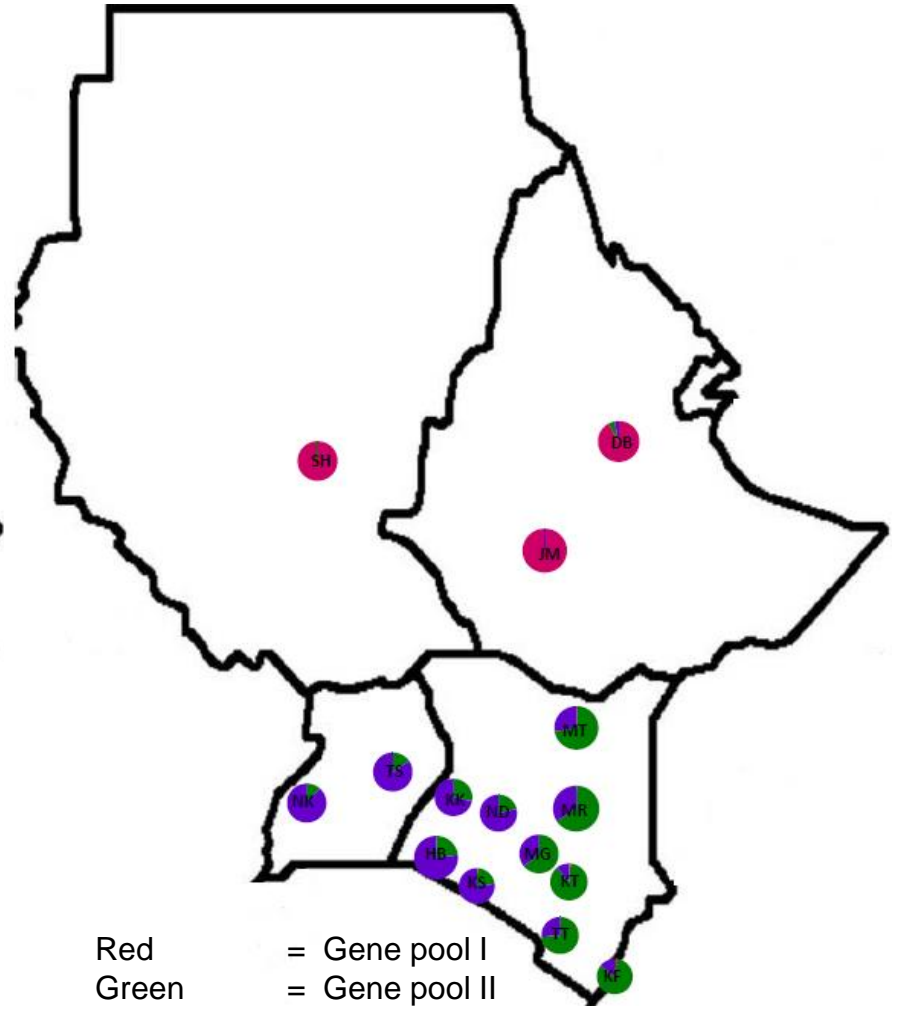
## mtDNA haplogroups



Blue  
Yellow

= mtDNA haplogroup A  
= mtDNA haplogroup D

## Microsatellite gene pools



Red  
Green  
Purple

= Gene pool I  
= Gene pool II  
= Gene pool III