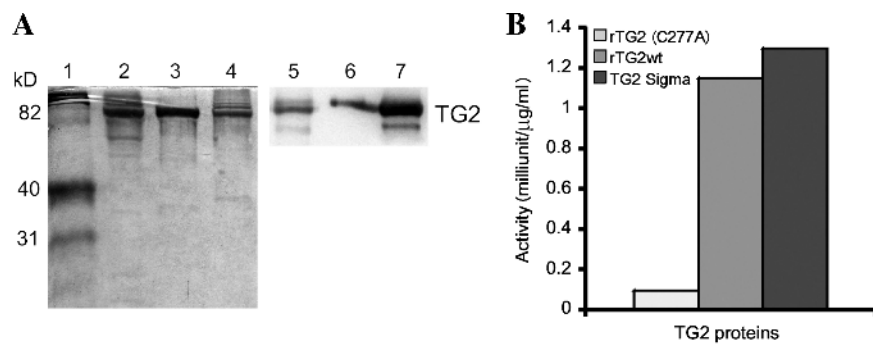
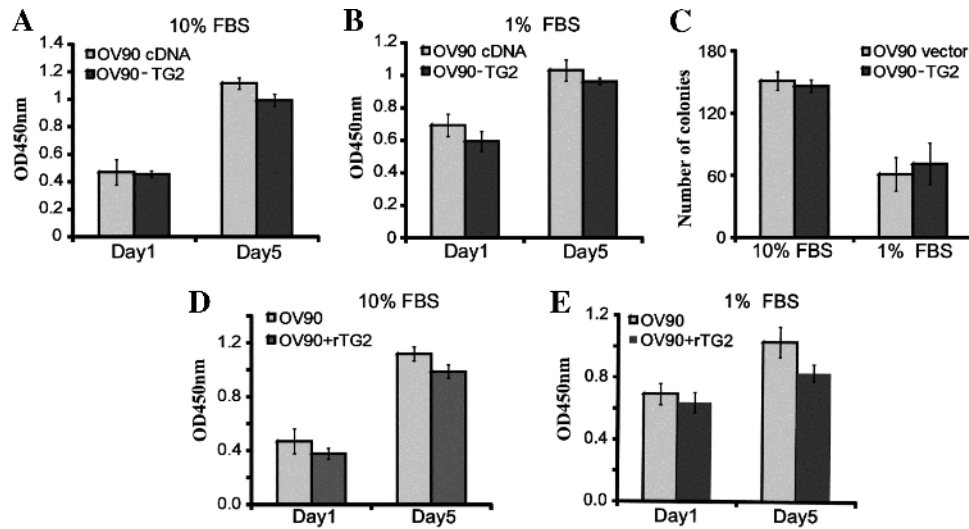


**Table W1.** Estimated TG2 Concentrations in OC Ascites (see Figure 1B).

Sample No.	Estimated TG2 Concentration ( $\mu\text{g/ml}$ )
1	~6
2	~0.8
9	~0.8
10	~0.3
11	~0.1
12	~0.8
13	~10
20	~0.3
21	~1
22	~1.7



**Figure W1.** Purified rTG2. (A) Purified protein samples were run on SDS-PAGE and stained with Coomassie brilliant blue (left panel): lane 1, protein standard; lane 2, commercially purified TG2 (Sigma); lane 3, recombinant purified His<sub>6</sub>-TG2 (rTG2). Western blot analysis for TG2 (right panel): lane 5, commercially purified TG2; lane 6, rTG2; lane 7, C277A TG2 mutant. (B) TG2 enzymatic activity for rTG2, C277A mutant, and commercial TG2.



**Figure W2.** Effects of intracellular TG2 overexpression on cancer cell proliferation. (A and B) BrdU assay measures cell proliferation of OV90-TG2 and control cells grown in normal (10% FBS; A) or low serum (1% FBS; B) conditions. Bars represent averages of four replicates  $\pm$  SE. The experiment was repeated with similar results. (C) Clonogenic assay measured number of colonies generated from OV90-TG2 and control cells grown in normal (10% FBS) or low serum (1% FBS) conditions. Bars represent average number of colonies in three replicates  $\pm$  SE. (D and E) BrdU assay measures cell proliferation of OV90 cells grown in normal (10% FBS; D) or low serum (1% FBS; E) conditions and treated with buffer or rTG2 (1  $\mu$ g/ml). Bars represent averages of four replicates  $\pm$  SE. The experiment was repeated with similar results.