

| Group | Pattern      | Key | Sample ID    | Species      | Source       | Location     |              | Note |  |
|-------|--------------|-----|--------------|--------------|--------------|--------------|--------------|------|--|
| 1     | 1            | 1   | 483134518R   | M. abscessus | Pulmonary    | Brisbane Sou |              |      |  |
|       |              | 2   | 483132823R   | M. abscessus | Pulmonary    | Brisbane Sou |              |      |  |
|       |              | 3   | 29457824R    | M. abscessus | Control      | Wild type    |              |      |  |
|       | 2            | 4   | 4            | 450617067R   | M. abscessus | Pulmonary    | Brisbane Nor |      |  |
|       |              |     | 5            | 379715752R   | M. abscessus | Cutaneous/so | Brisbane Wes |      |  |
|       |              |     | 6            | Tank BWCPCR  | M. abscessus | Rainwater ta | Brisbane Sou |      |  |
|       |              |     | 7            | 483138005R   | M. abscessus | Pulmonary    | Brisbane Nor |      |  |
|       |              |     | 8            | 274808657R   | M. abscessus | Lap band inf | Far North Qu |      |  |
|       |              |     | 9            | 454458408R   | M. abscessus | Pulmonary CF | South Coast  |      |  |
|       | 3            | 10  | 10           | Myc_ BH Bath | M. abscessus | Bathroom tap | Brisbane Nor |      |  |
|       |              |     | 11           | Myc_ BH Bath | M. abscessus | Bathroom tap | Brisbane Nor |      |  |
| 4     | 12           | 12  | 360024143R   | M. abscessus | Pulmonary    | Brisbane Eas |              |      |  |
|       |              | 13  | 419312442R   | M. abscessus | Pulmonary    | South Coast  |              |      |  |
|       |              | 14  | M.abscessus  | M. abscessus | Laboratory   | Control      |              |      |  |
|       | 5            | 15  | 15           | 379714981R   | M. abscessus | Pulmonary    | Brisbane Nor |      |  |
|       |              |     | 16           | MCG Pool Wat | M. abscessus | Swimming poo | Brisbane Sou |      |  |
|       | 6            | 17  | 17           | 492604092    | M. abscessus | Pulmonary CF | Wide Bay     |      |  |
|       |              |     | 18           | 324036586    | M. abscessus | Pulmonary    | Brisbane Sou |      |  |
|       | 7            | 19  | 19           | 483127533R   | M. abscessus | Pulmonary    | Central QLD  |      |  |
|       |              |     | 20           | 505126835    | M. abscessus | Pulmonary CF | Brisbane Eas |      |  |
|       | 8            | 21  | 21           | 505090218    | M. abscessus | Pulmonary CF | Brisbane Eas |      |  |
|       |              |     | 22           | Sp 320_CPC 1 | M. abscessus | Municipal Wa | Brisbane Wes |      |  |
| 2     | 12           | 23  | 255815033    | M. abscessus | Pulmonary    | Brisbane Nor |              |      |  |
|       |              | 24  | 318566653    | M. abscessus | Bloodstream  | Brisbane Cen |              |      |  |
|       | 13           | 25  | 25           | 275134670    | M. abscessus | Pulmonary    | Brisbane Nor |      |  |
|       |              |     | 26           | 393818813    | M. abscessus | Pulmonary    | Brisbane Nor |      |  |
|       | 14           | 27  | 27           | 275134456    | M. abscessus | Device/Line  | Central QLD  |      |  |
|       |              |     | 28           | 328446647    | M. abscessus | Pulmonary    | Wide Bay     |      |  |
|       | 15           | 29  | 29           | 328445363    | M. abscessus | Pulmonary    | Brisbane Nor |      |  |
|       |              |     | 30           | 417748364rep | M. abscessus | Pulmonary    | Brisbane Sou |      |  |
|       |              |     | 31           | 29386674     | M. abscessus | Soft Tissue  | Brisbane Sou |      |  |
|       |              |     | 32           | 291938261    | M. abscessus | Pulmonary    | Brisbane Nor |      |  |
|       |              |     | 33           | 275135839    | M. abscessus | Pulmonary    | Brisbane Cen |      |  |
|       |              |     | 34           | 321221479    | M. abscessus | Pulmonary    | Brisbane Nor |      |  |
|       |              |     | 35           | 318543716    | M. abscessus | Pulmonary    | West Moreton |      |  |
|       |              |     | 36           | 404271453    | M. abscessus | Pulmonary    | Brisbane Sou |      |  |
|       |              |     | 37           | 328449605    | M. abscessus | Pulmonary CF | Brisbane Eas |      |  |
| 38    |              |     | 328447721    | M. abscessus | Pulmonary    | Brisbane Nor |              |      |  |
| 39    |              |     | 275136432rep | M. abscessus | Pulmonary    | Brisbane Eas |              |      |  |
| 40    | 275135807rep | 40  | 275135807rep | M. abscessus | Cutaneous/so | Far North Qu |              |      |  |
|       |              | 41  | 394473438rep | M. abscessus | Pulmonary    | South Coast  |              |      |  |
| 42    | SP 101 WCPC_ | 42  | SP 101 WCPC_ | M. abscessus | Municipal Wa | Brisbane Sou |              |      |  |
|       |              | 43  | 275133084    | M. abscessus | Pulmonary    | Brisbane Sou |              |      |  |

|   |    |    |              |              |              |              |  |  |  |
|---|----|----|--------------|--------------|--------------|--------------|--|--|--|
|   |    | 44 | 377711337    | M. abscessus | Cutaneous/so | Brisbane Nor |  |  |  |
|   |    | 45 | 351754090    | M. abscessus | Pulmonary    | Brisbane Nor |  |  |  |
|   |    | 46 | 321981832    | M. abscessus | Injection Si | Brisbane Eas |  |  |  |
|   |    | 47 | 328446068    | M. abscessus | Injection Si | Brisbane Nor |  |  |  |
|   |    | 48 | 379755630rep | M. abscessus | Pulmonary CF | West Moreton |  |  |  |
| 3 | 16 | 49 | 409899621rep | M. abscessus | Pulmonary    | Brisbane Wes |  |  |  |
|   | 17 | 50 | 381048028rep | M. abscessus | Cutaneous/so | Brisbane Sou |  |  |  |
|   |    | 51 | SP142 WCPC R | M. abscessus | Municipal Wa | Brisbane Wes |  |  |  |
|   |    | 52 | 328448789    | M. abscessus | Pulmonary    | Brisbane Sou |  |  |  |
|   |    | 53 | 328440882rep | M. abscessus | Pulmonary    | Brisbane Nor |  |  |  |
|   |    | 54 | 271995461    | M. abscessus | Pulmonary    | South Coast  |  |  |  |
|   |    | 55 | 29389421rep  | M. abscessus | Injection Si | Brisbane Sou |  |  |  |
|   |    | 56 | 275139959    | M. abscessus | Pulmonary    | Brisbane Sou |  |  |  |
|   |    | 57 | SP114 R      | M. abscessus | Municipal Wa | Brisbane Sou |  |  |  |
|   |    | 58 | 29385807rep  | M. abscessus | Pulmonary    | Brisbane Sou |  |  |  |
|   |    | 59 | SP101 R      | M. abscessus | Municipal Wa | Brisbane Sou |  |  |  |
|   |    | 60 | 328558972rep | M. abscessus | Pulmonary    | Brisbane Eas |  |  |  |
|   |    | 61 | SP1100207200 | M. abscessus | Municipal Wa | Brisbane Wes |  |  |  |
|   |    | 62 | SP110 white  | M. abscessus | Municipal Wa | Brisbane Wes |  |  |  |
|   |    | 63 | 275137963    | M. abscessus | Pulmonary    | Brisbane Eas |  |  |  |
|   |    | 64 | 311911744rep | M. abscessus | Pulmonary    | Wide Bay     |  |  |  |
|   |    | 65 | 296555363    | M. abscessus | Pulmonary    | Brisbane Sou |  |  |  |
|   |    | 66 | SP101 OWPWC  | M. abscessus | Municipal Wa | Brisbane Sou |  |  |  |
|   |    | 67 | SP42 WCPC R  | M. abscessus | Municipal Wa | Brisbane Sou |  |  |  |
|   |    | 68 | 275134359rep | M. abscessus | Cutaneous/so | Wide Bay     |  |  |  |
|   |    | 69 | 341211044rep | M. abscessus | Cutaneous/so | South Coast  |  |  |  |
|   |    | 70 | 328444147rep | M. abscessus | Surgical wou | Brisbane Sou |  |  |  |
|   |    | 71 | 336395997rep | M. abscessus | Pulmonary CF | Brisbane Eas |  |  |  |
|   | 18 | 72 | 318540128    | M. abscessus | Pulmonary    | Brisbane Nor |  |  |  |
|   | 19 | 73 | 328447600rep | M. abscessus | Cutaneous/So | Brisbane Nor |  |  |  |
| 4 | 20 | 74 | 387640523rep | M.a bscessus | Surgical wou | Brisbane Cen |  |  |  |
|   |    | 75 | 297683281    | M. abscessus | Pulmonary    | Brisbane Wes |  |  |  |
|   |    | 76 | SP110 R      | M. abscessus | Municipal wa | Brisbane Wes |  |  |  |
|   |    | 77 | 366921511    | M. abscessus | Pulmonary    | Brisbane Eas |  |  |  |
|   | 21 | 78 | 379714112rep | M. abscessus | Pulmonary    | Sunshine Coa |  |  |  |
|   | 22 | 79 | SP114 WCPC R | M. abscessus | Municipal wa | Brisbane Sou |  |  |  |
|   |    | 80 | 280885764rep | M. abscessus | Pulmonary    | Brisbane Wes |  |  |  |
|   | 23 | 81 | 275138510    | M. abscessus | Cutaneous/So | South Coast  |  |  |  |
| 5 | 24 | 82 | 274804151    | M. abscessus | Surgical wou | Brisbane Cen |  |  |  |
|   | 25 | 83 | 274802998    | M. abscessus | Cutaneous/So | South Coast  |  |  |  |
| 6 | 26 | 84 | 275136552    | M. abscessus | Pulmonary    | Brisbane Nor |  |  |  |
|   |    | 85 | 29387102     | M. abscessus | Pulmonary    | Brisbane Wes |  |  |  |
|   |    | 86 | 275133697rep | M. abscessus | Pulmonary    | Brisbane Sou |  |  |  |
|   | 27 | 87 | 328447776rep | M. abscessus | Pulmonary    | Brisbane Sou |  |  |  |
|   | 28 | 88 | 390900825rep | M. abscessus | Pulmonary    | Brisbane Sou |  |  |  |
|   |    | 89 | 328447798rep | M. abscessus | Pulmonary    | Brisbane Sou |  |  |  |
|   |    | 90 | 427760051rep | M. abscessus | Pulmonary    | Brisbane Nor |  |  |  |
|   |    | 91 | 275134478    | M. abscessus | Pulmonary    | Brisbane Nor |  |  |  |

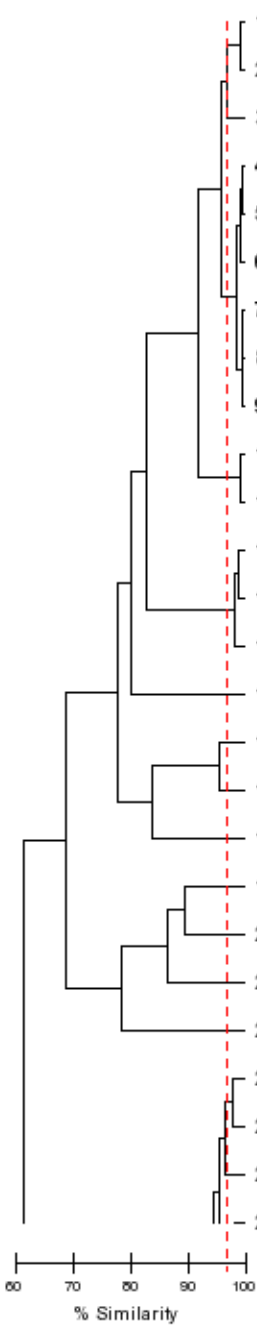
Reviewed by

Date

Approved by

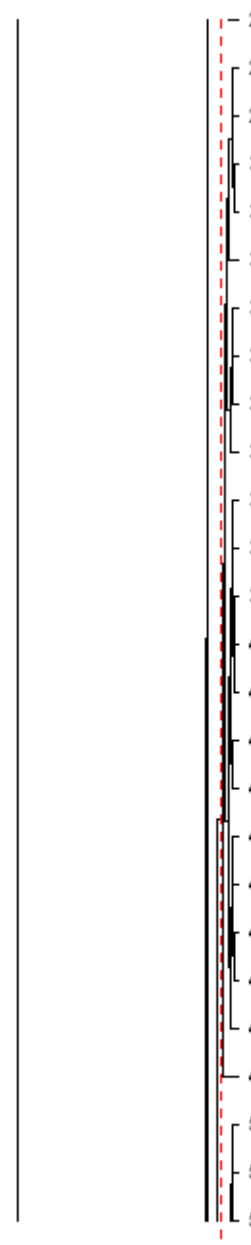
Date

---

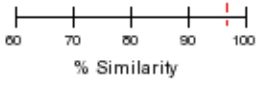
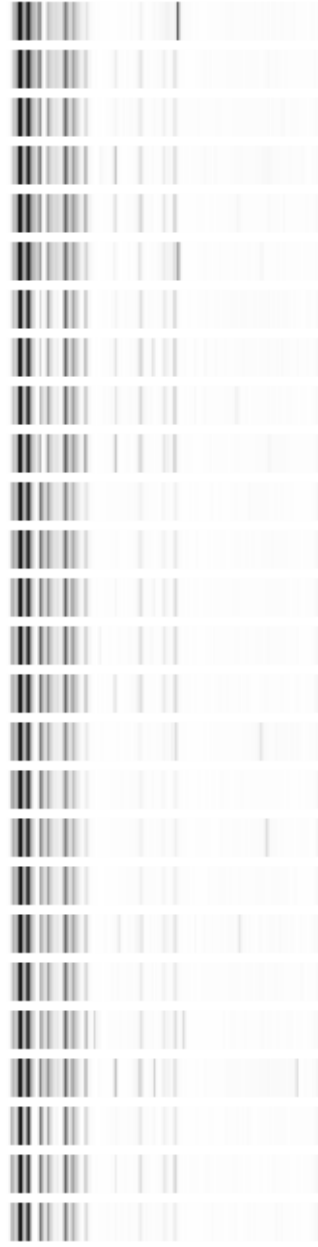


|     | P  | G | Sample ID         | Species      | Source           | Location         |
|-----|----|---|-------------------|--------------|------------------|------------------|
| 1   | 1  | 1 | 483134518R        | M. abscessus | Pulmonary        | Brisbane South   |
| 2   | 1  | 1 | 483132823R        | M. abscessus | Pulmonary        | Brisbane South   |
| 3   | 1  | 1 | 29457824R         | M. abscessus | Control          | Wild type        |
| 4   | 2  | 1 | 450617067R        | M. abscessus | Pulmonary        | Brisbane North   |
| 5   | 2  | 1 | 379715752R        | M. abscessus | Cutaneous/soft t | Brisbane West    |
| 6   | 2  | 1 | Tank BWCP         | M. abscessus | Rainwater tank   | Brisbane South   |
| 7   | 2  | 1 | 483138005R        | M. abscessus | Pulmonary        | Brisbane North   |
| 8   | 2  | 1 | 274808657R        | M. abscessus | Lap band infecti | Far North Queens |
| 9   | 2  | 1 | 454458408R        | M. abscessus | Pulmonary CF     | South Coast Hint |
| 10  | 3  | 1 | Myco_BH Bathroom  | M. abscessus | Bathroom tap wat | Brisbane North   |
| 11  | 3  | 1 | Myco_BH Bathroom  | M. abscessus | Bathroom tap wat | Brisbane North   |
| 12  | 4  |   | 360024143R        | M. abscessus | Pulmonary        | Brisbane East (B |
| 13  | 4  |   | 419312442R        | M. abscessus | Pulmonary        | South Coast      |
| 14  | 4  |   | M. abscessus cont | M. abscessus | Laboratory       | Control          |
| 15  | 5  |   | 379714981R        | M. abscessus | Pulmonary        | Brisbane North   |
| 16♦ | 6  |   | MCG Pool Water R  | M. abscessus | Swimming pool wa | Brisbane South   |
| 17  | 6  |   | 492604092         | M. abscessus | Pulmonary CF     | Wide Bay         |
| 18  | 7  |   | 324036586         | M. abscessus | Pulmonary        | Brisbane South   |
| 19  | 8  |   | 483127533R        | M. abscessus | Pulmonary        | Central QLD      |
| 20  | 9  |   | 505126835         | M. abscessus | Pulmonary CF     | Brisbane East (B |
| 21  | 10 |   | 505090218         | M. abscessus | Pulmonary CF     | Brisbane East (B |
| 22  | 11 |   | Sp 320_CPC 14_6_  | M. abscessus | Municipal Water  | Brisbane West    |
| 23  | 12 | 2 | 256815033         | M. abscessus | Pulmonary        | Brisbane North   |
| 24  | 12 | 2 | 318566653         | M. abscessus | Bloodstream      | Brisbane Central |
| 25  | 13 | 2 | 275134670         | M. abscessus | Pulmonary        | Brisbane North   |
| 26  | 14 | 2 | 393818813         | M. abscessus | Pulmonary        | Brisbane North   |

Similarity Line: 96.7%  
 ♦ Discordant based on Sim Line: 2



|    | P  | G | Sample ID      | Species      | Source           | Location         |
|----|----|---|----------------|--------------|------------------|------------------|
| 27 | 14 | 2 | 275134456      | M. abscessus | Device/Line infe | Central QLD      |
| 28 | 15 | 2 | 328446647      | M. abscessus | Pulmonary        | Wide Bay         |
| 29 | 15 | 2 | 328445363      | M. abscessus | Pulmonary        | Brisbane North   |
| 30 | 15 | 2 | 417748364rep   | M. abscessus | Pulmonary        | Brisbane South   |
| 31 | 15 | 2 | 29386674       | M. abscessus | Soft Tissue      | Brisbane South   |
| 32 | 15 | 2 | 291938261      | M. abscessus | Pulmonary        | Brisbane North   |
| 33 | 15 | 2 | 275136839      | M. abscessus | Pulmonary        | Brisbane Central |
| 34 | 15 | 2 | 321221479      | M. abscessus | Pulmonary        | Brisbane North   |
| 35 | 15 | 2 | 318543716      | M. abscessus | Pulmonary        | West Moreton     |
| 36 | 15 | 2 | 404271453      | M. abscessus | Pulmonary        | Brisbane South   |
| 37 | 15 | 2 | 328449605      | M. abscessus | Pulmonary CF     | Brisbane East    |
| 38 | 15 | 2 | 328447721      | M. abscessus | Pulmonary        | Brisbane North   |
| 39 | 15 | 2 | 275136432rep   | M. abscessus | Pulmonary        | Brisbane East (B |
| 40 | 15 | 2 | 275136807rep   | M. abscessus | Cutaneous/soft t | Far North Queens |
| 41 | 15 | 2 | 394473438rep   | M. abscessus | Pulmonary        | South Coast      |
| 42 | 15 | 2 | SP 101 WCPC_R1 | M. abscessus | Municipal Water  | Brisbane South   |
| 43 | 15 | 2 | 275133084      | M. abscessus | Pulmonary        | Brisbane South   |
| 44 | 15 | 2 | 377711337      | M. abscessus | Cutaneous/soft t | Brisbane North   |
| 45 | 15 | 2 | 351754090      | M. abscessus | Pulmonary        | Brisbane North   |
| 46 | 15 | 2 | 321981832      | M. abscessus | Injection Site   | Brisbane East (B |
| 47 | 15 | 2 | 328446068      | M. abscessus | Injection Site   | Brisbane North   |
| 48 | 15 | 2 | 379755630rep   | M. abscessus | Pulmonary CF     | West Moreton     |
| 49 | 16 | 3 | 409899621rep   | M. abscessus | Pulmonary        | Brisbane West    |
| 50 | 17 | 3 | 381048028rep   | M. abscessus | Cutaneous/soft t | Brisbane South   |
| 51 | 17 | 3 | SP142 WCPC R   | M. abscessus | Municipal Water  | Brisbane West    |
| 52 | 17 | 3 | 328448789      | M. abscessus | Pulmonary        | Brisbane South   |

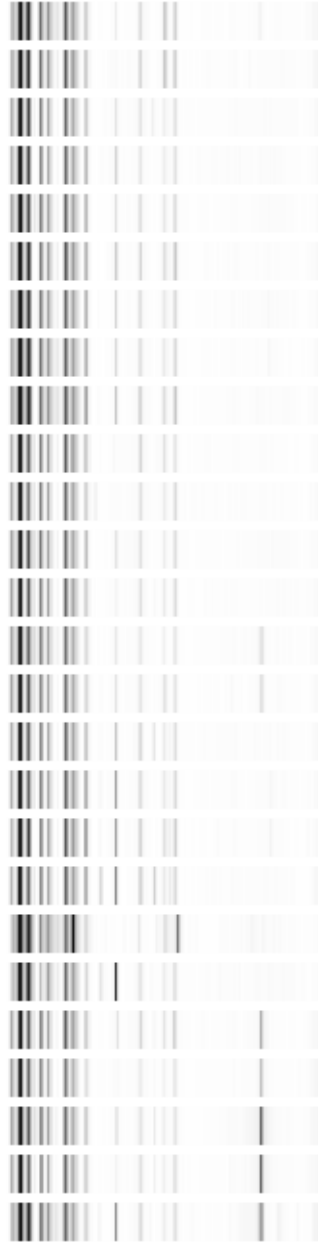


Similarity Line: 96.7%

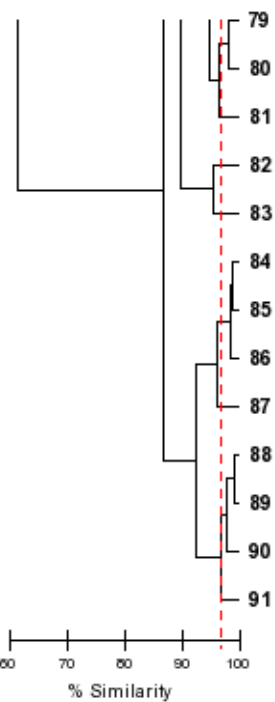
◆ Discordant based on Sim Line: 2



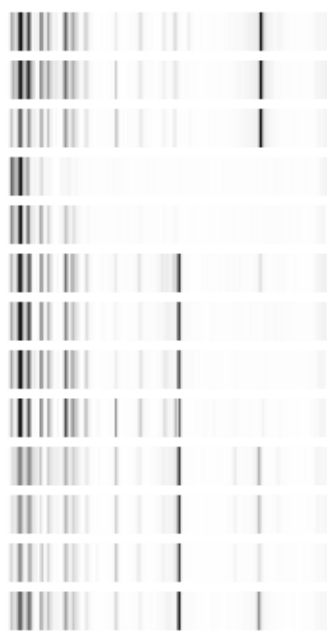
|    | P  | G | Sample ID      | Species      | Source           | Location         |
|----|----|---|----------------|--------------|------------------|------------------|
| 53 | 17 | 3 | 328440882rep   | M. abscessus | Pulmonary        | Brisbane North   |
| 54 | 17 | 3 | 271996461      | M. abscessus | Pulmonary        | South Coast      |
| 55 | 17 | 3 | 29389421rep    | M. abscessus | Injection Site   | Brisbane South   |
| 56 | 17 | 3 | 275139969      | M. abscessus | Pulmonary        | Brisbane South   |
| 57 | 17 | 3 | SP114 R        | M. abscessus | Municipal Water  | Brisbane South   |
| 58 | 17 | 3 | 29385807rep    | M. abscessus | Pulmonary        | Brisbane South   |
| 59 | 17 | 3 | SP101 R        | M. abscessus | Municipal Water  | Brisbane South   |
| 60 | 17 | 3 | 328558972rep   | M. abscessus | Pulmonary        | Brisbane East (B |
| 61 | 17 | 3 | SP11002072007R | M. abscessus | Municipal Water  | Brisbane West    |
| 62 | 17 | 3 | SP110 white R  | M. abscessus | Municipal Water  | Brisbane West    |
| 63 | 17 | 3 | 275137963      | M. abscessus | Pulmonary        | Brisbane East    |
| 64 | 17 | 3 | 311911744rep   | M. abscessus | Pulmonary        | Wide Bay         |
| 65 | 17 | 3 | 296555363      | M. abscessus | Pulmonary        | Brisbane South   |
| 66 | 17 | 3 | SP101 OWPWC R  | M. abscessus | Municipal Water  | Brisbane South   |
| 67 | 17 | 3 | SP42 WCPC R    | M. abscessus | Municipal Water  | Brisbane South   |
| 68 | 17 | 3 | 275134359rep   | M. abscessus | Cutaneous/soft t | Wide Bay         |
| 69 | 17 | 3 | 341211044rep   | M. abscessus | Cutaneous/soft t | South Coast      |
| 70 | 17 | 3 | 328444147rep   | M. abscessus | Surgical wound   | Brisbane South   |
| 71 | 17 | 3 | 336395997rep   | M. abscessus | Pulmonary CF     | Brisbane East (B |
| 72 | 18 |   | 318540128      | M. abscessus | Pulmonary        | Brisbane North   |
| 73 | 19 |   | 328447600rep   | M. abscessus | Cutaneous/Soft t | Brisbane North   |
| 74 | 20 | 4 | 387640523rep   | M. abscessus | Surgical wound   | Brisbane Central |
| 75 | 20 | 4 | 297683281      | M. abscessus | Pulmonary        | Brisbane West    |
| 76 | 20 | 4 | SP110 R        | M. abscessus | Municipal water  | Brisbane West    |
| 77 | 20 | 4 | 366921511      | M. abscessus | Pulmonary        | Brisbane East    |
| 78 | 21 | 4 | 379714112rep   | M. abscessus | Pulmonary        | Sunshine Coast   |



Similarity Line: 96.7%  
 ♦ Discordant based on Sim Line: 2



|    | <b>P</b> | <b>G</b> | <b>Sample ID</b> | <b>Species</b> | <b>Source</b>    | <b>Location</b>  |
|----|----------|----------|------------------|----------------|------------------|------------------|
| 79 | 22       | 4        | SP114 WCPC R     | M. abscessus   | Municipal water  | Brisbane South   |
| 80 | 22       | 4        | 280885764rep     | M. abscessus   | Pulmonary        | Brisbane West    |
| 81 | 23       | 4        | 275138510        | M. abscessus   | Cutaneous/Soft t | South Coast      |
| 82 | 24       | 5        | 274804151        | M. abscessus   | Surgical wound   | Brisbane Central |
| 83 | 25       | 5        | 274802998        | M. abscessus   | Cutaneous/Soft t | South Coast      |
| 84 | 26       | 6        | 275136552        | M. abscessus   | Pulmonary        | Brisbane North   |
| 85 | 26       | 6        | 29387102         | M. abscessus   | Pulmonary        | Brisbane West    |
| 86 | 26       | 6        | 275133697rep     | M. abscessus   | Pulmonary        | Brisbane South   |
| 87 | 27       | 6        | 328447776rep     | M. abscessus   | Pulmonary        | Brisbane South   |
| 88 | 28       |          | 390900825rep     | M. abscessus   | Pulmonary        | Brisbane South   |
| 89 | 28       |          | 328447798rep     | M. abscessus   | Pulmonary        | Brisbane South   |
| 90 | 28       |          | 427760051rep     | M. abscessus   | Pulmonary        | Brisbane North   |
| 91 | 28       |          | 275134478        | M. abscessus   | Pulmonary        | Brisbane North   |



Similarity Line: 96.7%  
 ♦ Discordant based on Sim Line: 2

Diversilab v3.4  
PC  
#696

Note: Spacing between samples on the scatterplot may be distorted  
if the dataset is large and/or if there is no distinct clustering.

Location:

- Brisbane Central
- Brisbane East
- Brisbane East (Bay)
- Brisbane North
- Brisbane South
- Brisbane West
- Central QLD
- Control
- Far North Queensland
- South Coast
- South Coast Hinterland
- Sunshine Coast
- West Moreton
- Wide Bay
- Wild type

Gridline Spacing: 5% Similarity

