

Fig.S1 Bora is phosphorylated by ATR at T501, which targets Bora to β -TRCP-mediated degradation.

(A) 293T cells transfected with constructs encoding Flag-wild-type (WT) Bora or T501A Bora (T501A) were irradiated with UV and 4hrs later cells were lysed and proteins were immunoprecipitated with anti-Flag antibody and blotted with ATM/ATR phospho-substrate antibody. (B) (C) H1299 cells transfected with indicated constructs were pretreated with inhibitors for PIKKs (Caffeine, CAF) and then cells were UV irradiated, and Bora phosphorylation was examined as in Figures 2B.

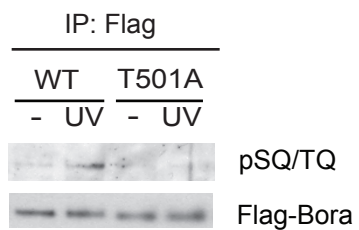
Fig.S2 Analysis of conserved SQ/TQ motifs of Bora protein sequence in human, mouse, rat and xenopus.

Protein sequences were analyzed on the multalin website.

<http://multalin.toulouse.inra.fr/multalin/> Red color letters indicate conserved amino acids, yellow boxes indicate SQ/TQ motif and blue box indicates the conserved TQ motif from human to Xenopus.

FigS1

A



B

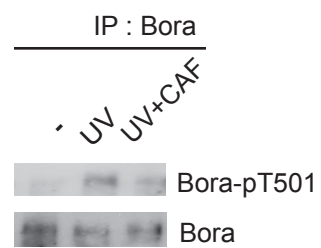


Fig S2

