

Supporting Information

Tang et al. 10.1073/pnas.1305187110

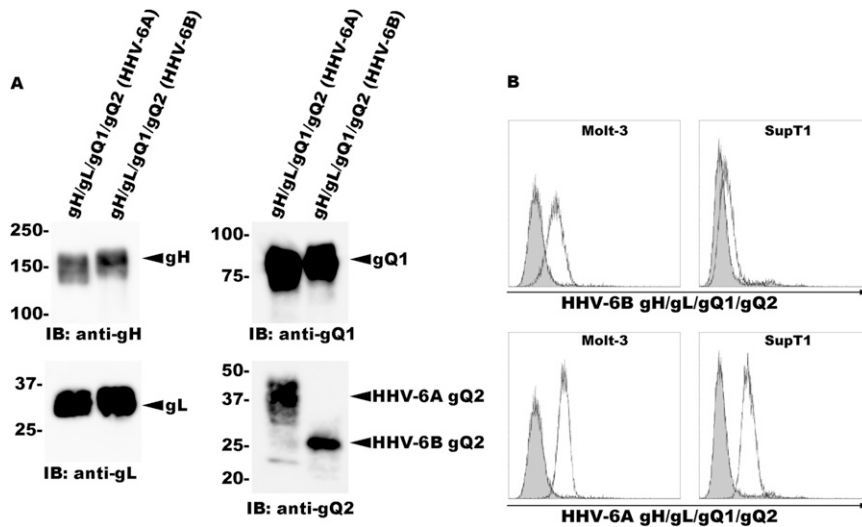


Fig. S1. Specific binding of soluble HHV-6B gH/gL/gQ1/gQ2 complex to virus permissive cells. (A) Secretion of the AgHFc/AgL/AgQ1/AgQ2 or BgHFc/BgL/BgQ1/BgQ2 complex. 293T cells were cotransfected with several plasmids harboring individual molecules. The culture medium was harvested 2 d after transfection, and the recombinant proteins were purified by Ni-NTA affinity chromatography and subjected to immunoblot analysis using antibodies for each component of the complex. (B) The HHV-6B ligand binds to Molt-3 (HHV-6B permissive) but not SupT1 (HHV-6B nonpermissive) cells. Molt-3 (HHV-6B permissive) or SupT1 (HHV-6B nonpermissive) cells were incubated with soluble HHV-6A- or HHV-6B gHFc/gL/gQ1/gQ2 complex at 4 °C for 2 h, stained with Alexa Fluor 488 goat anti-human IgG antibody at 4 °C for 1 h, and subjected to FACS analysis. Gray shading, incubated with Fc as control.