

Figure S4. The phylogeny of mainland *Helianthus* species used for comparisons with island *Schiedea*.

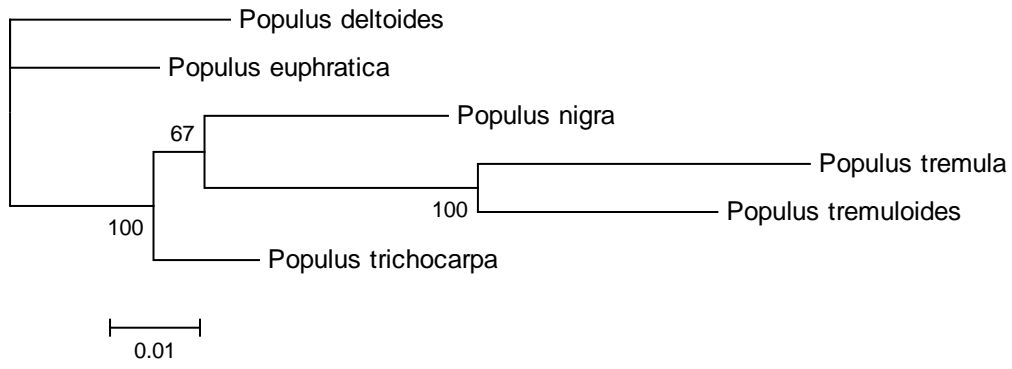


Figure S5. The phylogeny of mainland *Populus* species used for comparisons with island *Schiedea*.

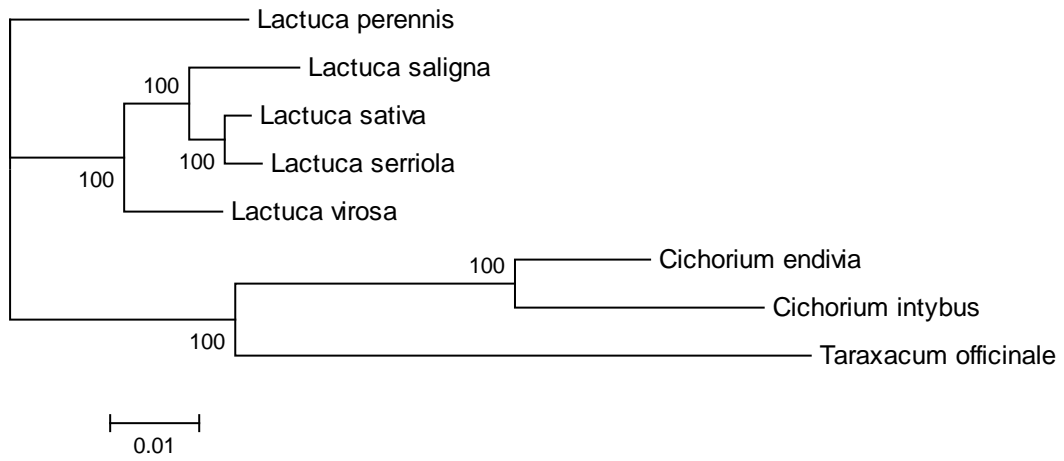


Figure S6. The phylogeny of mainland Cichorieae species used for comparisons with island *Schiedea*.

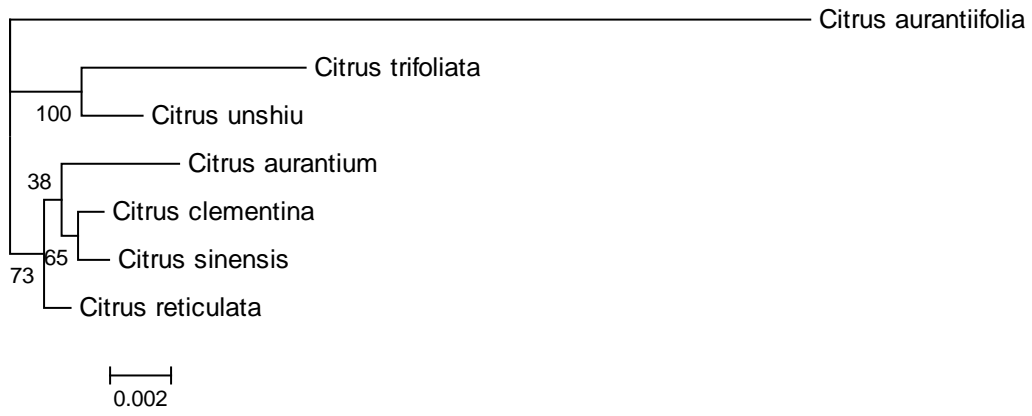


Figure S7. The phylogeny of mainland *Citrus* species used for comparisons with island *Schiedea*.

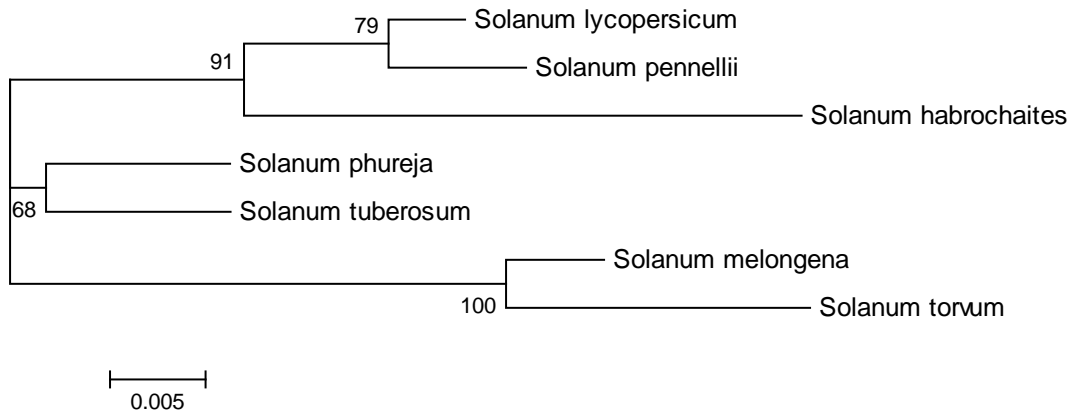


Figure S8. The phylogeny of mainland *Solanum* species used for comparisons with island *Schiedea*.