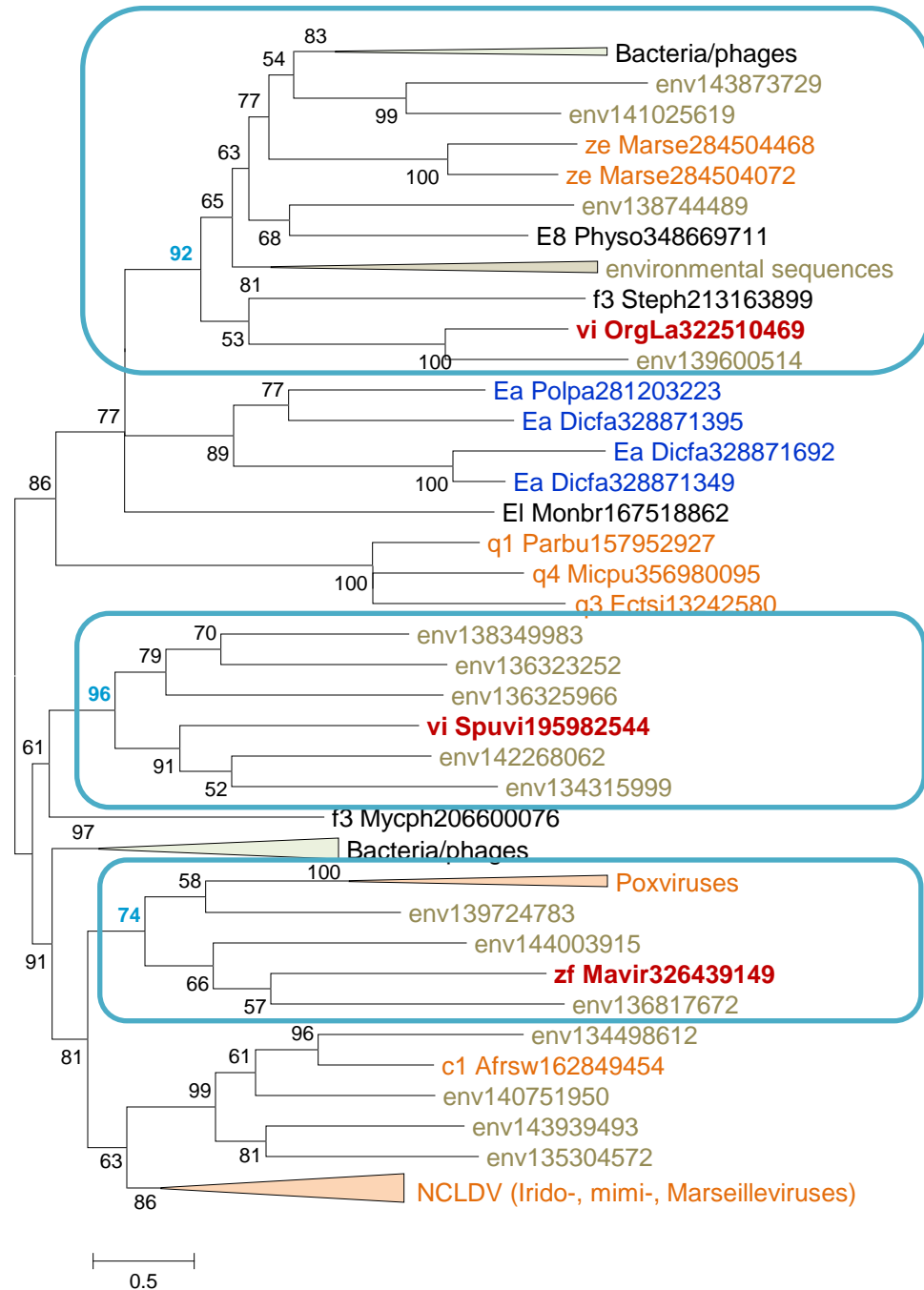


Primase-helicase (S3H) topology testing

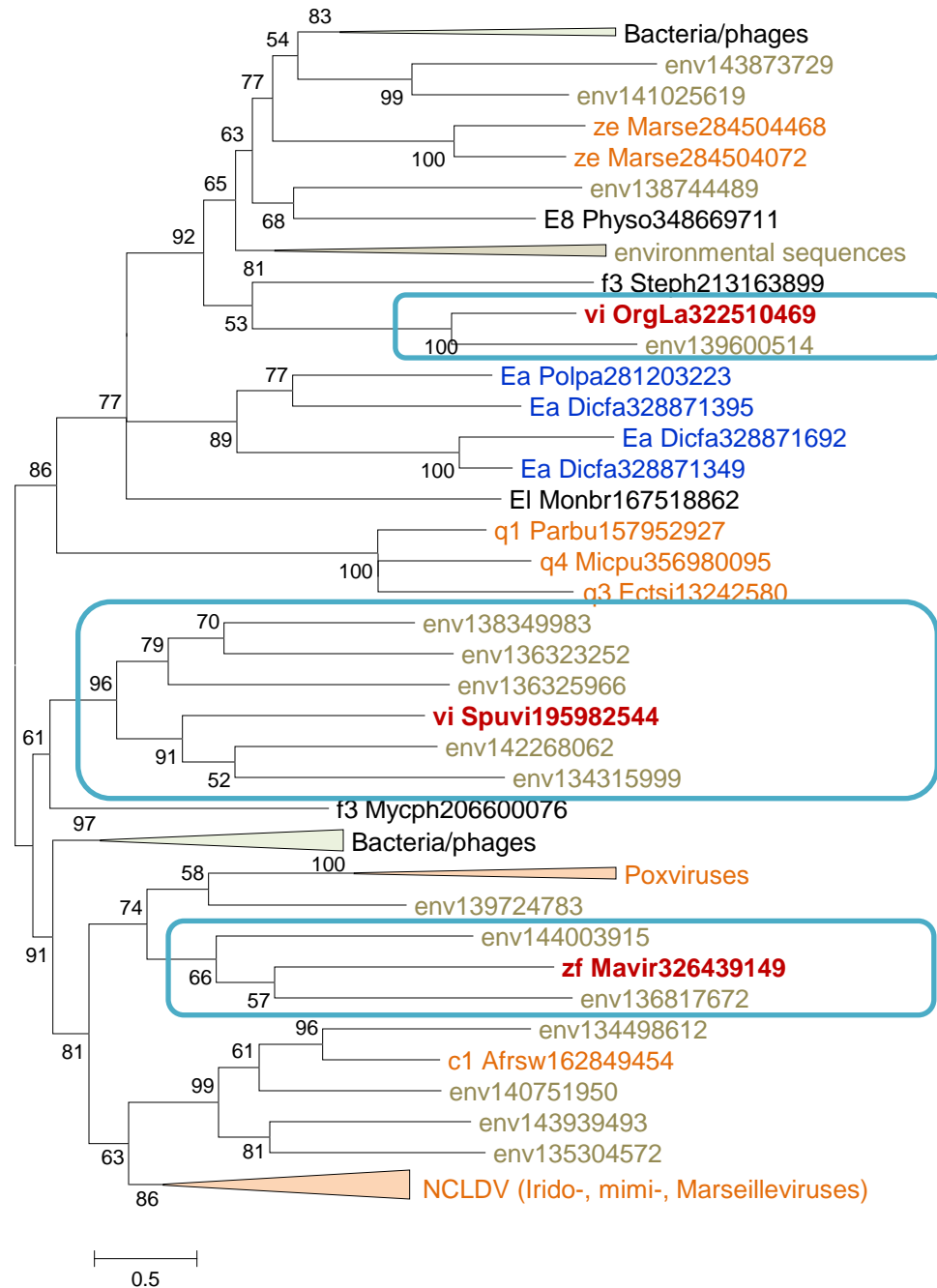
| tree | elw | au | Likelihood | tree | constraint description | elw | au | Likelihood |
|----------|-------|-------|------------|--------------|---|-------|-------|------------|
| freetree | 1.000 | 0.870 | -66820.76 | constraint 0 | all three virophages with related sequences are monophyletic | 0.000 | 0.000 | -66909.7 |
| freetree | 1.000 | 0.852 | -66820.76 | constraint 1 | all three virophages with related sequences are monophyletic | 0.000 | 0.000 | -66904.75 |
| freetree | 0.991 | 0.994 | -66820.76 | constraint 2 | OLV and Sputnik with their related env sequences are monophyletic | 0.009 | 0.006 | -66885.34 |
| freetree | 0.995 | 0.995 | -66820.76 | constraint 3 | OLV and Mavirus with their related env sequences are monophyletic | 0.005 | 0.000 | -66891.99 |
| freetree | 0.760 | 0.756 | -66820.76 | constraint 4 | Sputnik and Mavirus with their related env sequences are monophyletic | 0.240 | 0.244 | -66832.73 |

Only the monophyly of Mavirus and Sputnik was not rejected (AU > 0.05)

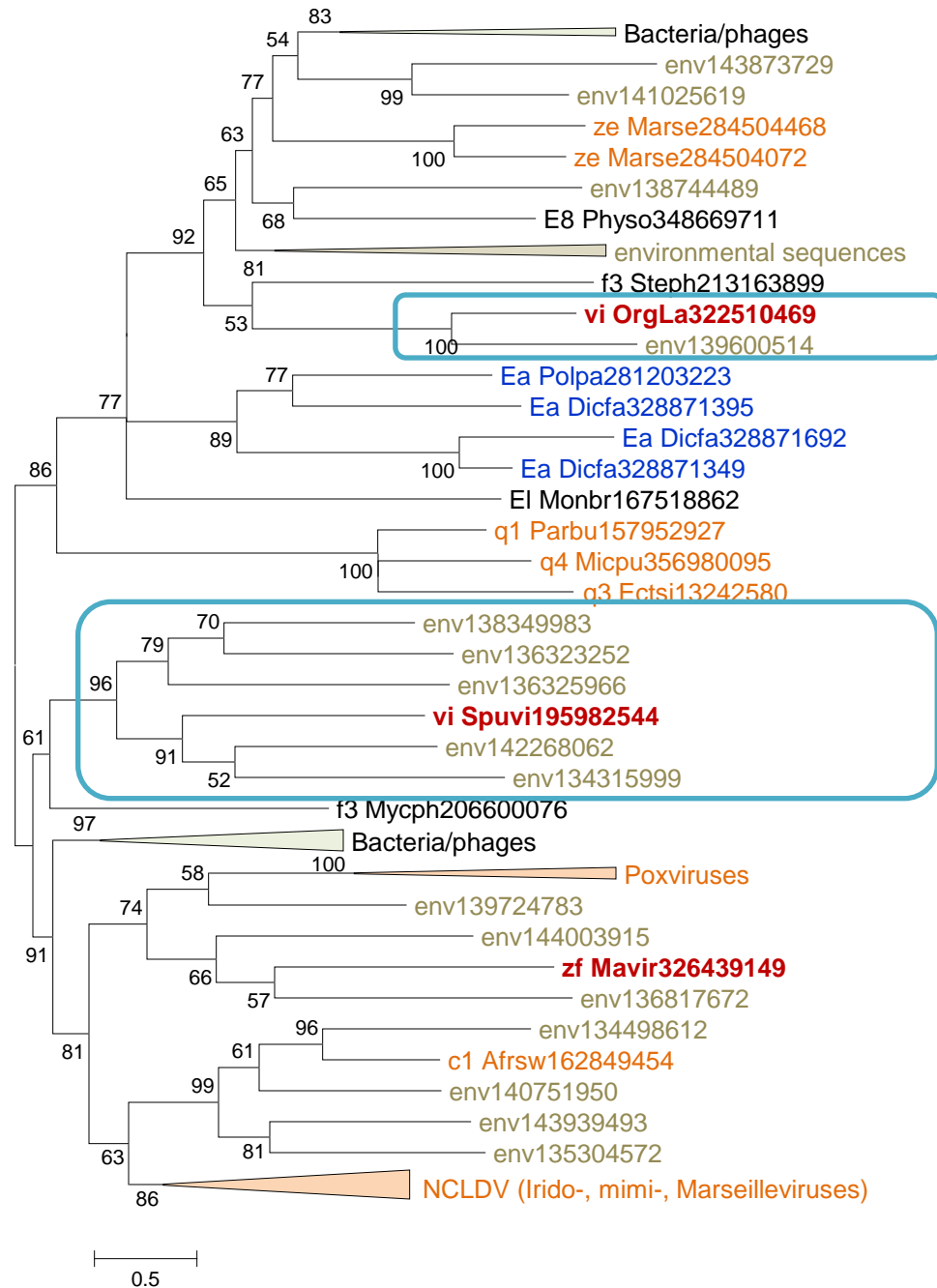
Constraint 0



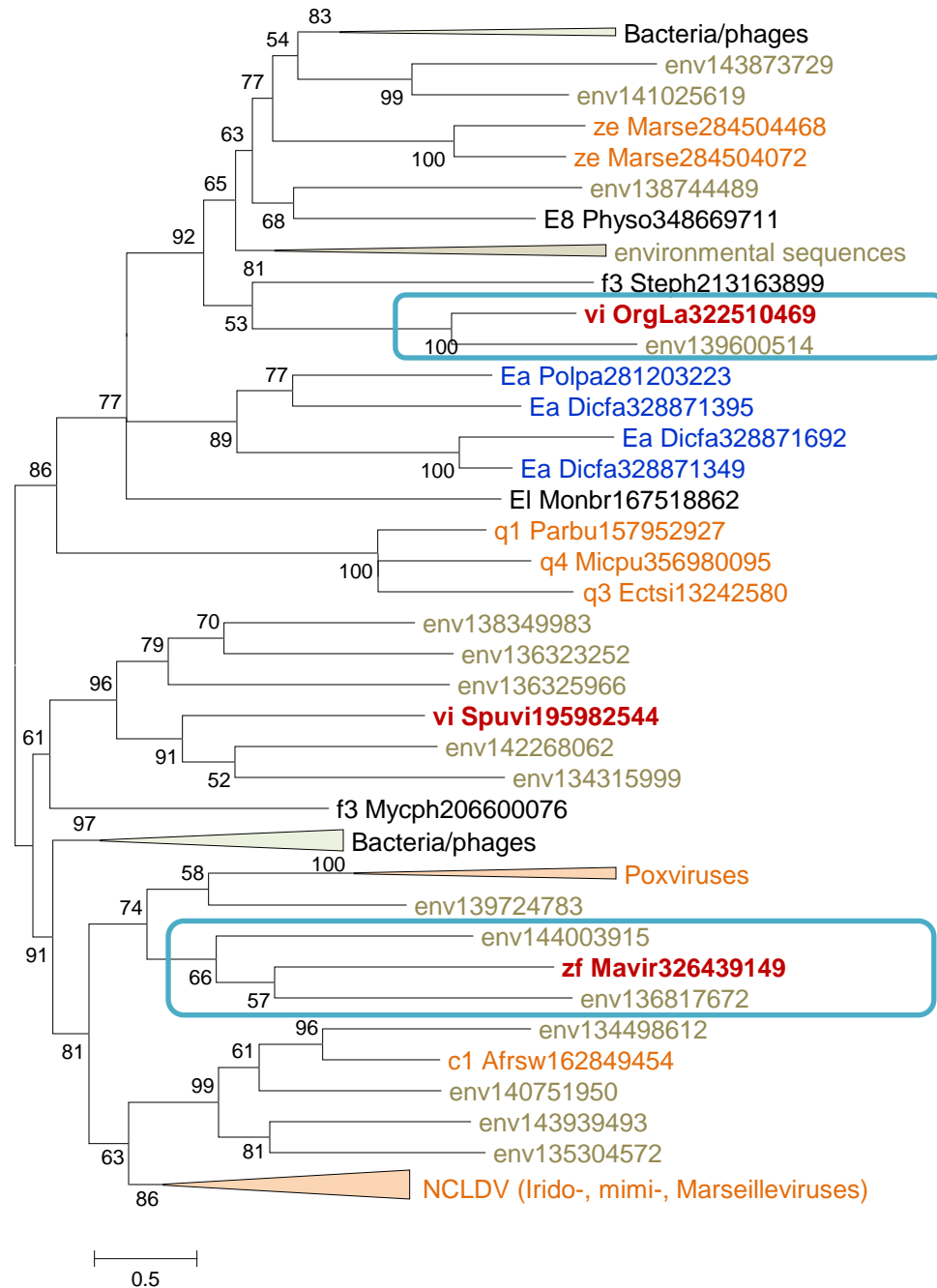
Constraint 1



Constraint 2



Constraint 3



Constraint 4

