

Supplemental Figure 1.

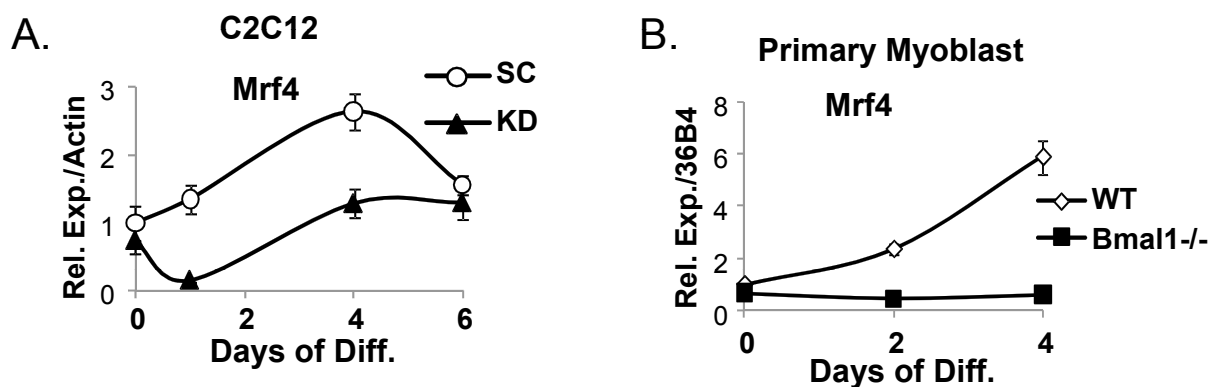


Fig.S1. RT-qPCR analysis of mRNA expression level of Mrf4 in C2C12 (A) and primary myoblasts (B) during myogenic differentiation. Values are expressed as fold change over control after normalization.

Supplemental Figure 2.

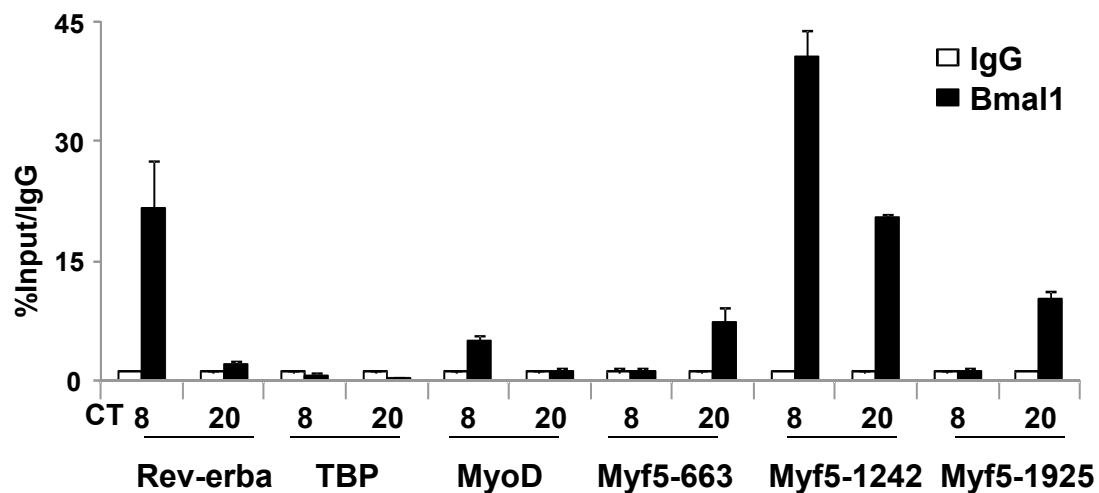


Fig.S2. ChIP-qPCR analysis of Bmal1 association with non-cononical E-box in MyoD core enhancer (as identified by Zhang et al. 2012), and three E-boxes (-663 CACGTG, -1242 CACGTG and -1925 CACATG, respectively) in Myf5 promoter. Values are expressed as fold enrichment of % input normalized to IgG control.

Table S1.

<b>Genes</b>		<b>Sequences</b>
Actin	Forward	CCACACCCGCCACCAGTTCG
	Reverse	TACAGCCCGGGGAGCATCGT
36B4	Forward	CGCTTTCTGGAGGGTGTCCGC
	Reverse	TGCCAGGACGCGCTTGTACC
Wnt10a	Forward	CAACGCGTGCGCTCTGGGTA
	Reverse	TGGCTCAAGCCCTTTCCGCG
Dvl2	Forward	TCAGTTTGCGGGTGTGCGCAG
	Reverse	TTCGTCTCGCCTACACCACCG
Fzd5	Forward	AATCATGCAGGGGGCCCCGAA
	Reverse	CGACAAGCTAGGTACCTGTGGCG
TCF3	Forward	AGGGCCTGCCAGGGACATCA
	Reverse	GGATGGCCTCGTCCAAGCGG
$\beta$ -catenin	Forward	CGCTTGGCTGAACCATCAC
	Reverse	GTTCCGCGTCATCCTGATAGT
MyoD	Forward	TGGCATCCGGTGCAGTGCAG
	Reverse	CCCTCCAGAAGGGTAGCACGCT
Myf5	Forward	AGCTGCTGAGGGAACAGGTGGA
	Reverse	ATTCAGGCATGCCGTCAGAGCA
Axin2	Forward	TGACTCTCCTTCCAGATCCCA
	Reverse	TGCCCACTAGGCTGACA
Bmal1	Forward	ACTCACCGTGCTAAGGATGGCTGT
	Reverse	CTCGGAGACAAAGAGGATCTTCCCTCG
Myogenin	Forward	GTCCCAACCCAGGAGATCATT
	Reverse	AGTTGGGCATGGTTTCGTCT
MHC3	Forward	AAGGCCATCACTGACGCCGC
	Reverse	CGCCAGCTGCTCAGCCTCAT
MLC1	Forward	GCAACAGGAGGACTTCAAGGAGGC
	Reverse	ATTGGTGCCCAGAGCCCGGA
Mrf4	Forward	CCACAGATCGTCGGAAAGCA
	Reverse	CAGTCTCTGGTTGGGGTTGG

Table S1. Primer sequences used for qPCR analysis.

Table S2.

<b>Genes</b>		<b>Sequences</b>
TBP	Forward	ACACTGCTGTTGGTGATTGTTGGTTT
	Reverse	TGGGAAGGCGGAATGTATCTGGCA
NR1D1	Forward	TTCCCTGGGACAGAGGGCTCT
	Reverse	TACAAATCCCAACAATCCTGGCGGT
MyoD1	Forward	TGCTTCTTTCGGCCAAGTAT
	Reverse	CGGGTTTTAAGCTGAGCACT
Myf5-P-663	Forward	TCTGAGGTCTGGCTCTGTCA
	Reverse	GGAATCTCCCAGTGCAGGTA
Myf5-P-1242	Forward	CTCCACTGTTGATCCGCTTT
	Reverse	CCCAAGTGTGAACAGTCCATT
Myf5-P-1925	Forward	CACGCGTACTCCTGAAGACA
	Reverse	CAAAGAGAGAAGGAGCAAGAGG

Table S2. Primer sequences used for ChIP-qPCR analysis.