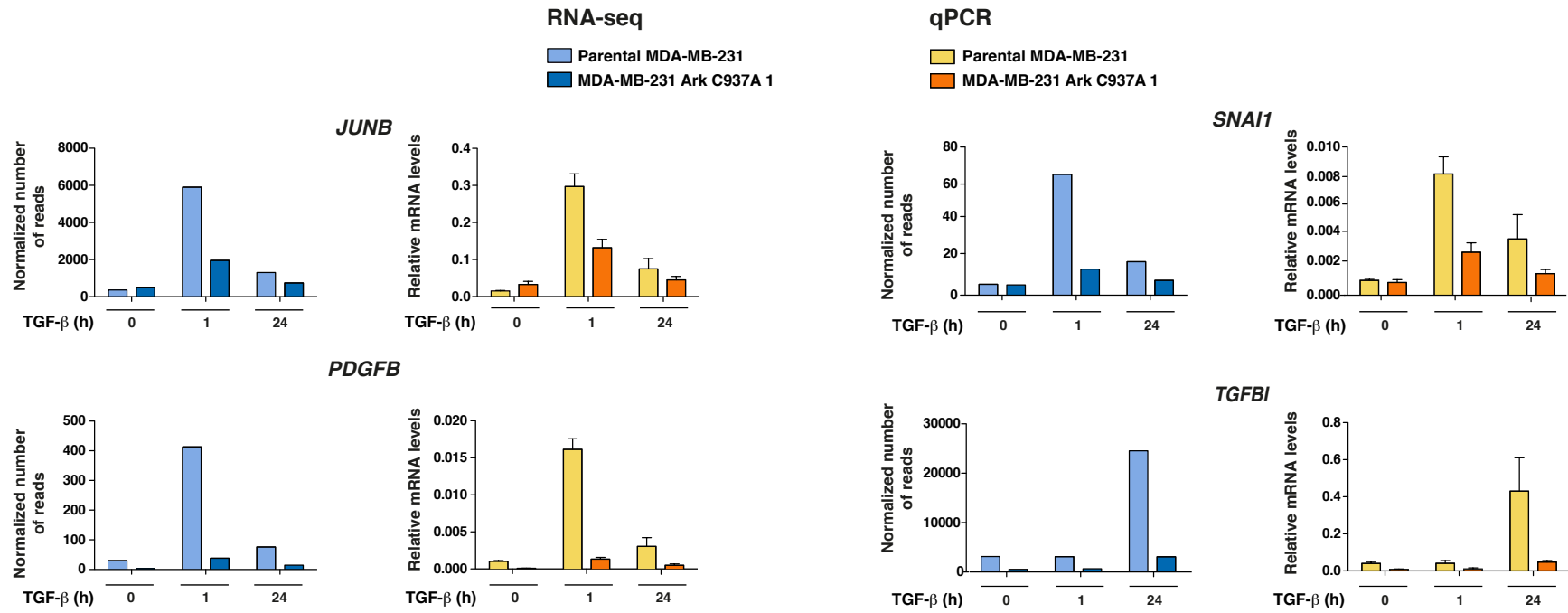
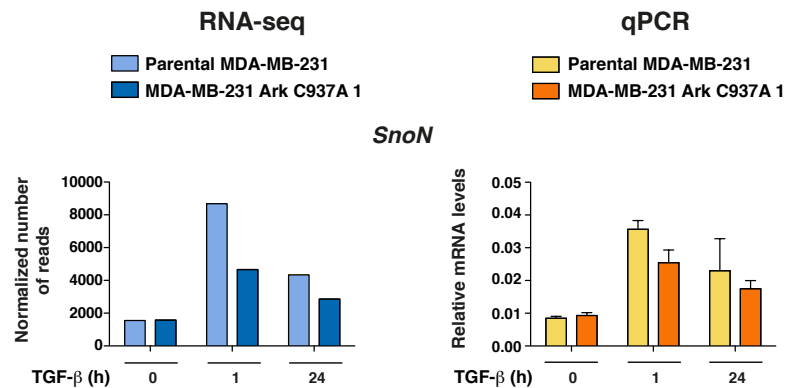


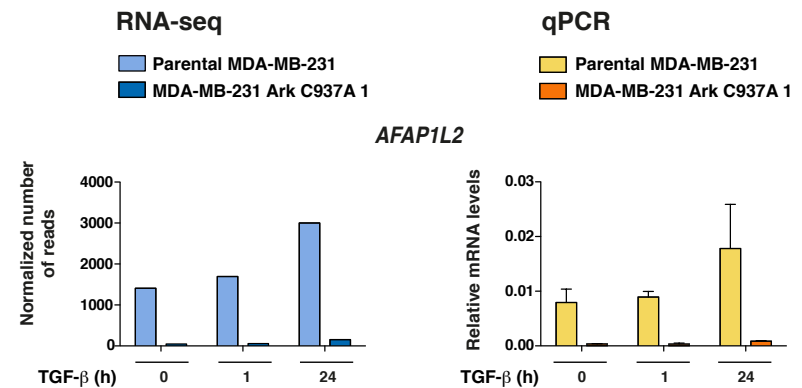
## TGF- $\beta$ -induced genes



## Unaffected genes



## Genes with basal levels affected



**Supplementary Figure 6. Validation of RNA-seq data by qPCR.** RNA was extracted from parental cells and MDA-MB-231 cells stably expressing Arkadia C937A as in Fig. S5. For validation of the RNA-seq data, RNA-seq results for a selected group of genes were directly compared with qPCR assays using specific primers and normalized to levels of *GAPDH*. Representatives of different classes of genes are shown: TGF- $\beta$ -responsive genes that are affected by dominant negative Arkadia; TGF- $\beta$ -responsive genes that are unaffected by dominant negative Arkadia and genes whose basal level is strongly affected by dominant negative Arkadia.