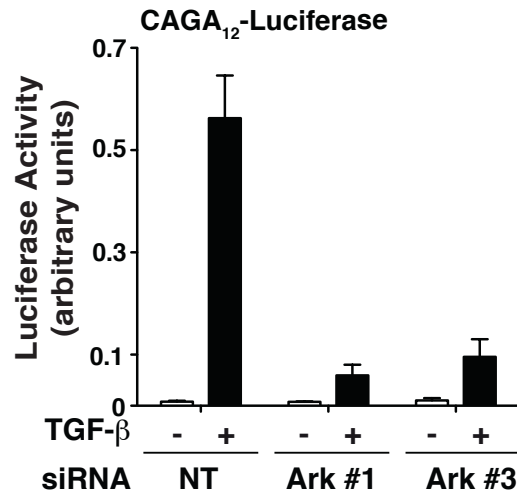
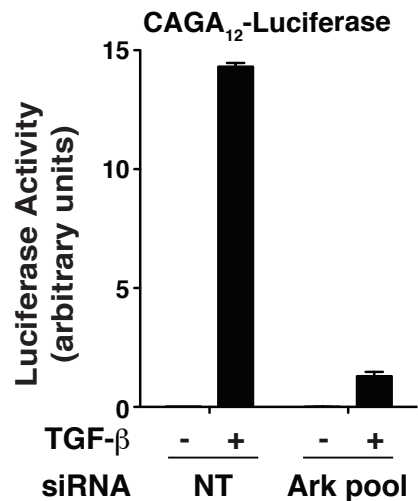


**A MTLN3E cells (rat mammary carcinoma)**



**B B16 cells (melanoma)**



**Supplementary Figure 7. Knockdown of Arkadia in MTLN3E and B16 cells inhibits TGF- $\beta$ -induced Smad3-dependent transcription.** MTLN3E cells (**A**) or B16 cells (**B**) were transfected with siRNAs against Arkadia as indicated and then were transfected 48 h later with the CAGA<sub>12</sub>-Luciferase reporter and the TK-Renilla control. Luciferase activity was normalized to Renilla activity. Means and standard deviations are shown of representative experiments performed in triplicate.