



Supplemental Material to:

Martin Weinberger, Belém Sampaio-Marques, Paula Ludovico and William C. Burhans

DNA replication stress-induced loss of reproductive capacity in *S. cerevisiae* and its inhibition by caloric restriction

2013; 12(8)

<http://dx.doi.org/10.4161/cc.24232>

<http://www.landesbioscience.com/journals/cc/article/24232>

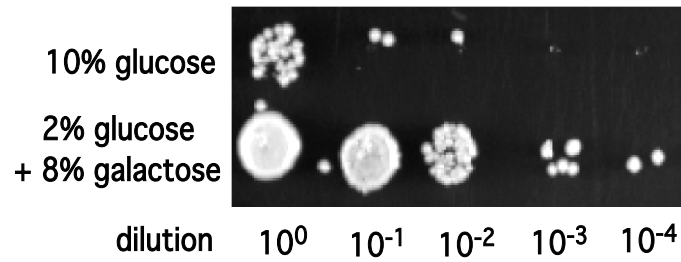


Fig. S1. Excess galactose does not reduce the reproductive capacity of *gal1* Δ cells in stationary phase. *gal1* Δ cells were cultured in SC medium prepared with 10% glucose or 2% glucose + 8% galactose and serial 10-fold dilutions were spotted on nutrient agar plates three days later.