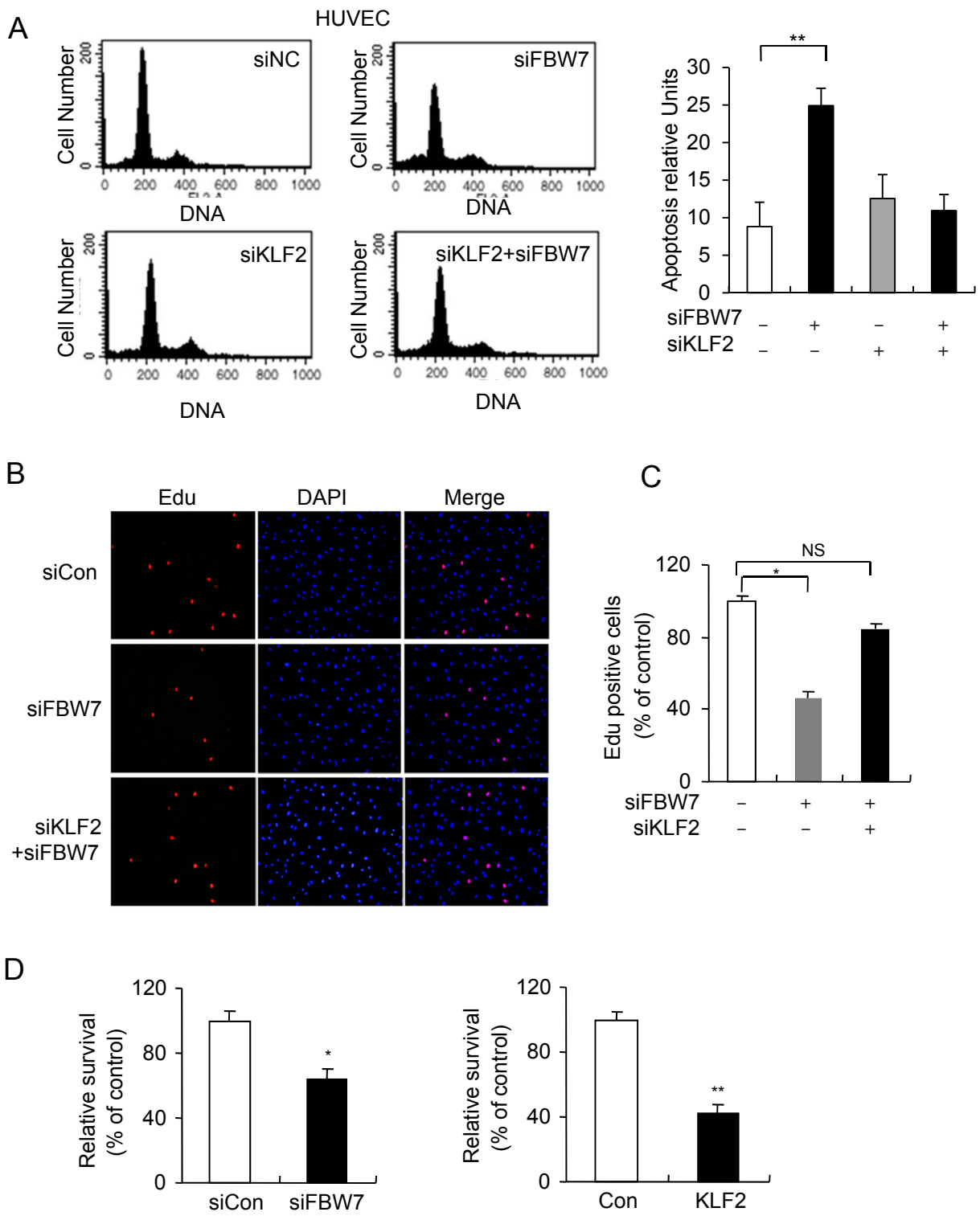


Figure. S10



**Fig. S10. FBW7 knockdown affected the cell proliferation and survival.** (A). FBW7 knockdown affected the cell death in HUVECs. HUVECs were transfected with siRNA as indicated. The cells were stained with PI and analyzed by FACS. Quantification were from four independent experiments. Data are the mean  $\pm$  SEM, \*\*,  $P < 0.01$ . (B). KLF2 knockdown rescued the inhibitory effect of FBW7 on the proliferation of HUVECs measured by Edu assay. (C). Quantification of cell proliferation from experiments performed as in B. \*,  $P < 0.05$ ; NS indicates no significance between two groups. (D). Overexpression of KLF2 had a similar effect on the proliferation of HUVECs as FBW7 knockdown. Cell survival was measured using a MTT assay. \*,  $P < 0.05$ ; \*\*,  $P < 0.01$ .