

Figure. S2

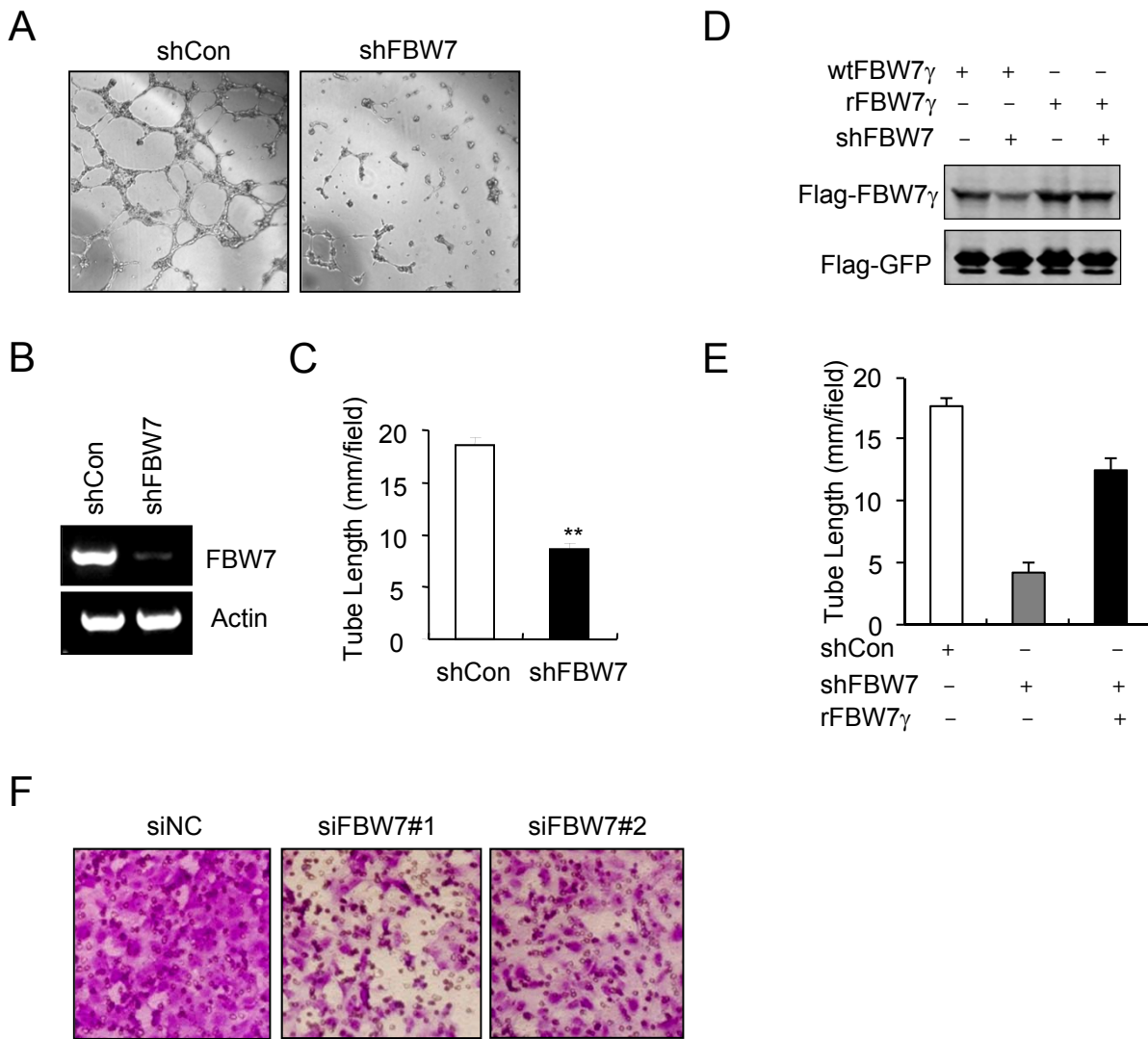


Fig. S2. FBW7 shRNA inhibited the endothelial tube formation. (A). Inhibition of FBW7 reduced the endothelial tube formation. HUVECs (1×10^4 cells/well in a 96 well plate) infected with lentivirus were seeded on growth factor-reduced Matrigel. After 8-10 hours, cells were fixed, and tubular structures were photographed (magnification, X100). (B). The RT-PCR indicated the successful knockdown of FBW7 by shRNA. Empty vector served as control; actin indicates equal loading. (C). Experiments were performed as in A, and the cumulative tube length was measured. Data are the mean and standard error from three experiments with each performed in triplicate. (D). Wild-type or shRNA-resistant mutant (rFBW7) FBW7 was transfected into 293T cells. Western blotting indicates rFBW7 γ was resistant to the shRNA of FBW7. (E). The inhibitory effect of FBW7 on endothelial tube formation could be rescued by shRNA-resistant mutant of FBW7. (F). Knockdown of FBW7 inhibited HUVEC migration measured using a transwell assay.